


# UP DATE

**DESIGN WEEK 2019**

**TUMIDEI  
/UP DATE**

- 5** ALCOVA LIGHT/ON-OFF COLLECTION COMP 12
- 11** ANTE TELAIO VETRO CON TESSUTO/WARDROBE  
ON-OFF COLLECTION COMP 08
- 17** FLUFFY UP/ON-OFF COLLECTION COMP 10
- 21** ALCOVA SYSTEM/ON-OFF COLLECTION COMP 06
- 27** LINE UP/ON-OFF COLLECTION COMP 01
- 29** BLOCK/TAILOR SOFA/ON-OFF COLLECTION COMP 09
- 39** TAYLOR SOFA/ON-OFF COLLECTION COMP 07
- 41** PORTA TV/WARDROBE COLLECTION COMP 03
- 45** STAND/WARDROBE COLLECTION
- 49** ANTE VETRO/WARDROBE COLLECTION COMP 02
- 52** CABINA MATI /WARDROBE COLLECTION COMP 04
  
- 59** INNER EQUIPMENT/ATTREZZATURE INTERNE
  
- 62** MANIGLIE HANDLE
- 64** FINITURE FINSHES
- 70** VETRO GLASS
- 73** TESSUTI FABRICS



**VETRO**, vero, non un gioco di parole ma una tecnologia ideata dal nostro laboratorio che dà vita ad un connubio tra la lucentezza del vetro e la purezza di molteplici materiali nobili. Questo permette una visione rivoluzionaria attraverso la lente di VETRO del mondo materico che caratterizza e rende uniche le Collezioni Tumidei.

**VETRO**, vero, not a play on words but a technology which Tumidei's Lab conceived to create a combination between the sheen of the glass and the pureness of several selected materials. This leads to a revolutionary vision of the matter world through VETRO's lens that characterizes all the Tumidei's Collections, making them unique.

**VETRO**<sup>®</sup>

ALCOVA  
LIGHT  
/ UP DATE

COMP 12





Divano **FLIP**  
2 posti (ART.DJF03)  
con movimento manuale  
piedi neri metallo  
tessuto Connery CON100.

Two-seater **FLIP** sofa  
(ART.DJF03) with manual  
opening, black metal feet  
Connery CON100 fabric.

## ALCOVA LIGHT / UP DATE

Design Simone Cagnazzo

Divano Flip tessuto SES003  
Ante nobilitato olmo bio N4  
Anta letto a ribalta con WDT242  
Cornice Alcova tortora 78 NA  
Maniglia Code VETRO WDT242

2 Seater Flip sofa fabric SES003  
Door in olmo bio N4 melamine  
Bed door with WDT242  
Alcova frame in tortora 78 NA  
Handle Code VETRO WDT242



COMP 12 / **A**

Divano Flip tessuto Connery CON100  
Ante laccato lavagna 50  
Ante letto a ribalta Marmo nero WDMAR002  
Cornice Alcova laccato nero 20  
Maniglia Code VETRO marmo nero WDMAR002

2 Seater Flip sofa fabric CON100  
Door in lavagna 50 lacquered  
Bed door with black marble WDMAR002  
Alcova frame in nero 20 lacquered  
Handle Code VETRO WDMAR002



COMP 12 / **B**

Divano Flip tessuto Mizar MIZ009  
Ante laccato grigio fumè 81  
Ante letto a ribalta WDT262  
Cornice Alcova laccato nero 20  
Maniglia Code VETRO WDT262

2 Seater Flip sofa fabric MIZ009  
Door in grigio fumè 81 lacquered  
Bed door with WDT262  
Alcova frame in nero 20 lacquered  
Handle Code VETRO WDT262



COMP 12 / **C**

## ALCOVA LIGHT / UP DATE

COMP 12

**ALCOVA LIGHT**  
letto matrimoniale  
(ART.LRB54) in rovere  
carbone (per materasso  
L .160 P.200 H.20 cm)  
anta ribalta letto con  
stampa digitale WDCON100  
in riferimento al  
tessuto Connery100  
del nostro campionario  
armadio laccato bianco  
maniglia **CODE** con VETRO  
retro stampato stampa  
digitale WDCON100.

**ALCOVA LIGHT**  
with double bed (ART.LRB54)  
(for W.160 D.200 H.20 cm  
mattress) bed structure  
in rovere carbone  
bed door with digital  
print WDCON 100  
matching with Connery100  
fabric from Tumidei's  
Collection wardrobe in  
lacquered bianco with  
**CODE** handle with  
backprinted VETRO and  
digital print WDCON100.



## ALCOVA SYSTEM / UP DATE

COMP 08

### ALCOVA SYSTEM

(ART LRB12RP) con seduta e nr. 4 ante battenti  
Finiture struttura nobilitato tundra N5, ante blu ombra 52 lucido e opaco  
colonne armadio con ante vetro telaio nero con nuova finitura tessuto Rock 02  
optional nuove luci led su tutto il fianco elemento laterale **STAND** (ART.STC22) con specchio e cassetiera in laccato blu ombra 52 lucido e opaco L. 985 H.1646 P.515

### ALCOVA SYSTEM

(ART. LRB42RP) with seat cushion and 4 hinged doors.  
Alcova frame in tundra N5 melamine Alcova doors in blu ombra 52 mat and glossy lacquered wardrobe with black-framed glass doors with the new fabric finish Rock 02 new led lights along the sides as optional **STAND** new dresser (ART.STC22) with mirror and chest of drawers in blu ombra 52 mat and glossy lacquered W.98,5 H.164,6 D.51,5 cm



## ALCOVA SYSTEM / UP DATE

COMP 08  
Design Simone Cagnazzo



**VISTA INTERNO  
ALCOVA SYSTEM**  
ripiani porta scarpe  
e ganci appendiabiti.

**ALCOVA SYSTEM  
INTERNAL VIEW**  
shoe-rack shelves  
and hangers.



**AIR CLEANER**  
Dispositivo per il  
trattamento e purificazione  
dell'aria all'interno di  
vani chiusi. Composto da  
lampada led UVA e filtro,  
riduce gli agenti nocivi come  
batteri, muffe e sostanze  
allergiche.

**AIR CLEANER**  
Air treatment device  
inside closed rooms.  
Air purifying device  
inside closed sections.  
Composed by UVA LED  
lamp and filter, it reduces  
pests such as bacterias,  
mold and allergenic  
substances.







Struttura in nobilitato noce NQ  
 Ante vetro telaio nero con tessuto Oak 04  
 Ante a ribalta nobilitato noce NQ  
 Ante a battente nobilitato noce NQ  
 Cornice Alcova nero laccato 20

Structures in noce NQ melamine  
 Wardrobe with black-framed  
 glass doors with fabric Oak 04  
 Alcova doors in noce NQ melamine  
 Alcova frame in nero 20 lacquered



COMP 08 / A

Struttura in nobilitato olmo scuro NG  
 Ante vetro telaio nero con wd\_Riga nero  
 Ante a ribalta nero laccato opaco 20  
 Ante a battente laccato nero lucido 20  
 Cornice Alcova olmo scuro NG

Structures in olmo scuro NG melamine  
 Wardrobe with black-framed  
 glass doors and digital print wd\_Riga nera  
 Alcova doors in nero 20 glossy and matt lacquered  
 Alcova frame in olmo scuro NG melamine



COMP 08 / B

### FLUFFY UP

Completa la collezione dei divani Fluffy, creando un sistema di piani dotate di piedi rialzati, e componibili, per creare gruppi grandi e piccoli, sia come divano individuale o gruppi di posti a sedere.

Design by Simone Cagnazzo nuovi piani per Divano Fluffy con piedi metallo neri.

### FLUFFY UP

It completes the Fluffy sofas collection, creating platforms system with raised feet. It is possible to combine the elements in order to create small and large modular configurations, both as single sofa, or as multiple-sit sofas.

Design by Simone Cagnazzo new platforms for Fluffy sofa with black metal feet.



FLUFFY  
/ UP DATE



Si possono realizzare  
numerose formazioni  
con i nuovi piani **FLUFFY UP**  
nella composizione sono  
presentati in essenza  
rovere carbone E2 e  
nobilitato noce NQ.

It is possible to create  
many compositions with the  
new **FLUFFY UP** platforms,  
in the shown configuration,  
they are presented in  
rovere carbone wood E2  
and noce NQ melamine.



## FLUFFY / UP DATE

Design Simone Cagnazzo



ALCOVA  
SYSTEM  
**/ UP DATE**

COMP 06





Design Simone Cagnazzo

**ALCOVA  
SYSTEM  
/ UP DATE**

COMP 06

**ALCOVA SYSTEM**

(ART.LRC32) con letto a ribalta (per materasso L.140 P.200 H.20 cm) in nobilitato noce NQ e ante laccate opaco e vetro retrolaccato muschio 46.

**ALCOVA SYSTEM**

(ART.LRC32) with foldaway bed (for W.140 D.200 H.20 cm mattress) in noce NQ melamine doors in muschio 46 mat lacquered with back lacquered glass.

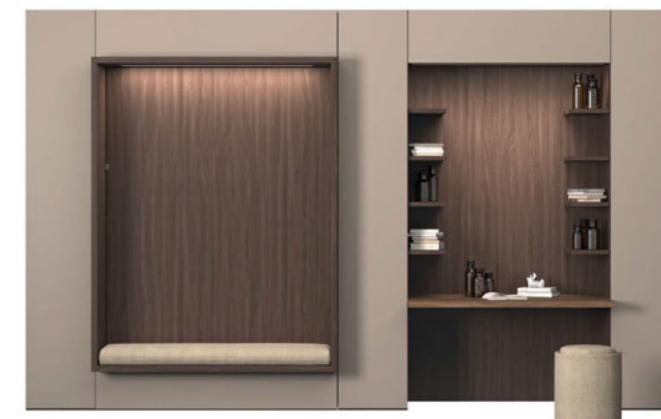
A fianco dell'Alcova System nuovo elemento **WINDOW /STUDIO** (ART.WN02) in finitura noce NQ nobilitato e ante in laccato opaco muschio 46. Con i nuovi elementi Window si potranno soddisfare molteplici esigenze di arredo. **PILL POUF** piccolo (ART.DJF11) in pelle Elegance 207.

Next to the Alcova System the new item **WINDOW/STUDIO** (ART. WN02) in noce NQ melamine with doors in muschio 46 matt lacquered. With these new Window items it can be easy to meet several furniture requests. **PILL POUF** small size (ART. DJF11) upholstered with Elegance 207 leather.



Ante armadio in nobilitato tortora NA  
Struttura armadio nobilitato olmo scuro NG  
Cornice e anta Alcova nobilitato olmo scuro NG  
Pannelli e mensole studio nobilitato olmo scuro NG  
Maniglia push-pull tessuto Sesia 09

Wardrobe door in tortora NA melamine  
Wardrobe structure in olmo scuro NG melamine  
Alcova frame and door in olmo scuro NG melamine  
Wall panels and shelves in olmo scuro NG melamine  
Push-pull opening Sesia 09 fabric



COMP 06/ A

Ante armadio nobilitato olmo bio N4  
Struttura armadio nobilitato Limo NL  
Interni trama tessuto NT Cornice  
e anta Alcova nobilitato Limo NL  
Pannelli e mensole studio nobilitato Limo NL  
Maniglia push-pull tessuto Sesia 05

Wardrobe doors in olmo bio N4 melamine  
Wardrobe structure in limo NL melamine  
Internal equipment in trama tessuto NT melamine  
Alcova frame and door in limo NL melamine  
Wall panels and shelves in limo NL melamine  
Push-pull opening Sesia 05 fabric



COMP 06/ B

Ante armadio laccato biscotto 09  
Struttura armadio nobilitato tundra N5  
Cornice e anta Alcova nobilitato tundra N5  
Pannelli e mensole studio nobilitato tundra N5  
Maniglia push-pull tessuto Connery 32

Wardrobe doors in biscotto 09 lacquered  
Wardrobe structure in tundra N5 melamine  
Alcova frame and door in tundra N5 melamine  
Wall panels and shelves in tundra N5 melamine  
Push-pull opening Connery 32 fabric



COMP 06/ C



**LINE UP** mensole  
con schienali in VETRO  
retrostampato con stampa  
digitale WD CON100  
CON032 / CON007  
e vetro specchiato  
grigio / bronzo.

**LINE UP** shelves  
with back panels  
in backprinted VETRO  
with digital prints  
WD\_CON100 / CON032  
CON007 and grey / bronze  
mirrored glass.

## LINE UP / UP DATE

COMP 01

Design Simone Cagnazzo

Poltrone **FLIP** con  
movimento manuale  
piedi neri metallo pelle  
martellata 747.

**FLIP** armchair with  
manual opening and  
black metal feet  
leather martellata 747.



## ON OFF / UP DATE

COMP 09

**BLOCK** (ART. LRB14W)  
contenitore con letto verticale  
matrimoniale (per materasso  
L.160 P.200 H.20 cm)  
apertura motorizzata  
combinata con divano **TAILOR**.  
Strutture in laccato opaco  
ghiaccio 42 con frontali in  
laccato lucido e schiena in  
laccato opaco argilla 47.  
Il nuovo divano **TAILOR**  
può essere realizzato in  
due tessuti diversi, nella  
composizione è presentato  
con struttura in pelle  
elegance 204 e cuscini seduta  
e schienale in tessuto BLI005.

**BLOCK** (ART. LRB14W)  
with vertical double bed  
(for W.160 D.200 H.20 cm  
mattress) combined motor  
opening with **TAILOR** sofa.  
Structures in ghiaccio 42  
matt lacquered with front in  
glossy lacquered and back  
panels in argilla 47 matt  
lacquered. The new **TAILOR**  
sofa can be upholstered  
with two different fabrics,  
in the shown composition it  
is presentde with structure  
in elegance204 leather and  
seat and back cushion in  
BLI005 fabric.







Divano Tailor con struttura pelle Elegance 304  
Cuscini seduta/schiena Tessuto BLI001  
Ante e struttura nobilitato tortora NA  
Schiene laccato caffè 29

Tailor sofa with structure in Elegance 304 leather  
Seat/back cushions in BLI001 fabric  
Door and structure in tortora melamine NA  
Back in caffè 29 lacquered



COMP 09 / A

Apertura **BLOCK** con sistema motorizzato combi abbinato al nuovo divano **TAILOR** 2 posti. Tramite un telecomando è possibile effettuare l'apertura e la chiusura degli stessi contemporaneamente. Schienale **BLOCK** con stampa digitale WDBLI005 abbinata al tessuto del divano **TAILOR**. A fianco del contenitore **BLOCK** nuova colonna (ART.B047) L.27 cm (escluso fianchi) H.261 P.59 cm.

**BLOCK** opening with combi motor system working together with the new **TAILOR** two-seater sofa. By using the remote control, it is possible to simultaneously combine the opening/closing process of both the items. **BLOCK** back panels with digital WDBLI005 matching with the **TAILOR** sofa fabric. Next to the **BLOCK**, the new nightstand-column (ART.B047) W.27 cm (sides excluded) H.261 D.59 cm.

Divano Tailor in tessuto BLI021  
Ante e struttura laccato grafite 51  
Schiene in laccato avio 24

Tailor sofa in BLI021 fabric  
Door and structure in grafite 51 lacquered  
Back in avio 24 lacquered



COMP 09 / B

Colonna con accessori opzionali, presa di corrente usb e lampada orientabile. Il vano con funzione di comodino è accessibile direttamente dal letto tramite apertura nel fianco sp.4 cm del contenitore **BLOCK**.

The column includes optional accessories, such as plug-in socket, usb jack and adjustable lamp. This night table compartment can be directly accessible from the bed, through a specific niche realized on the 4cm th. sides of the **BLOCK** cabinet.



## ON OFF / UP DATE

COMP 07

**BLOCK** (ART.LR90W) contenitore con letto verticale una piazza e mezzo (per materasso L.115 P.195 H.20 cm) in finitura laccato opaco tortora 78. A fianco del contenitore **BLOCK NUOVA COLONNA** (ART.B046) L.27 cm (escluso fianchi) H.229 P.59 cm e vano con accessori opzionali, presa di corrente, usb e lampada orientabile. Il vano con funzione di comodino è accessibile direttamente dal letto tramite apertura nel fianco sp.4 cm del contenitore BLOCK. Segue zona studio/toilette (ART.MQ77) con specchio e **VETRO** retrostampato con WDBLI016 e **PILL POUF** (ART.DJF11) in tessuto BLI016.

**BLOCK** cabinet (ART.LR90W) with vertical three-quarter bed (for W. 115 D.195 H.20 cm mattress) in tortora 78 matt lacquered. Next to the **BLOCK NEW COLUMN** (ART.B046) W.27cm (sides excluded) H.229 D.59 cm including a compartment with optional accessories such as plug-in socket, usb jack and adjustable lamp. This night table compartment can be directly accessible from the bed, through a specific niche realized on the 4cm th. sides of the BLOCK cabinet. Moving on, a studio/vanity area (ART.MQ77) with mirror and backprinted **VETRO** with WDBLI016. Small **PILL POUF** (ART.DJF11) in BLI016 fabric.

## ON OFF / UP DATE

COMP 07

**TAILOR** (ART.DJF42) modulo una piazza e mezzo con movimento manuale e pouf fisso (ART.DJF51) in tessuto BLI016 e bracciolo (ART.DJF58) in legno laccato opaco caramello 83. A destra nuovo elemento **STAND** (ART.STF13) in laccato opaco caramello 83 con vano aperto bordo a 45°, ripiani in legno aggiunti e specchio. (L.71cm P.39,8 H.164,6 cm)

**TAILOR** 1 and 1/2 seater sofa (ART.DJF42) with manual recliner and fixed pouf (ART.DJF51) in BLI016 fabric, new armrest (ART.DJF58) in caramello 83 matt lacquered. On the right side, the new **STAND** dresser (ART.STF13) in caramello 83 matt lacquered with a 45° edges open box with additional wooden shelves and mirror above. (W.71 D.39,8 H.164,6 cm)





## TAYLOR SOFA / UP DATE

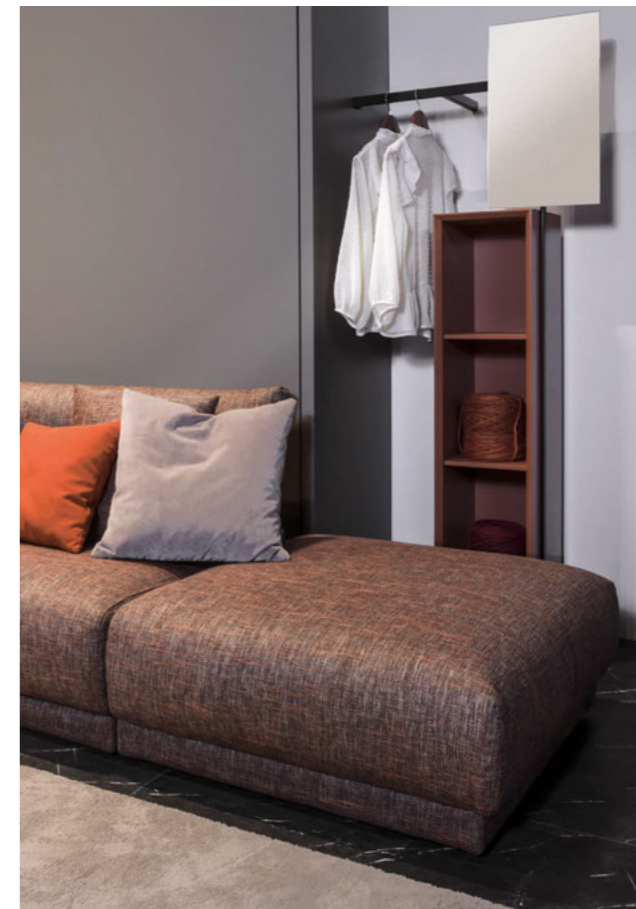
Design Simone Cagnazzo

### TAYLOR SOFA

Divano della collezione ON OFF è caratterizzato da un'estetica asciutta e contemporanea. Presenta una struttura leggera e cuscini dalle generose imbottiture, contraddistinte da un profilo sartoriale che ne sottolinea le forme morbide.

### TAYLOR SOFA

From ON OFF collection, is marked by a rigorous and contemporary aesthetic design, with a light structure and filled lining cushions, identified by a tailored profile which highlights soft and comfortable shapes.



## WARDROBE COLLECTION /

COMP 03

Armadio con struttura in nobilitato tundra ante in laccato opaco biscotto 09 con nuova maniglia con gola **TRACK** laccata biscotto 09. Anta porta tv apribile (ART.PT71) all'interno del vano nr.2 ripiani **STAND** (ART.STF31) laccato opaco nero con vano aperto e bordo a 45° e specchio (L.110 cm P.53,3 H.164,6 cm) inserito su pedana nuove luci led ad incasso.

Wardrobe with structure in tundra melamine, doors in biscotto 09 matt lacquered with new **TRACK** handle in biscotto 09 lacquered. TV **STAND** opening panel (ART.PT71), with 2 internal shelves. **STAND** dresser (ART. STF31), in nero matt lacquered with a 45° edges open box and mirror above (W.110 D.53,3 H.164,6 cm) on platform and new recessed led lights.



Anta porta TV apribile  
(ART.PT71)

Tv stand opening panel  
(ART.PT71)



## STAND / NEW COLLECTION

Design Simone Cagnazzo

**STAND** è un sistema che si applica a muro oppure su fianco armadi, Block, Alcove cabine e librerie. Un pratico servo muro su cui appendere vestiti e accessori, dotato di telai appendiabiti, specchi, vani a giorno e contenitori con cassetti componibili. Ogni composizione può essere personalizzata con l'ampia scelta di finiture della Collezione Tumidei.

**STAND** is a system which can be fixed onto wall or Blocks, Alcoves wardrobes, closets and bookshelves. A practical coat hanger for clothes and accessories, equipped with hanging rails, mirrors, open boxes and cabinets with modular drawers. Every configuration can be customized by using all the finishes of the Tumidei's Collection.







Struttura in nobilitato noce NQ  
 Ante in nobilitato limo 76  
 Maniglia con gola Track laccata limo 76

Structure in noce NQ melamine  
 Doors in limo 76 melamine  
 Track handle in limo 76 lacquered

COMP 03 / **A**



Struttura in nobilitato olmo scuro NG  
 Ante in laccato argilla 47  
 Maniglia con gola Track laccato nero 20

Structure in olmo scuro NG melamine  
 Door in argilla 47 lacquered  
 Track handle in nero 20 lacquered

COMP 03 / **B**



Struttura armadio  
nobilitato trama tessuto NT  
con ante **VETRO** retrostampato  
con WDBLI023 maniglia  
**LINE** laccata biscotto 09

Wardrobe structure in  
trama tessuto NT melamine  
Doors in backprinted **VETRO**  
with WDBLI023 **LINE** handle  
in biscotto 09 lacquered.

Struttura in nobilitato bianco NB  
Ante nobilitato bianco NB  
Ante **VETRO** retro stampato  
WDMAR001 stampa digitale  
Maniglia Line laccata bianco 39

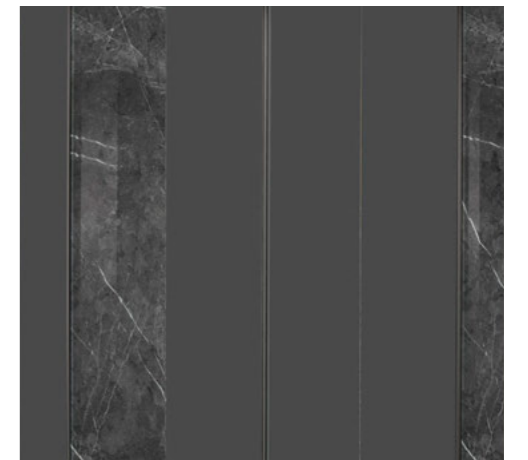
Structure in bianco NB melamine  
Doors in bianco NB melamine  
Doors with backprinted **VETRO**  
with WDMAR001 digital print  
Line handle in bianco 39 lacquered



COMP 02 / A

Struttura in nobilitato tundra N5  
Ante laccate lavagna 50  
Ante **VETRO** retrostampato  
WDMAR002 stampa digitale  
Maniglia Line laccata lavagna 50

Structure in tundra N5 melamine  
Doors in lavagna 50 lacquered  
Doors with backprinted **VETRO**  
with WDMAR002 digital print  
Line handle in lavagna 50 lacquered



COMP 02 / B

Struttura in nobilitato ghiaccio NH  
Ante laccato ghiaccio 42  
Ante **VETRO** retrostampato  
WDCEM001 stampa digitale  
Maniglia Line laccata ghiaccio 42

Structure in ghiaccio NH melamine  
Doors in ghiaccio 42 lacquered  
Doors with backprinted **VETRO**  
with WDCEM001 digital print  
Line handle in ghiaccio 42 lacquered



COMP 02 / C

# WARDROBE / NEW COLLECTION

COMP 02

Armadio con ante  
VETRO retrostampato  
stampa digitale WDBLI023  
e nuova maniglia LINE  
biscotto 09. Struttura e ante  
in nobilitato trama tessuto  
NT nuove luci led  
ad incasso.

Wardrobe with  
backprinted VETRO door  
with WDBLI023 digital print  
and new LINE handle in  
biscotto 09 lacquered.  
Structure in trama tessuto  
NT melamine and new  
embedded led lights.



**CABINA MATI  
WARDROBE  
COLLECTION /**

COMP 04

Cabina **MATI** con pannelli boiserie in nobilitato noce NQ specchio e **VETRO** con stampa digitale WDCON007. Nuove attrezzature come le mensole con telaio bronzo vetro fumè e luce led opzionale, frontale cassetto in VETRO con WDCON007.

MATI walk-in-closet with wall panels in noce NQ melamine, mirror and VETRO with WDCON007 digital print. New equipment such as shelves with bronzed frame, smoked glass and optional led lights, front drawer in VETRO with WDCON007.

CABINA MATI  
/ WARDROBE  
COLLECTION

COMP 04



**CABINA MATI  
WARDROBE  
COLLECTION /**

COMP 04

I pannelli boiserie e i frontali dei cassetti possono essere realizzati anche con **VETRO**, la nostra nuova tecnologia che ci permette di stampare su vetro tessuti marmi e cementi dando alla cabina **MATI** un tocco di grande personalità.

Wall panels and front drawers can also be in **VETRO** finish: our new technology wich allows fabric, marble and concrete textures to be printed on glass bringing personality to the **MATI** walk-in-closet.



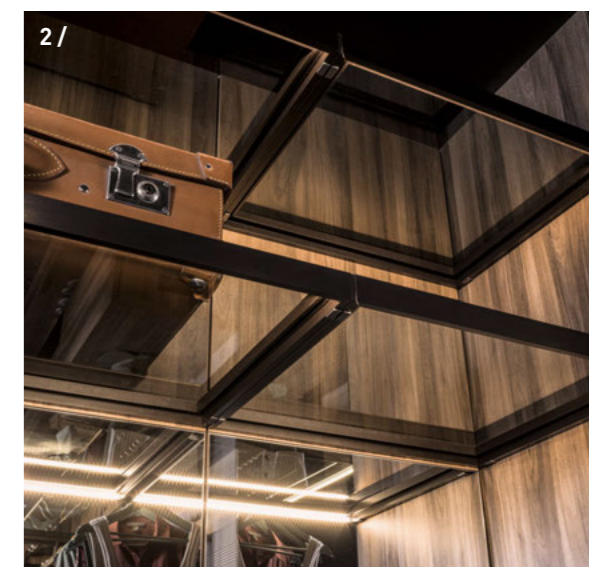


1 /

INNER  
EQUIPMENT  
/ UPDATE

- 1 / Scarpiera
- 2 / Mensole
- 3 / Appenderia
- 4 / Cassetti

- 1 / Shoe-rack shelves
- 2 / Glass shelves
- 3 / Hangers
- 4 / Drawers



2 /



4 /



3 /



1/



2/

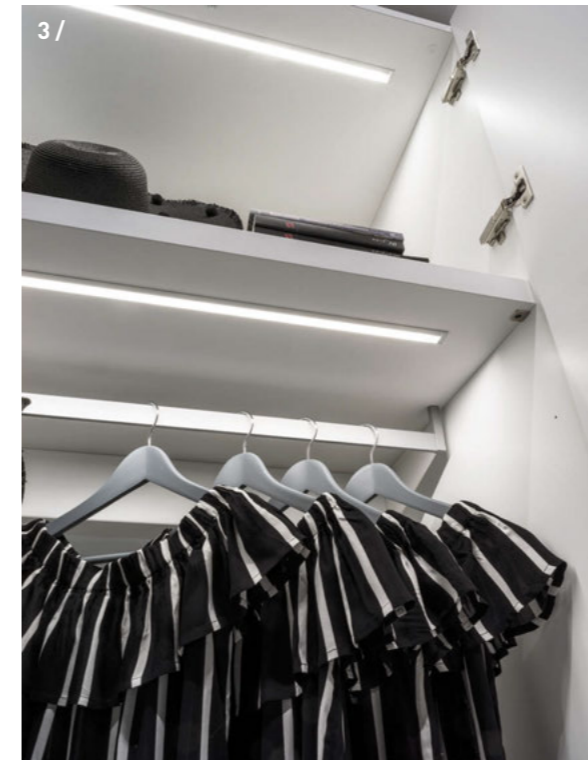
## INNER EQUIPMENT / UPDATE

- 1 / Divisori interni cassetti
- 2 / Atterazzature interne
- 3 / Appenderia

- 1 / Internal partitions for drawers
- 2 / Internal equipments
- 3 / Hangers



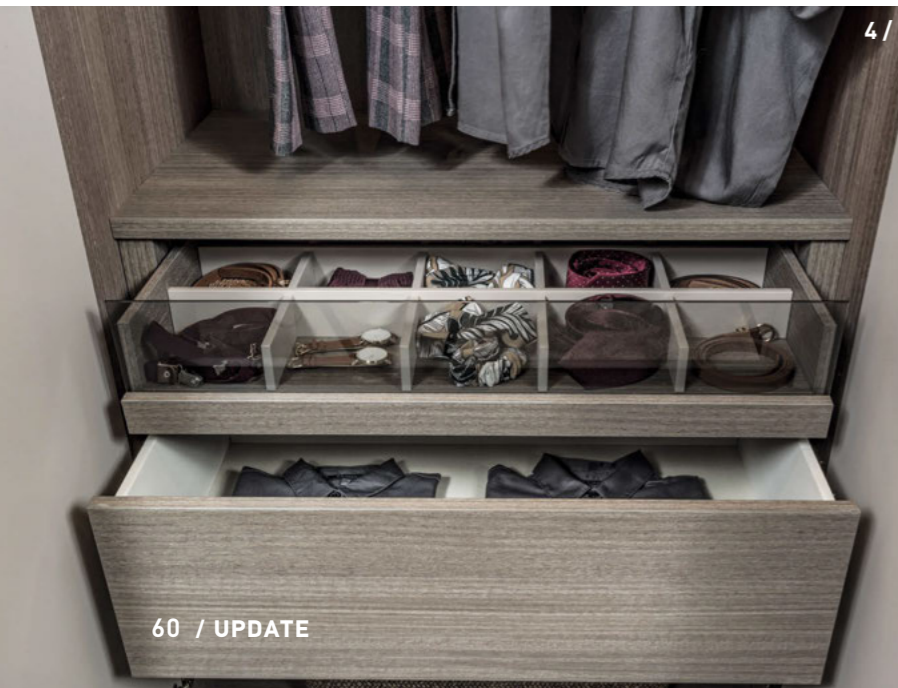
3/



3/



2/



4/

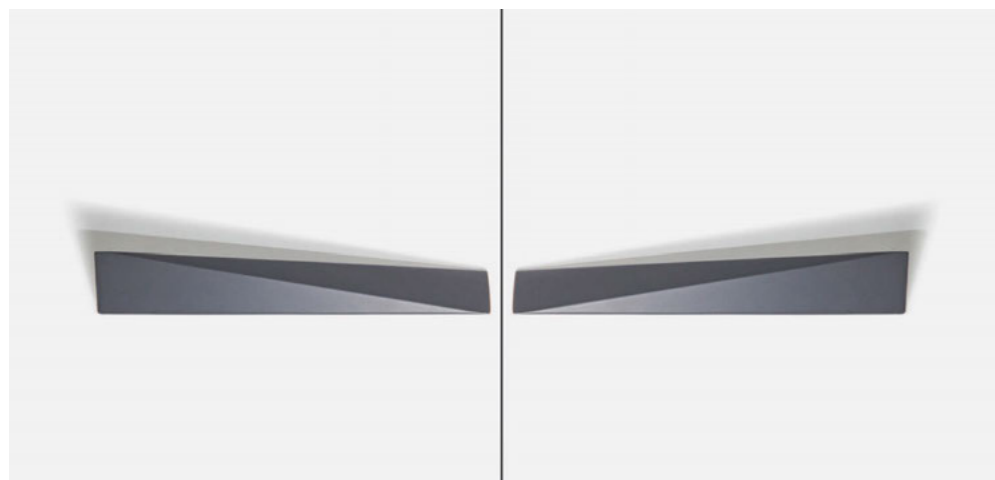
- 1 / Appenderia
- 2 / Porta pantaloni
- 3 / Scarpiera
- 4 / Divisori interni cassetti

- 1/ Hangers
- 2 / Trousers rack
- 3 / Shoe-rack shelves
- 4 / Internal partitions for drawers





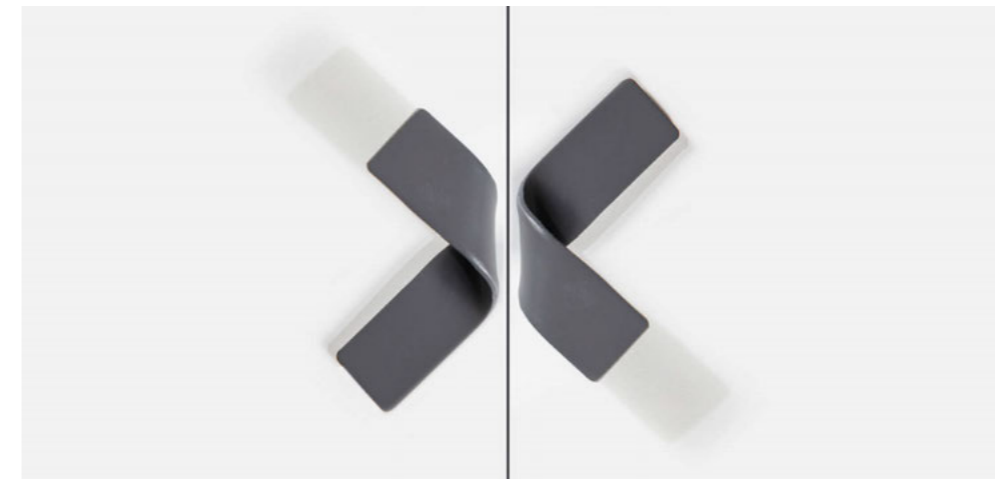
ARROW



SAIL



SAIL



FIOCCO



TRACK



LINE

NOBILITATI PER FRONTALI MELAMINES FOR FRONT PARTS



Colori indicativi. Per verificare i toni reali consultare campioni.

Colours as indications. In order to check the real shades, refer to samples.

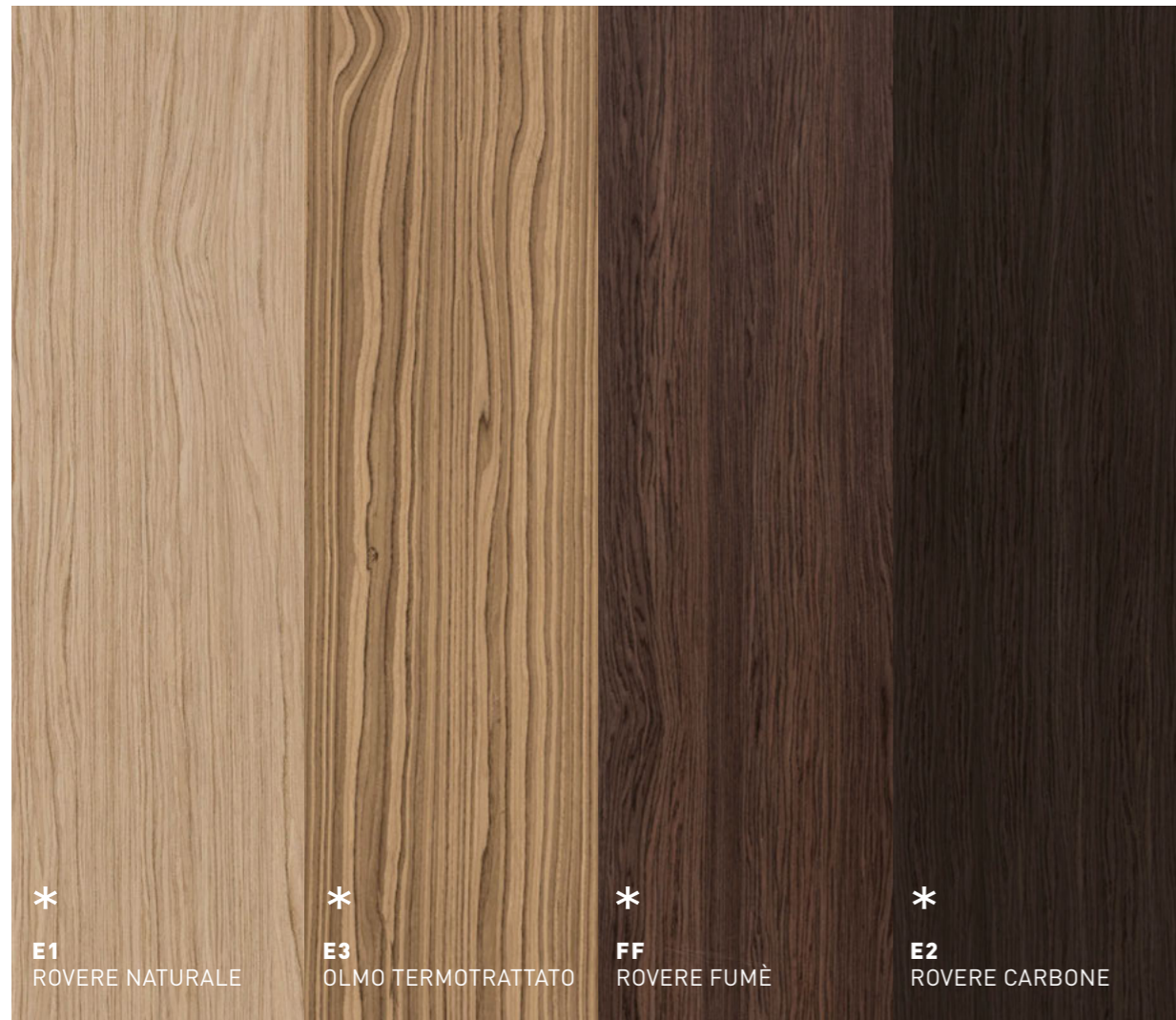
NOBILITATI PER INTERNI MELAMINES FOR INNER PARTS



Colori indicativi. Per verificare i toni reali consultare campioni.

Colours as indications. In order to check the real shades, refer to samples.

ESSENZE WOODS



\*Per questi colori è possibile avere la finitura ESSENZA LUCIDA (EL).

\*GLOSSY WOOD (EL) finish available for these colours.

Colori indicativi. Per verificare i toni reali consultare campioni.

Colours as indications. In order to check the real shades, refer to samples.

LACCATI LACQUERED  
VETRO EXTRACHIARO RETRO LACCATO EXTRA -CLEAR LACQUERED GLASS



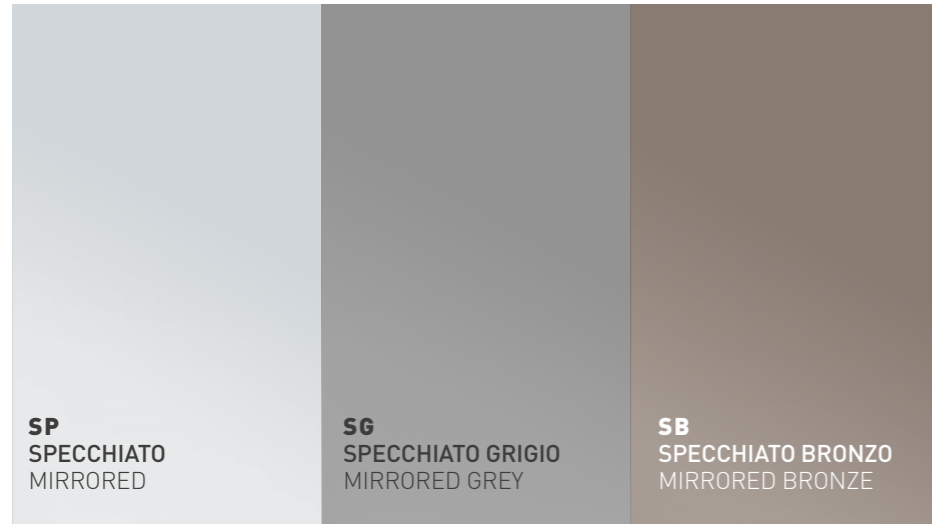
\*questi colori sono disponibili anche in finitura LACCATO LUCIDO

\*these colours are available in GLOSSY LACQUERED finish too

Colori indicativi. Per verificare i toni reali consultare campioni.

Colours as indications. In order to check the real shades, refer to samples.

VETRO SPECCHIATO **MIRRORED GLASS**



Colori indicativi. Per verificare i toni reali consultare campioni.

Colours as indications. In order to check the real shades, refer to samples.

STAMPE DIGITALI A RIGHE ORIZZONTALI\*  
**DIGITAL PRINT WITH HORIZONTAL STRIPES\***



Stampa digitale realizzabile esclusivamente su anta vetro con telaio nero alluminio ART.ATA 47/48

Digital print to be realized on blackframed glass door ART.ATA47/48 only

\* Solo con vetro fumè  
\* With smoked glass only

TESSUTO IN RILIEVO SEMI-TRASPARENTE\*  
**SEMI-TRANSPARENT RAISED FABRIC\***



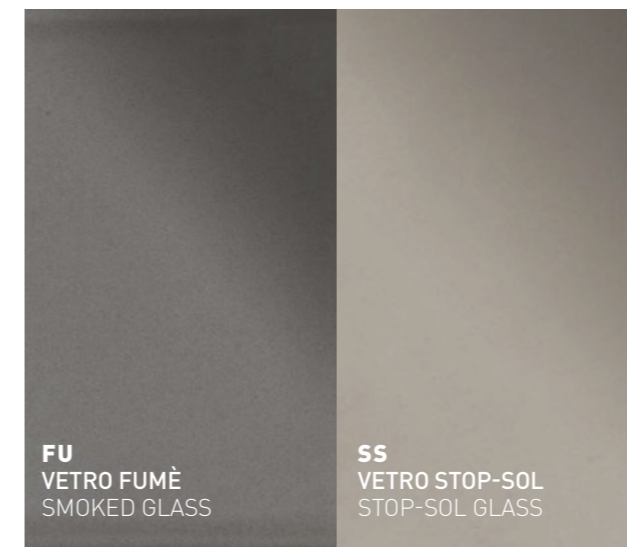
Pellicola tessuto da applicare esclusivamente su anta vetro con telaio nero alluminio ART.ATA 47/48

Fabric film to be applied on blackframed glass door ART.ATA47/48 only

\* Solo con vetro trasparente extrachiaro

\* With extra-clear transparent glass only

TIPOLOGIE DI VETRO **KIND OF GLASS**



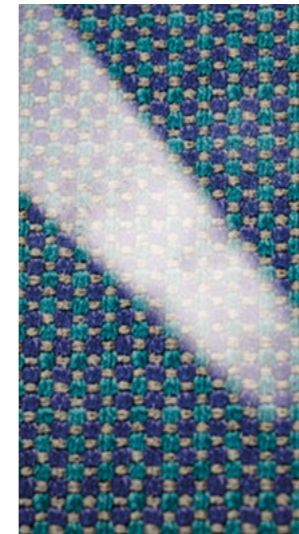
Il coraggio nel proporre un nuovo modo di vivere spazi e luoghi all'insegna della creatività, VETRO, vero, non un gioco di parole ma una tecnologia ideata dal nostro laboratorio che dà vita ad un connubio tra la lucentezza del vetro e la purezza di molteplici materiali nobili. Questo permette una visione rivoluzionaria attraverso la lente di VETRO del mondo materico che caratterizza e rende uniche le collezioni Tumidei.

VETRO®

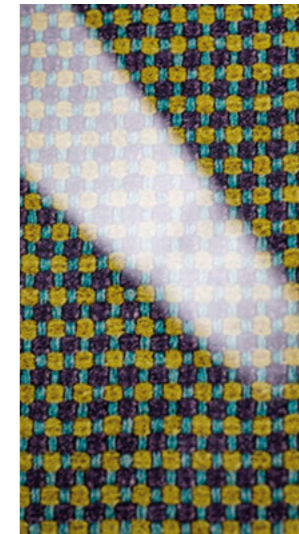
The courage to present a new way of living spaces and places dominated by creativity: VETRO, vero, not a play on words but a technology conceived by Tumidei's lab which creates a combination between the sheen of the glass and the pureness of several selected materials. This leads to a revolutionary vision of the matter world through VETRO's lens that characterizes all the Tumidei's collections, making them unique.



WDT244



WDSCU004



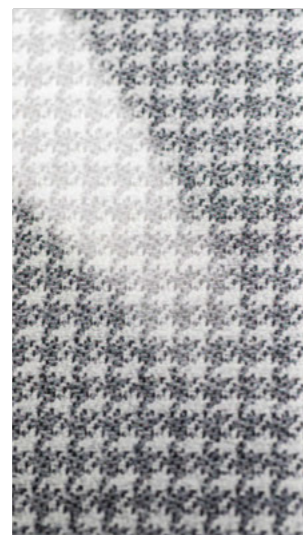
WDSCU006



WDSCU007



WDT240



WDT241



WDT242



WDT243



WDT245



WDCAN011



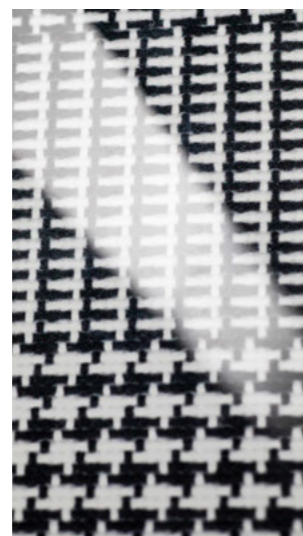
WDCAN012



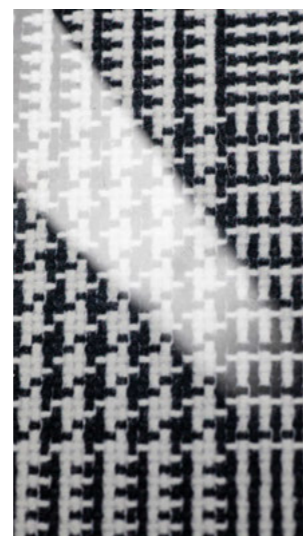
WDCAN002



WDT246



WDCON100



WDCON032



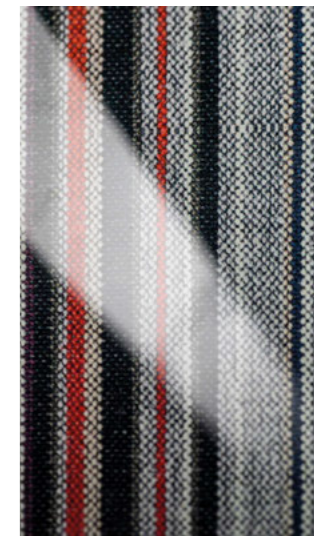
WDCON007



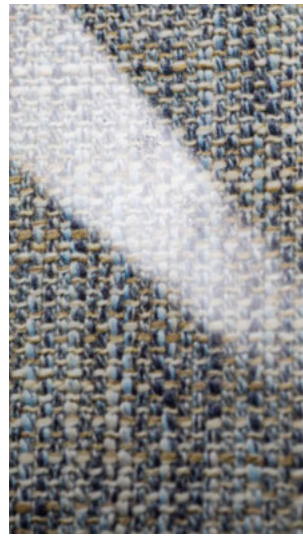
WDT260



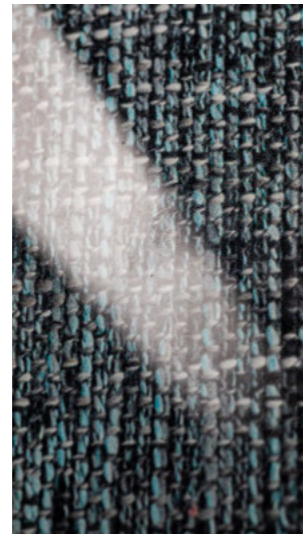
WDT261



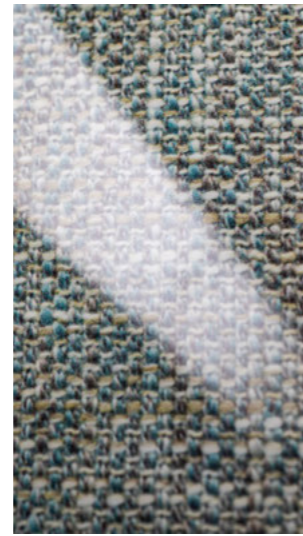
WDT262



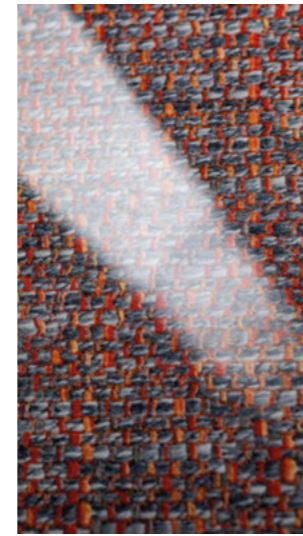
WDBLI018



WDBLI021



WDBLI005



WDBLI016

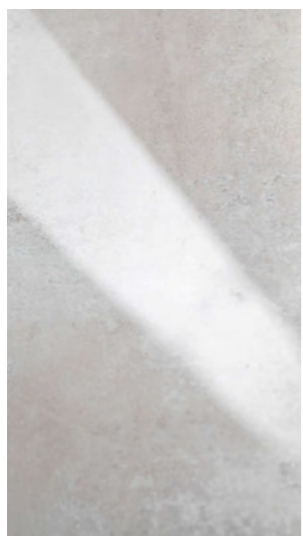


WDBLI023



WDBLI001

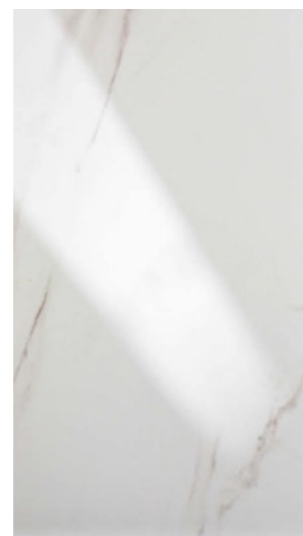
VETRO®



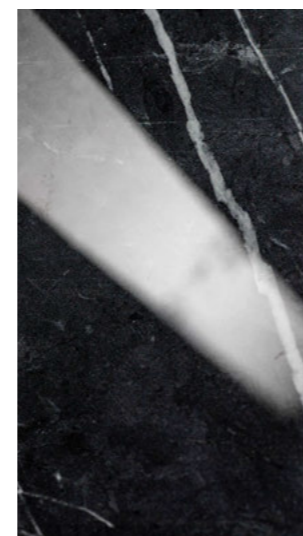
WDCEM001



WDCEM002

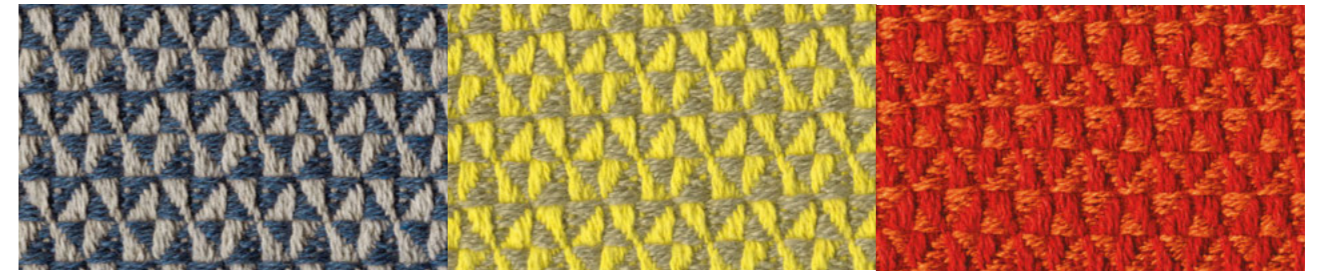


WDMAR001



WDMAR002

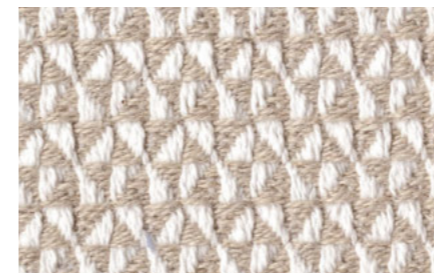
CAN CAN - TeD



CAN011

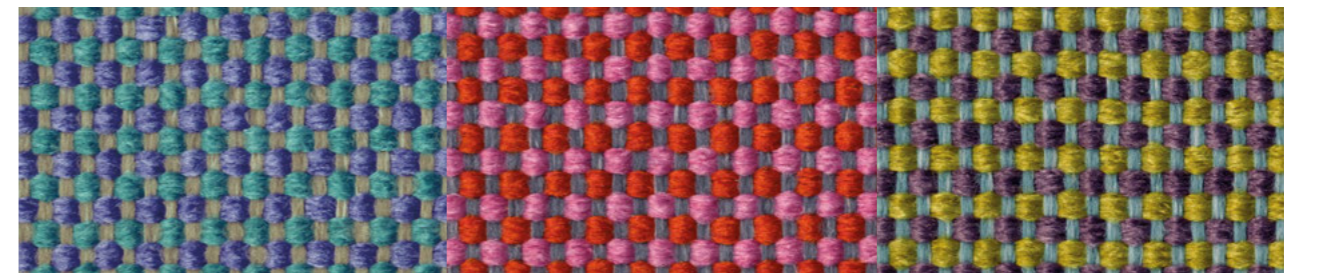
CAN002

CAN025



CAN012

SCUBIDU VICHY- TeB

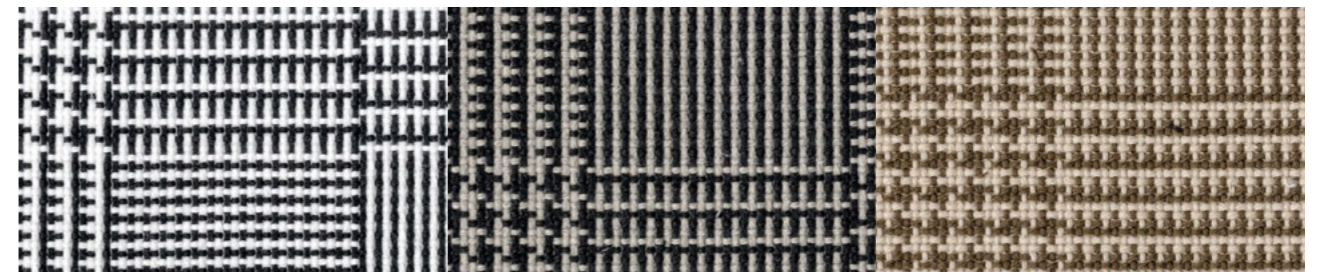


SCU004

SCU007

SCU006

CONNERY- TeD



CON100

CON032

CON007

Colori indicativi. Per verificare i toni reali consultare campioni.

Colours as indications. In order to check the real shades, refer to samples.

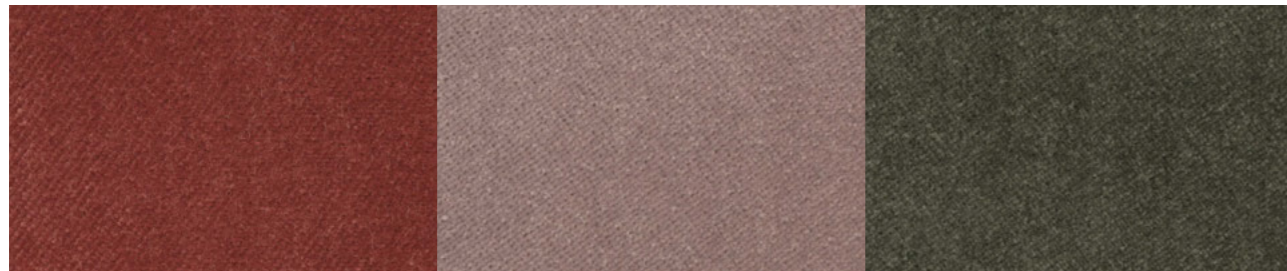
ASTON - TeE



AST025

AST003

AST092

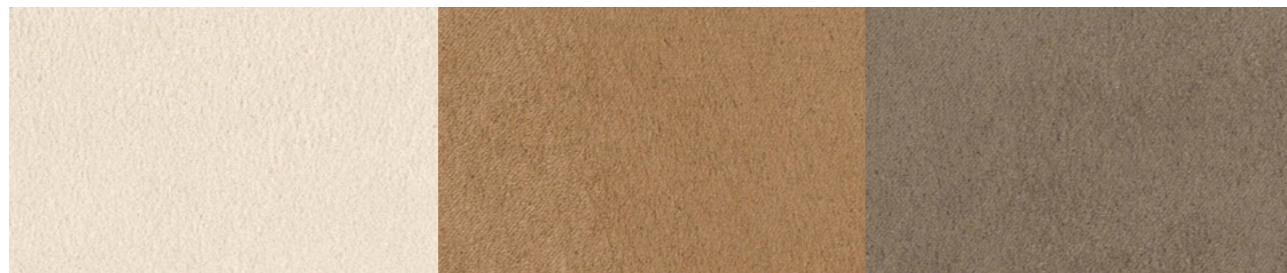


AST053

AST029

AST099

DEUS - TeE



DEU100

DEU413

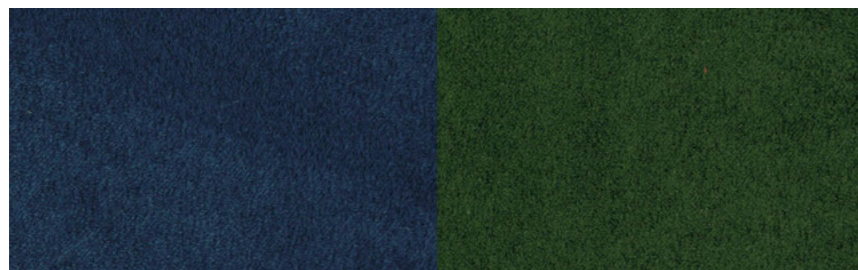
DEU603



DEU319

DEU604

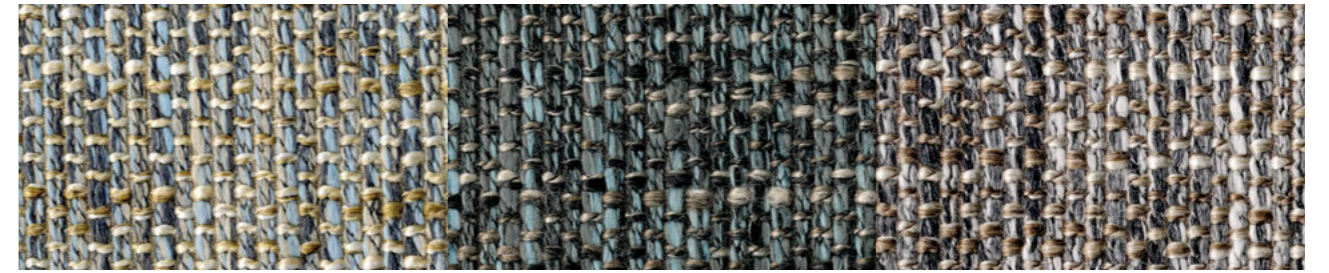
DEU611



DEU704

DEU800

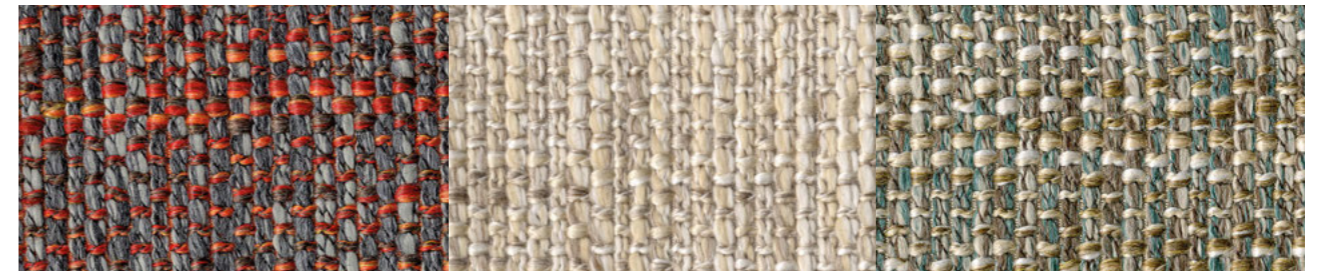
BLIZZARD - TeD



BLI018

BLI021

BLI023

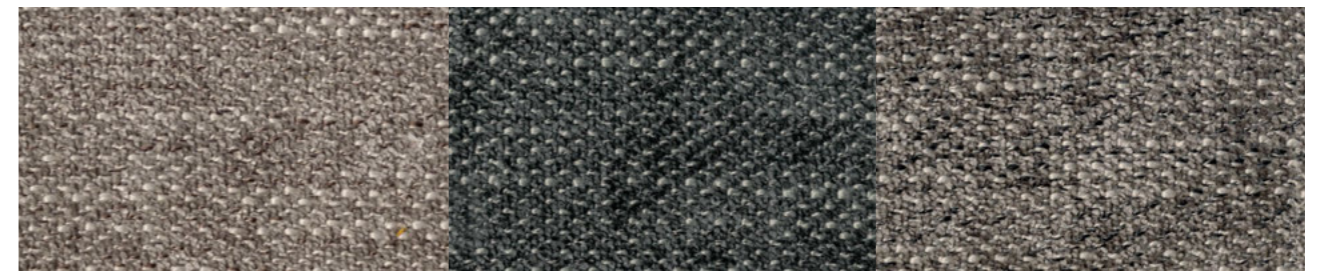


BLI016

BLI001

BLI005

MIZAR - TeA



MIZ009

MIZ011

MIZ010



MIZ020

MIZ014

MIZ006

Colori indicativi. Per verificare i toni reali consultare campioni.

Colours as indications. In order to check the real shades, refer to samples.

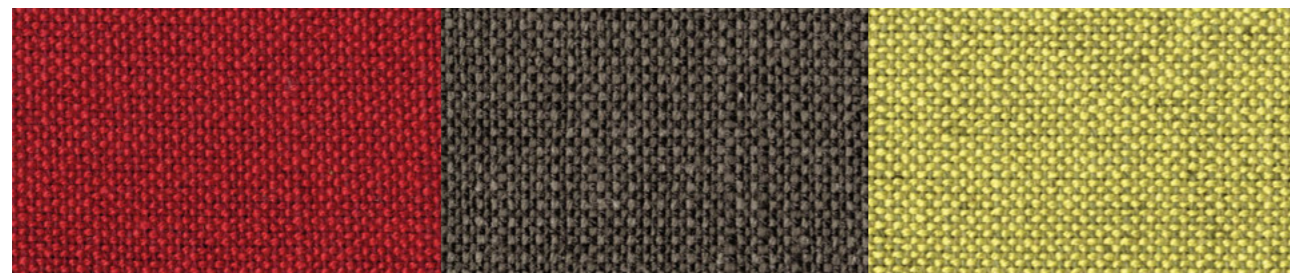
SESIA - TeB



SES012

SES009

SES028



SES026

SES005

SES030



SES029

SES021

SES003



SES023

SES033

SES016

Colori indicativi. Per verificare i toni reali consultare campioni.

Colours as indications. In order to check the real shades, refer to samples.

GRACE - TeA



GRA001

GRA016

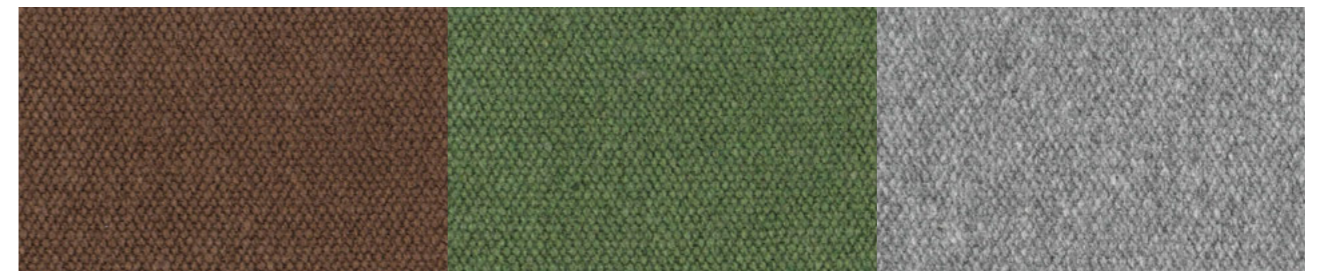
GRA015



GRA022

GRA009

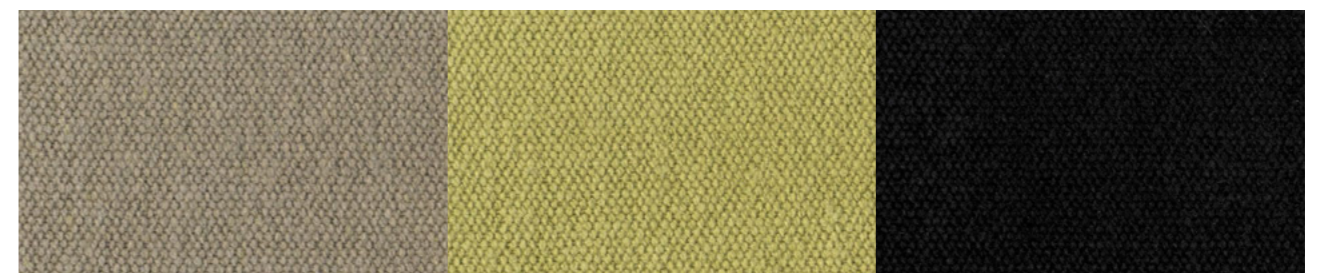
GRA030



GRA006

GRA012

GRA033



GRA010

GRA011

GRA036

Colori indicativi. Per verificare i toni reali consultare campioni.

Colours as indications. In order to check the real shades, refer to samples.



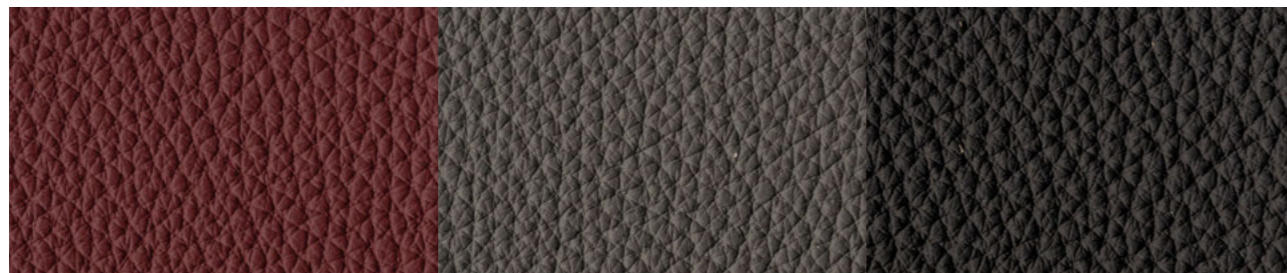
PELLE MARTELLATA - PeA



MAR765

MAR769

MAR744



MAR747

MAR752

MAR731

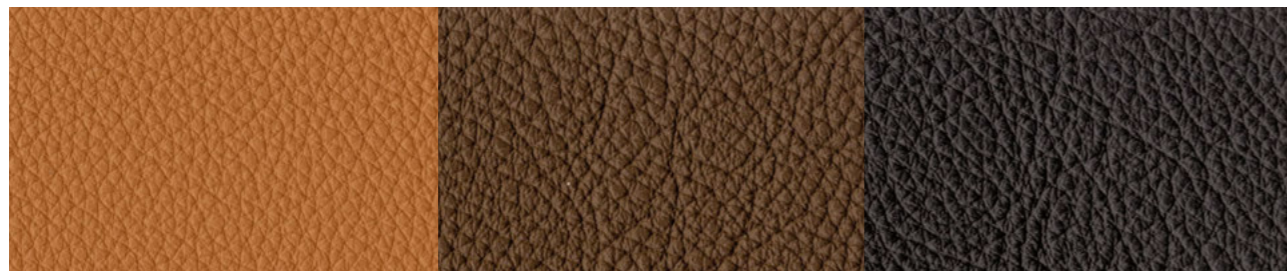
ELEGANCE - PeB



ELE301

ELE304

ELE204



ELE218

ELE217

ELE207

Colori indicativi. Per verificare i toni reali consultare campioni.

Colours as indications. In order to check the real shades, refer to samples.

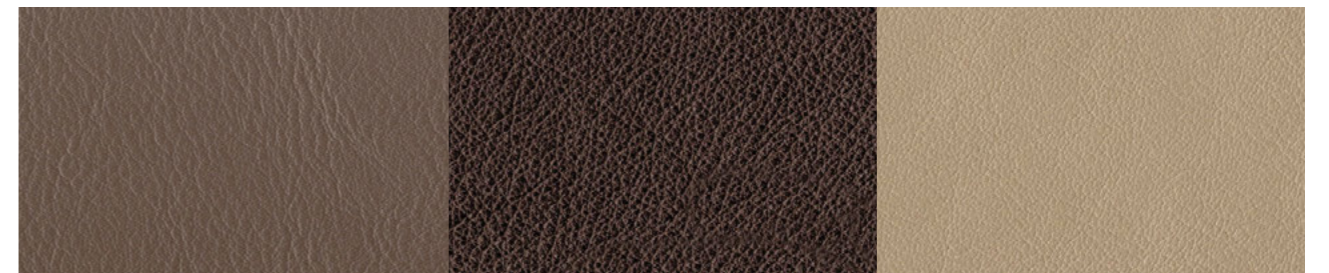
SAUVAGE - PeB



SAU031

SAU032

SAU034



SAU036

SAU037

SAU038

ECOPELLE - TeA



ECO111

ECO101

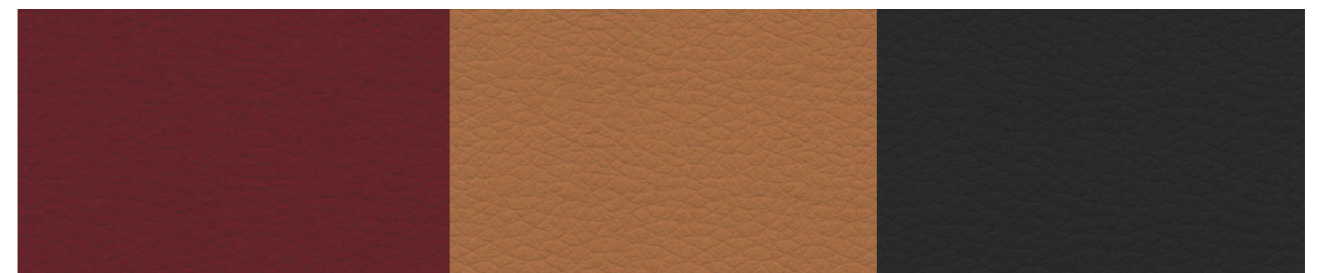
ECO606



ECO604

ECO315

ECO710



ECO313

ECO412

ECO200

Art Direction

Tumidei Lab

Concept & Graphic design

Michela Boglietti

Set designer

Paola Citterio

Photo

Studio Eleven

Colour separation

CD Cromo

Print

Modulgrafica

Printed in Italy 5.2019

© 2018, TUMIDEI Spa

Tutti i diritti riservati.

Nessuna parte del presente catalogo può essere riprodotta o diffusa con un mezzo qualsiasi, fotocopie, microfilm o altro, senza il permesso del titolare del copyright.

All rights reserved.

No part of this catalogue may be reproduced or transmitted in any way, by photocopying, microfilm or else, without permission of the copyright holder.

Le tonalità dei colori rappresentati, non potranno mai essere riprodotte fedelmente, sia in relazione al nostro campionario laccati, che alle immagini presenti nei nostri cataloghi.

The shade of the colours shown cannot be faithfully reproduced, with regard to our lacquered samples and to the images which are present in our catalogues.

**TUMIDEI®**

S. Cassiano in Pennino 57/A - 47016 Predappio (FC) Italy  
T. +39 0543.921.076 r.a. - F. +39 0543.921.079  
info\_italia@tumidei.it - export@tumidei.it - www.tumidei.it

