

# SAMPLES

## CAMPIONARIO

# MATERIALI

MATERIALS

# LEGNO WOOD

## FAGGIO | BEECH



Faggio  
Beech

## IROKO | IROKO



Iroko  
Iroko

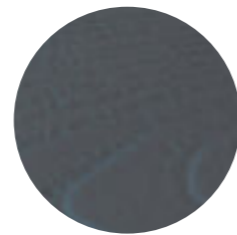
## FRASSINO | ASH



Frassino  
Ash



Frassino Nero  
Black Ash



Frassino Antracite  
Anthracite Ash



Frassino Tinto Rovere  
Ash Stained Oak



Frassino Tinto Noce  
Ash Stained Walnut



Anilina Nera  
Black Aniline



Anilina Bianca  
White Aniline

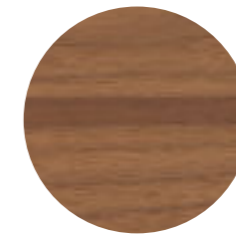


Anilina Verde Veronese  
Veronese Green Aniline



Anilina Rosso Marsala  
Marsala Red Aniline

## NOCE | WALNUT



Noce Canaletto  
Canaletto Walnut

## ROVERE | OAK



Rovere Fiammato  
Flamed Oak



Rovere Vintage  
Vintage Oak

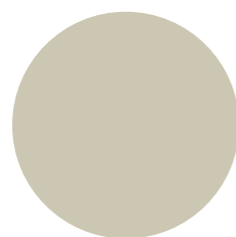


Rovere Termotrattato  
Heat-Treated Oak

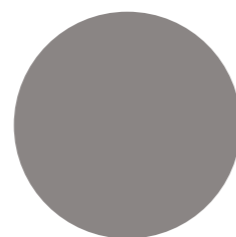
# LACCATI LACQUER



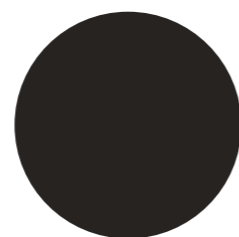
Bianco  
White  
RAL: 9016



Crigio Seta  
Silk Cray  
RAL: 7044



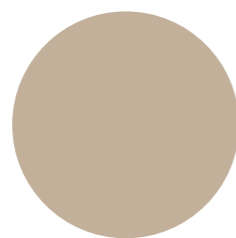
Crigio Polvere  
Dusty Cray  
RAL: 7037



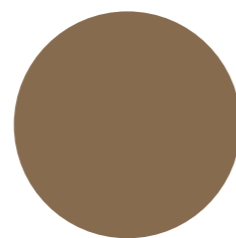
Nero  
Black  
RAL: 9005



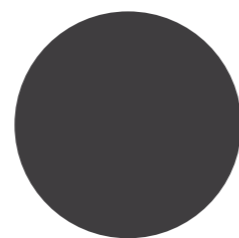
Canapa  
Canapa  
NCS 1502-Y



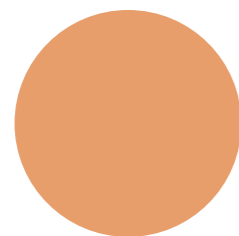
Juta  
Juta  
NCS 3005-Y20R



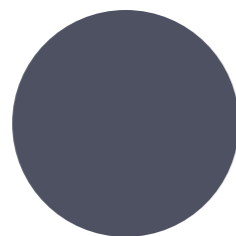
Visone  
Visone  
NCS 6010-Y60R



Antracite  
Anthracite  
RAL: 7016



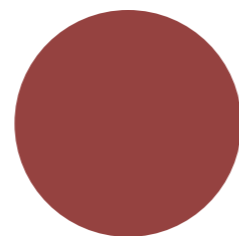
Albicocca  
Apricot  
NCS S2030 40R



Blu Intenso  
Intense Blue  
NCS S-6020 R-80B

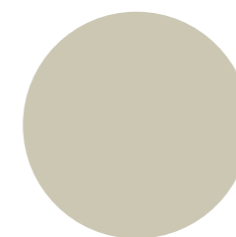


Verde Veronese  
Veronese Green  
NCS S-5040 B-50C

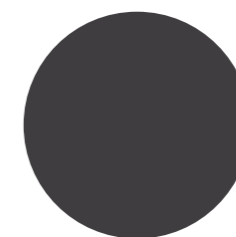


Rosso Marsala  
Marsala Red  
NCS S4040R

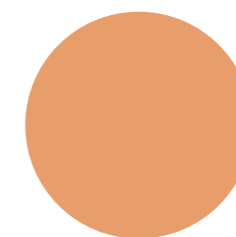
# POLIPROPILENE POLYPROPYLENE



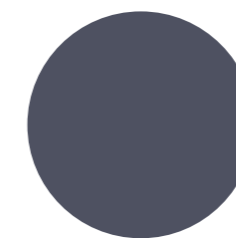
Crigio Seta  
Silk Cray  
RAL: 7044



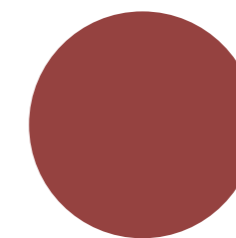
Antracite  
Anthracite  
RAL: 7016



Albicocca  
Apricot  
NCS S2030 40R

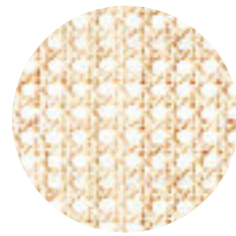


Blu Intenso  
Intense Blue  
NCS S-6020 R-80B

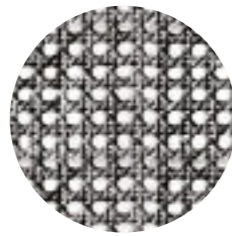


Rosso Marsala  
Marsala Red  
NCS S4040R

# PAGLIA DI VIENNA VIENNA STRAW



Paglia di Vienna  
Vienna Straw

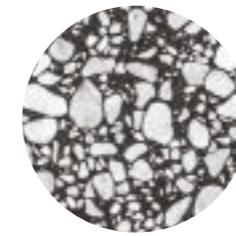


Paglia di Vienna Nera  
Black Vienna Straw



Paglia di Fiume  
Traditional Straw

# MARMO MARBLE

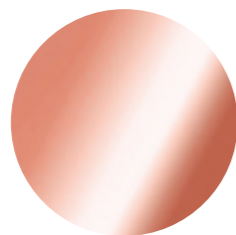


Palladio Moro  
Palladio Moro



Palladio Doge  
Palladio Doge

# METALLO METAL



Rame  
Copper



Oro Rosa Opaco  
Rose Gold Matt

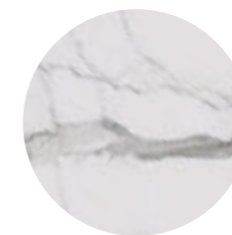


Bronzè  
Bronze

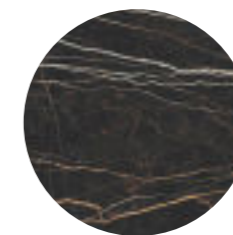


Metallo Zincato  
Zinc-coated Metal

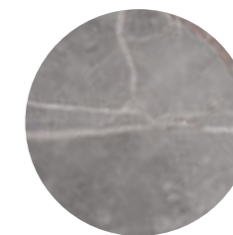
# GRES PORCELLANATO PORCELAIN STONEWARE



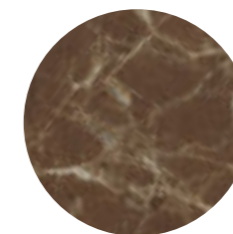
Statuario Bianco  
Statuario White



Thundernight  
Thundernight



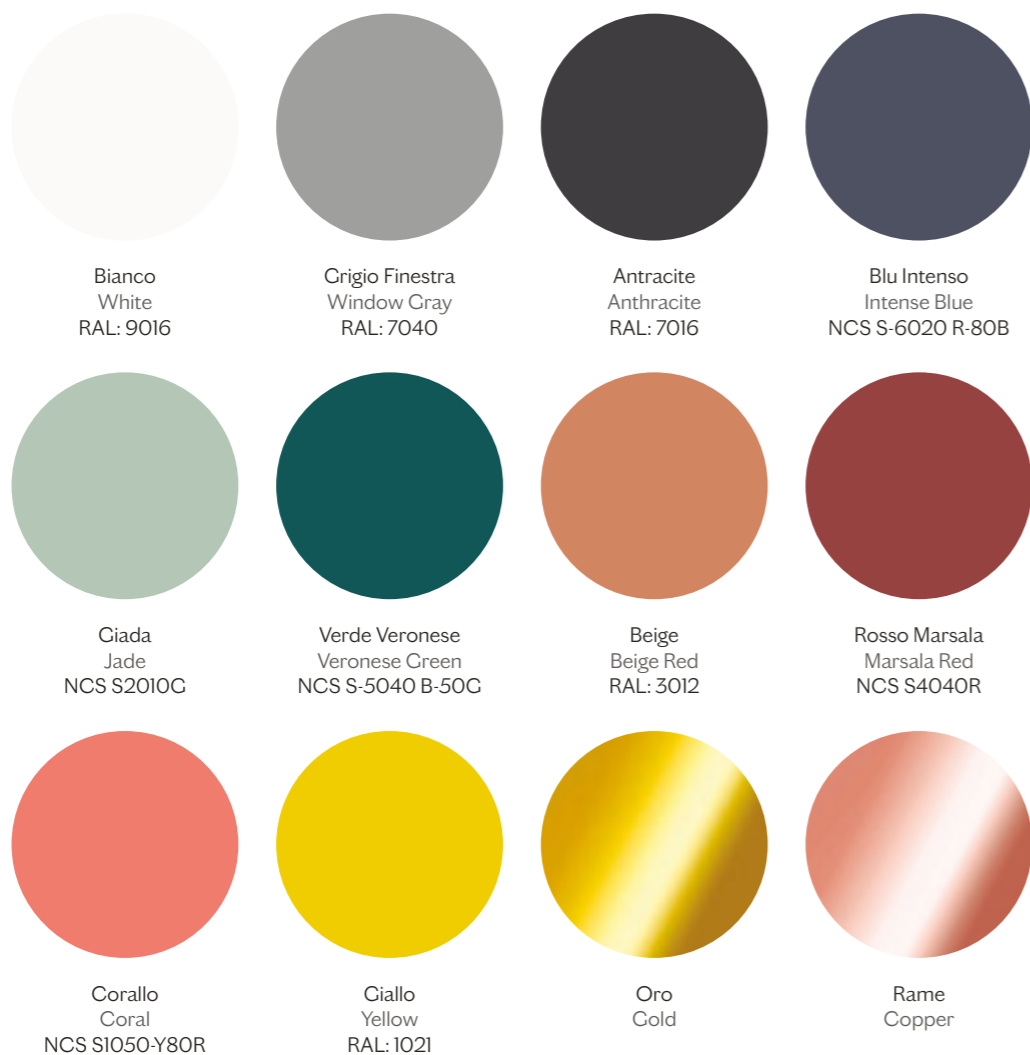
Étoile Cris  
Étoile Cris



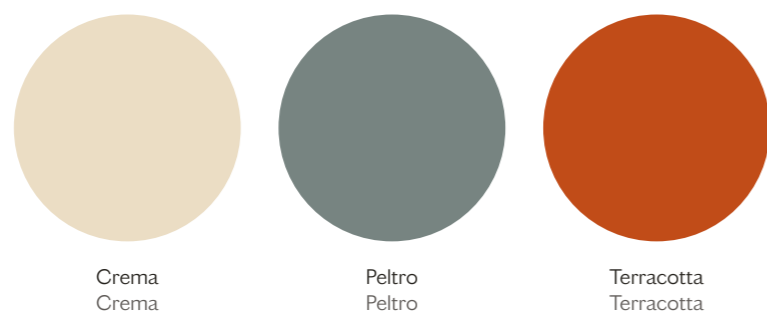
Emperador  
Emperador

# CERAMICA CERAMIC

## OPACA | MATT

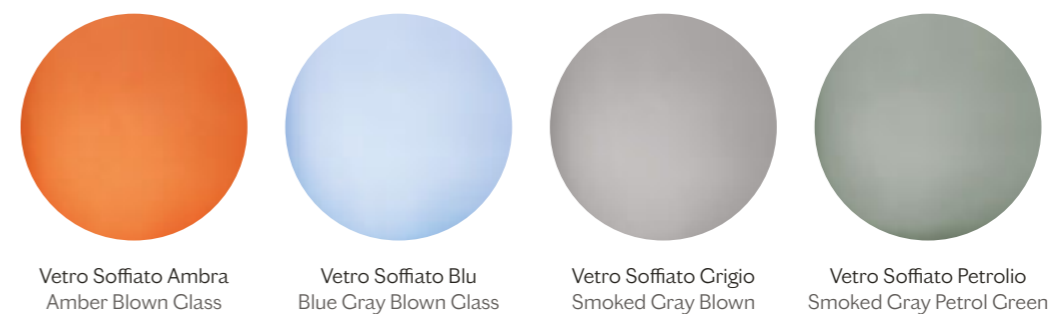


## CERAMICA SMALTATA | GLAZED CERAMIC

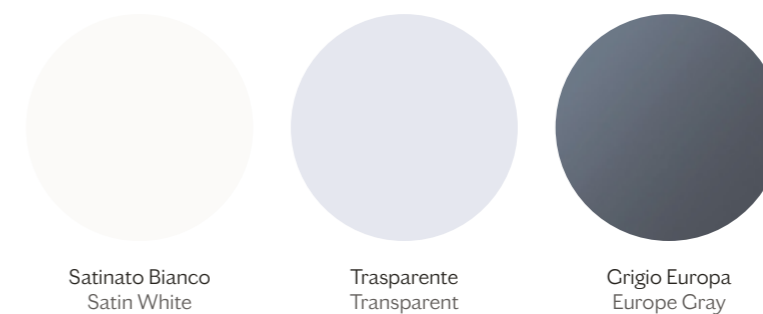


# VETRO GLASS

## SOFFIATO | BLOWN



## PIANO | FLOAT



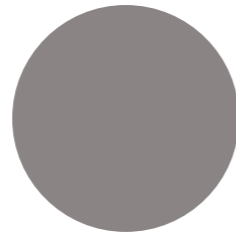
# FENIX FENIX



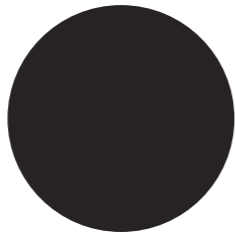
Bianco Malè  
White Malè



Grigio Efeso  
Efeso Crey



Grigio Londra  
London Cray



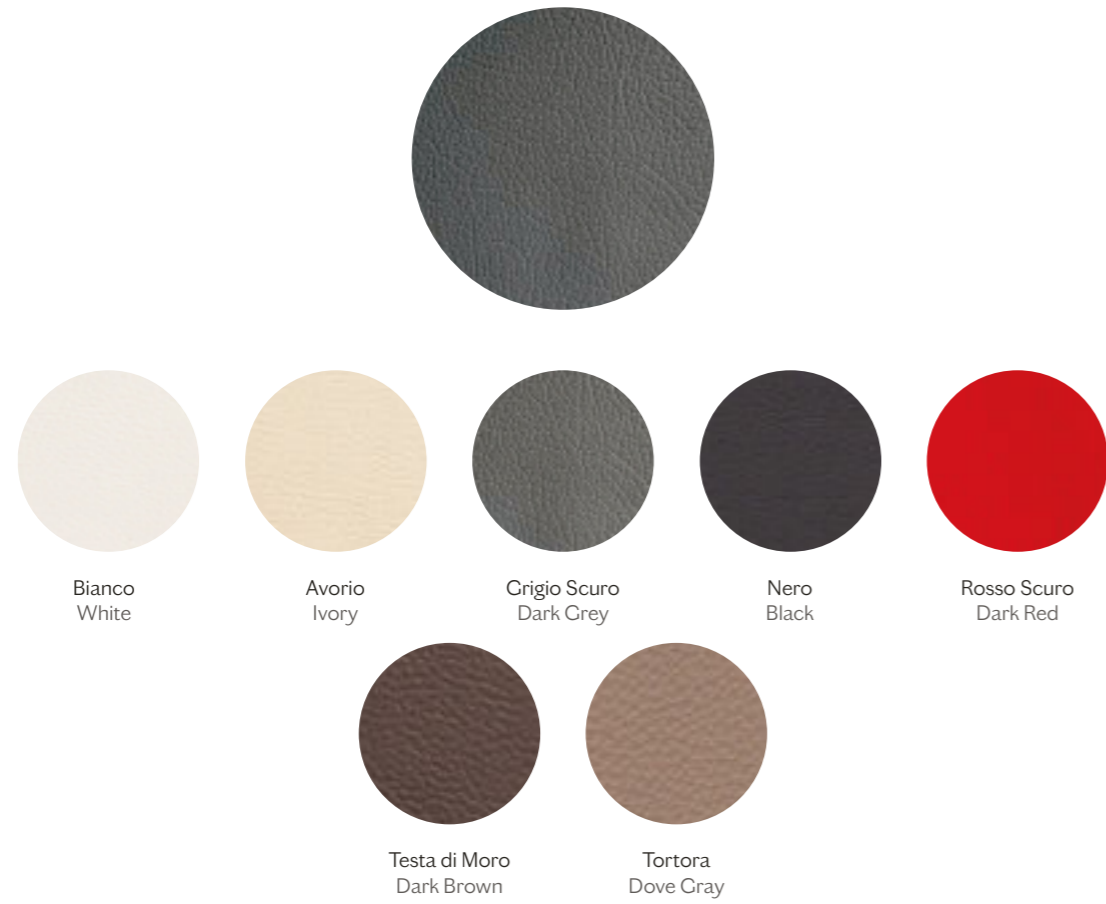
Nero  
Black

# TRESSUTI

FABRICS

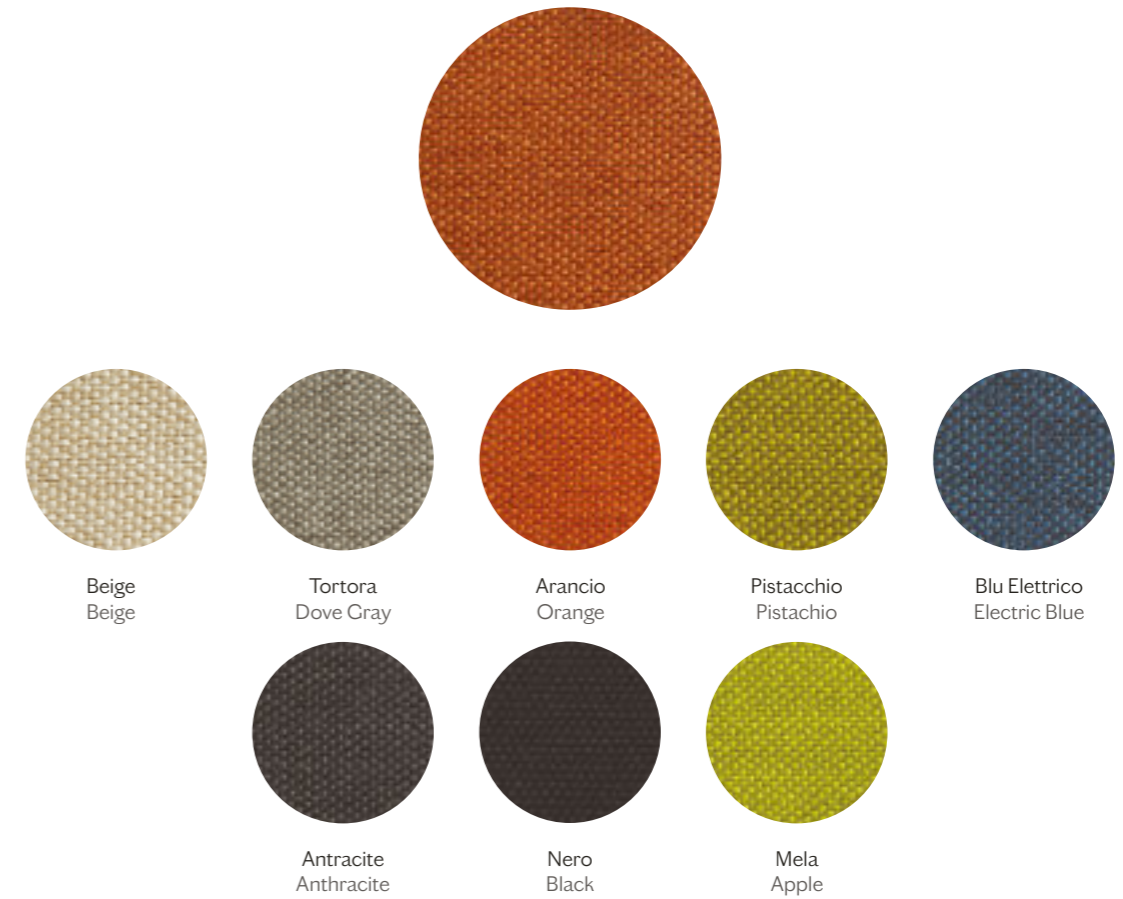


ECOPELLE | ECOLEATHER



composizione: 30% cotone, 70% poliestere  
 composition: 30% cotton, 70% polyester  
 durabilità | durability: 50.000 martindale  
 peso | weight: 580 gr/m<sup>2</sup>  
 ignifugo | fireproof: no

TRAMÈ



composizione: 100% poliestere | composition: 100% polyester  
 durabilità | durability: 100.000 martindale  
 peso | weight: 350 gr/m<sup>2</sup>  
 solidità del colore alla luce | color fastness to light: 5  
 pilling | pilling: 4  
 resistenza allo scorrimento dei fili | seam slippage: warp 2,5, weft 9  
 ignifugo | fireproof: BS 5852 source 0  
 note: idrorepellente | note: water-repellent

## SHOCK



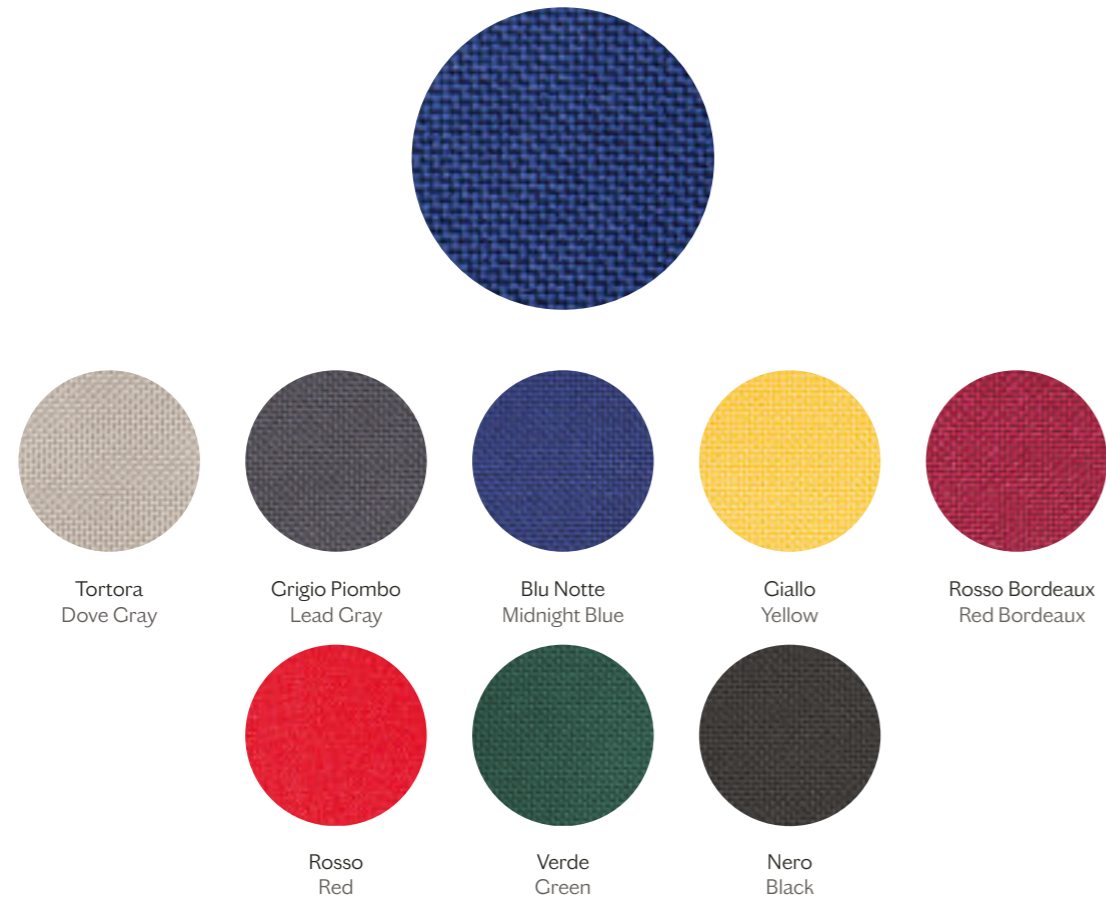
composizione: 100% polipropilene | composition: 100% polypropylene  
 durabilità | durability: 50.000 martindale  
 peso | weight: 525 gr/m<sup>2</sup>  
 solidità del colore alla luce: 5 (chiari, scuri), 4 (medi)  
 color fastness to light: 5 (light, dark), 4 (medium)  
 pilling | pilling: 4  
 ignifugo | fireproof: no  
 note: irrestringibile, resistente a muffe e batteri, non trattiene gli odori,  
 100% ecologico e riciclabile | note: no-shrink, mold and bacteria resistant,  
 odour not retained, 100% eco-friendly and recyclable

## TANIMO



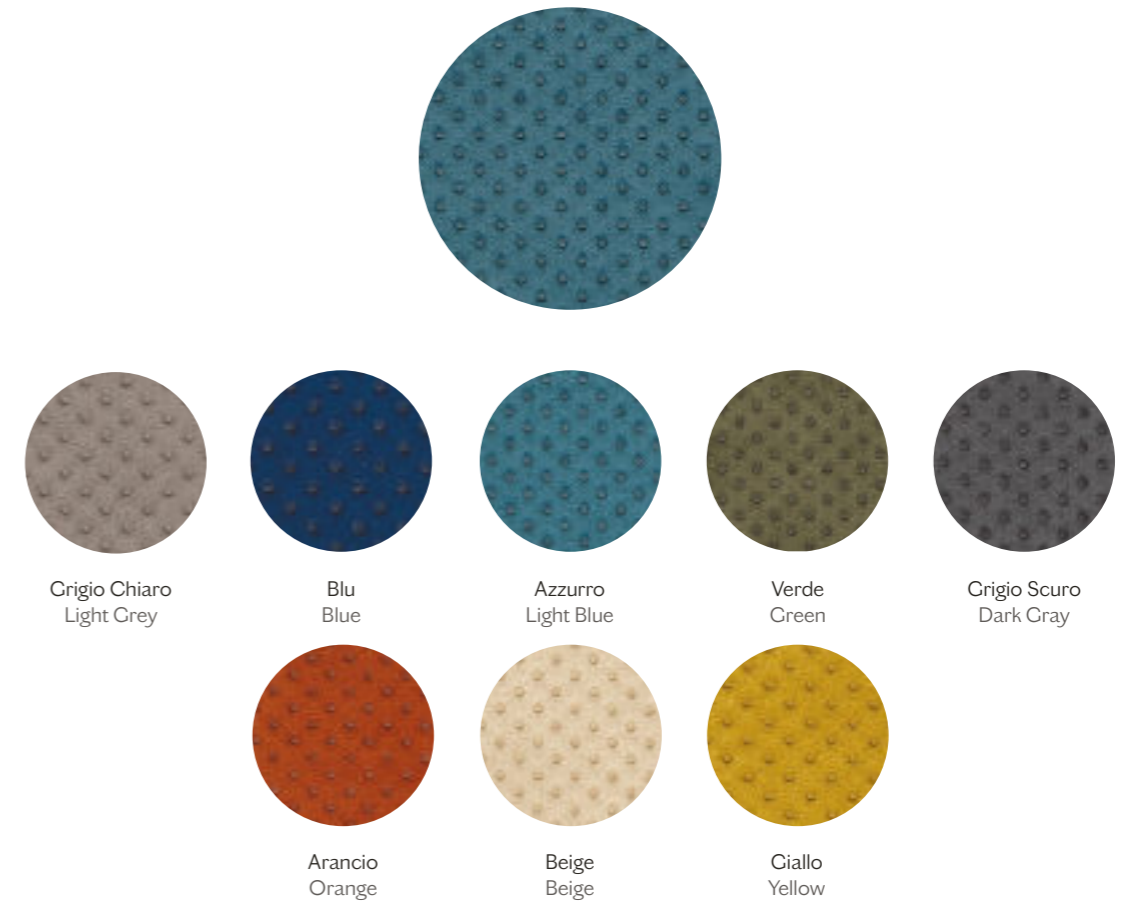
composizione: 100% poliestere | composition: 100% polyester  
 durabilità | durability: 100.000 martindale  
 peso | weight: 575 gr/m<sup>2</sup>  
 solidità del colore alla luce: 3/4 (medi, scuri), 4 (chiari)  
 color fastness to light: 3/4 (medium, dark), 4 (light)  
 pilling | pilling: 5  
 ignifugo | fireproof: no  
 note: idrorepellente | note: water-repellent

LOOP



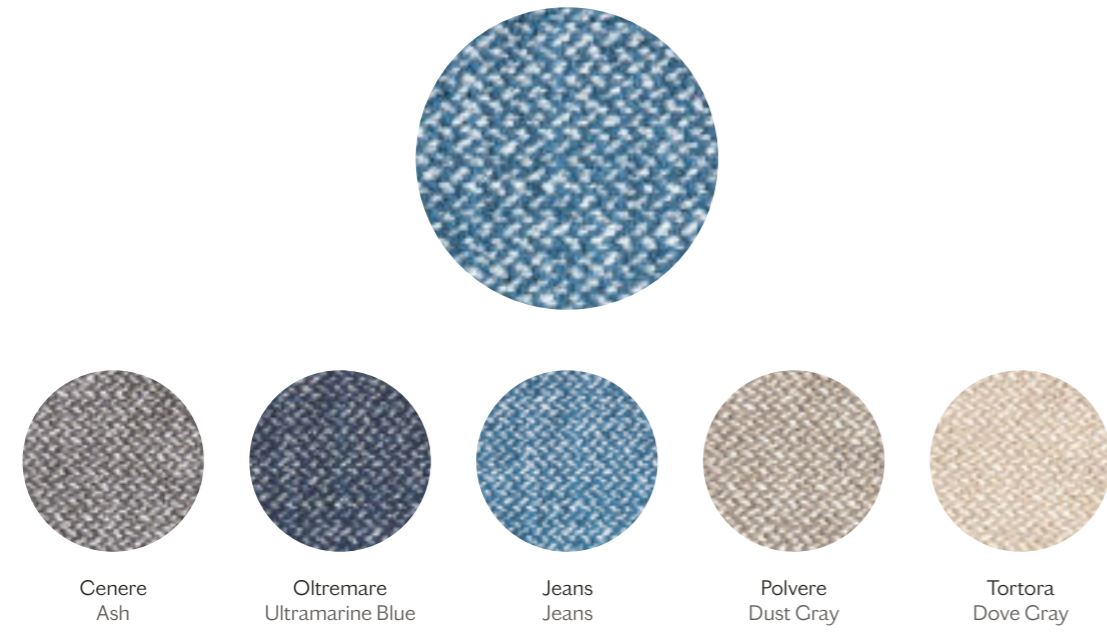
composizione: 100% poliestere | composition: 100% polyester  
 durabilità | durability: 100.000 martindale  
 peso | weight: 280 gr/m<sup>2</sup>  
 solidità del colore alla luce | color fastness to light: 5  
 pilling | pilling: 5  
 ignifugo | fireproof: BS 5852 source 0, DIN EN 1021-1  
 note: idrorepellente | note: water-repellent

SPONGE



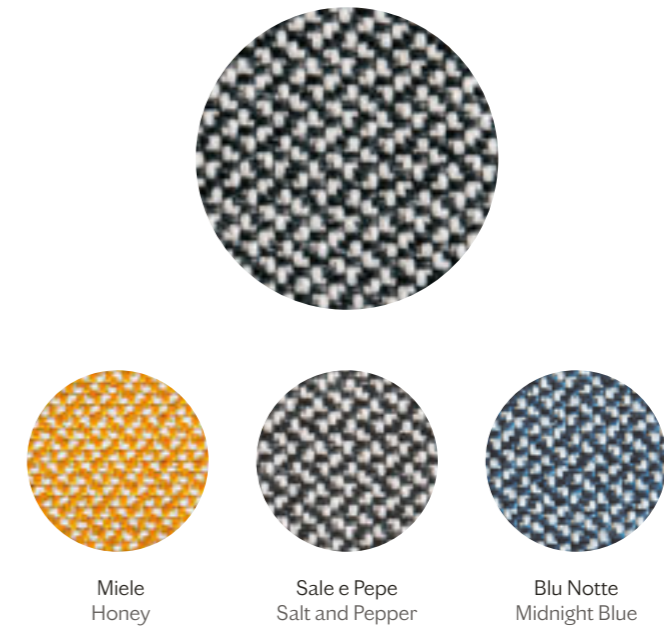
composizione: 100% poliestere | composition: 100% polyester  
 durabilità | durability: 30.000 martindale  
 peso | weight: 700 gr/m<sup>2</sup>  
 solidità del colore alla luce | color fastness to light: 4  
 pilling | pilling: 4/5  
 ignifugo | fireproof: no  
 note: idrorepellente | note: water-repellent

TWINS



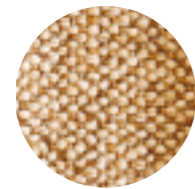
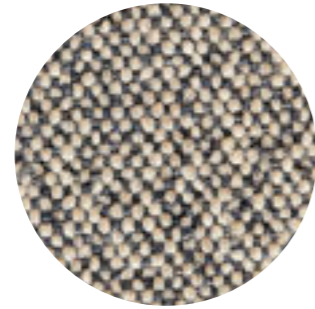
composizione: 75% cotone, 20% acrilico, 5% poliestere  
 composition: 75% cotton, 20% acrylic, 5% polyester  
 durabilità | durability: 23.000 martindale  
 peso | weight: 780 gr/m<sup>2</sup>  
 solidità del colore alla luce | color fastness to light: 4  
 pilling | pilling: 4/5  
 ignifugo | fireproof: no

ETNA

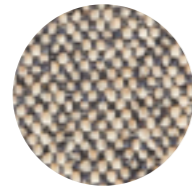


composizione: 100% polipropilene | composition: 100% polypropylene  
 durabilità | durability: 25.000 martindale  
 peso | weight: 325 gr/m<sup>2</sup>  
 solidità del colore alla luce: 5 (chiari, scuri), 4 (medi)  
 color fastness to light: 5 (light, dark), 4 (medium)  
 pilling | pilling: 4  
 ignifugo | fireproof: class 1 IM BS 5852 part 1 and 2

## MODÌ



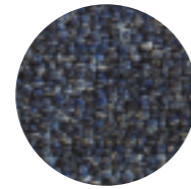
Mandorla  
Almond



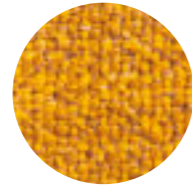
Sale e Pepe  
Salt and Pepper



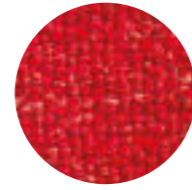
Pietra  
Stone Grey



Blu Notte  
Midnight Blue



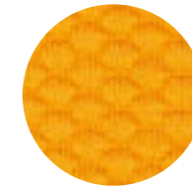
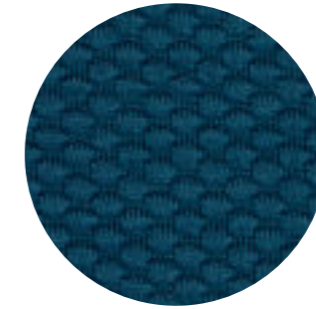
Zafferano  
Saffron Yellow



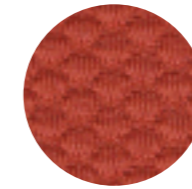
Ciliegia  
Cherry

composizione: 80% poliacrilico, 20% YU  
 composition: 80% polyacryl, 20% YU  
 durabilità | durability: 40.000 martindale  
 peso | weight: 530 gr/m<sup>2</sup>  
 solidità' del colore alla luce | color fastness to light: 4  
 pilling | pilling: 4  
 ignifugo | fireproof: no

## MILLENNIAL VISUAL



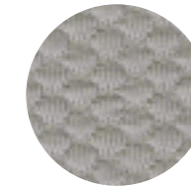
315



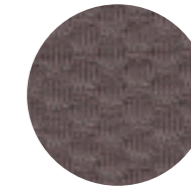
327



328



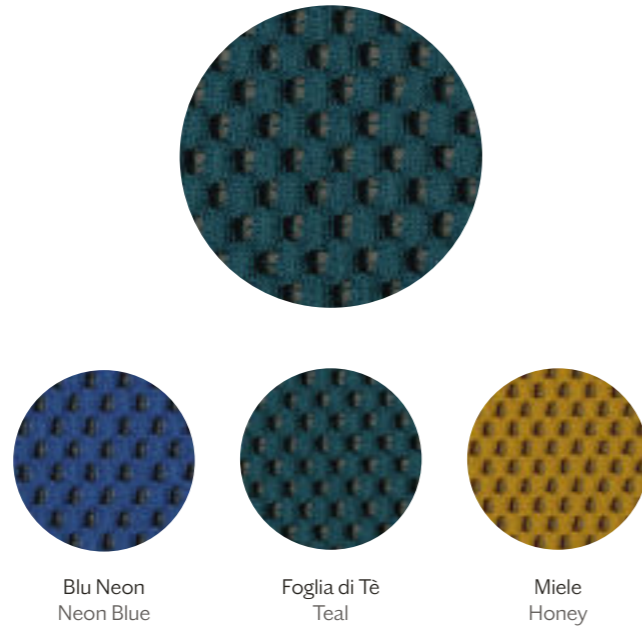
313



319

composizione: 100% fibre di poliestere (resistente al fuoco)  
 composition: 100% polyester fibres (flamed retardant)  
 durabilità | durability: 60.000 martindale  
 peso | weight: 440 gr/m<sup>2</sup>  
 solidità' del colore alla luce | color fastness to light: 4/5  
 pilling | pilling: 4  
 ignifugo | fireproof: DIN 4102-1 B1, BS 5852-1 (source 0 and 1), BS 5852 CRIB5,  
 UNI 9175 class IIM, EN 1021-1, EN 1021-2, IMO FTP CODE 2010  
 note: resistente alla lacerazione, elastico, fonoassorbente | note: tear strenght,  
 elasticity, sound absorbing

MESH



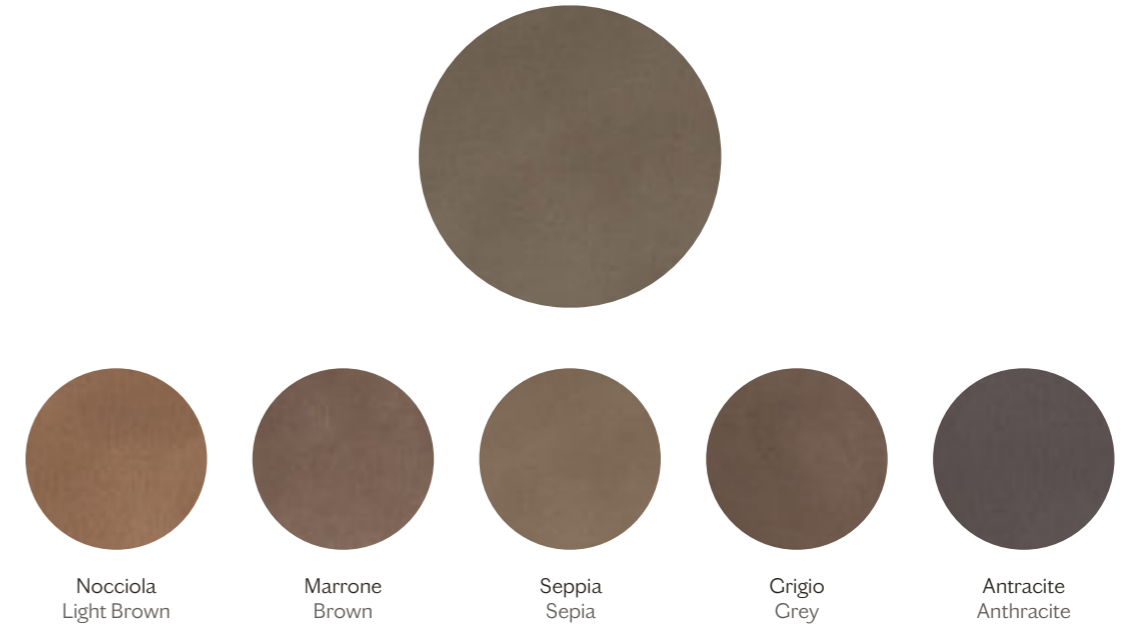
Blu Neon  
Neon Blue

Foglia di Tè  
Teal

Miele  
Honey

composizione: 100% poliestere  
 composition: 100% polyester  
 durabilità | durability: 30.000 martindale  
 peso | weight: 550 gr/m<sup>2</sup>  
 ignifugo | fireproof: Ignifugo classe 1 IM, BS 5852-1, BS 5852, CRIB5, EN 1021-1/2

ECONABUK



Nocciola  
Light Brown

Marrone  
Brown

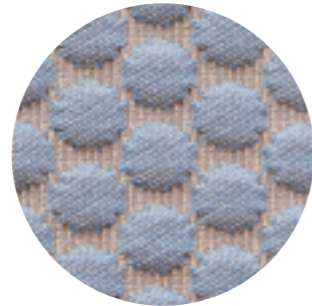
Seppia  
Sepia

Grigio  
Grey

Antracite  
Anthracite

composizione: 68% pvc, 30% fibre di poliestere, 2% poliestere  
 composition: 68% pvc, 30% polyester fibres, 2% polyester  
 durabilità | durability: 20.000 martindale  
 peso | weight: 720 gr/m<sup>2</sup>  
 solidità' del colore alla luce | color fastness to light: 6  
 ignifugo | fireproof: UNI 9175: class 1 IM, BS 5852-1 sch5. part.1,  
 BS 5852 CRIB5, EN 1021-2, TB 117:2013

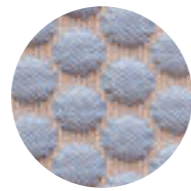
BUBBLE



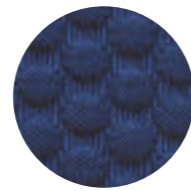
Nero  
Black



Grigio  
Grey



Azzurro  
Light Blue



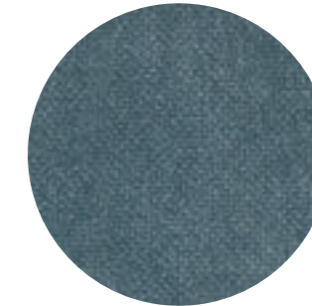
Blu Intenso  
Intense Blue



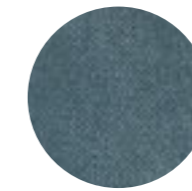
Rosa  
Pink

composizione: 100% fibre di poliestere | composition: 100% polyester fibres  
 durabilità | durability: 35.000 martindale  
 peso | weight: 420 gr/m<sup>2</sup>  
 solidità del colore alla luce | color fastness to light: 5/6  
 pilling | pilling: 4  
 ignifugo | fireproof: BS 5852:2006 (p. 11 CRIB5), EN 1021-1, EN 1021-2,  
 UNI 9175:2010 class IIM  
 note: resistenza alla lacerazione, non si restringe | note: tear strenght, does not  
 shrink

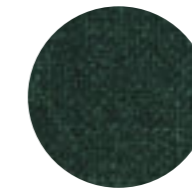
SHELTER VELVET



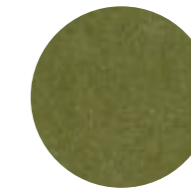
Blu Notte  
Midnight Blue



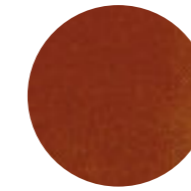
Foglia di Tè  
Teal



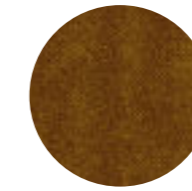
Verde Foresta  
Forest Green



Muschio  
Musk



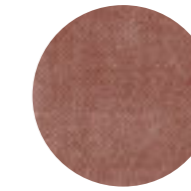
Terra di Siena  
Burnt Siena



Cammello  
Camel



Beige  
Beige



Rosa Antico  
Antique pink

composizione: 100% Poliestere | composition: 100% Polyester  
 durabilità | durability: 100.000 martindale  
 peso | weight: 756 gr/m<sup>2</sup>  
 ignifugo | fireproof: Ignifugo Classe I IM, BS 5852 1-2, EN 1021-1, EN 1021-2

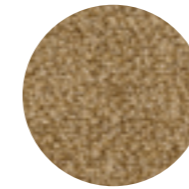
**RAKAM**



Bacca  
Berry

composizione: 72% Cotone, 8% Lino, 15% Viscosa, 5% Poliammide  
 composition: 72% Cotton, 8% Linen, 15% Viscose, 5% Polyammide  
 durabilità | durability: 30.000 martindale  
 peso | weight: 630 gr/m<sup>2</sup>  
 ignifugo | fireproof: No

**BARNUM**



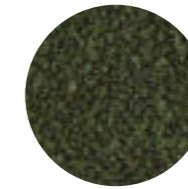
Sabbia  
Sand



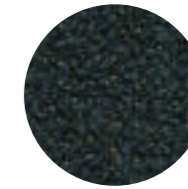
Mandorla  
Almond



Bianco  
White



Foresta  
Forest

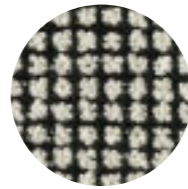
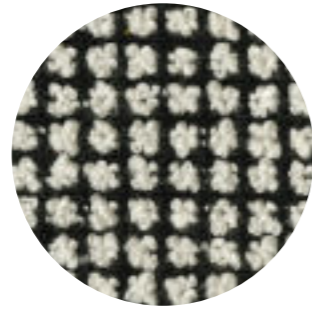


Foglia di Tè  
Teal

composizione: 45% cotone, 15% lana, 13% acetato, 19% viscosa, 8% nylon  
 composition: 45% cotton, 15% wool, 13% acetate, 19% viscose, 8% nylon  
 durabilità | durability: 60.000 martindale  
 peso | weight: 950 gr/m<sup>2</sup>  
 solidità' del colore alla luce | color fastness to light: 5  
 pilling | pilling: 4  
 ignifugo | fireproof: BS 5852-1, TB 117:2013



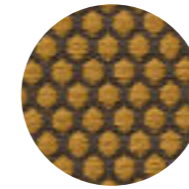
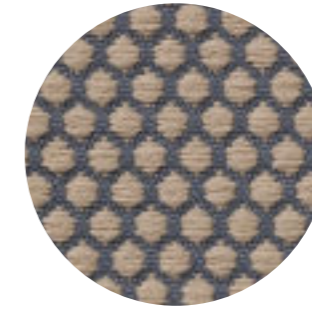
BRIONNE



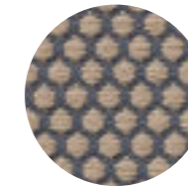
385.040

composizione: 18% Cotone, 31% Poliestere, 26% Lana, 22% Acrilico, 3% Poliammide  
 composition: 18% Cotton, 31% Polyester, 26% Wool, 22% Acrylic, 3% Polyamide  
 durabilità | durability: 40.000 martindale  
 peso | weight: 529 gr/m<sup>2</sup>  
 ignifugo | fireproof: no

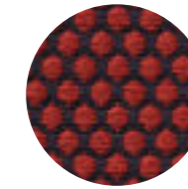
VESCOM ROLLA



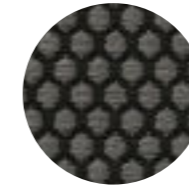
Mostarda  
Mustard



Latte  
Steamed Milk



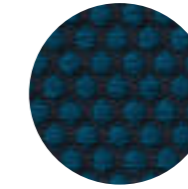
Ciliegia  
Cherry



Crafite  
Graphite



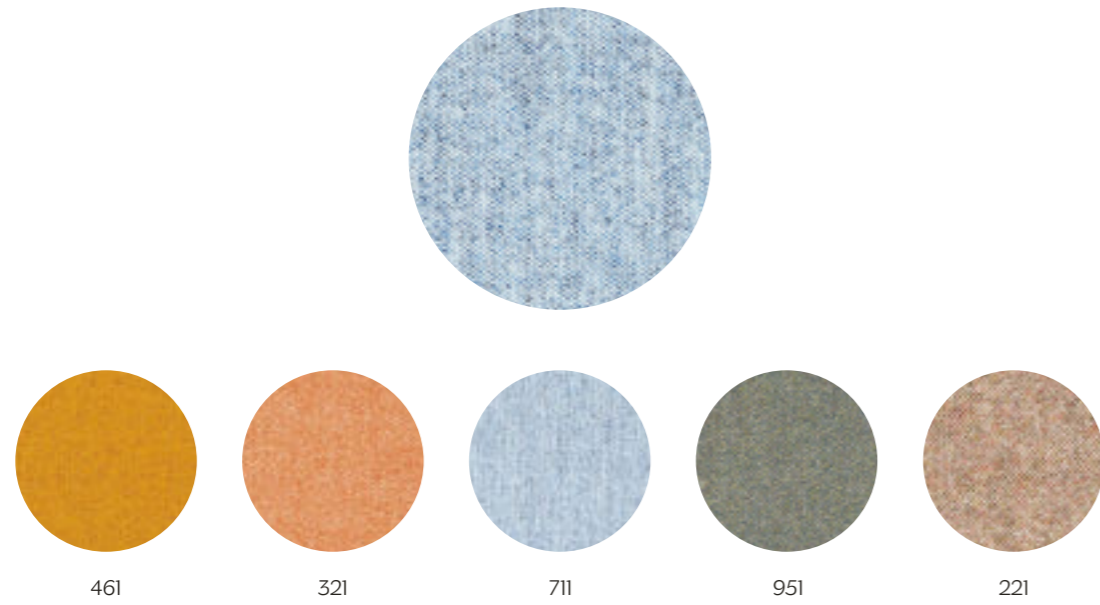
Blu Notte  
Midnight Blue



Blu Pavone  
Peacock

composizione: 100% Poliestere  
 composition: 100% Polyester  
 durabilità | durability: 50.000 martindale  
 peso | weight: 775 gr/m<sup>2</sup>  
 ignifugo | fireproof: Ignifugo BS 5852 part 1, BS 5852 Crib 5  
 EN 1021-1/2, Classe IIM

### KVADRAT - MELANGE NAP



461

321

711

951

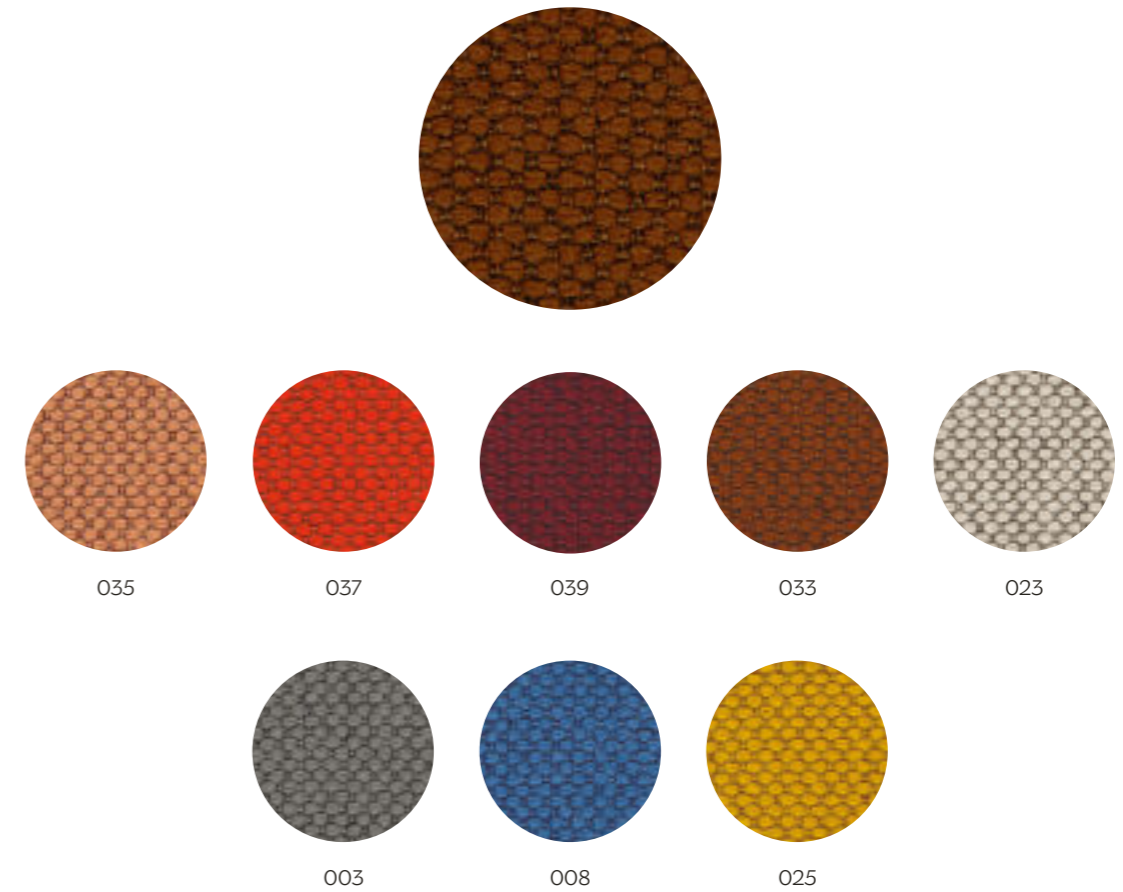
221

composizione | composition: 97% new wool, 3% nylon  
 durabilità | durability: 60.000 Martindale  
 peso | weight: 440 gr/m<sup>2</sup>  
 solidità del colore alla luce | color fastness to light: 6  
 pilling | pilling: 3-4

ignifugo | fireproof: BS 5852 CRIB 5, BS 5852 part 1, EN 1021-1/2 classe IIM,  
 IMO FTP code 2010: part 8, NF D 60 013, UNI 9175 IIM, US cal. bull. 117-2013

certificazione | certification: EU Ecolabel Certificate, Greenguard Gold,  
 Martindale, Lightfastness, Pilling, Sound Absorption and Airflow,  
 Environmental Product Declaration

### KVADRAT - MAHARAM MERIT



035

037

039

033

023

003

008

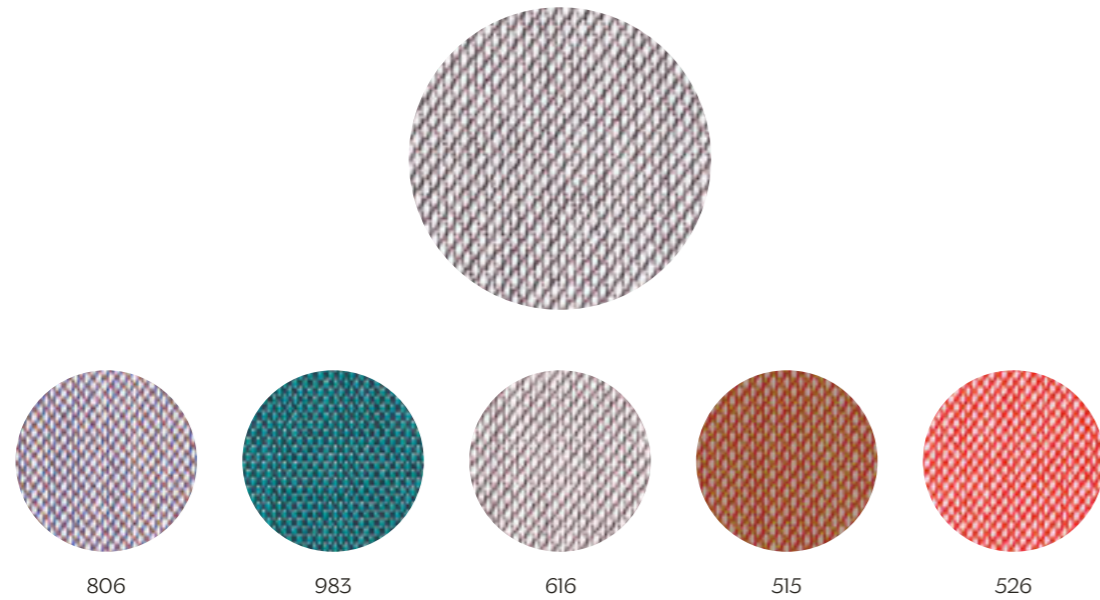
025

composizione: 76% poliestere riciclato, 24% poliestere  
 composition: 76% recycled polyester, 24% polyester  
 durabilità | durability: 85.000 martindale  
 peso | weight: 500 gr/m<sup>2</sup>  
 solidità del colore alla luce | color fastness to light: 6-7 (ISO 1-8)  
 restringimento | shrinkage: 2%  
 pilling | pilling: 4

ignifugo | fireproof: BS 5852 CRIB 5, BS 5852 part 1, EN 1021-1/2, US cal. bull. 117-2013

certificazione | certification: Greenguard, Martindale, Pilling

**KVADRAT - STEELCUT TRIO 3**



806

983

616

515

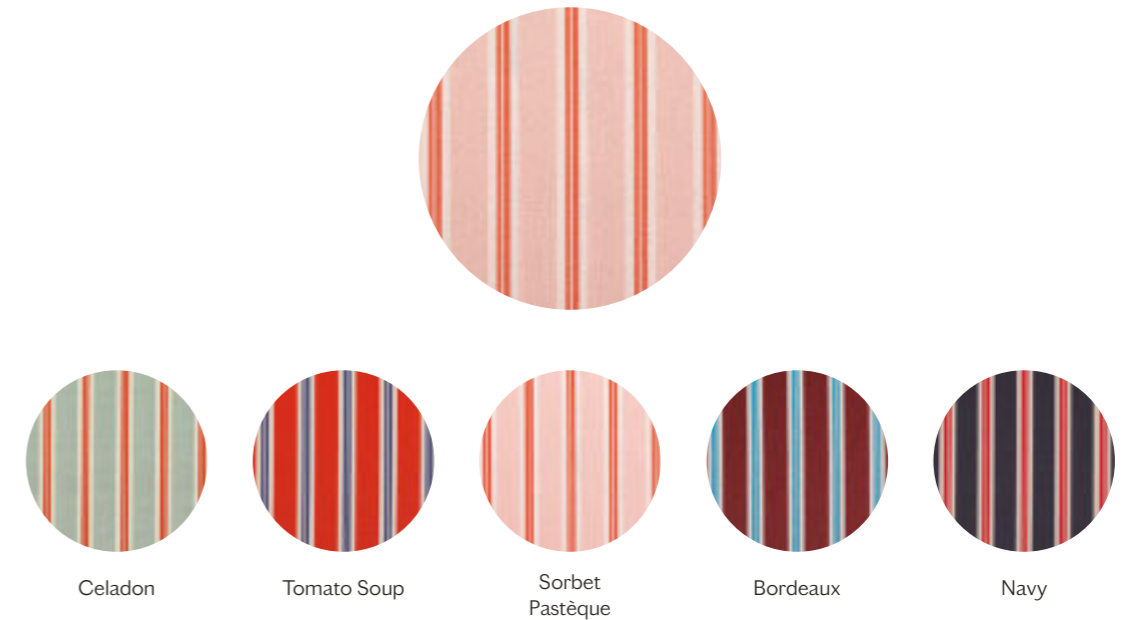
526

composizione: 100% lana, 10% nylon | composition: 90% new wool, 10% nylon  
 durabilità | durability: 100.000 martindale  
 peso | weight: 770 gr/m<sup>2</sup>  
 solidità del colore alla luce | color fastness to light: 5-7  
 pilling | pilling: 4

ignifugo | fireproof: AS/NZS 1530.3, AS/NZS 3837 class 2, BS 5852 CRIB5, BS 5852 part 1, DIN 4102 B2, EN 1021-1/2, IMO FTP code 2010:part 8, NF D 60 013, NFPA 260, önorm B1/Q1, SN 198 898 5.3, UNI 9175 IIM, US cal. bull 117-2013

certificazione | certification: EU Ecolabel Certificate, Greenguard Gold, Martindale, Lightfastness, Pilling, Wool, Sound Absorption and Airflow, Seam Slippage, Environmental Product Declaration

**DEDAR - ALUMNUS**



Celadon

Tomato Soup

Sorbet  
Pastèque

Bordeaux

Navy

composizione: 100% fibre di poliestere TREVIRA CS  
 composition: 100% polyester fibres TREVIRA CS  
 peso | weight: 532 g  
 ignifugo | fireproof: class IIM

## ESEDRA TRICOT



composizione: 80% fibre di poliestere (ritardante di fiamma), 20% poliammide  
 composition: 80% polyester fibres (flamed retardant), 20% polyamide  
 durabilità | durability: 60.000 martindale  
 peso | weight: 870 gr/m<sup>2</sup>  
 solidità del colore alla luce | color fastness to light: 4  
 pilling | pilling: 4  
 ignifugo | fireproof: EN 1021 part. 1-2, UNI 9175: class IIM  
 note: elasticità, idrorepellente su richiesta | note: elasticity,  
 water-repellent on request

## CUOIO | LEATHER



Le tonalità delle finiture sono fedeli alla realtà. Per una corretta visualizzazione però, è opportuno avere un monitor calibrato correttamente.

La guida Cura e Manutenzione è disponibile su [miniforms.com/download/archive](https://miniforms.com/download/archive)

All the colours and the finishes are faithful to reality. However, you require an accurately calibrated monitor for a correct visualization.

Care and Maintenance guide is available at [miniforms.com/download/archive](https://miniforms.com/download/archive)