

Farben und Oberflächen Colours and surfaces 2020



Basisfarben / Basic colours

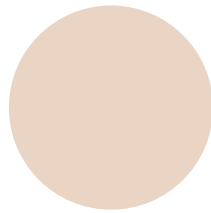
Lack matt / *Lack Hochglanz
Paint matt / *Paint high-gloss



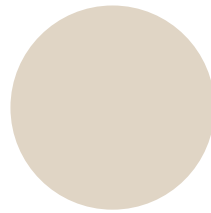
.54 .108*
schneeweiss
snow white



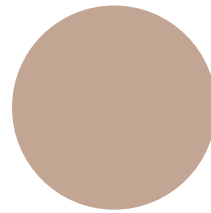
.27 .192*
grau-weiss
grey white



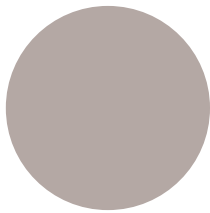
.58
vanille
vanilla



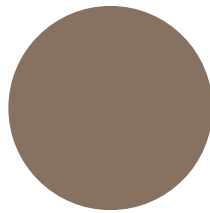
.39 .111*
elfenbein
ivory



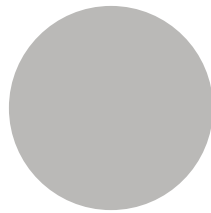
.28 .189*
rosenholz
rosewood



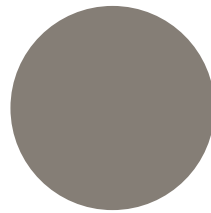
.59 .121*
kieselstein
pebble



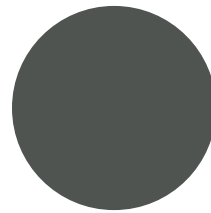
.49 .110*
kakao
cacao



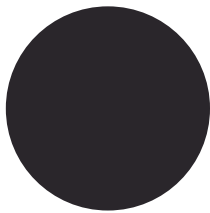
.60 .122*
steingrau
stone grey



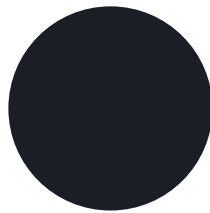
.44 .109*
zement
cement



.66 .105*
granit
granite



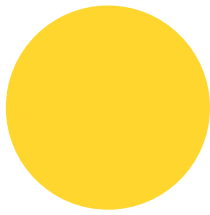
.37 .103*
schiefer-schwarz
slate black



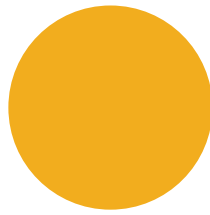
.46 .100*
schwarz
black

Akzentfarben / Accent colours

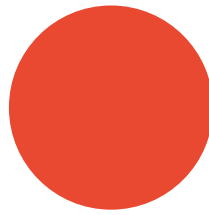
Lack matt / *Lack Hochglanz
Paint matt / *Paint high-gloss



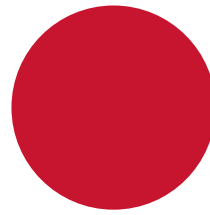
.69
zitrusgelb
citrus yellow



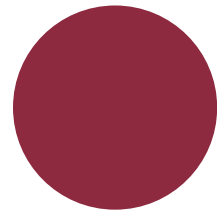
.35
indisch gelb
indian yellow



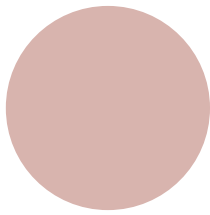
.32 .191*
koralle
coral



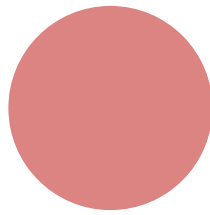
.47 .114*
tomatenrot
tomato red



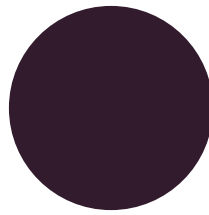
.40 .106*
weinrot
wine red



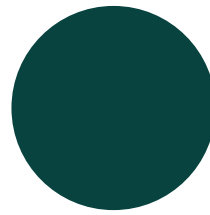
.70 .164*
altrosa
dusky rose



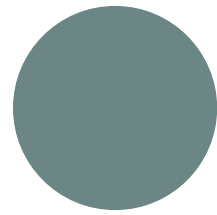
.38
flamingo pink
flamingo pink



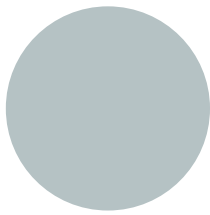
.43 .113*
brombeere
blackberry



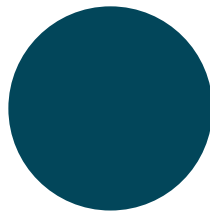
.42 .154*
smaragdgrün
emerald green



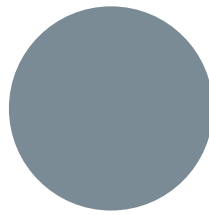
.53
salbei
sage



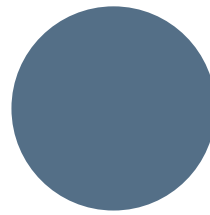
.30
jade
jade



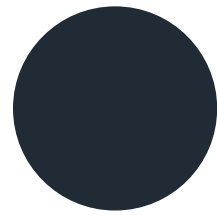
.62
ozean
ocean



.61
eisblau
ice blue



.68 .194*
stahlblau
steel blue



.51 .165*
nachtblau
night blue

Holzoberflächen / Wood finishes



.01
Nussbaum matt **
matt walnut **



.04
Ulme natur geölt
oiled natural elm



.10
Eiche wengefarbig
matt **
matt wenge-coloured
oak **



.11
Eiche gebleicht
matt **
matt bleached
oak **



.12
Eiche natur geölt
oiled natural oak



.14
Eiche granit matt **
matt granite oak **



.16
Nussbaum natur geölt
oiled natural walnut



.19
Esche schwarz
matt **
matt ash black **



.21
Esche schneeweiss
matt **
matt ash snow
white **



.200
Ahorn gebleicht
matt **
matt bleached
maple**



.770
Eiche matt**
matt oak**

* Diese Oberflächen befinden sich in unserer Musterbox. Für alle anderen Oberflächen können wir leider keine Muster zur Verfügung stellen.

* These finishes are in our samples box. We regret that we are unable to supply samples of other finishes.

** Matte Oberflächen sind klar lackiert.
** Matt finishes are clear lacquered.

Glas / Glass



.92
Flachglas
Sheet glass
clear



.102
Flachglas
Sheet glass
smoke



.700
gold ruby



.701
dark violet



.760
clear



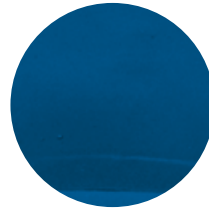
.761
smoke



.763
amber



.788
sunset yellow



.789
brilliant blue



.790
pink shades



.791
water green

Marmor / Marble



.702
Rosa Portogallo



.703
Verde Guatemala



.751
Bianco Carrara



.752
Nero Marquina

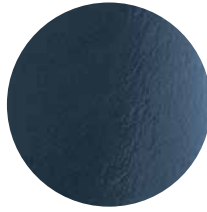
Keramikglasur / Ceramic glaze



.201
poppy



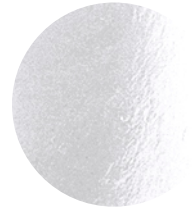
.202
sun



.203
sky



.204
charcoal



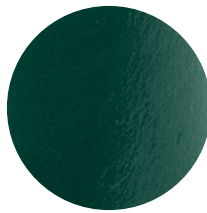
.205
cloud



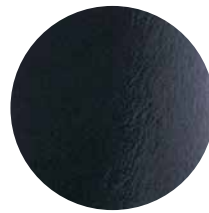
.209
wine



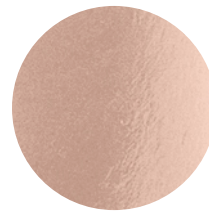
.210
carnation



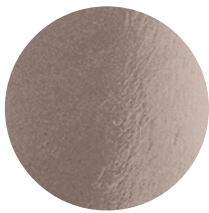
.211
jewel



.213
midnight



.214
skin



.215
pebble

Keramikfliese / Ceramic tile



.230
ivory black



.231
marinière



.232
sandy bay



.233
sea mist



.234
desert sun



.235
black stone

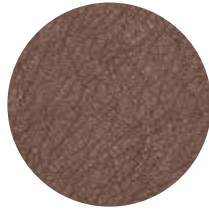


.236
white stone

Leder / Leather · PG L*



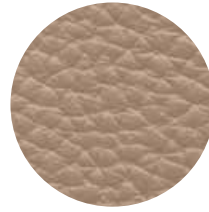
.130
black



.131
brown



.133
ivory



.137
nougat



.775
grey

Echtleider · Real Leather
Pigmentiertes, durchgefärbtes Rindsleder
Pigmented, dyed cowhide leather
Europäische Herkunft · European origin
Ausschliesslich Pflegeprodukte für Leder verwenden
Only use care products for leather

* Diese Oberflächen befinden sich in unserer Musterbox.
Für alle anderen Oberflächen können wir leider keine Muster
zur Verfügung stellen.

* These finishes are in our samples box.
We regret that we are unable to supply samples of other finishes.

Kernleder / Bend leather · PG KL*



.792
black



.793
warm grey



.794
earth

Echtleider · Real Leather
Pigmentiertes, durchgefärbtes Rindsleder
Pigmented, dyed cowhide leather
Europäische Herkunft · European origin
Ausschliesslich Pflegeprodukte für Leder verwenden
Only use care products for leather

* Diese Oberflächen befinden sich in unserer Musterbox.
Für alle anderen Oberflächen können wir leider keine Muster
zur Verfügung stellen.

* These finishes are in our samples box.
We regret that we are unable to supply samples of other finishes.

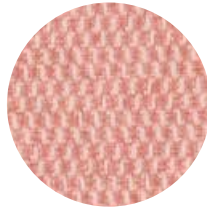
Stoffe / Fabrics · PG S0



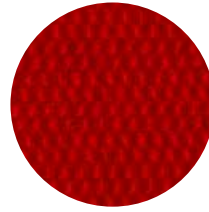
.216
green moss
Kvadrat
Messenger 087



.217
space blue
Kvadrat
Messenger 086



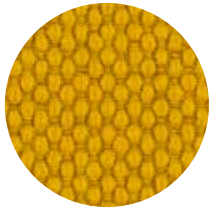
.218
skin
Kvadrat
Messenger 097



.219
chili
Kvadrat
Messenger 025



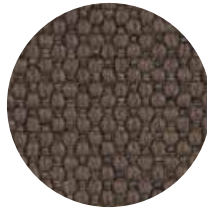
.220
peacock
Kvadrat
Merit 015



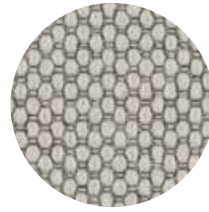
.221
amber
Kvadrat
Merit 025



.222
dark purple
Kvadrat
Merit 040



.223
smoke
Kvadrat
Merit 041



.224
arctic
Kvadrat
Merit 023



.225
basalt
Kvadrat
Merit 004

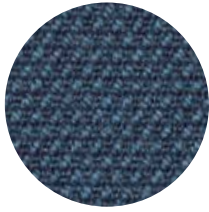
Messenger 5 · kvadrat
78% Recycled material · 15% Polyester · 7% Nylon
Manufactured in USA



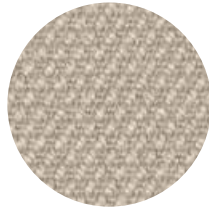
Merit · kvadrat
76% Recycled material · 24% Polyester
Manufactured in USA



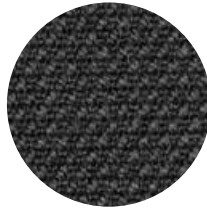
Stoffe / Fabrics · PG S1



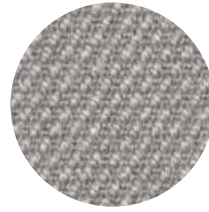
.717
steel blue
Kvadrat
Steelcut 780



.720
powder
Kvadrat
Steelcut 240



.722
granite
Kvadrat
Steelcut 180

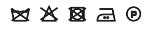


.773
stone grey
Kvadrat
Steelcut 155

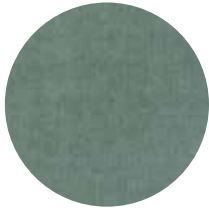


.774
black
Kvadrat
Steelcut 190

Steelcut 2 · kvadrat
90% New wool · 10% Nylon
Manufactured in Great Britain



Stoffe / Fabrics · PG S2



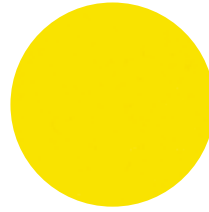
.186
jade
Kvadrat
Harald 823



.187
fuchsia pink
Kvadrat
Harald 612



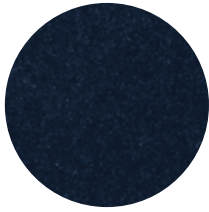
.188
opal green
Kvadrat
Harald 982



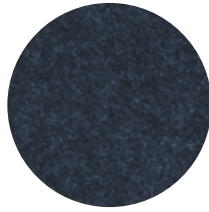
.739
citrus yellow
Kvadrat
Harald 432



.745
burgundy
Kvadrat
Harald 582



.746
night blue
Kvadrat
Harald 792



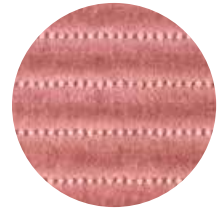
.747
smoke blue
Kvadrat
Harald 182



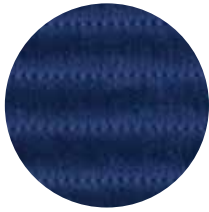
.748
asphalt
Kvadrat
Harald 242



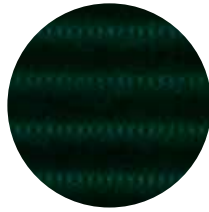
.749
sand
Kvadrat
Harald 212



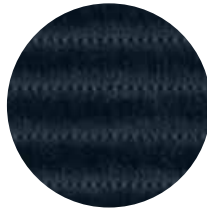
.226
pink clay
Kvadrat
Phlox 633



.227
imperial blue
Kvadrat
Phlox 763



.228
hunter green
Kvadrat
Phlox 983

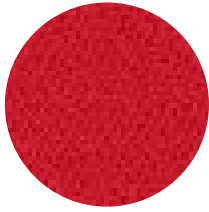


.229
urban grey
Kvadrat
Phlox 883

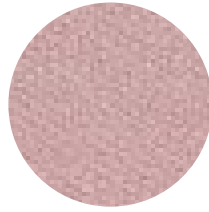
Harald 3 · kvadrat / Raf Simons
100% Cotton
Manufactured in Italy
☒ ☒ ☒ ☒ ©

Phlox · kvadrat / Raf Simons
90% Cotton · 10% Polyester
Manufactured in Italy
☒ ☒ ☒ ☒ ©

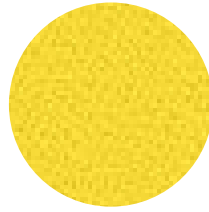
Stoffe / Fabrics · PG S3



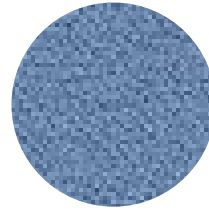
.726
atomic red
Kvadrat Vidar 653



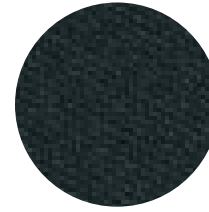
.727
blush
Kvadrat Vidar 633



.728
lemon
Kvadrat Vidar 443



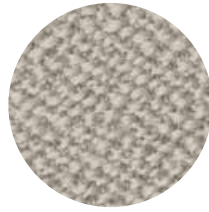
.729
bavarian sky
Kvadrat Vidar 733



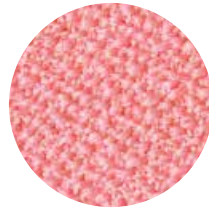
.730
forest green
Kvadrat Vidar 1062



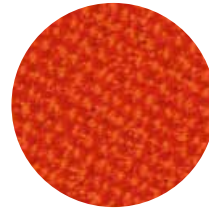
.753
cream
Kvadrat Vidar 1511



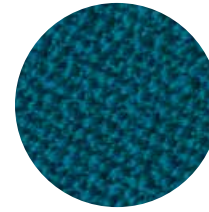
.754
pebble
Kvadrat Vidar 222



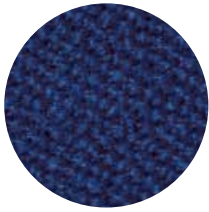
.755
rose
Kvadrat Vidar 622



.757
tangerine
Kvadrat Vidar 542



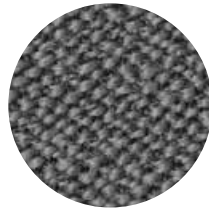
.758
petrol
Kvadrat Vidar 872



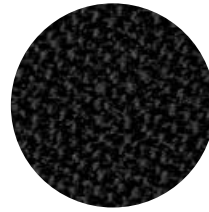
.759
royal blue
Kvadrat Vidar 772



.764
navy blue
Kvadrat Vidar 554

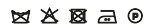


.768
cement
Kvadrat Vidar 152



.772
slate black
Kvadrat Vidar 1880

Vidar 3 · kvadrat / Raf Simons
94% New wool · 6% Nylon
Manufactured in Norway



Stoffe / Fabrics · PG S4



.731
black-grey
Kvadrat Sonar 194



.732
black-white
Kvadrat Sonar 173

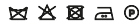


.733
blush-black
Kvadrat Sonar 684



.738
multi rosé
Kvadrat Sonar 633

Sonar 3 · kvadrat / Raf Simons
59% New wool · 25% Viscose · 9% Linen
5% Nylon · 2% Polyester
Manufactured in Norway



Schönbuch GmbH
Ottelmannshäuser Straße 1 · 9763 1 Bad Königshofen · Germany
Tel. +49.(0)9761.3962-0 · info@schoenbuch.com

www.schoenbuch.com