



CASAMANIA
HORM

Sedute, Tavoli e Tavolini

Awards



2008 / Stand Salone 2005
2004 / Ripples
1998 / Istruzioni di montaggio



2016 / Autoreggente
2011 / Bek
2008 / Tide

2001 / Sottiletto
1998 / Wow! Plus
1998 / Take

1994 / Tola



2014 / Autoreggente
2013 / Infinity
2011 / RememberMe

2008 / N7



2014 / Toshi
2013 / Lepel
2013 / Chariot



2016 / QuaDror™ 03



2012 / Maritime



2016 / Tout le Jour



2016 / Torii



2010 / Lieve
2007 / A/R



2016 / Torii
2015 / Autoreggente
2013 / Chariot
2011 / Sinapsi

2008 / Bek
2008 / A/R
2007 / Blend
2007 / Tide

2006 / Stand Salone 2005
2004 / Ripples
1999 / Sottiletto

Home & Contract

Gli opposti si attraggono. HORM e CASAMANIA hanno da sempre due anime distinte, intrise di pura passione per la ricerca, la qualità, il design. Questo Catalogo rappresenta l'inizio di un progetto: far dialogare questi pluridecennali campioni del Made in Italy, nel solco della loro identità. Horm è lo stile più rigoroso, formale, elegante, caratterizzato dal sapiente uso delle materie pure come il legno, la pietra, il marmo, il vetro. Casamania gioca da sempre con l'ironia, l'irriverenza formale, la voglia di rompere gli schemi nel segno della funzionalità e della ricerca. La prima è sempre stata e continuerà ad essere un'icona di stile e di raffinata eleganza in ambito HOME, la seconda un modello per il mercato CONTRACT. Tuttavia gli opposti si attraggono, si fondono e si moltiplicano, offrendo infinite soluzioni di stile, di utilizzo, di collocazione. Due identità che unite vogliono rompere le rigide barriere del mercato, ponendo al centro del progetto l'Uomo nelle sue molteplici attività: pensare, sedersi, riposare, mangiare, lavorare, studiare, giocare, dormire, amare, sognare, conversare. Horm e Casamania: Home & Contract.

Vol. 01
Sedute, Tavoli e Tavolini

Vol. 02
Contenitori, Mensole e Librerie

Vol. 03
Complementi, Illuminazione e Outdoor

Vol. 04
Letti, Divani Letto e Isole Figi

Vol. 05
Divani

Opposites attract. HORM and CASAMANIA have always had two different souls, imbued with a pure passion for research, quality and design. This catalogue represents the starting point of a new project: to make these historical champions of the Made in Italy production talk to each other, in the wake of their identity. Horm is the most rigorous, formal, elegant style, characterised by the skilful use of pure materials, such as wood, stone, marble and glass. Casamania has always played with irony, formal irreverence, the desire to break the mould in the name of functionality and research. The first has always been and will continue being an icon of style and refined elegance in the HOME, the second a model for the CONTRACT market. However, opposites attract, merge and multiply, offering infinite solutions of style, use and arrangement. Two identities that together want to break the rigid barriers of the market, placing People in its many activities at the heart of the project: thinking, sitting, resting, eating, working, studying, playing, sleeping, loving, dreaming, talking. Horm and Casamania: Home & Contract.

[Vol. 01](#)
Chairs, Tables, and Low Tables

[Vol. 02](#)
Storage and Shelving Solutions

[Vol. 03](#)
Furnishing Accessories,
Lighting, and Outdoor

[Vol. 04](#)
Beds, Sofa Beds, and Figi Islands

[Vol. 05](#)
Sofas and Armchairs

Les opposés s'attirent. HORM et CASAMANIA ont toujours eu deux âmes distinctes, imprégnées d'une pure passion pour la recherche, la qualité et le design. Ce catalogue représente le début d'un projet: faire dialoguer ces pluridécennales champions du Made in Italy, dans la lignée de leur identité. Horm représente un style plus rigoureux, formel, élégant, caractérisé par une utilisation habile des matériaux purs comme le bois, la pierre, le marbre et le verre. Casamania a toujours joué avec l'ironie, l'irrévérence formelle, le désir de briser les schémas sous le signe de la fonctionnalité et de la recherche. La première a toujours été et continuera à être une icône de style et d'élégance raffinée dans le domaine HOME, la seconde est un modèle pour le marché CONTRACT. Cependant, les opposés s'attirent, fusionnent et se multiplient, en offrant des solutions infinies de style, d'utilisation et d'emplacement. Deux identités qui, ensemble, veulent briser les rigides barrières du marché, en plaçant l'Homme dans ses nombreuses activités au centre du projet: penser, s'asseoir, se reposer, manger, travailler, étudier, jouer, dormir, aimer, rêver, converser. Horm et Casamania: Home & Contract.

[Vol. 01](#)
Chaises, Tables et Tables Basses

[Vol. 02](#)
Meubles de rangement, Etagères et Bibliothèques

[Vol. 03](#)
Compléments d'ameublement,
Luminaire et Outdoor

[Vol. 04](#)
Lits, Canapés-lits et Îles Figi

[Vol. 05](#)
Canapés et Fauteuils

Gegensätze ziehen sich an. HORM und CASAMANIA hatten schon immer zwei verschiedene Seelen, durchdrungen von einer reinen Leidenschaft für Forschung, Qualität und Design. Dieser Katalog stellt den Beginn eines Projekts dar: diese jahrzehntelangen Meister des Made in Italy im Zuge ihrer Identität miteinander in Dialog zu bringen. Horm ist der rigoroseste, formalste und eleganteste Stil, der sich durch den geschickten Einsatz von reinen Materialien wie Holz, Stein, Marmor und Glas auszeichnet. Casamania setzte schon immer auf Ironie, formale Respektlosigkeit und den Wunsch, diese Klischees im Namen der Funktionalität und Forschung durchzubrechen. Die erste war und ist eine Ikone des Stils und der raffinierten Eleganz im Bereich HOME, die zweite ein Modell für den CONTRACT-Markt. Gegensätze ziehen sich jedoch an, verschmelzen und multiplizieren sich und bieten unendliche Lösungen für Stil, Nutzung und Anordnung. Zwei Identitäten, die gemeinsam die starren Barrieren des Marktes überwinden wollen, indem sie den Menschen in den Mittelpunkt des Projekts stellen: Denken, Sitzen, Ausruhen, Essen, Arbeiten, Studieren, Spielen, Schlafen, Lieben, Träumen, Sprechen. Horm und Casamania: Home & Contract.

[Vol. 01](#)
Stühle, Tische, Couch- und Beistelltische

[Vol. 02](#)
Sideboards, Wandregale und Bücherregale

[Vol. 03](#)
Kleinformöbel, Accessoires,
Lampen und Outdoor

[Vol. 04](#)
Betten, Bettsofas und Figi-Inseln

[Vol. 05](#)
Sofas und Sessel

Los opuestos se atraen. HORM y CASAMANIA siempre han tenido dos almas distintas, imbuidas de pura pasión por la investigación, la calidad y el diseño. Este catálogo representa el comienzo de un proyecto: un diálogo entre estos campeones del Made in Italy, partiendo de la identidad de cada uno de ellos. Horm es el estilo más riguroso, formal y elegante, caracterizado por un uso hábil de materiales puros como la madera, la piedra, el mármol y el vidrio. Casamania siempre ha jugado con la ironía, la irreverencia formal, el deseo de romper moldes en aras de la funcionalidad y la investigación. La primera ha sido siempre y lo seguirá siendo un icono de estilo y refinada elegancia en el ámbito HOME, la segunda es un referente del mercado CONTRACT. Sin embargo, los opuestos se atraen, se fusionan y se multiplican, aportando infinitas soluciones de estilo, uso y ubicación. Dos identidades que quieren romper juntas las rígidas barreras del mercado, colocando en el centro del proyecto al Ser Humano en sus múltiples actividades: pensar, sentarse, descansar, comer, trabajar, estudiar, jugar, dormir, amar, soñar, conversar. Horm y Casamania: Home & Contract.

[Vol. 01](#)
Sillas, Mesas y Mesitas

[Vol. 02](#)
Aparadores, Estanterías y Librerías

[Vol. 03](#)
Complementos de decoración,
Iluminación y Outdoor

[Vol. 04](#)
Camas, Sofás Cama e Islas Figi

[Vol. 05](#)
Sofás y Sillones

Designers



Baldanzi
& Novelli



Claudio
Bellini



Mario
Bellini



Patrizia
Bertolini



Mario
Botta



Burtcher
& Bertolini



Enrico
Cesana



Claesson
Koivisto
Rune



Carlo
Cumini



Maarten
De Ceulaer



Joe
Doucet



Dror



D'Urbino
Lomazzi



Sebastian
Errazuriz



Fabrica



GamFratesi



Daniele
Gaspardo



Jean Francois
Gornée



Grafite
Design



Harry
& Camila



Steven
Holl



Benjamin
Hubert



Giulio
Iacchetti



Salvatore
Indriolo



Toyo
Ito



Tobias
Jurczek



LucidiPevere



Giulio
Manzoni



Ilaria
Marelli



Menguzzato
& Nascimben



Neuland,
Paster &
Geldmacher



Luca
Nichetto



Fabio
Novembre



Orlandini
Design



Josh
Owen



Palomba
Serafini
Associati



Pastorino
& Suarez



Jake
Phipps



Marcello
Pozzi



Meneghello
Paoletti
Associati



Pudelskern



Karim
Rashid



Carlo
Stefanut



Stokkeastad



Studio 63



Studio
Balutto



Studio
Habits



Marta
Szymkowiak



Marc
Thorpe



Matteo Thun
& Antonio
Rodriguez



Esa
Vesmanen



Samuel
Wilkinson



Wis
Design



Sean
Yoo



Renato
Zamberlan



StH
Orizzonti
Design
Center

204»214	Albino Family	062	Maritime <i>Legno</i>	206, 208	Torii
216, 218	Albino Torcia	128, 220»224	Meduse Tavolino	202»206, 240	Tout le Jour Lounge
142»146	Alieno	104, 132, 134	Meduse Tavolo	016, 020	Tout le Jour Sedia
142, 144	Alieno High	036	Milady	202	Tout le Jour Tavolino
140, 236	Alieno Peacock	250, 252	Morfino & Morfino Pouf	038	Tribeca
198, 200	Autoreggente Tavolino	252	Morfino Kids	022, 024	Tutu
068, 070	Autoreggente Tavolo	060	Pablita	230, 232	Twine Tavolino
172, 174	Bar	248	Pollon	224	Urban
028»032	Barbara	156, 180	Pressious	009	Vad Girevole <i>Cuoietta</i>
124, 154»158	Bek	240	QuaDror™ 01	106, 108	Vad Girevole <i>Imbottita</i>
126, 194	Bifronte	016»018, 076	QuaDror™ 02	009	Vad Girevole <i>Polipropilene</i>
094	Bolero	044»048	QuaDror™ 03	106	Vad Impilabile <i>Cuoietta</i>
100	Bolero Bistrot	126, 128	Raphia <i>Alluminio</i>	110	Vad Impilabile <i>Imbottita</i>
096»100	Bolero Estensibile	130, 132	Raphia <i>Rattan</i>	110	Vad Impilabile <i>Polipropilene</i>
074	Bureau	126	Raphia <i>Rocking</i>	108	Vad Wood <i>Cuoietta</i>
064, 066	Capriata	018, 070»078	Ray Poltroncina	106	Vad Wood <i>Imbottita</i>
220	Carnaby	072»074, 100	Ray Sedia	098»104	Vad Wood <i>Polipropilene</i>
226, 228	Chariot	162,	RememberMe Bistrot	032, 034	Velasca
166	Charlotte	160,	RememberMe Sedia	090	Wow! Plus
084»094	Cherish	052»058	Riddled Tavolo		
254	Cherish Kids	184, 186	Ripples		
232, 234	Elfo	190	Ripples — Like a River		
038»042	Flower	188	Ripples Outdoor		
068	Ginevra	058, 182, 192	Ripples Sgabello		
242»246	Giro Pouf	192	Ripples Tavolo		
246,	Giro Tavolino	210	Sienna		
140, 234»238	Hexagon	168, 170	Sin		
024»028	Him & Her <i>Lucida</i>	198, 200	Soho		
148, 150	Him & Her <i>Opaca</i>	118	Stereo Impilabile <i>Imbottita</i>		
196	Io & Te	116, 122	Stereo Impilabile <i>Polipropilene</i>		
122	J — Table	118	Stereo Metal <i>Imbottita</i>		
176	Kant	134, 152, 162	Stereo Metal <i>Polipropilene</i>		
178	Kant Liff	096, 118»120	Stereo Wood <i>Imbottita</i>		
042»046	Ki	074, 082, 112	Stereo Wood <i>Polipropilene</i>		
164	La Dina	152	T1 Indoor	257	Finiture e materiali
050	Lepel Poltroncina	146»154	T1 Outdoor		Finishes and materials
050, 056	Lepel Sedia	156	T2	268	Legenda dei simboli
242, 244	Lily	158, 232	T4		Key to symbols
136, 138	Lobby	078»082, 116	Tango	267	Schede tecniche
086, 088	Ma.Re	084	Tango Bistrot		Technical sheets
062, 064	Maritime <i>Imbottita</i>	080	Tango Estensibile		

Sedie
Chairs
Chaises
Stühle
Sillas



Alieno
142, 146



Alieno High
142, 144



Cherish
084, 086, 090, 092, 094



Him & Her *Lucida*
024, 026, 028



Him & Her *Opaca*
148, 150



Ki
042, 044, 046



La Dina
164



Lepel Sedia
050, 056



Milady
036



Pablita
060



Ray Sedia
072, 074, 100



RememberMe Sedia
160



Sin
168, 170



Stereo Impilabile *Imbottita*
118



Stereo Impilabile *Polipropilene*
116, 122



Stereo Metal *Imbottita*
118



Stereo Metal *Polipropilene*
114, 134, 152, 162



Stereo Wood *Imbottita*
096, 118, 120



Stereo Wood *Polipropilene*
074, 082, 112



Tout le Jour *Sedia*
016, 020



Tribeca
038

Sedie con braccioli e poltroncine
Chairs with armrests and easy chairs
Chaises avec accoudoirs et petit fauteuil
Stühle mit Armlehnen und kleine Sessel
Sillas con brazos y sillones pequeños



Charlotte
166



Ginevra
068



Lepel *Poltroncina*
050



Lobby
136, 138



Maritime *Imbottita*
062, 064



Maritime *Legno*
062



Raphia *Alluminio*
126, 128



Raphia *Rattan*
130, 132



Ray *Poltroncina*
018, 070, 076, 078



Vad Girevole *Cuoietto*



Vad Girevole *Imbottita*
106, 108



Vad Girevole *Polipropilene*



Vad Impilabile *Cuoietto*
106



Vad Impilabile *Imbottita*
110



Vad Impilabile *Polipropilene*
110



Vad Wood *Cuoietto*
108



Vad Wood *Imbottita*
106



Vad Wood *Polipropilene*
098, 102, 104



Velasca
032, 034

Sedie a dondolo
Rocking chairs
Chaises à bascule
Schaukelstühle
Sillas mecedoras



Raphia Rocking
126

Sedie pieghevoli
Folding chairs
Chaises pliantes
Klappstühle
Sillas plegables



Bek
124, 154, 158

Sedie per bambini
Children's chairs
Chaises pour enfants
Kinderstühle
Sillas para niños



Cherish Kids
254



Morfino Kids
252

Lounge
Lounge chairs
Lounge
Loungesessel
Sillones lounge



Alieno Peacock
140, 236



Tout le Jour Lounge
202, 204, 206, 240

Panche
Benches
Bancs
Sitzbänke
Bancos



Ripples
184, 186



Ripples — Like a River
190



Ripples Outdoor
188



Urban
224

Sgabelli
Stools
Tabourets
Hocker
Taburetes



Bar
172, 174



Hexagon
018, 234, 236, 238



Kant
176



Kant Lift
178



Pressious
156, 180



Ripples Sgabello
058, 182, 192

Poltrone
Armchairs
Fauteuils
Sessel
Sillones



Carnaby
220



Sienna
210



Soho
198, 200



Elfo
232, 234



Morfino & Morfino Pouf
250, 252



Giro Pouf
242, 244, 246



Pollon
248

Tavoli
Tables
Tables
Tische
Mesas



Autoreggente Tavolo
068, 070



Barbara
028, 030, 032



Bolero
094



Meduse Tavolo
104, 114, 132, 134



QuaDror™ 02
016, 018, 076



QuaDror™ 03
044, 046, 048



Riddled Tavolo
052, 054, 056, 058



Ripples Tavolo
192



Tango
078, 082, 116



Tutù
022, 024

Tavolini da bistrot
Cafe bar tables
Tables bistrot
Bistrotische
Mesitas de bistrot



Bolero Bistrot
100



RememberMe Bistrot
162



Tango Bistrot
084



T1 Indoor
152



T1 Outdoor
146, 148, 152, 154



T2
156



T4
158, 232

Tavoli estensibili
Extendable tables
Tables à rallonge
Ausziehtische
Mesas extensibles



Bolero Estensibile
096, 098, 100



Capriata
064, 066



Flower
038, 040, 042



Ma.Re
086, 088



Tango Estensibile
080



Wow! Plus
090



Bureau
074



J-Table
122

Scrivani e scrivanie
Desks
Secrétaires et bureaux
Sekretäre und Schreibtische
Escritorios

Tavolini
Coffee and side tables
Petites tables
Couch- und Beistelltische
Mesitas



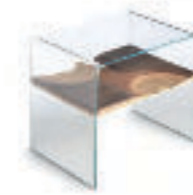
Albino Family
204, 210, 212, 214



Albino Torcia
216, 218



Autoreggente Tavolino
198, 200



Bifronte
126, 194



Chariot
226, 228



Giro Tavolino
246



Hexagon
018, 140, 234, 236, 238



Io & Te
196



Lily
242, 244



Meduse Tavolino
128, 220, 222, 224



QuaDror™ 01
240



Torii
206, 208



Tout le Jour Tavolino
202



Twine Tavolino
230, 232

Sedute, Tavoli e Tavolini
Chairs, Tables, and Low Tables
Chaises, Tables et Tables Basses
Stühle, Tische, Couch- und Beistelltische
Sillas, Mesas y Mesitas

QuaDror™ 02

tavolo / table
HORM / Dror, 2015
» [technical info p. 305](#)

Tout le Jour Sedia

sedia / chair
HORM / Marc Thorpe, 2016
» [technical info p. 325](#)



QuaDror™ 02

tavolo / table
HORM / Dror, 2015
» [technical info p. 305](#)

Ray Poltroncina

sedia con braccioli / chair with armrests
HORM / Orlandini Design, 2014
» [technical info p. 307](#)

Hexagon

sgabello o tavolino / stool or side table
HORM / Steven Holl, 2011
» [technical info p. 291](#)

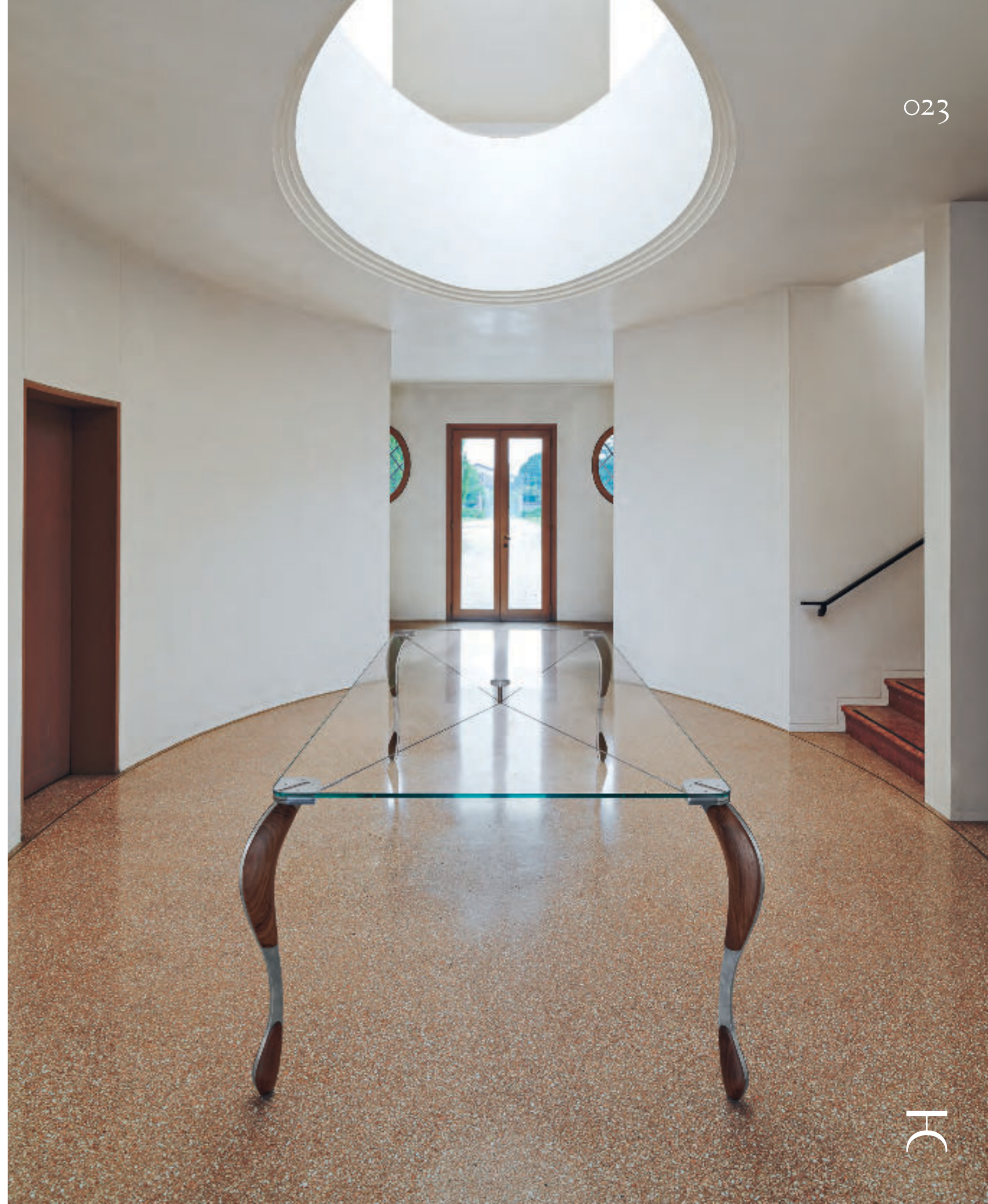
Tout le Jour Sedia

sedia / chair
HORM / Marc Thorpe, 2016
» [technical info p. 325](#)



Tutù

tavolo / table
HORM / Renato Zamberlan, 2017
» [technical info p. 327](#)





Tutù

tavolo / table
HORM / Renato Zamberlan, 2017
» [technical info p. 327](#)

Him & Her *Lucida*

sedia / chair
CASAMANIA / Fabio Novembre, 2008
» [technical info p. 292](#)

Him & Her *Lucida*

sedia / chair

CASAMANIA / Fabio Novembre, 2008

» [technical info p. 292](#)



Barbara

tavolo / table
HORM / Renato Zamberlan, 2018
» [technical info p. 278](#)

Him & Her *Lucida*

sedia / chair
CASAMANIA / Fabio Novembre, 2008
» [technical info p. 292](#)



Barbara

tavolo / table
 HORM / Renato Zamberlan, 2018
 » [technical info p. 278](#)



Barbara + Lazy Susan

tavolo / table
 HORM / Renato Zamberlan, 2018
 » [technical info p. 278](#)



Barbara

tavolo / table
HORM / Renato Zamberlan, 2018
» [technical info p. 278](#)



Velasca

sedia con braccioli / chair with armrests
HORM / Studio Balutto, 2016
» [technical info p. 334](#)



Velasca

sedia con braccioli / chair with armrests

HORM / Studio Balutto, 2016

» [technical info p. 334](#)





Milady

sedia / chair
HORM / Studio Balutto, 2016
» [technical info p. 302](#)



038

Tribeca

sedia / chair
HORM / Studio Balutto, 2016
» [technical info p. 326](#)



Flower

tavolo estensibile / extendable table
HORM / D'Urbino Lomazzi, 2017
» [technical info p. 289](#)



039

H

Flower

tavolo estensibile / extendable table
HORM / D'Urbino Lomazzi, 2017
» [technical info p. 289](#)



Ki

sedia / chair
 HORM / Mario Bellini, 2007
 » [technical info p. 296](#)



Flower

tavolo estensibile / extendable table
 HORM / D'Urbino Lomazzi, 2017
 » [technical info p. 289](#)



QuaDror™ 03

tavolo / table
HORM / Dror, 2015
» [technical info p. 305](#)

Ki

sedia / chair
HORM / Mario Bellini, 2007
» [technical info p. 296](#)

046

Ki

sedia / chair
HORM / Mario Bellini, 2007
» [technical info p. 296](#)

QuaDror™ 03

tavolo / table
HORM / Dror, 2015
» [technical info p. 305](#)



047



HC

QuaDror™ 03

tavolo / table
HORM / Dror, 2015
» technical info p. 305



Lepel Poltroncina

sedia con braccioli / chair with armrests
CASAMANIA / Luca Nichetto, 2012
» [technical info p. 297](#)



Lepel Sedia

sedia / chair
CASAMANIA / Luca Nichetto, 2012
» [technical info p. 297](#)



Riddled Tavolo

tavolo / table
HORM / Steven Holl, 2007
» [technical info p. 309](#)

Plywood Chandelier
lampada / lamp
vol. 03



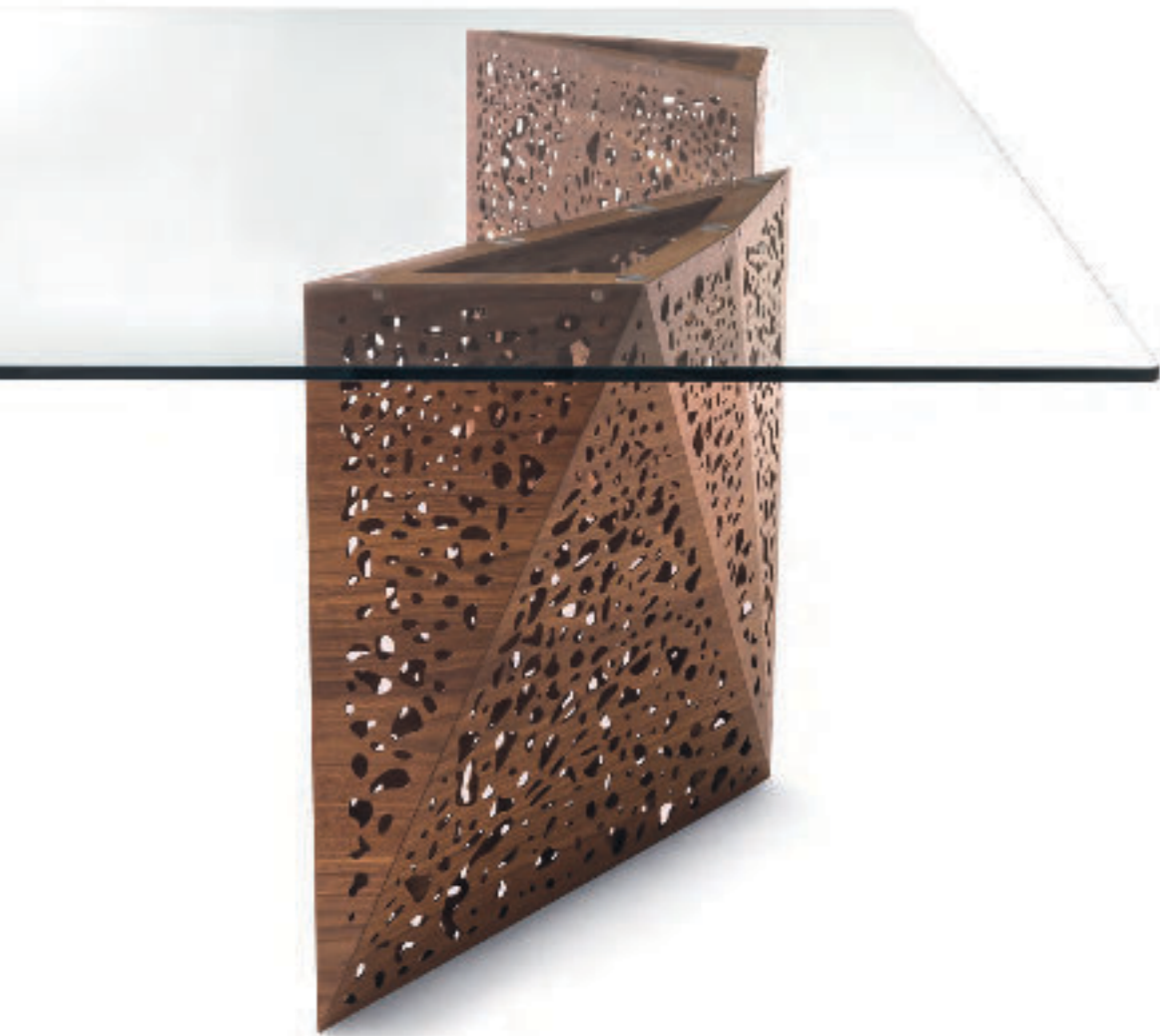
Riddled Tavolo

tavolo / table
HORM / Steven Holl, 2007
» technical info p. 309

056

Riddled Tavolo

tavolo / table
HORM / Steven Holl, 2007
» [technical info p. 309](#)



Lepel Sedia

sedia / chair
CASAMANIA / Luca Nichetto, 2012
» [technical info p. 297](#)



057

Riddled Tavolo

tavolo / table
HORM / Steven Holl, 2007
» [technical info p. 309](#)

Ripples Sgabello

sgabello / stool
HORM / SH – homage to Toyo Ito, 2008
» [technical info p. 311](#)



Pablita

sedia / chair
HORM / Marcello Pozzi, 2016
» [technical info p. 303](#)



Maritime *Legno*

sedia con braccioli / chair with armrests
 CASAMANIA / Benjamin Hubert, 2011 – 2012
 » [technical info p. 300](#)

Maritime *Imbottita*

sedia con braccioli / chair with armrests
 CASAMANIA / Benjamin Hubert, 2011 – 2012
 » [technical info p. 299](#)



Capriata

tavolo estensibile / extendable table
HORM / Carlo Cimini, 1997

» [technical info p. 283](#)

Maritime Imbottita

sedia con braccioli / chair with armrests
CASAMANIA / Benjamin Hubert, 2011 – 2012

» [technical info p. 299](#)



Capriata

tavolo estensibile / extendable table
HORM / Carlo Cumini, 1997
» [technical info p. 283](#)



Autoreggente Tavolo

tavolo / table
 HORM / Patrizia Bertolini, 2013
 » technical info p. 277

Ginevra

sedia con braccioli / chair with armrests
 HORM / Studio Balutto, 2016
 » technical info p. 290



Polka Dots
 madia / sideboard
 vol. 02

070

Ray Poltroncina

sedia con braccioli / chair with armrests
HORM / Orlandini Design, 2014
» [technical info p. 307](#)

Autoreggente Tavolo

tavolo / table
HORM / Patrizia Bertolini, 2013
» [technical info p. 277](#)



071



Carlos
madia / sideboard
vol. 02

HC

Ray Sedia

sedia / chair
HORM / Orlandini Design, 2010
» [technical info p. 308](#)



Ray Sedia

sedia / chair
HORM / Orlandini Design, 2010
» [technical info p. 308](#)



Stereo Wood Polipropilene

sedia / chair
CASAMANIA / Luca Nichetto, 2012
» [technical info p. 319](#)

Bureau

scrivania / writing desk
HORM / Esa Vesmanen, 2013
» [technical info p. 283](#)



076

Ray Poltroncina

sedia con braccioli / chair with armrests
HORM / Orlandini Design, 2014
» [technical info p. 307](#)



QuaDror™ 02

tavolo / table
HORM / Dror, 2015
» [technical info p. 305](#)



077

H

Ray Poltroncina

sedia con braccioli / chair with armrests
HORM / Orlandini Design, 2014
» [technical info p. 307](#)

Tango

tavolo / table
HORM / Renato Zamberlan & Joe Doucet, 2016
» [technical info p. 322](#)

Tango Estensibile

tavolo estensibile / extendable table

HORM / Renato Zamberlan & Joe Doucet, 2016

» [technical info p. 323](#)



Stereo Wood Polipropilene

sedia / chair
CASAMANIA / Luca Nichetto, 2012
» [technical info p. 319](#)

Tango

tavolo / table
HORM / Renato Zamberlan & Joe Doucet, 2016
» [technical info p. 322](#)



Cherish

sedia / chair
HORM / SH, 1994
» [technical info p. 287](#)

Tango Bistrot

tavolino da bistrot / cafe bar table
HORM / Renato Zamberlan & Joe Doucet, 2016
» [technical info p. 322](#)



Ma.Re

tavolo estensibile / extendable table
HORM / Marta Szymkowiak & Renato Zamberlan, 2015
» [technical info p. 299](#)



Cherish

sedia / chair
HORM / SH, 1994
» [technical info p. 287](#)



Ma.Re

tavolo estensibile / extendable table
HORM / Marta Szymkowiak & Renato Zamberlan, 2015
» [technical info p. 299](#)



Wow! Plus

tavolo estensibile / extendable table
 HORM / Grafite Design & STH, 2005
 » [technical info p. 335](#)



Cherish

sedia / chair
 HORM / STH, 1994
 » [technical info p. 287](#)



Cherish

sedia / chair
HORM / SH, 1994
» technical info p. 287



Leon Full Color
madia / sideboard
vol. 02

Cherish

sedia / chair
HORM / SH, 1994
» [technical info p. 287](#)



Bolero
tavolo / table
HORM / Renato Zamberlan, 2018
» [technical info p. 281](#)



Bolero Estensibile

tavolo estensibile / extendable table
HORM / Renato Zamberlan, 2018
» [technical info p. 282](#)



Stereo Wood *Imbottita*

sedia / chair
CASAMANIA / Luca Nichetto, 2012
» [technical info p. 318](#)



Bolero Estensibile

tavolo estensibile / extendable table
 HORM / Renato Zamberlan, 2018
 » [technical info p. 282](#)



Vad Wood Polipropilene

sedia con braccioli / chair with armrests
 CASAMANIA / Luca Nichetto, 2011
 » [technical info p. 334](#)



Bolero Bistrot

favolino da bistrot / cafe bar table
HORM / Renato Zamberlan, 2018
» [technical info p. 281](#)



Ray Sedia

sedia / chair
HORM / Orlandini Design, 2010
» [technical info p. 308](#)

Bolero Estensibile

tavolo estensibile / extendable table
HORM / Renato Zamberlan, 2018
» [technical info p. 282](#)



Vad Wood
Polipropilene

sedia con braccioli / chair with armrests
CASAMANIA / Luca Nichetto, 2011
» [technical info p. 334](#)



Vad Wood *Polipropilene*

sedia con braccioli / chair with armrests
CASAMANIA / Luca Nichetto, 2011

» [technical info p. 334](#)

Meduse Tavolo

tavolo / table
CASAMANIA / GamFratesi, 2009

» [technical info p. 301](#)



Vad Collection

sedia con braccioli / chair with armrests
 CASAMANIA / Luca Nichetto, 2009 – 2011
 » [technical info p. 329, 330, 331, 332, 333, 334](#)



Vad Girevole
 Imbottita

Vad Girevole
 Imbottita

Vad Wood
 Imbottita

Vad Impilabile
 Cuoietto

Vad Wood
 Imbottita

Vad Wood *Cuoietto*

sedia con braccioli / chair with armrests
CASAMANIA / Luca Nichetto, 2011
» [technical info p. 333](#)



Vad Girevole *Imbottita*

sedia con braccioli / chair with armrests
CASAMANIA / Luca Nichetto, 2011
» [technical info p. 329](#)



Vad Impilabile *Polipropilene*

sedia con braccioli / chair with armrests
CASAMANIA / Luca Nichetto, 2009
» [technical info p. 332](#)



Vad Impilabile *Imbottita*

sedia con braccioli / chair with armrests
CASAMANIA / Luca Nichetto, 2009
» [technical info p. 331](#)



Stereo Wood
Polipropilene

sedia / chair
CASAMANIA / Luca Nichetto, 2012
» [technical info p. 319](#)



Stereo Metal *Polipropilene*

sedia / chair
CASAMANIA / Luca Nichetto, 2015
» [technical info p. 317](#)



Meduse Tavolo

tavolo / table
CASAMANIA / GamFratesi, 2009
» [technical info p. 301](#)



Opus Incertum
contenitore multiuso / multi-use shelf organizer
vol. 02

Stereo Impilabile *Polipropilene*

sedia / chair
CASAMANIA / Luca Nichetto, 2008
» [technical info p. 315](#)



Tango

tavolo / table

HORM / Renato Zamberlan & Joe Doucet, 2016
» [technical info p. 322](#)



Stereo Collection

sedia / chair

CASAMANIA / Luca Nichetto, 2012 – 2015

» [technical info p. 314, 315, 316, 317, 318, 319](#)



Stereo Wood
Imbottita Fronte / Retro

Stereo Metal
Imbottita Frontalmente

Stereo Wood
Imbottita Fronte / Retro

Stereo Impilabile
Imbottita Frontalmente

Stereo Wood *Imbottita*

sedia / chair
CASAMANIA / Luca Nichetto, 2012
» [technical info p. 318](#)



Leon Full Color
media / sideboard
vol. 02

J – Table

scrivania / desk
 HORM / Jean Francois Gomrée, 2004
 » [technical info p. 294](#)



Stereo Impilabile *Polipropilene*

sedia / chair
 HORM / Luca Nichetto, 2008
 » [technical info p. 315](#)



Bek

sedia pieghevole / folding chair
CASAMANIA / Giulio Iacchetti, 2007
» [technical info p. 279](#)



Raphia *Alluminio*

sedia con braccioli / chair with armrests
CASAMANIA / LucidiPevere, 2018
» [technical info p. 306](#)



Bifronte

tavolino / side table
HORM / SIH – homage to Toyo Ito, 2010
» [technical info p. 280](#)

Raphia Rocking

sedia a dondolo / rocking chair
CASAMANIA / LucidiPevere, 2013
» [technical info p. 307](#)



Raphia *Alluminio*

sedia con braccioli / chair with armrests
CASAMANIA / LucidiPevere, 2018
» [technical info p. 306](#)

Meduse Tavolino

tavolino / side table
CASAMANIA / GamFratesi, 2009
» [technical info p. 300](#)



Raphia Rattan

sedia con braccioli / chair with armrests
CASAMANIA / LucidiPevere, 2013
» [technical info p. 306](#)



Raphia Rattan

sedia con braccioli / chair with armrests
CASAMANIA / LucidiPevere, 2013
» [technical info p. 306](#)

Meduse Tavolo

tavolo / table
CASAMANIA / GamFratesi, 2009
» [technical info p. 301](#)



Meduse Tavolo

tavolo / table
 CASAMANIA / GamFratesi, 2009
 » [technical info p. 301](#)



Stereo Metal Polipropilene

sedia / chair
 CASAMANIA / Luca Nichetto, 2015
 » [technical info p. 317](#)



Lobby

poltroncina / easy chair
CASAMANIA / Stokkeustad, 2009
» [technical info p. 298](#)

Lobby

poltroncina / easy chair
CASAMANIA / Stokkeustad, 2009
» [technical info p. 298](#)



Hexagon

tavolino / side table
 HORM / Steven Holl, 2011
 » technical info p. 291

Alieno Peacock

lounge / lounge chair
 CASAMANIA / GamFratesi, 2009 – 2015
 » technical info p. 276



Alieno & Alieno High

sedia / chair
CASAMANIA / GamFratesi, 2009 – 2015
» [technical info p. 276](#)



Alieno

sedia / chair
CASAMANIA / GamFratesi, 2009 – 2015
» [technical info p. 276](#)



Alieno High

sedia / chair

CASAMANIA / GamFratesi, 2009 – 2015

» [technical info p. 276](#)



Alieno

sedia / chair
CASAMANIA / GamFratesi, 2009 – 2015
» [technical info p. 276](#)

T1 Outdoor

tavolino da bistrot / cafe bar table
CASAMANIA / S&H, 2010 – 2015
» [technical info p. 320](#)



Him & Her *Opaca*

sedia / chair
CASAMANIA / Fabio Novembre, 2008
» [technical info p. 293](#)



T₁ Outdoor

tavolino da bistrot / cafe bar table
CASAMANIA / SH, 2010 – 2015
» [technical info p. 320](#)



Him & Her *Opaca*

sedia / chair
CASAMANIA / Fabio Novembre, 2008
» [technical info p. 293](#)

T1 Indoor

tavolino da bistrot / cafe bar table
CASAMANIA / SHH, 2010 – 2015
» [technical info p. 320](#)



Stereo Metal Polipropilene

sedia / chair
CASAMANIA / Luca Nichetto, 2015
» [technical info p. 317](#)

T1 Outdoor

tavolino da bistrot / cafe bar table
CASAMANIA / SHH, 2010 – 2015
» [technical info p. 320](#)



Bek

sedia pieghevole / folding chair
CASAMANIA / Giulio Iacchetti, 2007
» [technical info p. 279](#)

T1 Outdoor

tavolino da bistrot / cafe bar table
CASAMANIA / S&H, 2010 - 2015
» [technical info p. 320](#)



T2

tavolino da bistrot / cafe bar table
 CASAMANIA / STH, 2010 – 2015
 » [technical info p. 321](#)



Pressious

sgabello / stool
 CASAMANIA / Harry&Camila, 2009
 » [technical info p. 304](#)



T4

tavolino da bistrot / cafe bar table
CASAMANIA / S+H, 2010 – 2015
» technical info p. 321



Bek

sedia pieghevole / folding chair
CASAMANIA / Giulio Iacchetti, 2007
» technical info p. 279





RememberMe Sedia

sedia / chair
CASAMANIA / Tobias Juretzek, 2011
» [technical info p. 309](#)



RememberMe Bistrot

tavolino da bistrot / cafe bar table
 CASAMANIA / Tobias Juretzek, 2011
 » [technical info p. 308](#)



Stereo Metal Polipropilene

sedia / chair
 CASAMANIA / Luca Nichetto, 2015
 » [technical info p. 317](#)



La Dina

sedia / chair
CASAMANIA / Luca Nichetto, 2014
» [technical info p. 296](#)



Charlotte

poltroncina / easy chair
HORM / Mario Botta, 1994
» [technical info p. 286](#)



Sin

sedia / chair
HORM / SH, 1995
» technical info p. 313



Sin

sedia / chair
HORM / SH, 1995
» [technical info p. 313](#)

Bar

sgabello / stool
HORM / SH, 1996
» [technical info p. 279](#)



Bar

sgabello / stool
HORM / SH, 1996
» [technical info p. 279](#)



Kant

sgabello / stool
CASAMANIA / Karim Rashid, 2006
» [technical info p. 295](#)



Kant Lift

sgabello / stool
CASAMANIA / Karim Rashid, 2006
» [technical info p. 295](#)



Pressious

sgabello / stool
CASAMANIA / Harry&Camila, 2009
» [technical info p. 304](#)



Ripples Sgabello

sgabello / stool

HORM / SHH - homage to Toyo Ito, 2008

» technical info p. 311



Ripples

panca / bench
HORM / Toyo Ito, 2003
» [technical info p. 310](#)



Ripples

panca / bench
HORM / Toyo Ito, 2003
» [technical info p. 310](#)

Ripples Outdoor

panca / bench
HORM / SH – homage to Toyo Ito, 2011
» [technical info p. 311](#)



Ripples – Like a River

panca / bench
HORM / Toyo Ito, 2011
» [technical info p. 310](#)



Ripples Tavolo

tavolo / table
 HORM / SHH – homage to Toyo Ito, 2007
 » [technical info p. 312](#)



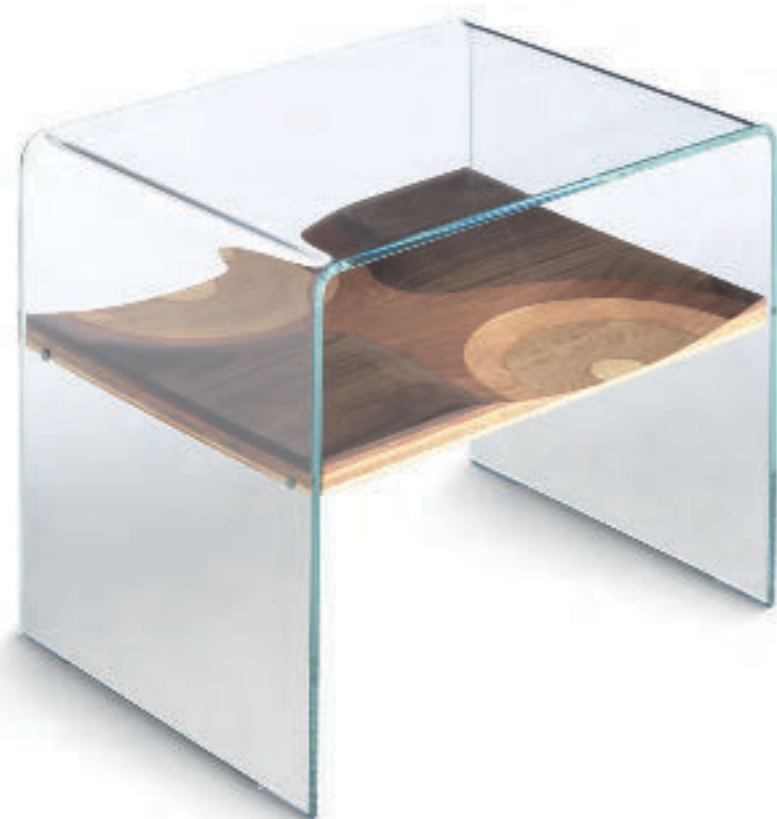
Ripples Sgabello

sgabello / stool
 HORM / SHH – homage to Toyo Ito, 2008
 » [technical info p. 311](#)



Bifronte

tavolino / side table
 HORM / SHH – homage to Toyo Ito, 2010
 » [technical info p. 280](#)



Bifronte + Cestone

comodino / nightstand
 HORM / SHH – homage to Toyo Ito, 2010
 » [technical info p. 280](#)



Io & Te

tavolino o comodino / side table or nightstand
HORM / Esa Vesmanen, 2013
» [technical info p. 294](#)



Soho

poltrona / armchair
HORM / Studio Balutto, 2016
» [technical info p. 313](#)

Autoreggente Tavolino

tavolino / coffee table
HORM / Patrizia Bertolini, 2016
» [technical info p. 277](#)



Autoreggente Tavolino

tavolino / coffee table
HORM / Patrizia Bertolini, 2016
» [technical info p. 277](#)

Soho

poltrona / armchair
HORM / Studio Balutto, 2016
» [technical info p. 313](#)



Tout le Jour Tavolino

tavolino / coffee table
HORM / Marc Thorpe, 2016
» [technical info p. 326](#)



Tout le Jour Lounge

lounge / lounge chair
HORM / Marc Thorpe, 2016
» [technical info p. 325](#)



Tout le Jour Sofa
divanetto / sofa
vol. 05



Tout le Jour Lounge

lounge / lounge chair
HORM / Marc Thorpe, 2016
» [technical info p. 325](#)



Albino Family

tavolino / coffee and side table
HORM / Salvatore Indriolo, 2011
» [technical info p. 275](#)



Twee T.
lampada / lamp
vol. 03

Torii

tavolino / coffee table
HORM / Renato Zamberlan, 2015
» [technical info p. 324](#)

Tout le Jour Lounge

lounge / lounge chair
HORM / Marc Thorpe, 2016
» [technical info p. 325](#)

Torii

tavolino / coffee table
HORM / Renato Zamberlan, 2015
» [technical info p. 324](#)



Sienna

poltrona / armchair
 HORM / Studio Balutto, 2016
 » [technical info p. 312](#)



Albino Family

tavolino / coffee and side table
 HORM / Salvatore Indriolo, 2011
 » [technical info p. 275](#)



Albino Family

tavolino / coffee and side table
HORM / Salvatore Indriolo, 2011
» technical info p. 275



Tide Buffet
madia / bar cabinet
vol. 02

Albino Family

tavolino / coffee and side table
HORM / Salvatore Indriolo, 2011
» [technical info p. 275](#)



Albino Torcia

tavolino / side table

HORM / Salvatore Indriolo, 2010

» [technical info p. 276](#)



Albino Torcia

tavolino / side table
HORM / Salvatore Indriolo, 2010
» [technical info p. 276](#)



Carnaby

poltrona / armchair
 HORM / Studio Balutto, 2016
 » [technical info p. 284](#)



Meduse Tavolino

tavolino / side table
 CASAMANIA / GamFratesi, 2009
 » [technical info p. 300](#)



Meduse Tavolino

tavolino / side table
CASAMANIA / GamFratesi, 2009
» [technical info p. 300](#)

Urban

panca / bench
 CASAMANIA / Claudio Bellini, 2009
 » [technical info p. 328](#)



Meduse Tavolino

tavolino / side table
 CASAMANIA / GamFratesi, 2009
 » [technical info p. 300](#)



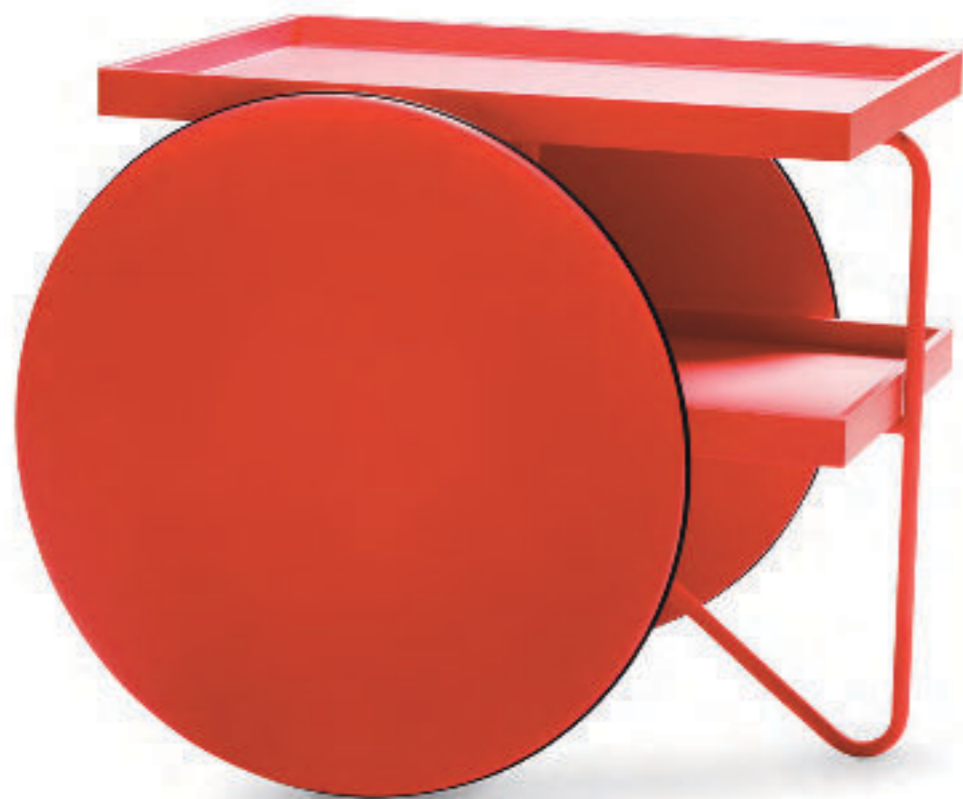
Chariot

tavolino / side table
CASAMANIA / GamFratesi, 2012
» [technical info p. 285](#)



Chariot

tavolino / side table
CASAMANIA / GamFratesi, 2012
» technical info p. 285



Twine Tavolino

tavolino / coffee and side table
CASAMANIA / Wis Design, 2008
» [technical info p. 328](#)



Elfo Indoor

bean bag
HORM / Ilaria Marelli, 2012
» technical info p. 288



Twine Tavolino

tavolino / coffee and side table
CASAMANIA / Wis Design, 2008
» technical info p. 328

T4

tavolino da bistrot / cafe bar table
CASAMANIA / SH, 2010 - 2015
» technical info p. 321





Elfo Outdoor

bean bag
HORM / Ilaria Marelli, 2012
» [technical info p. 288](#)

Hexagon

tavolino o sgabello / side table or stool
HORM / Steven Holl, 2011
» [technical info p. 291](#)

Hexagon

tavolino o sgabello / side table or stool
 HORM / Steven Holl, 2011
 » [technical info p. 291](#)



Alieno Peacock

lounge / lounge chair
 CASAMANIA / GamFratesi, 2009 – 2015
 » [technical info p. 276](#)



Hexagon

tavolino o sgabello / side table or stool
HORM / Steven Hall, 2011
» [technical info p. 291](#)



QuaDror™ 01

tavolino / side table
HORM / Dror, 2015
» [technical info p. 304](#)



Tout le Jour Lounge

lounge / lounge chair
HORM / Marc Thorpe, 2016
» [technical info p. 325](#)



Giro Pouf

pouf / ottoman
CASAMANIA / Claesson Koivisto Rune, 2013
» [technical info p. 290](#)

Lily

tavolino / coffee and side table
CASAMANIA / Marc Thorpe, 2015
» [technical info p. 298](#)



Giro Pouf

pouf / ottoman
CASAMANIA / Claesson Koivisto Rune, 2013
» [technical info p. 290](#)

Lily

tavolino / coffee and side table
CASAMANIA / Marc Thorpe, 2015
» [technical info p. 298](#)



Giro Tavolino

tavolino / coffee table
 CASAMANIA / Claesson Koivisto Rune, 2013
 » technical info p. 291



Giro Pouf

pouf / ottoman
 CASAMANIA / Claesson Koivisto Rune, 2013
 » technical info p. 290



Solaio Libreria
 libreria / bookcase
 vol. 02

Samoa Large
 divano letto / sofa bed
 vol. 04

Pollon

pouf / ottoman
CASAMANIA / SH, 2005
» technical info p. 303



Morfino & Morfino Pouf

bean bag e pouf / bean bag and ottoman

CASAMANIA / SIH, 2005

» [technical info p. 302](#)

Morfino Kids

bean bag
CASAMANIA / SH, 2005
» technical info p. 302



Morfino & Morfino Pouf

bean bag e pouf / bean bag and ottoman
CASAMANIA / SH, 2005
» technical info p. 302



Opus Incertum
contenitore multiuso / multiuse shelf organizer
vol. 02

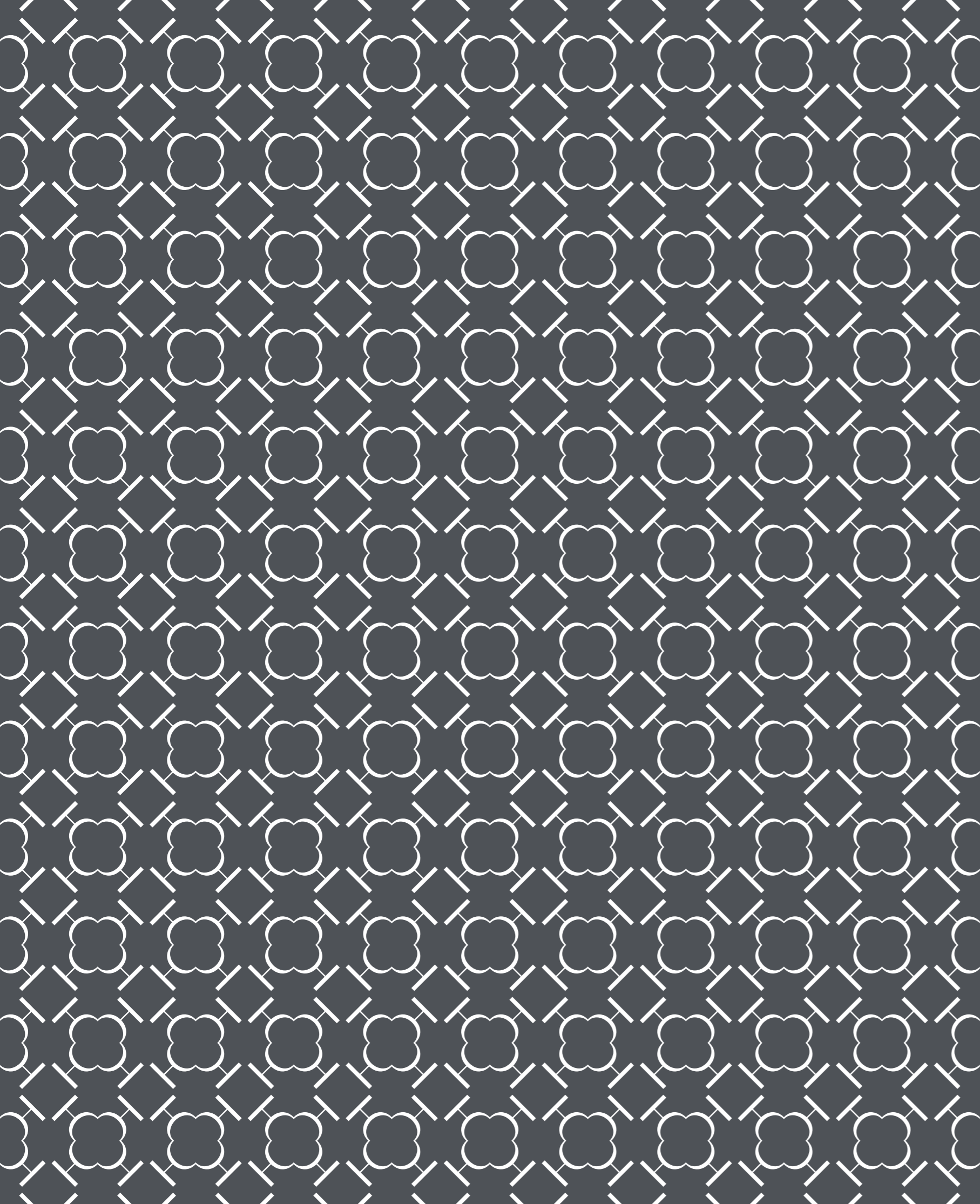
Cherish Kids

sedia per bambini / children's chair

HORM / SH, 2011

» [technical info p. 288](#)





Finiture e materiali
Finishes and materials
Finitions et matériaux
Ausführungen und Materialien
Acabados y materiales

faggio imbiancato
whitened beech
hêtre blanchi
Buche geweißt
haya blanqueada



Cherish / Hcb /
Leon Wood / Ray Sedia /
Spectro / Twist

faggio naturale
natural beech
hêtre naturel
Buche Natur
haya natural



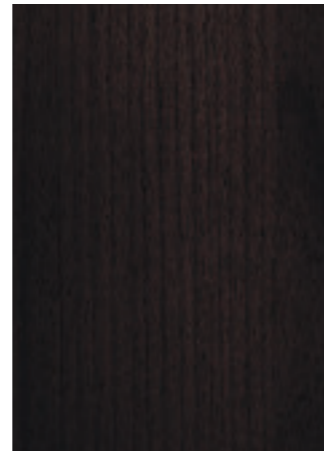
Cherish / Twist

faggio bois blond
bois blond beech
hêtre bois blond
Buche Bois Blond
haya bois blond



Hcb / Leon Wood /
Spectro / Twist

faggio mocha
mocha beech
hêtre moka
Buche Mokka
haya mocha



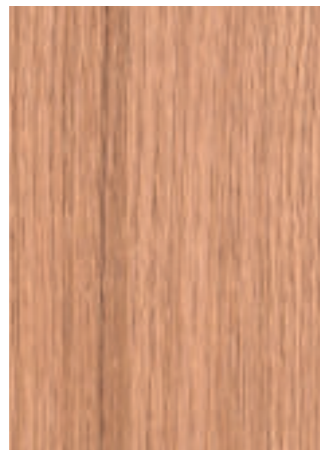
Anish / Carlos / Cherish /
Hcb / Leon Wood / Pressious /
Ray Sedia / Spectro / Twist

frassino bianco
white ash
frêne blanc
Esche Weiß
fresno blanco



Ki

frassino tinto rovere
oak-stained ash
frêne teinté chêne
eichefarbig gebeizt Esche
fresno teñido roble



La Dina / Milady /
Velasca

frassino beige
beige grey ash
frêne gris beige
Esche Beigegrau
fresno gris beige



Carnaby / La Dina /
Milady / Velasca

frassino mocha
mocha ash
frêne moka
Esche Mokka
fresno mocha



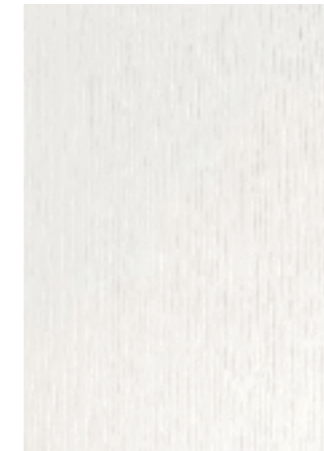
La Dina / Ma.Re /
QuaDror 01 / QuaDror 03 /
QuaDror 04

frassino nero
black ash
frêne noir
Esche Schwarz
fresno negro



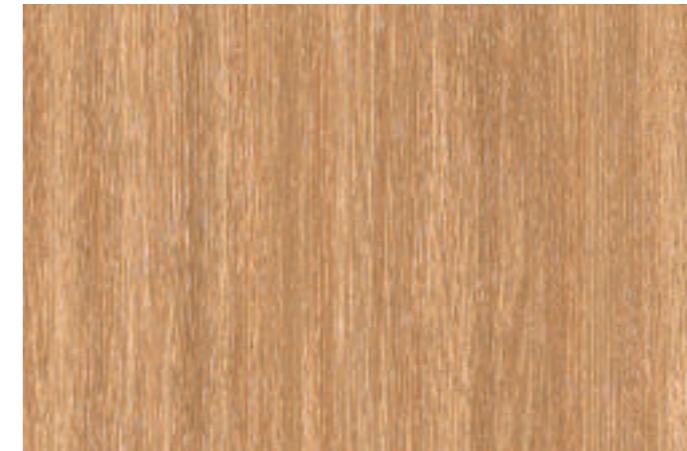
Carnaby / Ki / Milady /
Pablita / Sienna / Soho /
Velasca

rovere bianco
white oak
chêne blanc
Eiche Weiß
roble blanco



Andaman / Chariot /
Meduse Tavolo / Moheli / Xx

rovere naturale
natural oak
chêne naturel
Eiche Natur
roble natural



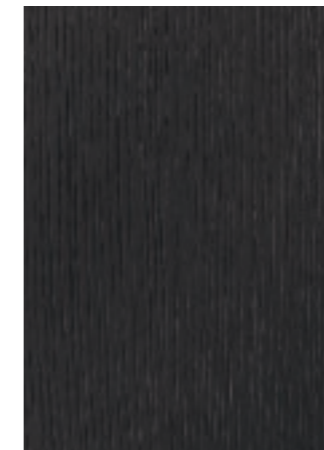
Alberto Appendiabiti / Albino Family / Autoreggente Tavolo /
Bolero / Capriata / Chariot / Cobra / Giro Tavolino /
J – Table / Leon Decor / Lily / Maritime / Meduse Tavolo /
Ray Poltroncina & Sedia / Solaio Armadio & Libreria / Sottiletto /
Stereo Wood / Tango / Twine / Twine Tavolino / Vad Wood /
Woodclock / Wow! Plus / Xx

rovere beige
beige grey oak
chêne gris beige
Eiche Beigegrau
roble gris beige



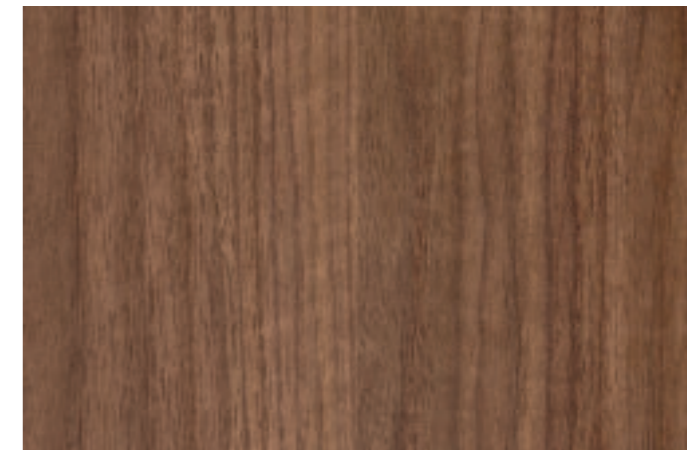
Maritime

rovere mocha
mocha oak
chêne moka
Eiche Mokka
roble mocha



Andaman / Barbara /
Capriata / Chariot / Cobra /
Maritime / Meduse Tavolo /
Moheli / Solaio Armadio &
Libreria / Sottiletto /
Twine Tavolino / Xx

noce canaletto
walnut
noyer
Nussbaum
nogal



93 – 08 / Albino Family / Albino Torcia / Anish /
Autoreggente / Barbara / Bifronte / Bolero / Bureau / Cobra /
Flower / Ginevra / Io e Te / J – Table / Ki / Leon Decor /
Lily / Meduse Tavolo / Numero 3 / Ray Poltroncina & Sedia /
Singles / Sottiletto / Stereo Wood / Tango / Tribeca / Tutù /
Twine / Twine Tavolino / Vad Wood / Wow! Plus / Woodclock

okumé
okoume
okumé
Okume
ocume



Hexagon / Ripples Outdoor

ontano + noce canaletto
alder + walnut
aulne + noyer
Erle + Nussbaum
aliso + nogal



Sendai / Sendai Crystal

nero-bianco
black-white
noir-blanc
Schwarz-Weiß
negro-blanco



Sudoku

salice nero
black willow
saule noir
Weide Schwarz
sauce negro



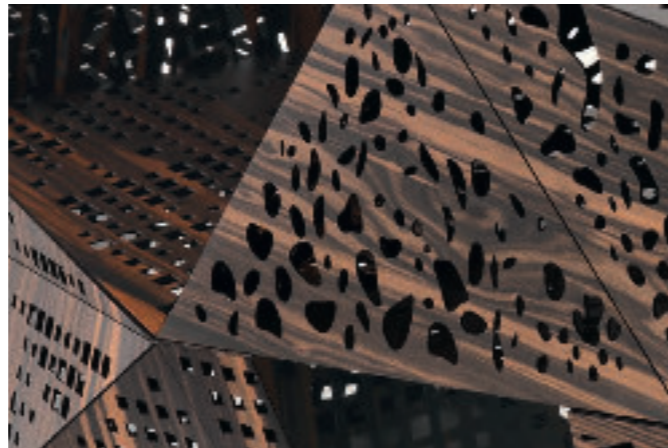
Mamanonmama

legno origami in noce canaletto — brevetto HORM
origami wood in walnut — HORM patent
bois origami en noyer — brevet HORM
Origami-Nussbaum — HORM-Patent
madera origami de nogal — patente HORM



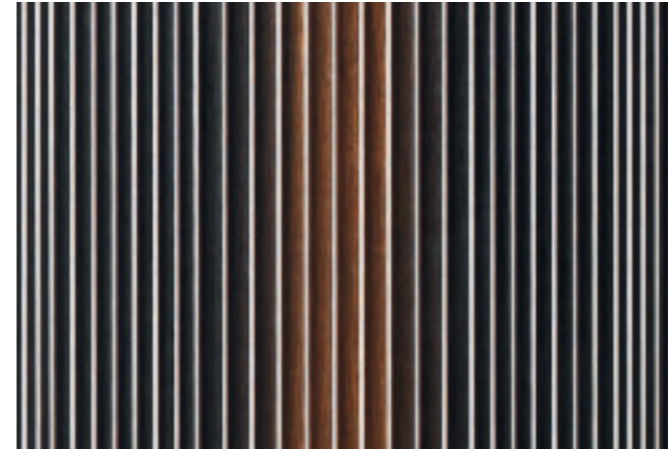
Not Riddled / Plywood Chandelier / Riddled Front /
Riddled Table / Riddled Totem

legno origami in ebano — brevetto HORM
origami wood in ebony — HORM patent
bois origami en ébène — brevet HORM
Origami-Ebenholz — HORM-Patent
madera origami de ébano — patente HORM



Riddled Buffet

rovere termotrattato + HPL bianco
thermo-treated oak + white HPL
chêne thermotraité + HPL blanc
wärmebehandelte Eiche + HPL Weiß
roble termotrattado + HPL blanco



Carlos

noce canaletto / mogano / ciliegio / rovere / frassino
walnut / mahogany / cherry / oak / ash
noyer / acajou / cerisier / chêne / frêne
Nussbaum / Mahagoni / Kirsche / Eiche / Esche
nogal / caoba / cerezo / roble / fresno



Bifronte / ComRi / Ripples / Ripples — Like a River /
Ripples Sgabello / Ripples Tavolo

faggio imbiancato / faggio moca / faggio naturale
whitened beech / mocha beech / natural beech
hêtre blanchi / hêtre moka / hêtre naturel
Buche geweißt / Buche Mokka / Buche Natur
haya blanqueada / haya moca / haya natural



Twist Tricolor

faggio imbiancato / faggio bois blond / arancio / giallo
whitened beech / bois blond beech / orange / yellow
hêtre blanchi / hêtre bois blond / orange / jaune
Buche geweißt / Buche Bois Blond / Orange / Gelb
haya blanqueada / haya bois blond / naranja / amarillo



Twist Multicolor

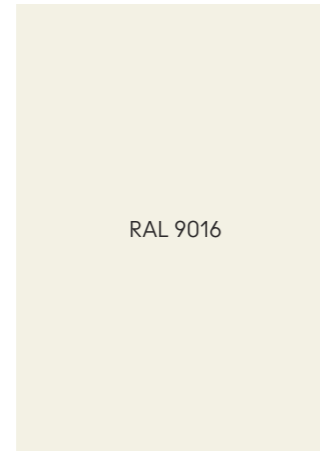
Colori RAL per laccati opachi, metalli e plastiche^(*) / RAL Colors for matt lacquers, metals and plastic^(*)

nero
black
noir
Schwarz
negro



Vedi schede tecniche
See technical sheets
Voir les fiches techniques
Siehe technische Datenblätter
Ver fichas técnicas

bianco
white
blanc
Weiß
blanco



Vedi schede tecniche
See technical sheets
Voir les fiches techniques
Siehe technische Datenblätter
Ver fichas técnicas

polvere
dusty grey
gris poussière
Staubgrau
gris polvo



Vedi schede tecniche
See technical sheets
Voir les fiches techniques
Siehe technische Datenblätter
Ver fichas técnicas

beige
beige grey
gris beige
Beigegrau
gris beige



Vedi schede tecniche
See technical sheets
Voir les fiches techniques
Siehe technische Datenblätter
Ver fichas técnicas

rosso vino
wine red
rouge vin
Weinrot
rojo vino



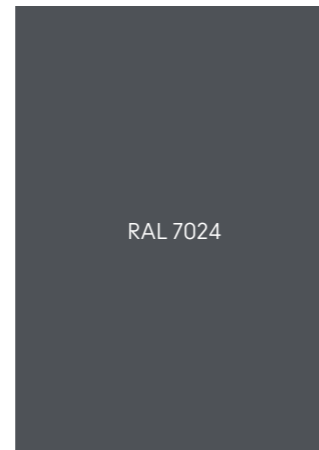
Vedi schede tecniche
See technical sheets
Voir les fiches techniques
Siehe technische Datenblätter
Ver fichas técnicas

bruno
brown grey
gris brun
Braungrau
gris parduzco



Vedi schede tecniche
See technical sheets
Voir les fiches techniques
Siehe technische Datenblätter
Ver fichas técnicas

grafite
graphite
graphite
Graphit
grafito



Vedi schede tecniche
See technical sheets
Voir les fiches techniques
Siehe technische Datenblätter
Ver fichas técnicas

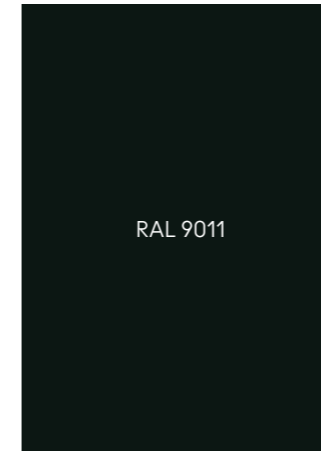
rosso chiaro brillante
luminous bright red
rouge clair brillant
Leuchthellrot
rojo claro brillante



Chariot

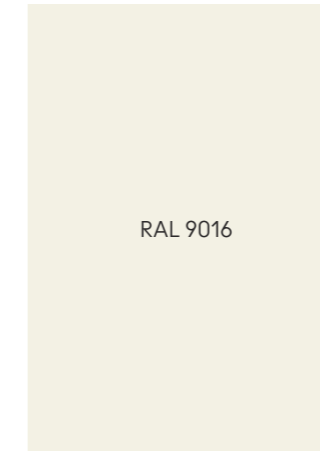
Laccati lucidi / Glossy lacquers

nero
black
noir
Schwarz
negro



Vedi schede tecniche
See technical sheets
Voir les fiches techniques
Siehe technische Datenblätter
Ver fichas técnicas

bianco
white
blanc
Weiß
blanco



Vedi schede tecniche
See technical sheets
Voir les fiches techniques
Siehe technische Datenblätter
Ver fichas técnicas

polvere
dusty grey
gris poussière
Staubgrau
gris polvo



Vedi schede tecniche
See technical sheets
Voir les fiches techniques
Siehe technische Datenblätter
Ver fichas técnicas

beige
beige grey
gris beige
Beigegrau
gris beige



Vedi schede tecniche
See technical sheets
Voir les fiches techniques
Siehe technische Datenblätter
Ver fichas técnicas

rosso vino
wine red
rouge vin
Weinrot
rojo vino



Vedi schede tecniche
See technical sheets
Voir les fiches techniques
Siehe technische Datenblätter
Ver fichas técnicas

bruno
brown grey
gris brun
Braungrau
gris parduzco



Vedi schede tecniche
See technical sheets
Voir les fiches techniques
Siehe technische Datenblätter
Ver fichas técnicas

grafite
graphite
graphite
Graphit
grafito

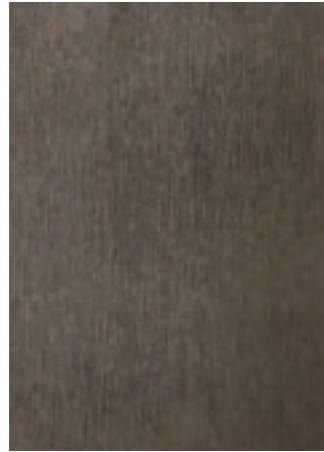


Vedi schede tecniche
See technical sheets
Voir les fiches techniques
Siehe technische Datenblätter
Ver fichas técnicas

(*)

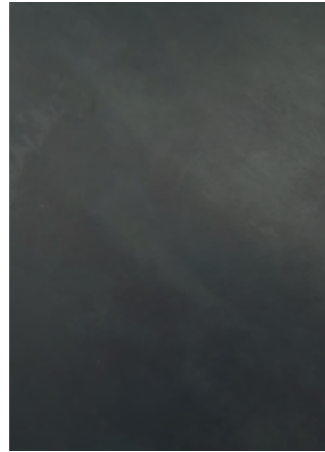
Polypropylene / Polyethylene / Polyamide

brunito
burnished
bruni
Brüniert
bruñido



Basamento Mid-Century
Modern

crudo
crude
cru
Roh
crudo



QuaDror 01 / QuaDror 02 /
Torii

verniciato bronzo antico
antique bronze painted
verni bronze antique
Vintage Bronze beschichtet
pintado de bronce antiguo



Meduse Tavolo / Network

verniciato oro
gold painted
verni or
Gold beschichtet
pintado de oro



Chariot

cromato
chromed
chromé
Chrom
cromado



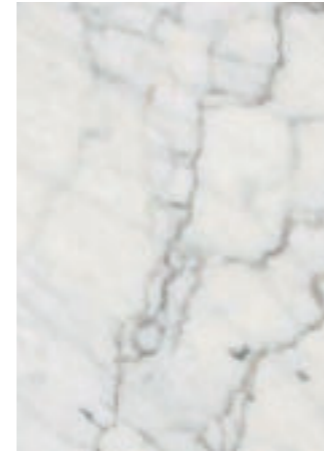
Bar / Sin / Stereo Impilabile /
T2 / Vad Girevole /
Vad Impilabile

cromo nero
black chrome
chrome noir
Schwarz Chrom
cromo negro



Albino Family

marmo Carrara
Carrara marble
marbre Carrara
Carrara Marmor
mármol Carrara



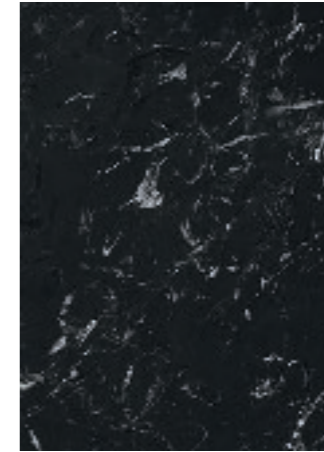
Albino Family / Flower /
Lily / Meduse Tavolo

marmo Emperador
Emperador marble
marbre Emperador
Emperador Marmor
mármol Emperador



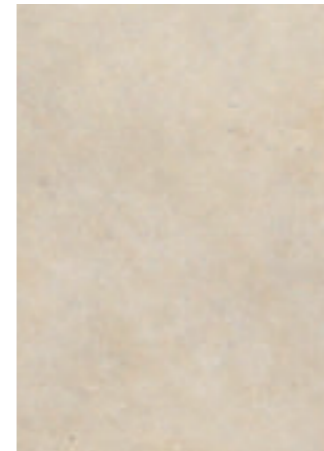
Albino Family / Barbara /
Lily / Meduse Tavolo /
Tout le Jour Tavolino

marmo Marquina
Marquina marble
marbre Marquina
Marquina Marmor
mármol Marquina



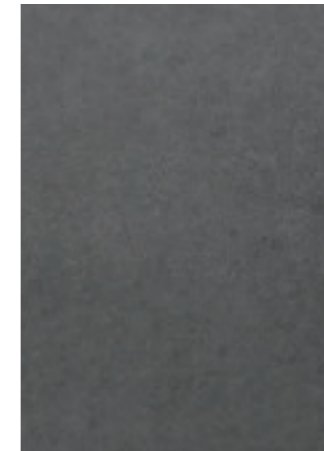
Albino Family / Barbara /
Flower / Lily / Meduse
Tavolo / Tout le Jour Tavolino

pietra leccese
Lecce limestone
pierre de Lecce
Lecce-Stein
piedra de Lecce



Hexagon

ceramica grigia
grey ceramic
céramique gris
graue Keramik
cerámica gris



Ma.Re / Torii

cemento
concrete
béton
Beton
hormigón



Barbara

bianco
white
blanc
Weiß
blanco

bordeaux
bordeaux
bordeaux
Bordeaux
bordeaux

verde scuro
dark green
vert foncé
Dunkelgrün
verde oscuro

verde chiaro
light green
vert clair
Lichtgrün
verde claro

nero
black
noir
Schwarz
negro

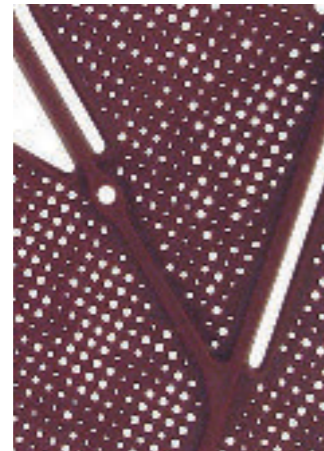
bianco
white
blanc
Weiß
blanco

polvere
dusty grey
gris poussière
Staubgrau
gris polvo

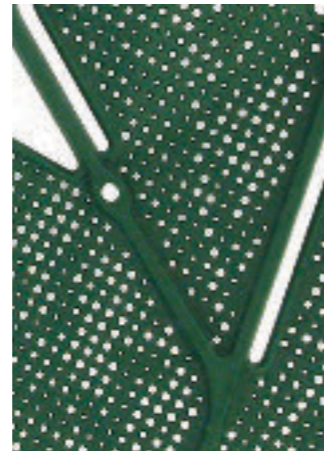
beige
beige grey
gris beige
Beigegrau
gris beige



Maria



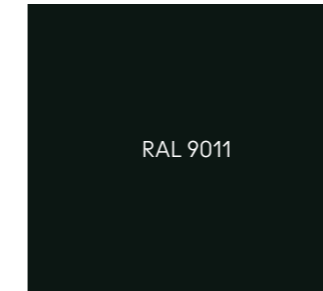
Maria



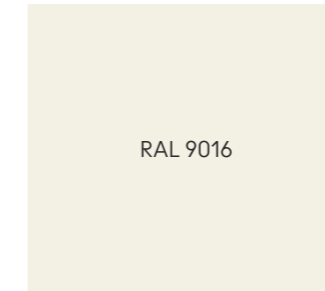
Maria



Maria



Him & Her Lucida /
Korzina / Zontik



Him & Her Lucida



Him & Her Lucida /
Korzina / Zontik



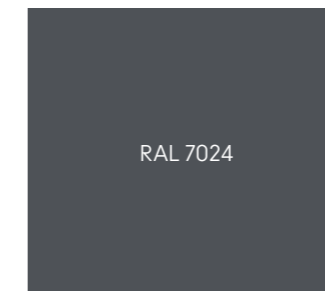
Him & Her Lucida /
Korzina / Zontik

rosso vino
wine red
rouge vin
Weinrot
rojo vino



Him & Her Lucida /
Korzina / Zontik

grafite
graphite
graphite
Graphit
grafito



Him & Her Lucida

oro perlato
pearl gold
or nacré
Perlgold
oro perlado



Him & Her Lucida

rosso arancio chiaro
bright red orange
orangé rouge clair
Hellrotorange
rojo claro aranjado



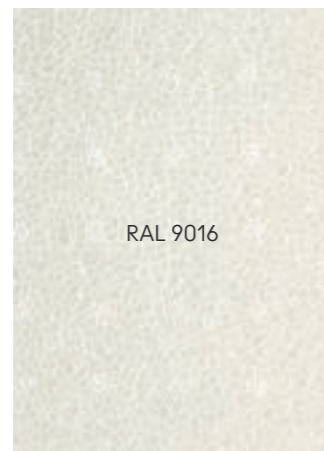
Him & Her Lucida

p. espanso nero
expanded p. black
p. expansé noir
expandiertes P. Schwarz
p. expandido negro



Opus Incertum

p. espanso bianco
expanded p. white
p. expansé blanc
expandiertes P. Weiß
p. expandido blanco



Opus Incertum

p. espanso polvere
expanded p. dusty grey
p. expansé gris poussière
expandiertes P. Staubgrau
p. expandido gris polvo



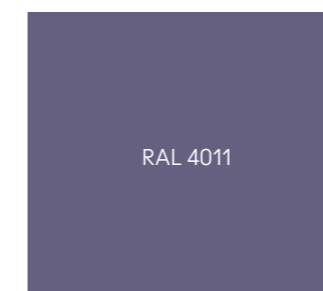
Opus Incertum

p. espanso beige
expanded p. beige grey
p. expansé gris beige
expandiertes P. Beigegrau
p. expandido gris beige



Opus Incertum

violetto perlato
pearl violet
violet nacré
Perlviolett
violeta perlado



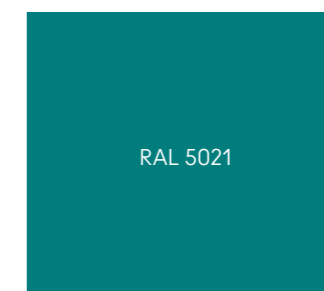
Him & Her Lucida

blu oltremare
ultramarine blu
bleu outremer
Ultramarinblau
azul ultramar



Him & Her Lucida

blu acqua
water blue
bleu d'eau
Wasserblau
azul agua



Him & Her Lucida

blu notte perlato
pearl night blue
bleu nuit nacré
Perlnachtblau
azul noche perlado

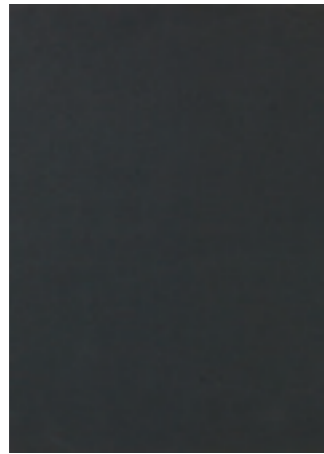


Him & Her Lucida

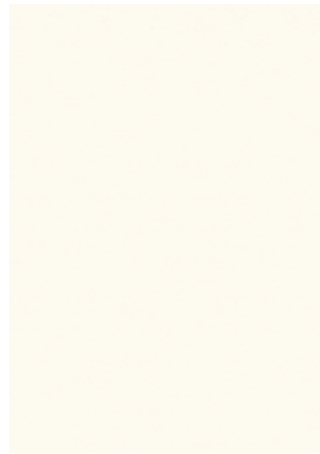
Fenix NTM® nero ingo 0720
 RAL Design 000 25 00
 Pantone P 179-16 C
 Ncs S 8500-N

Fenix NTM® bianco kos 0032
 RAL 9016
 Pantone P 1-9 C
 Ncs S 0500-N

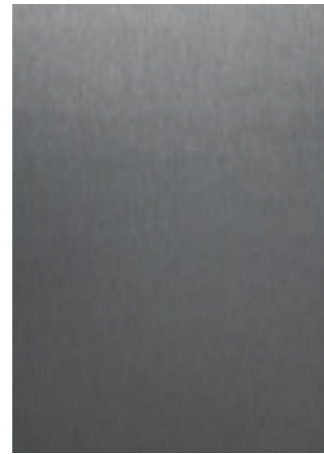
Fenix NTA® Acciaio Hamilton
 Fenix NTA® Hamilton Steel
 Fenix NTA® Acier Hamilton
 Fenix NTA® Hamilton Stahl
 Fenix NTA® Acero Hamilton



Bolero / Flower /
 Lazy Susan / Tango



Bolero / Flower / Tango



Bolero / Tango

midollino naturale
 natural wicker
 osier naturel
 Peddigrohr natur
 mimbre natural



Bar / Charlotte / Sin

rattan
 rattan
 rotin
 Rattan
 ratán



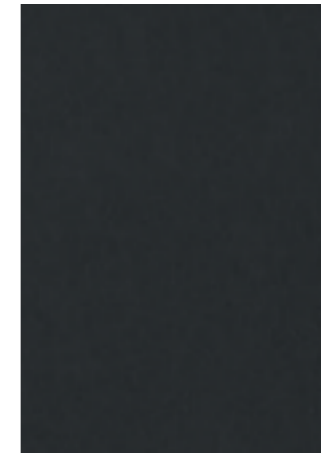
Raphia Rattan / Raphia Rocking

cuoio pieno fiore naturale
 hard leather grade 1 natural
 cuir pleine fleur naturel
 Kernleder Natur
 cuero natural



Pablita / Tout le Jour

cuoio pieno fiore nero
 hard leather grade 1 black
 cuir pleine fleur noir
 Kernleder Schwarz
 cuero negro



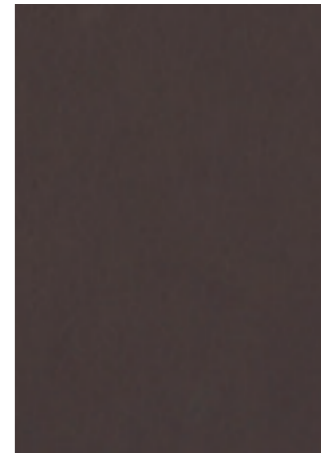
Pablita / Tout le Jour

cuoio pieno fiore grigio talpa
 hard leather grade 1 taupe
 cuir pleine fleur taupe
 Kernleder Taupe
 cuero gris raton



Pablita / Tout le Jour

cuoio pieno fiore testa di moro
 hard leather grade 1 brown
 cuir pleine fleur brun foncé
 Kernleder Dunkelbrown
 cuero testa di moro



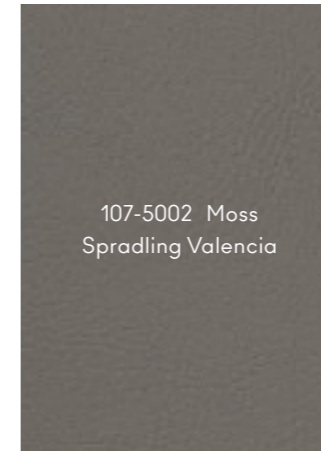
Pablita / Tout le Jour

Ecopelle
 Faux Leather
 Similcuir
 Kunstleder
 Ecopiel



Network

Ecopelle
 Faux Leather
 Similcuir
 Kunstleder
 Ecopiel



Network

Ecopelle
 Faux Leather
 Similcuir
 Kunstleder
 Ecopiel



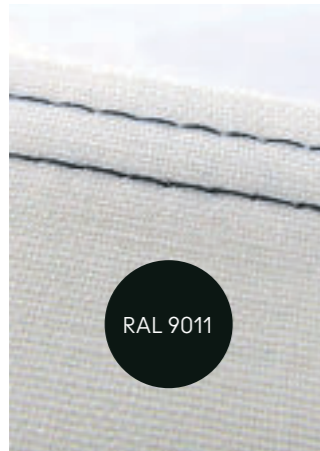
Network

Ecopelle
 Faux Leather
 Similcuir
 Kunstleder
 Ecopiel



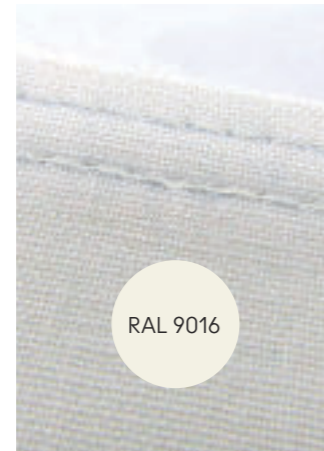
Network

nero
black
noir
Schwarz
negro



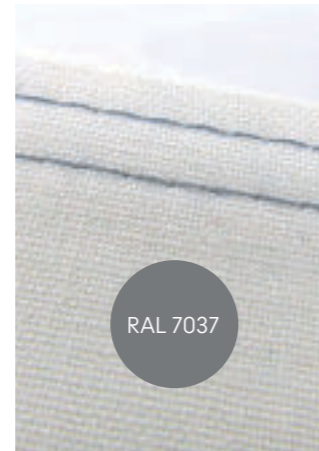
Lepel

bianco
white
blanc
Weiß
blanco



Lepel

polvere
dusty grey
gris poussière
Staubgrau
gris polvo



Lepel

giallo navone
colza yellow
jaune colza
Rapsgelb
amarillo colza



Lepel

rosso arancio chiaro
bright red orange
orangé rouge clair
Hellrotorange
rojo claro anaranjado



Lepel

rosso rubino
ruby red
rouge rubis
Rubinrot
rojo rubí



Lepel

rosa chiaro
light pink
rose clair
Hellrosa
rosa claro



Lepel

marrone noce
nut brown
brun noisette
Nussbraun
pardo nuez



Lepel

blu cobalto
cobalt blue
bleu cobalt
Kobaltblau
azul cobalto



Lepel

blu traffico
traffic blue
bleu signalisation
Verkehrsblau
azul tráfico



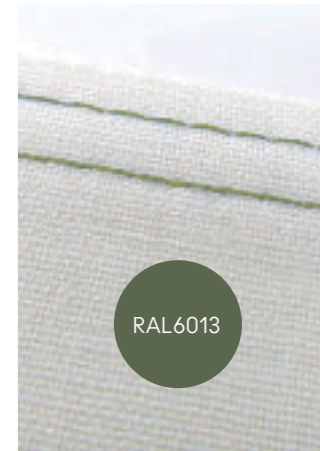
Lepel

verde brillante
luminous green
vert brillant
Leuchtgrün
verde brillante



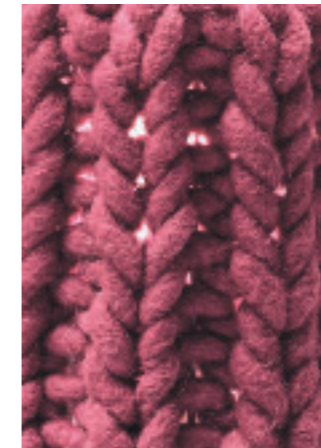
Lepel

verde canna
reed green
vert jonc
Schilfgrün
verde caña



Lepel

lana lampone
raspberry red wool
laine rouge framboise
Himbeerrot Wolle
lana rojo frambuesa



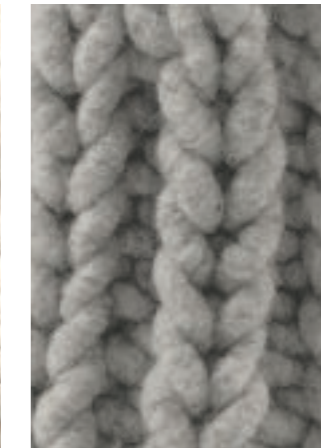
Granny

lana bianco ecrù
pure white wool
laine blanc pur
Reinweiß Wolle
lana blanco puro



Granny

lana grigio chiaro
light grey wool
laine gris clair
Lichtgrau Wolle
lana gris luminoso



Granny

Schede tecniche
Technical sheets
Fiches techniques
Technische Datenblätter
Fichas técnicas

Outdoor protetto

Prodotto adatto ad ambienti esterni protetti (es. verande coperte). Non adatto ad ambienti con presenza di pioggia, nebbia, rugiada o umidità persistente. È necessario il ricovero in area chiusa durante la notte. I prodotti realizzati con materiali naturali sono comunque soggetti a deterioramento.

Protected outdoor

Protected product suitable for protected outdoor areas (e.g. covered verandas). Not suitable for environments with rain, fog, dew or persistent humidity. Shelter in a closed area is necessary overnight. Products made from natural materials are however subject to deterioration.

Outdoor protégé

Produit adapté aux extérieurs protégés (par ex. vérandas couvertes). Ne convient pas aux environnements avec pluie, brouillard, rosée ou humidité persistante. Il est nécessaire de le rentrer dans une zone fermée pendant la nuit. Les produits fabriqués à partir de matériaux naturels peuvent, quoi qu'il en soit, se détériorer.

Geschützte Außenbereiche

Produkt, geeignet für geschützte Außenbereiche. Nicht geeignet für Umgebungen, die anhaltendem Regen, Nebel, Tau oder Feuchtigkeit ausgesetzt sind. Für die Nacht muss das Produkt in einen geschlossenen Bereich verlegt werden. Natürlichen Materialien unterliegen der Gefahr beschädigt zu werden.

Outdoor protegido

Producto apto para espacios externos protegidos (p. ej., verandas cubiertas). No apto para entornos con lluvia, niebla, rocío o humedad persistentes. Debe conservarse en lugar cerrado durante la noche. En todo caso, los productos realizados con materiales naturales están sujetos a deterioro.

Pioggia

Prodotto adatto ad ambienti esterni con precipitazioni atmosferiche normali. In caso di pioggia persistente è necessario il ricovero in area protetta. I prodotti realizzati con materiali naturali sono comunque soggetti a deterioramento.

Rain

Product suitable for outdoor environments with normal atmospheric precipitation. In case of persistent rain, shelter in a protected area is necessary. Products made from natural materials are however subject to deterioration.

Pluie

Produit adapté aux environnements extérieurs avec précipitations atmosphériques normales. En cas de pluie persistante, il est nécessaire de le rentrer dans une zone protégée. Les matériaux naturels peuvent, quoi qu'il en soit, se détériorer.

Regen

Das Produkt ist für Außenbereiche mit normalem Niederschlag geeignet. Bei anhaltendem Regen ist es notwendig, das Produkt in einen geschützten Bereich zu verlegen. Natürlichen Materialien unterliegen der Gefahr beschädigt zu werden.

Lluvia

Producto apto para espacios externos con precipitaciones normales. En caso de lluvia persistente se debe conservar en un área protegida. En todo caso, los productos realizados con materiales naturales están sujetos a deterioro.

Salsedine

Prodotto adatto ad aree marittime o con presenza di nebbia salina. Lavare frequentemente.

Seaside

Product suitable for sea areas or with salt spray. Wash frequently.

Bord de mer

Produit adapté aux zones maritimes ou en présence de brouillard salin. Laver fréquemment.

Am Meer

Für die Verwendung in Meernähe oder in Salznebel ausgesetzten Bereiche geeignet. Häufig waschen.

Orilla del mar

Producto apto para áreas marítimas con presencia de nieblas salinas. Lavar con frecuencia.

Impilabile

Prodotto realizzato per poter essere impilato.

Stackable

Product designed to be stacked.

Empilable

Produit conçu pour être empilé.

Stapelbar

Das Produkt ist zum Stapeln geeignet.

Apilable

Producto diseñado para ser apilado.

Struttura

› metallo
nero
bianco
cromo nero

Structure

› metal
black
white
black chrome

Structure

› métal
noir
blanc
chrome noir

Struktur

› Metall
Schwarz
Weiß
Schwarz Chrom

Estructura

› metal
negro
blanco
cromo negro

Piano

› laccato opaco
nero
bianco

Top

› matt lacquered
black
white

Plateau

› laqué mat
noir
blanc

Tischplatte

› matt lackiert
Schwarz
Weiß

Tablero

› lacado mate
negro
blanco

› rovere naturale
› noce canaletto

› natural oak
› walnut

› chêne naturel
› noyer

› Eiche Natur
› Nussbaum

› roble natural
› nogal

› marmo

Marquina
Carrara
Emperador

› marble

Marquina
Carrara
Emperador

› marbre

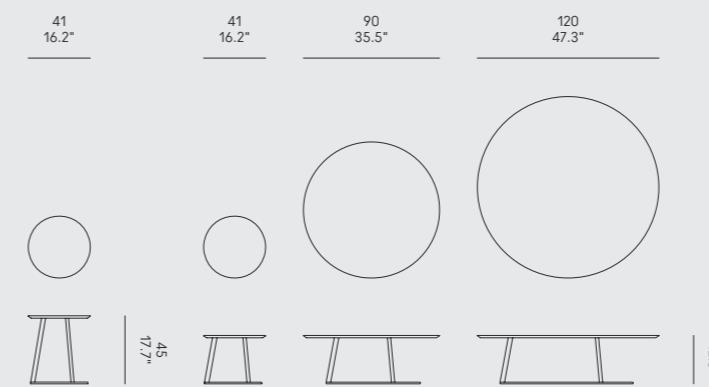
Marquina
Carrara
Emperador

› Marmor

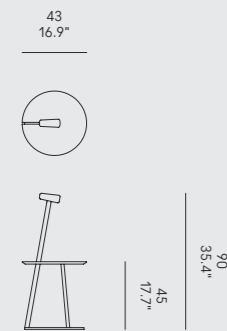
Marquina
Carrara
Emperador

› mármol

Marquina
Carrara
Emperador



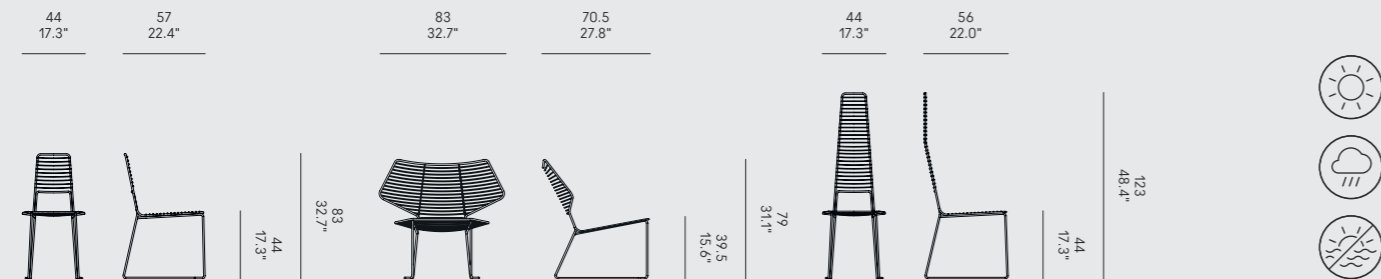
<u>Struttura</u> › metallo nero bianco	<u>Structure</u> › metal black white	<u>Structure</u> › métal noir blanc	<u>Struktur</u> › Metall Schwarz Weiß	<u>Estructura</u> › metal negro blanco
<u>Vassoio</u> › laccato opaco nero bianco	<u>Tray</u> › matt lacquered black white	<u>Plateau</u> › laqué mat noir blanc	<u>Servierplatte</u> › matt lackiert Schwarz Weiß	<u>Bandeja</u> › lacado mate negro blanco
› noce canaletto	› walnut	› noyer	› Nussbaum	› nogal



Alieno, Alieno High & Alieno Peacock

CASAMANIA / GamFratesi, 2009 – 2015

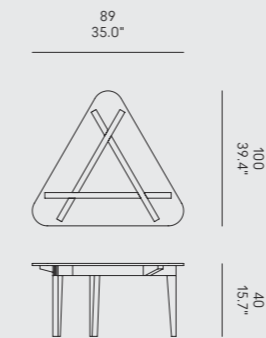
<u>Finitura</u> › metallo nero bianco	<u>Finish</u> › metal black white	<u>Finition</u> › métal noir blanc	<u>Ausführung</u> › Metall Schwarz Weiß	<u>Acabado</u> › metal negro blanco
<u>Optional</u> › cuscino indoor › cuscino outdoor	<u>Optional</u> › indoor cushion › outdoor cushion	<u>Optionnel</u> › coussin indoor › coussin outdoor	<u>Optional</u> › Indoor-Kissen › Outdoor-Kissen	<u>Opcional</u> › cojín indoor › cojín outdoor



Autoreggente Tavolino

HORM / Patrizia Bertolini, 2016

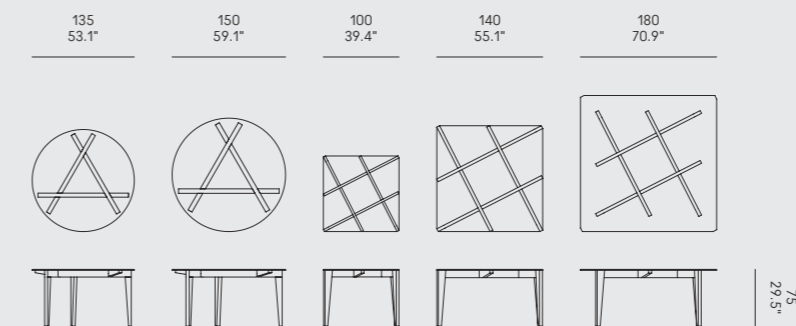
<u>Struttura</u> › legno massello noce canaletto	<u>Structure</u> › solid wood walnut	<u>Structure</u> › bois massif noyer	<u>Struktur</u> › Massivholz Nussbaum	<u>Estructura</u> › madera maciza nogal
<u>Piano</u> › vetro extraclear	<u>Top</u> › extraclear glass	<u>Plateau</u> › verre extra-clair	<u>Tischplatte</u> › extraklares Glas	<u>Tablero</u> › vidrio extraclaro



Autoreggente Tavolo

HORM / Patrizia Bertolini, 2013

<u>Struttura</u> › legno massello rovere naturale noce canaletto	<u>Structure</u> › solid wood natural oak walnut	<u>Structure</u> › bois massif chêne naturel noyer	<u>Struktur</u> › Massivholz Eiche Natur Nussbaum	<u>Estructura</u> › madera maciza roble natural nogal
<u>Piano</u> › vetro extraclear	<u>Top</u> › extraclear glass	<u>Plateau</u> › verre extra-clair	<u>Tischplatte</u> › extraklares Glas	<u>Tablero</u> › vidrio extraclaro



Basamento

> cemento
finitura naturale
all'esterno, verniciato
lucido all'interno

Base

> concrete
natural finish on
the outside, glossy
painted on the inside

Base

> béton
finition naturelle à
l'extérieur, laqué
brillant à l'intérieur

Basis

> Beton
in Natur Finish auf der
Außenseite, innerhalb
glänzend beschichtet

Base

> hormigón
acabado natural en
el exterior, barnizado
brillante en el interior

Piano

> noce canaletto
> rovere moca

Top

> walnut
> mocha oak

Plateau

> noyer
> chêne moka

Tischplatte

> Nussbaum
> Eiche Mokka

Tablero

> nogal
> roble moca

> marmo

Marquina
Emperador

> marble

Marquina
Emperador

> marbre

Marquina
Emperador

> Marmor

Marquina
Emperador

> mármol

Marquina
Emperador

Optional

> Lazy Susan
Fenix-NTM® nero

Optional

> Lazy Susan
black Fenix-NTM®

Optionnel

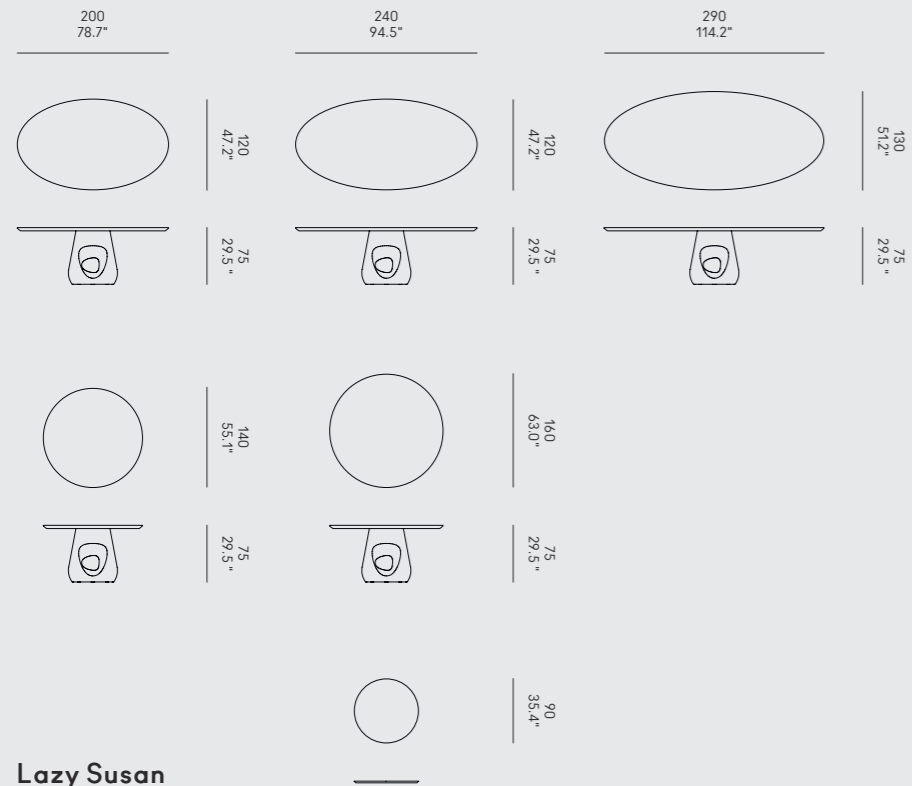
> Lazy Susan
Fenix-NTM® noir

Optional

> Lazy Susan
Schwarz Fenix-NTM®

Opcional

> Lazy Susan
Fenix-NTM® negro



Lazy Susan

Struttura

> metallo cromato

Structure

> chromed metal

Structure

> métal chromé

Struktur

> verchromtes Metall

Estructura

> metal cromado

Seduta

> midollino naturale

Seat

> natural wicker

Assise

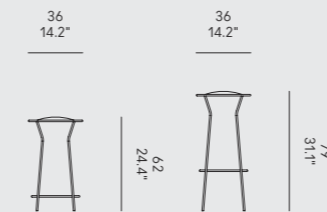
> osier naturel

Sitz

> Peddigrohr natur

Asiento

> mimbre natural



Bek

Struttura

> metallo
nero
bianco

Structure

> metal
black
white

Structure

> métal
noir
blanc

Struktur

> Metall
Schwarz
Weiß

Estructura

> metal
negro
blanco

Seduta e schienale

> polipropilene
nero
bianco

Seat and backrest

> polypropylene
black
white

Assise et dossier

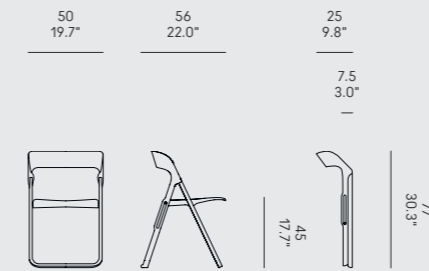
> polypropylène
noir
blanc

Sitz und Rückenlehne

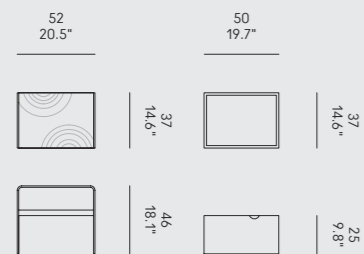
> Polypropylen
Schwarz
Weiß

Asiento y respaldo

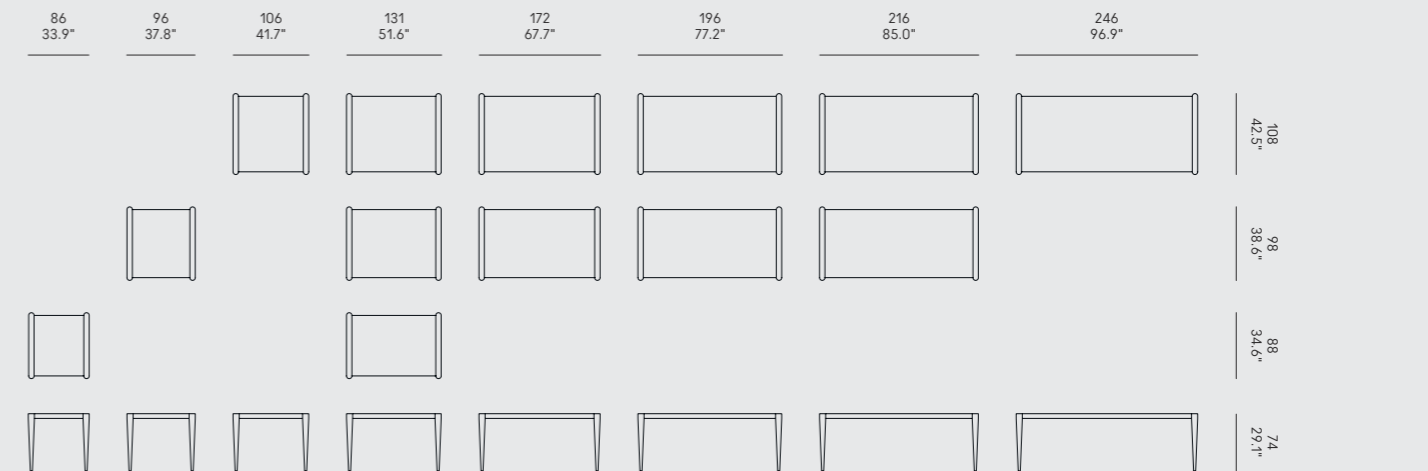
> polipropileno
negro
blanco



<u>Struttura</u> › vetro extraclear	<u>Structure</u> › extraclear glass	<u>Structure</u> › verre extra-clair	<u>Struktur</u> › extraklares Glas	<u>Estructura</u> › vidrio extraclaro
<u>Ripiano</u> › multistrato di noce canaletto, mogano, ciliegio, rovere e frassino	<u>Shelf</u> › walnut, mahogany, cherry, oak and ash plywood	<u>Étagère</u> › bois massif contre-plaqué dans noyer, acajou, cerisier, chêne et frêne	<u>Einlegeböden</u> › Multiplex aus Nussbaum, Mahagoni, Kirsche, Eiche und Esche	<u>Repisa</u> › multicapa de nogal, caoba, cerezo, roble y fresno
<u>Cestone opzionale</u> › noce canaletto	<u>Optional drawer</u> › walnut	<u>Tiroir optionnel</u> › noyer	<u>Optionale Schublade</u> › Nussbaum	<u>Cajón opcional</u> › nogal
<u>Frontali del cestone</u> › frontale 1: laccato opaco bianco › frontale 2: noce canaletto	<u>Fronts of the drawer</u> › front 1: white matt lacquered › front 2: walnut	<u>Façades du tiroir</u> › façade 1: laqué mat blanc › façade 2: noyer	<u>Schubladenfronten</u> › Front 1: weiß matt lackiert › Front 2: Nussbaum	<u>Frentes del cajón</u> › frente 1: lacado mate blanco › frente 2: nogal

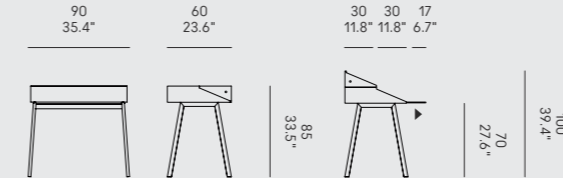


<u>Gambe</u> › metallo nero › bianco	<u>Legs</u> › metal black › white	<u>Pieds</u> › métal noir › blanc	<u>Beine</u> › Metall Schwarz › Weiß	<u>Patas</u> › metal negro › blanco
<u>Piano</u> › Fenix-NTM® nero › Fenix-NTM® bianco › Fenix-NTA® acciaio Hamilton	<u>Top</u> › black Fenix-NTM® › white Fenix-NTM® › Hamilton steel Fenix-NTA®	<u>Plateau</u> › Fenix-NTM® noir › Fenix-NTM® blanc › Fenix-NTA® acier Hamilton	<u>Tischplatte</u> › Schwarz Fenix-NTM® › Weiß Fenix-NTM® › Hamilton Stahl Fenix-NTA®	<u>Tablero</u> › Fenix-NTM® negro › Fenix-NTM® blanco › Fenix-NTA® acero Hamilton
<u>Terminali</u> › rovere naturale › noce canaletto	<u>Ends</u> › natural oak › walnut	<u>Extrémités</u> › chêne naturel › noyer	<u>Tischenden</u> › Eiche Natur › Nussbaum	<u>Terminales</u> › roble natural › nogal
<u>Nota</u> Il Fenix-NTA® acciaio Hamilton è disponibile solo per alcune misure e solo per le gambe in metallo nero.	<u>Notice</u> The Fenix-NTA® Hamilton steel finish is available only for some measures and only for the black metal legs.	<u>Avertissement</u> La finition Fenix-NTA® acier Hamilton n'est disponible que pour certaines mesures et uniquement pour les pieds en métal noir.	<u>Anmerkungen</u> Die Fenix-NTA® Hamilton Stahl Oberfläche ist nur für einige Maße und nur mit schwarzen Metallbeine erhältlich.	<u>Aviso</u> El acabado de Fenix-NTA® acero Hamilton está disponible sólo para algunas medidas y sólo para las patas de metal negro.



<u>Gambe</u> > metallo nero bianco	<u>Legs</u> > metal black white	<u>Pieds</u> > métal noir blanc	<u>Beine</u> > Metall Schwarz Weiß	<u>Patas</u> > metal negro blanco
<u>Piano e allunghe</u> > Fenix-NTM® nero > Fenix-NTM® bianco > Fenix-NTA® acciaio Hamilton	<u>Top and extensions</u> > black Fenix-NTM® > white Fenix-NTM® > Hamilton steel Fenix-NTA®	<u>Plateau et rallonges</u> > Fenix-NTM® noir > Fenix-NTM® blanc > Fenix-NTA® acier Hamilton	<u>Tischplatte und Verlängerungen</u> > Schwarz Fenix-NTM® > Weiß Fenix-NTM® > Hamilton Stahl Fenix-NTA®	<u>Tablero y extensiones</u> > Fenix-NTM® negro > Fenix-NTM® blanco > Fenix-NTA® acero Hamilton
<u>Terminali</u> > rovere naturale > noce canaletto	<u>Ends</u> > natural oak > walnut	<u>Extrémités</u> > chêne naturel > noyer	<u>Tischenden</u> > Eiche Natur > Nussbaum	<u>Terminales</u> > roble natural > nogal
<u>Nota</u> Il Fenix-NTA® acciaio Hamilton è disponibile solo per alcune misure e solo per le gambe in metallo nero.	<u>Notice</u> The Fenix-NTA® Hamilton steel finish is available only for some measures and only for the black metal legs.	<u>Avertissement</u> La finition Fenix-NTA® acier Hamilton n'est disponible que pour certaines mesures et uniquement pour les pieds en métal noir.	<u>Anmerkungen</u> Die Fenix-NTA® Hamilton Stahl Oberfläche ist nur für einige Maße und nur mit schwarzen Metallbeine erhältlich.	<u>Aviso</u> El acabado de Fenix-NTA® acero Hamilton está disponible sólo para algunas medidas y sólo para las patas de metal negro.

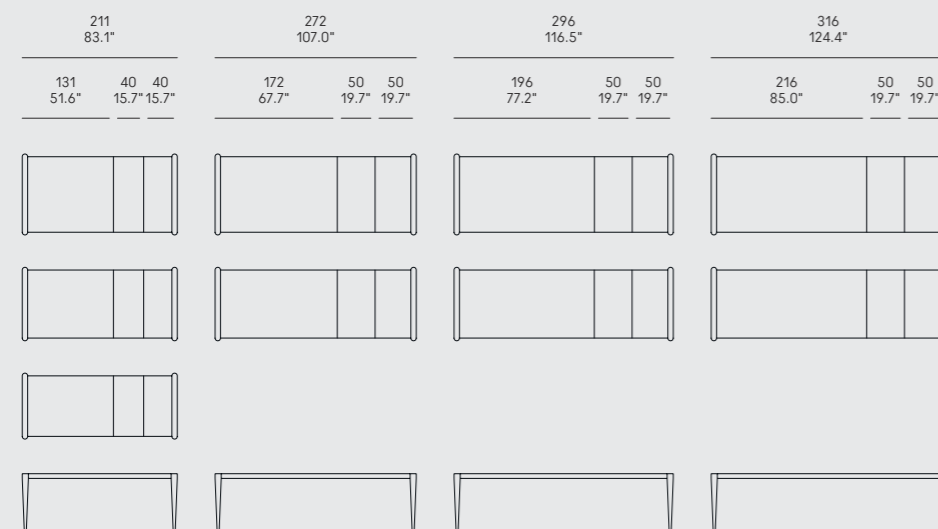
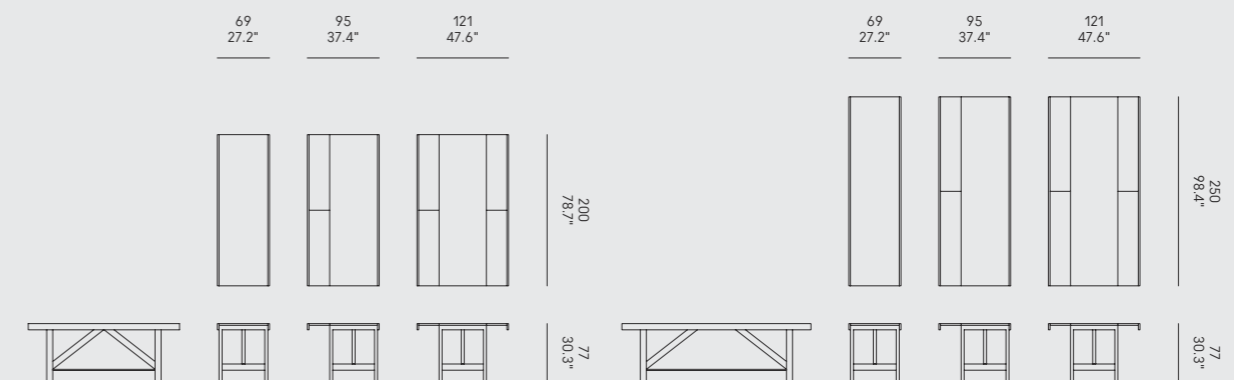
<u>Gambe</u> > legno massello noce canaletto	<u>Legs</u> > solid wood walnut	<u>Pieds</u> > bois massif noyer	<u>Beine</u> > Massivholz Nussbaum	<u>Patas</u> > madera maciza nogal
<u>Scrittoio</u> > laccato opaco nero bianco polvere beige rosso vino bruno grafite	<u>Desk</u> > matt lacquered black white dusty grey beige grey wine red brown grey graphite	<u>Écritoire</u> > laqué mat noir blanc gris poussière gris beige rouge vin gris brun graphite	<u>Schreibtisch</u> > matt lackiert Schwarz Weiß Staubgrau Beigegräu Weinrot Braungrau Graphit	<u>Escritorio</u> > lacado mate negro blanco gris polvo gris beige rojo vino gris parduzco grafito



Capriata

CASAMANIA / Carlo Cumini, 1997

<u>Gambe</u> > legno massello rovere naturale rovere moca	<u>Legs</u> > solid wood natural oak mocha oak	<u>Pieds</u> > bois massif chêne naturel chêne moka	<u>Beine</u> > Massivholz Eiche Natur Eiche Mokka	<u>Patas</u> > madera maciza roble natural roble moca
<u>Piano</u> > rovere naturale > rovere moca	<u>Top</u> > natural oak > mocha oak	<u>Plateau</u> > chêne naturel > chêne moka	<u>Tischplatte</u> > Eiche Natur > Eiche Mokka	<u>Tablero</u> > roble natural > roble moca



Struttura

- › legno massello
- frassino nero
- frassino beige

Structure

- › solid wood
- black ash
- beige grey ash

Structure

- › bois massif
- frêne noir
- frêne gris beige

Struktur

- › Massivholz
- Esche Schwarz
- Esche Beigegrau

Estructura

- › madera maciza
- fresno negro
- fresno gris beige

Rivestimento

- › tessuto
- › pelle
- › ecopelle

Cover

- › fabric
- › leather
- › faux leather

Revêtement

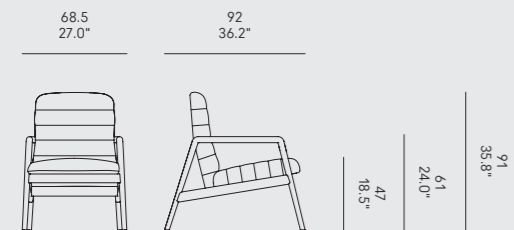
- › tissu
- › cuir
- › similcuir

Bezug

- › Stoff
- › Leder
- › Kunstleder

Funda

- › tejido
- › piel
- › ecopiel

ChariotBianco

- › telaio in metallo verniciato nero
- › vassoi e ruote in rovere bianco

ChariotWhite

- › black painted metal frame
- › trays and wheels in white oak

ChariotBlanc

- › cadre en métal verni noir
- › plateaux et roues en chêne blanc

ChariotWeiß

- › schwarz beschichteter Metallrahmen
- › Tablett und Räder aus Weißeiche

ChariotBlanco

- › marco de metal pintado de negro
- › bandejas y ruedas en roble blanco

ChariotNaturale

- › telaio in metallo verniciato nero
- › vassoi e ruote in rovere naturale

ChariotNatural

- › black painted metal frame
- › trays and wheels in natural oak

ChariotNaturel

- › cadre en métal verni noir
- › plateaux et roues en chêne naturel

ChariotNatur

- › schwarz beschichteter Metallrahmen
- › Tablett und Räder aus Natureiche

ChariotNatural

- › marco de metal pintado de negro
- › bandejas y ruedas en roble natural

ChariotMoca

- › telaio in metallo verniciato oro
- › vassoi e ruote in rovere moca

ChariotMocha

- › gold painted metal frame
- › trays and wheels in mocha oak

ChariotMoka

- › cadre en métal verni or
- › plateaux et roues en chêne moka

ChariotMokka

- › gold beschichteter Metallrahmen
- › Tablett und Räder aus Mokkaeiche

ChariotMoca

- › marco de metal pintado de oro
- › bandejas y ruedas en roble moca

ChariotRosso Fluo

- › telaio in metallo, vassoi e ruote in MDF, laccati opaco in Ral 3026 (rosso chiaro brillante)

ChariotFluo Red

- › metal frame, and MDF trays & wheels lacquered in Ral 3026 (luminous bright red)

ChariotRouge Fluo

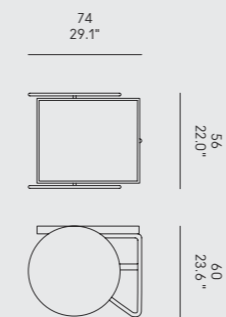
- › cadre en métal, plateaux et roues en MDF, laqués mat en Ral 3026 (rouge clair brillant)

ChariotFluorot

- › Metallrahmen und MDF-Tablett & Räder matt lackiert in Ral 3026 (leuchthellrot)

ChariotRojo Fluo

- › marco de metal, bandejas y ruedas de MDF, lacados mate en Ral 3026 (rojo claro brillante)



Struttura

› metallo bianco

Structure

› white metal

Structure

› métal blanc

Struktur

› weißes Metall

Estructura

› metal blanco

Rivestimento

› midollino naturale

Cover

› natural wicker

Revêtement

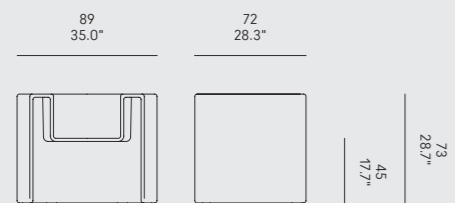
› osier naturel

Bezug

› Peddigrohr natur

Funda

› mimbre natural



Finitura

› faggio laccato opaco
nero
bianco
polvere
beige
rosso vino
bruno
grafite

Finish

› matt lacquered beech
black
white
dusty grey
beige grey
wine red
brown grey
graphite

Finition

› hêtre laqué mat
noir
blanc
gris poussière
gris beige
rouge vin
gris brun
graphite

Ausführung

› matt lackiert Buche
Schwarz
Weiß
Staubgrau
Beigegrau
Weinrot
Braungrau
Graphit

Acabado

› haya lacado mate
negro
blanco
gris polvo
gris beige
rojo vino
gris parduzco
grafito

› faggio verniciato
poro aperto
naturale
imbiancato
moca
beige
rosso vino
bruno

› beech varnished
open-pore
natural
whitened
moca
beige grey
wine red
brown grey

› hêtre verni
à pores ouverts
naturel
blanchi
moka
gris beige
rouge vin
gris brun

› Buche offenporig
beschichtet
Natur
Geweißt
Mokka
Beigegrau
Weinrot
Braungrau

› haya barnizada
poro abierto
natural
blanqueada
moca
gris beige
rojo vino
gris parduzco

› faggio grezzo

› raw beech

› hêtre brut

› Buche roh

› haya cruda

Nota

Nella finitura faggio grezzo, il cliente può colorare la sedia secondo le proprie esigenze. Ma è importante specificare se la si vuole verniciare a poro aperto o laccare.

Notice

In the raw beech finish, you can colour the chair as you wish. But it is important to specify if you want to varnish open pore or lacquer the chair.

Avertissement

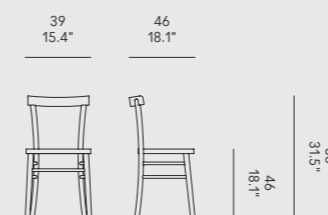
En finition hêtre brut, le client peut colorer la chaise selon ses envies. Mais il est important de préciser s'il souhaite la faire vernir à pores ouverts ou la laquer.

Anmerkungen

Der Stuhl ist aus rohem Buchenholz und kann vom Kunden nach Wunsch gefärbt werden. Es ist jedoch wichtig anzugeben, ob sie offenporig beschichtet oder matt lackiert werden soll.

Aviso

En el acabado en madera de haya cruda, el cliente puede pintar la silla según sus preferencias. Sin embargo, es importante especificar si la desea barnizada poro abierto o lacada.



Finitura

› faggio laccato opaco
rosa
azzurro

Finish

› matt lacquered beech
pink
light blue

Finition

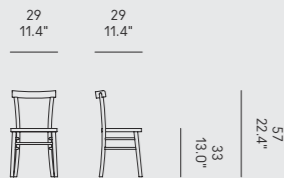
› hêtre laqué mat
rose
bleu clair

Ausführung

› matt lackiert Buche
Hellrosa
Lichtblau

Acabado

› haya lacada mate
rosa
azul luminoso



Elfo

Indoor

› tessuto indoor
› ecopelle

Indoor

› fabric indoor
› faux leather

Indoor

› tissu indoor
› similcuir

Indoor

› Indoor-Stoff
› Kunstleder

Indoor

› tejido indoor
› ecopiel

Outdoor (A)

› imbottitura drenante
› tessuto outdoor

Outdoor (A)

› draining padding
› outdoor fabric

Outdoor (A)

› rembourrage drainant
› tissu outdoor

Outdoor (A)

› Drainagepolsterung
› Outdoor-Stoff

Outdoor (A)

› relleno drenante
› tejido outdoor



A



Flower

FlowerNero / Noce

› gambe:
noce massello
› piano:
Fenix-NTM® nero
› allunga:
Fenix-NTM® nero
+ noce canaletto
› base:
marmo Marquina

FlowerBlack / Walnut

› legs:
solid walnut
› top:
black Fenix-NTM®
› extension:
black Fenix-NTM®
+ walnut
› base:
Marquina marle

FlowerNoir / Noyer

› pieds:
noyer massif
› plateau:
Fenix-NTM® noir
› rallonge:
Fenix-NTM® noir
+ noyer
› base:
marbre Marquina

FlowerSchwarz / Nussbaum

› Beine:
Nussholz
› Tischplatte:
Schwarz Fenix-NTM®
› Verlängerung:
Schwarz Fenix-NTM®
+ Nussbaum
› Basis:
Marmor Marquina

FlowerNegro / Nogal

› patas:
nogal macizo
› Tablero:
Fenix-NTM® negro
› extensión:
Fenix-NTM® negro
+ nogal
› base:
mármol Marquina

FlowerBianco / Noce

› gambe:
noce massello
› piano:
Fenix-NTM® bianco
› allunga:
Fenix-NTM® bianco
+ noce canaletto
› base:
marmo Carrara

FlowerWhite / Walnut

› legs:
solid walnut
› top:
white Fenix-NTM®
› extension:
white Fenix-NTM®
+ walnut
› base:
Carrara marble

FlowerBlanc / Noyer

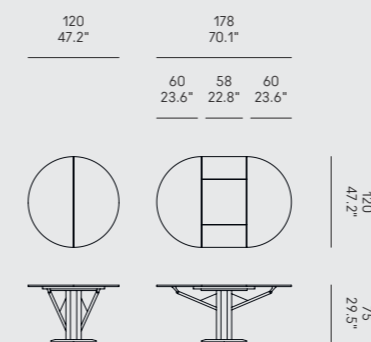
› pieds:
noyer massif
› plateau:
Fenix-NTM® blanc
› rallonge:
Fenix-NTM® blanc
+ noyer
› base:
marbre Carrara

FlowerWeiß / Nussbaum

› Beine:
Nussholz
› Tischplatte:
Weiß Fenix-NTM®
› Verlängerung:
Weiß Fenix-NTM®
+ Nussbaum
› Basis:
Marmor Carrara

FlowerBlanco / Nogal

› patas:
nogal macizo
› Tablero:
Fenix-NTM® blanco
› extensión:
Fenix-NTM® blanco
+ nogal
› base:
mármol Carrara



Struttura

› legno massello
noce canaletto

Structure

› solid wood
walnut

Structure

› bois massif
noyer

Struktur

› Massivholz
Nussbaum

Estructura

› madera maciza
nogal

Rivestimento

› tessuto
› pelle
› ecopelle

Cover

› fabric
› leather
› faux leather

Revêtement

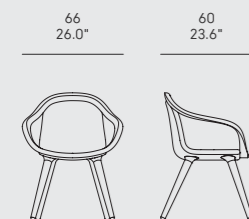
› tissu
› cuir
› similcuir

Bezug

› Stoff
› Leder
› Kunstleder

Funda

› tejido
› piel
› ecopiel

66
26.0"60
23.6"44
17.3"65
25.6"84
33.1"

Giro Pouf

Rivestimento

› tessuto
› pelle
› ecopelle

Cover

› fabric
› leather
› faux leather

Revêtement

› tissu
› cuir
› similcuir

Bezug

› Stoff
› Leder
› Kunstleder

Funda

› tejido
› piel
› ecopiel

Nota

Disponibile con
piedini o ruote.

Notice

Available with feet
or wheels.

Avertissement

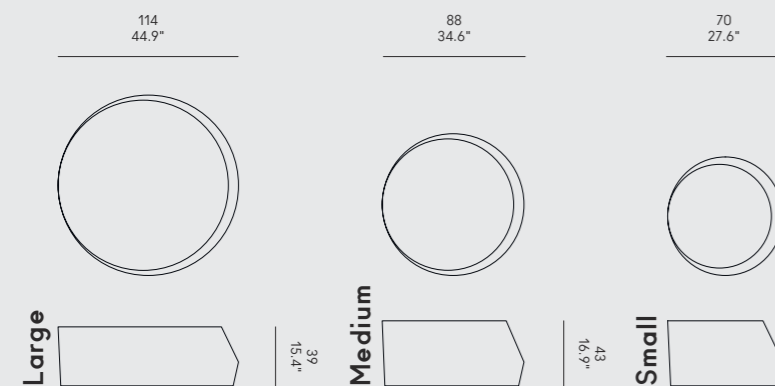
Disponible avec pieds
ou roulettes.

Anmerkungen

Erhältlich mit Füßen
oder Rollen.

Aviso

Disponibile con patas
o ruedecillas.

114
44.9"88
34.6"70
27.6"

Large

39
15.4"

Medium

43
16.9"

Small

43
16.9"

Giro Tavolino

Rivestimento

› tessuto
› pelle
› ecopelle

Cover

› fabric
› leather
› faux leather

Revêtement

› tissu
› cuir
› similcuir

Bezug

› Stoff
› Leder
› Kunstleder

Funda

› tejido
› piel
› ecopiel

Piano

› rovere massello

Top

› solid oak

Plateau

› chêne massif

Tischplatte

› Massiv Eiche

Tablero

› roble macizo

Nota

Disponibile con
piedini o ruote.

Notice

Available with feet or
wheels.

Avertissement

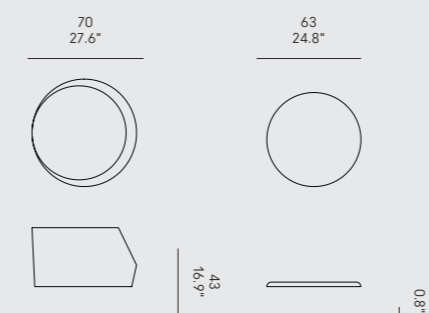
Disponible avec pieds
ou roulettes.

Anmerkungen

Erhältlich mit Füßen
oder Rollen.

Aviso

Disponibile con patas
o ruedecillas.

70
27.6"63
24.8"43
16.9"2
0.8"

Hexagon

Finitura

› pietra leccese

Finish

› Lecce limestone

Finition

› pierre de Lecce

Ausführung

› Lecce-Stein

Acabado

› piedra de Lecce

› okumé naturale

› okumé laccato
opaco bianco

› natural okoume

› white matt lacquered
okoume

› okumé naturel

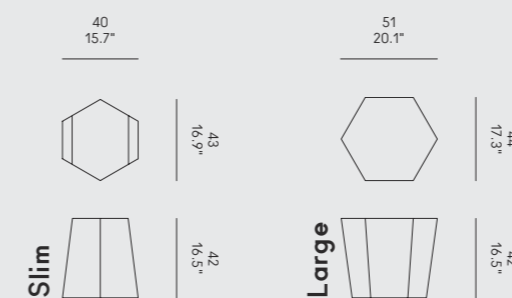
› okumé laqué mat
blanc

› Okume Natur

› weiß matt lackiert
Okume

› ocume natural

› ocume lacado mate
blanco

40
15.7"51
20.1"43
16.9"44
17.3"

Slim

42
16.5"

Large

42
16.5"

<u>Finitura</u> › polietilene lucido	<u>Finish</u> › glossy polyethylene	<u>Finition</u> › polyéthylène brillant	<u>Ausführung</u> › glänzend Polyethylen	<u>Acabado</u> › polietileno brillante
nero RAL 9011	black RAL 9011	noir RAL 9011	Schwarz RAL 9011	negro RAL 9011
bianco RAL 9016	white RAL 9016	blanc RAL 9016	Weiß RAL 9016	blanco RAL 9016
polvere RAL 7037	dusty grey RAL 7037	gris poussière RAL 7037	Staubgrau RAL 7037	gris polvo RAL 7037
beige RAL 7006	beige grey RAL 7006	gris beige RAL 7006	Beigegräu RAL 7006	gris beige RAL 7006
rosso vino RAL 3005	wine red RAL 3005	rouge vin RAL 3005	Weinrot RAL 3005	rojo vino RAL 3005
grafite RAL 7024	graphite RAL 7024	graphite RAL 7024	Graphit RAL 7024	grafito RAL 7024
oro perlato RAL 1036	pearl gold RAL 1036	or nacré RAL 1036	Perlgold RAL 1036	oro perlado RAL 1036
rosso arancio chiaro RAL 2008	bright red orange RAL 2008	orangé rouge clair RAL 2008	Hellrotorange RAL 2008	rojo claro anaranjado RAL 2008
violetto perlato RAL 4011	pearl violet RAL 4011	violet nacré RAL 4011	Perlviolett RAL 4011	violeta perlado RAL 4011
blu oltremare RAL 5002	ultramarine blue RAL 5002	bleu outremer RAL 5002	Ultramarinblau RAL 5002	azul ultramar RAL 5002
blu acqua RAL 5021	water blue RAL 5021	bleu d'eau RAL 5021	Wasserblau RAL 5021	azul agua RAL 5021
blu notte perlato RAL 5026	pearl night blue RAL 5026	bleu nuit nacré RAL 5026	Perlnachtblau RAL 5026	azul noche perlado RAL 5026

Nota

Disponibile anche in colori su richiesta cliente (scala Ral o Pantone).

Notice

Also available in colours on request (Ral or Pantone scale).

Avertissement

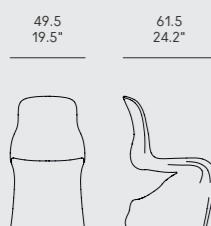
Egalement disponible en couleurs sur demande (échelle Ral ou Pantone).

Anmerkungen

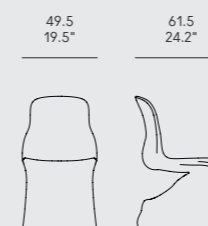
Auf Anfrage auch in Farben erhältlich (Ral- oder Pantoneskala).

Aviso

También disponible en colores bajo pedido (escala Ral o Pantone).



<u>Finitura</u> › polietilene opaco finto in massa	<u>Finish</u> › dyed-through matt polyethylene	<u>Finition</u> › polyéthylène mat teinté en mass	<u>Ausführung</u> › matt durchgefärbtem Polyethylen	<u>Acabado</u> › polietileno opaco teñido en masa
nero bianco polvere beige	black white dusty grey beige grey	noir blanc gris poussière gris beige	Schwarz Weiß Staubgräu Beigegräu	negro blanco gris polvo gris beige



Gambe e cassetto
› noce canaletto

Legs and drawer
› walnut

Pieds et tiroir
› noyer

Beine und Schublade
› Nussbaum

Patas y cajón
› nogal

Piano e un frontale cassetto
› laccato opaco

nero
bianco
polvere
beige
rosso vino
bruno
grafite

Top and a front of the drawer
› matt lacquered

black
white
dusty grey
beige grey
wine red
brown grey
graphite

Plateau et une façade du tiroir
› laqué mat

noir
blanc
gris poussière
gris beige
rouge vin
gris brun
graphite

Tischplatte und eine Front der Schublade
› matt lackiert

Schwarz
Weiß
Staubgrau
Beigegrü
Weinrot
Braungrü
Graphit

Tablero y un frente del cajón
› lacado mate

negro
blanco
gris polvo
gris beige
rojo vino
gris parduzco
grafito

40
15.7"



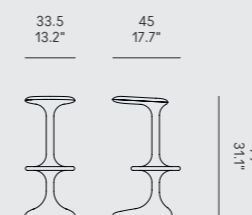
Finitura
› polipropilene
nero
bianco

Finish
› polypropylene
black
white

Finition
› polypropylène
noir
blanc

Ausführung
› Polypropylen
Schwarz
Weiß

Acabado
› polipropileno
negro
blanco



J – Table

HORM / Jean Francois Gomrée, 2004

Gamba libreria
› rovere naturale
› noce canaletto

Bookcase leg
› natural oak
› walnut

Pied bibliothèque
› chêne naturel
› noyer

Bein des Bücherregales
› Eiche Natur
› Nussbaum

Pata librería
› roble natural
› nogal

Piano e gamba
› laminato bianco

Top and leg
› white laminate

Plateau et pied
› laminé blanc

Tischplatte und Bein
› Weiß Laminat

Tablero y pata
› laminado blanco

140 180 250
55.1" 70.9" 98.4"



Kant Lift

CASAMANIA / Karim Rashid, 2006

Sgabello girevole con alzata a gas

Gas-lift swivel stool

Tabouret pivotant à vérin à gaz

Gasfeder-Barhocker

Taburete giratorio con elevador de gas

Struttura
› polipropilene
nero
bianco

Structure
› polypropylene
black
white

Structure
› polypropylène
noir
blanc

Struktur
› Polypropylen
Schwarz
Weiß

Estructura
› polipropileno
negro
blanco

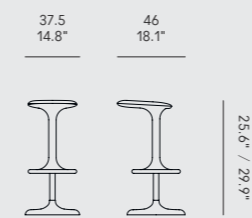
Base e poggiapiedi
› alluminio

Base and footrest
› aluminium

Base et repose-pieds
› aluminium

Basis und Fußstütze
› Aluminium

Base y reposapiés
› aluminio



Finitura

> frassino
nero
bianco

> noce canaletto

Finish

> ash
black
white

> walnut

Finition

> frêne
noir
blanc

> noyer

Ausführung

> Esche
Schwarz
Weiß

> Nussbaum

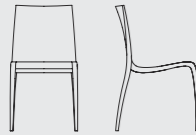
Acabado

> fresno
negro
blanco

> nogal

43
16.9"

54
21.3"



83
32.7"
45
17.7"

Rivestimento

liscio o trapuntato
> tessuto
> pelle
> ecopelle

Cuciture

> in tinta
> colorate
(vedi pagina 270)

Plain or Quilted

Cover
> fabric
> leather
> faux leather

Stitches

> matching the fabric
> coloured
(see page 270)

Revêtement

lisse ou matelassé
> tissu
> cuir
> similcuir

Coutures

> assorties
> colorées
(voir page 270)

Glatter oder gesteppter Bezug

> Stoff
> Leder
> Kunstleder

Nähte

> Ton-in-Ton
> gefärbte
(auf Seite 270)

Funda

lisa o acolchada
> tejido
> piel
> ecopiel

Costuras

> combinadas
> coloradas
(a página 270)

66
26.0"

55
21.7"



48
18.9"
47
20.3"
75
29.5"

Finitura

> frassino massello
tinto rovere
moca
beige

Finish

> solid ash
oak-stained
mocha
beige grey

Finition

> frêne massif
teinté chêne
moka
gris beige

Ausführung

> Massiv Escheholz
gefärbt Eiche
Mokka
Beigegrau

Acabado

> fresno macizo
teñido roble
moca
gris beige

Rivestimento

liscio o trapuntato
> tessuto
> pelle
> ecopelle

Cuciture

> in tinta
> colorate
(vedi pagina 270)

Plain or Quilted

Cover
> fabric
> leather
> faux leather

Stitches

> matching the fabric
> coloured
(see page 270)

Revêtement

lisse ou matelassé
> tissu
> cuir
> similcuir

Coutures

> assorties
> colorées
(voir page 270)

Glatter oder gesteppter Bezug

> Stoff
> Leder
> Kunstleder

Nähte

> Ton-in-Ton
> gefärbte
(auf Seite 270)

Funda

lisa o acolchada
> tejido
> piel
> ecopiel

Costuras

> combinadas
> coloradas
(a página 270)

38
15.0"

40
15.7"



86
33.9"
45
17.7"

51
20.1"

55
21.7"



48
18.9"
75
29.5"

Struttura

› metallo nero

Structure

› black metal

Structure

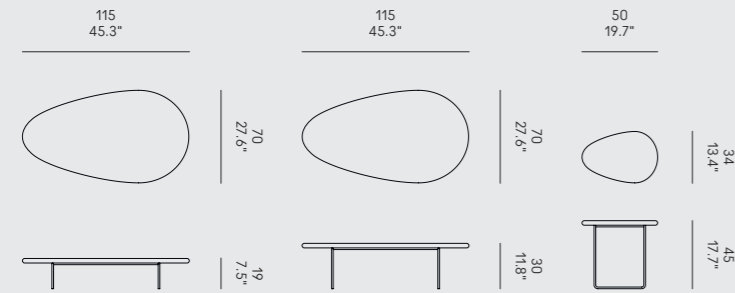
› métal noir

Struktur

› schwarzes Metall

Estructura

› metal negro

Piano› legno massello
rovere naturale
noce canalettoTop› solid wood
natural oak
walnutPlateau› bois massif
chêne naturel
noyerTischplatte› Massivholz
Eiche Natur
NussbaumTablero› madera maciza
roble natural
nogalmarmoMarquina
Carrara
EmperadormarbleMarquina
Carrara
EmperadormarbreMarquina
Carrara
EmperadorMarmorMarquina
Carrara
EmperadormármolMarquina
Carrara
EmperadorGambe

› metallo nero

Legs

› black metal

Pieds

› métal noir

Beine

› schwarzes Metall

Patas

› metal negro

Piano

› frassino moca

Top

› mocha ash

Plateau

› frêne moka

Tischplatte

› Esche Mokka

Tablero

› fresno moca

Allunga

› ceramica grigia

Extension

› grey ceramic

Rallonge

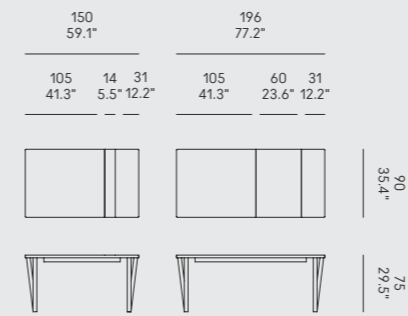
› céramique grise

Verlängerung

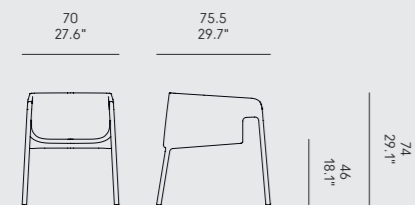
› graue Keramik

Alargue

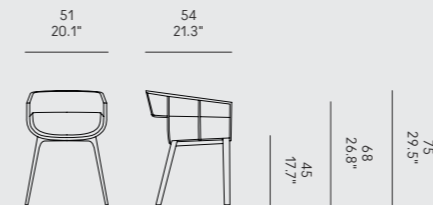
› cerámica gris



Lobby

Rivestimento› tessuto
› pelle
› ecopelleCover› fabric
› leather
› faux leatherRevêtement› tissu
› cuir
› similcuirBezug› Stoff
› Leder
› KunstlederFunda› tejido
› piel
› ecopiel

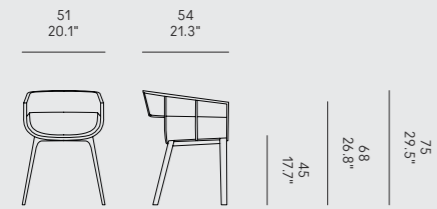
Maritime Imbottita

Finitura› rovere
naturale
moca
beigeFinish› oak
natural
mocha
beige greyFinition› chêne
naturel
moka
gris beigeAusführung› Eiche
Natur
Mokka
BeigegrauAcabado› roble
natural
moca
gris beigeRivestimento› tessuto
› pelle
› ecopelleCover› fabric
› leather
› faux leatherRevêtement› tissu
› cuir
› similcuirBezug› Stoff
› Leder
› KunstlederFunda› tejido
› piel
› ecopiel

<u>Finitura</u> › rovere	<u>Finish</u> › oak	<u>Finition</u> › chêne	<u>Ausführung</u> › Eiche	<u>Acabado</u> › roble
naturale	natural	naturel	Natur	natural
moca	mocha	moka	Mokka	moca
beige	beige grey	gris beige	Beigegrau	gris beige

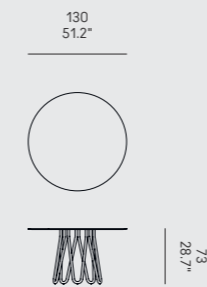
<u>Gambe</u> › metallo verniciato	<u>Legs</u> › painted metal	<u>Pieds</u> › métal verni	<u>Beine</u> › beschichtetes Metall	<u>Patas</u> › metal pintado
nero	black	noir	Schwarz	negro
bianco	white	blanc	Weiß	blanco
bronzetto antico	bronze antique	bronze antique	Vintage Bronze	bronce antiguo

<u>Piano</u> › rovere naturale	<u>Top</u> › natural oak	<u>Plateau</u> › chêne naturel	<u>Tischplatte</u> › Eiche Natur	<u>Tablero</u> › roble natural
› rovere moca	› moka oak	› chêne moka	› Eiche Mokka	› roble moca
› rovere bianco	› white oak	› chêne blanc	› Eiche Weiß	› roble blanco
› noce canaletto	› walnut	› noyer	› Nussbaum	› nogal
› marmo	› marble	› marbre	› Marmor	› mármol
Marquina	Marquina	Marquina	Marquina	Marquina
Carrara	Carrara	Carrara	Carrara	Carrara
Emperador	Emperador	Emperador	Emperador	Emperador
› vetro fumè	› smoky glass	› verre fumé	› Rauchglas	› vidrio ahumado



Meduse Tavolino

<u>Finitura</u> › metallo	<u>Finish</u> › metal	<u>Finition</u> › métal	<u>Ausführung</u> › Metall	<u>Acabado</u> › metal
nero	black	noir	Schwarz	negro
bianco	white	blanc	Weiß	blanco
rosso vino	wine red	rouge vin	Weinrot	rojo vino
bruno	brown grey	gris brun	Braungrau	gris parduzco



Gambe

› legno massello
frassino tinto rovere
frassino nero
frassino beige

Legs

› solid wood
oak-stained ash
black ash
beige grey ash

Pieds

› bois massif
frêne teinté chêne
frêne noir
frêne gris beige

Beine

› Massiv Escheholz
gefärbt Eiche
Schwarz
Beigegrau

Patas

› madera maciza
fresno teñido roble
fresno negro
fresno gris beige

Rivestimento

› tessuto
› pelle
› ecopelle

Cover

› fabric
› leather
› faux leather

Revêtement

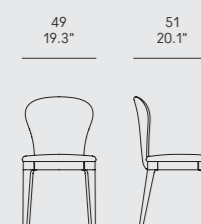
› tissu
› cuir
› similcuir

Bezug

› Stoff
› Leder
› Kunstleder

Funda

› tejido
› piel
› ecopiel

Struttura

› legno massello
frassino nero

Structure

› solid wood
black ash

Structure

› bois massif
frêne noir

Struktur

› Massivholz
Esche Schwarz

Estructura

› madera maciza
fresno negro

Seduta e schienale

› cuoio pieno fiore
naturale
grigio talpa
testa di moro
nero

Seat and backrest

› hard leather grade 1
natural
taupe
dark brown
black

Assise et dossier

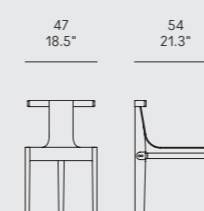
› cuir pleine fleur
naturel
taupe
brun foncé
noir

Sitz und Rückenlehne

› Kernleder
Natur
Taupe
Dunkelbraun
Schwarz

Asiento y respaldo

› cuero
natural
gris ratón
testa di moro
negro



Morfino & Morfino Pouf

Indoor

› tessuto indoor
› ecopelle

Indoor

› fabric indoor
› faux leather

Indoor

› tissu indoor
› similcuir

Indoor

› Indoor-Stoff
› Kunstleder

Indoor

› tejido indoor
› ecopiel

Outdoor (A)

› imbottitura drenante
› tessuto outdoor

Outdoor (A)

› draining padding
› outdoor fabric

Outdoor (A)

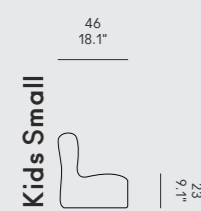
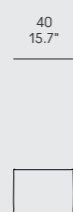
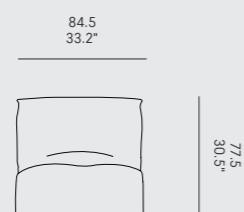
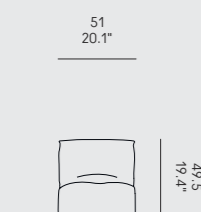
› rembourrage drainant
› tissu outdoor

Outdoor (A)

› Drainagepolsterung
› Outdoor-Stoff

Outdoor (A)

› relleno drenante
› tejido outdoor



Kids Small

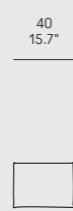


Kids Medium

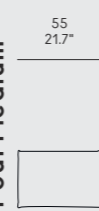
Large



Pouf Small



Pouf Medium

Indoor

› tessuto indoor
› ecopelle

Indoor

› fabric indoor
› faux leather

Indoor

› tissu indoor
› similcuir

Indoor

› Indoor-Stoff
› Kunstleder

Indoor

› tejido indoor
› ecopiel

Outdoor (A)

› imbottitura drenante
› tessuto outdoor

Outdoor (A)

› draining padding
› outdoor fabric

Outdoor (A)

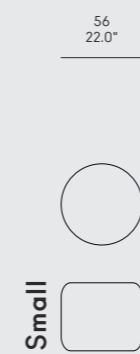
› rembourrage drainant
› tissu outdoor

Outdoor (A)

› Drainagepolsterung
› Outdoor-Stoff

Outdoor (A)

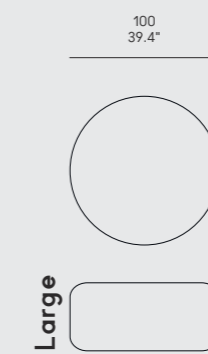
› relleno drenante
› tejido outdoor



Small



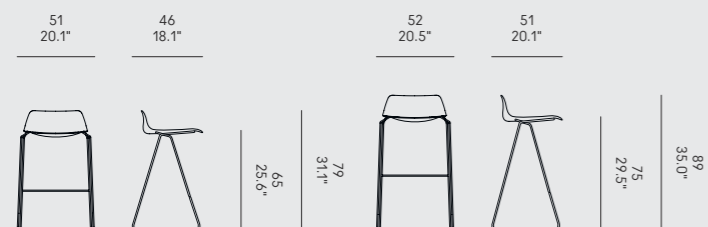
Medium



Large

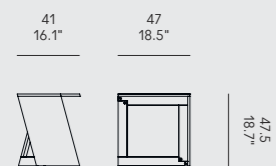


- | | | | | |
|-----------------------------------|---------------------------------|---------------------------------|-------------------------------------|----------------------------------|
| <u>Gambe</u>
› metallo
nero | <u>Legs</u>
› metal
black | <u>Pieds</u>
› métal
noir | <u>Beine</u>
› Metall
Schwarz | <u>Patas</u>
› metal
negro |
| <u>Seduta</u>
› faggio moca | <u>Seat</u>
› mocha beech | <u>Assise</u>
› hêtre moka | <u>Sitz</u>
› Buche Mokka | <u>Asiento</u>
› haya moca |



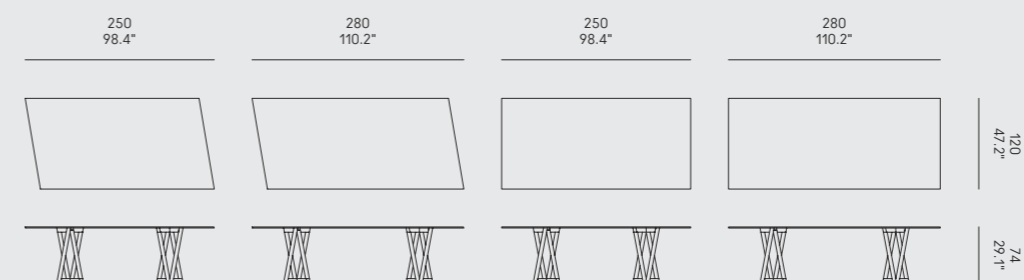
QuaDror™ 01

- | | | | | |
|---------------------------------------------------|------------------------------------------|---------------------------------------------|---------------------------------------------|------------------------------------------------|
| <u>Gambe</u>
› legno massello
frassino moca | <u>Legs</u>
› solid wood
mocha ash | <u>Pieds</u>
› bois massif
frêne moka | <u>Beine</u>
› Massivholz
Esche Mokka | <u>Patas</u>
› madera maciza
fresno moca |
| › metallo crudo | › crude metal | › métal cru | › Rohmetall | › metal crudo |
| <u>Piano</u>
› vetro extraclear | <u>Top</u>
› extraclear glass | <u>Plateau</u>
› verre extra-clair | <u>Tischplatte</u>
› extraklares Glas | <u>Tablero</u>
› vidrio extraclaro |



QuaDror™ 02

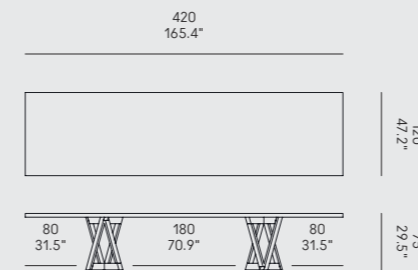
- | | | | | |
|------------------------------------|----------------------------------|---------------------------------------|------------------------------------------|---------------------------------------|
| <u>Gambe</u>
› metallo crudo | <u>Legs</u>
› crude metal | <u>Pieds</u>
› métal cru | <u>Beine</u>
› Rohmetall | <u>Patas</u>
› metal crudo |
| <u>Piano</u>
› vetro extraclear | <u>Top</u>
› extraclear glass | <u>Plateau</u>
› verre extra-clair | <u>Tischplatte</u>
› extraklares Glas | <u>Tablero</u>
› vidrio extraclaro |



QuaDror™ 03

- | | | | | |
|---------------------------------------------------|------------------------------------------|---------------------------------------------|---------------------------------------------|------------------------------------------------|
| <u>Gambe</u>
› legno massello
frassino moca | <u>Legs</u>
› solid wood
mocha ash | <u>Pieds</u>
› bois massif
frêne moka | <u>Beine</u>
› Massivholz
Esche Mokka | <u>Patas</u>
› madera maciza
fresno moca |
| › metallo crudo | › crude metal | › métal cru | › Rohmetall | › metal crudo |
| <u>Piano</u>
› frassino moca | <u>Top</u>
› mocha ash | <u>Plateau</u>
› frêne moka | <u>Tischplatte</u>
› Esche Mokka | <u>Tablero</u>
› fresno moca |
| <u>Optional</u>
› cablatura | <u>Optional</u>
› wiring | <u>Optionnel</u>
› câblage | <u>Optional</u>
› Tischverkabelung | <u>Opcional</u>
› cableaje |

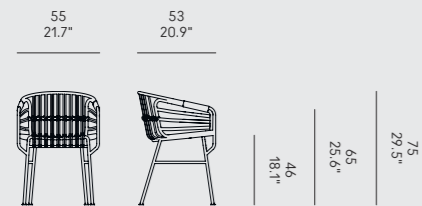
<u>Nota</u> Il top è realizzabile su misura. Massimo 420 x 135 cm.	<u>Notice</u> The top can be made to measure. Maimum 420 x 135 cm.	<u>Avertissement</u> Le plateau peut être sur mesure. Maximum 420 x 135 cm.	<u>Anmerkungen</u> Die Tischplatte kann nach Maß sein. Maximal 420 x 135 cm.	<u>Aviso</u> El tablero puede ser a medida. Máximo 420 x 135 cm.
--------------------------------------------------------------------------	--------------------------------------------------------------------------	-----------------------------------------------------------------------------------	------------------------------------------------------------------------------------	------------------------------------------------------------------------



306 Raphia *Alluminio*

CASAMANIA / LucidiPevere, 2018

<u>Finitura</u> › alluminio bianco grafite	<u>Finish</u> › metal white graphite	<u>Finition</u> › métal blanc graphite	<u>Ausführung</u> › Metall Weiß Graphit	<u>Acabado</u> › metal blanco grafito
<u>Optional</u> › cuscino indoor › cuscino outdoor	<u>Optional</u> › indoor cushion › outdoor cushion	<u>Optionnel</u> › coussin indoor › coussin outdoor	<u>Optional</u> › Indoor-Kissen › Outdoor-Kissen	<u>Opcional</u> › cojín indoor › cojín indoor

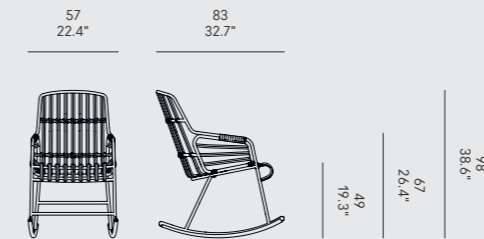


Raphia Rocking

CASAMANIA / LucidiPevere, 2014

307

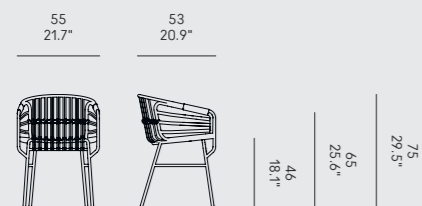
<u>Struttura</u> › metallo bianco	<u>Structure</u> › white metal	<u>Structure</u> › métal blanc	<u>Struktur</u> › weißes Metall	<u>Estructura</u> › metal blanco
<u>Seduta e schienale</u> › rattan	<u>Seat and backrest</u> › rattan	<u>Assise et dossier</u> › rotin	<u>Sitz und Rückenlehne</u> › Rattan	<u>Asiento y respaldo</u> › ratán
<u>Optional</u> › cuscino indoor	<u>Optional</u> › indoor cushion	<u>Optionnel</u> › coussin indoor	<u>Optional</u> › Indoor-Kissen	<u>Opcional</u> › cojín indoor



Raphia *Rattan*

CASAMANIA / LucidiPevere, 2013

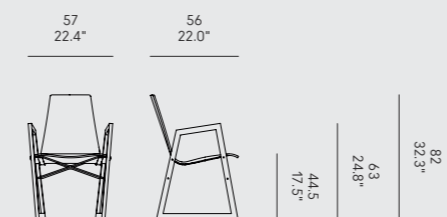
<u>Struttura</u> › metallo nero bianco polvere beige	<u>Structure</u> › metal black white dusty grey beige grey	<u>Structure</u> › métal noir blanc gris poussière gris beige	<u>Struktur</u> › Metall Schwarz Weiß Staubgrau Beigegräu	<u>Estructura</u> › metal negro blanco gris polvo gris beige
<u>Seduta e schienale</u> › rattan con legacci in nylon	<u>Seat and backrest</u> › rattan with nylon ties	<u>Assise et dossier</u> › rotin avec fermeture en nylon	<u>Sitz und Rückenlehne</u> › Rattan mit Nylonbinde	<u>Asiento y respaldo</u> › ratán con ligaduras de nylon
<u>Optional</u> › cuscino indoor › cuscino outdoor	<u>Optional</u> › indoor cushion › outdoor cushion	<u>Optionnel</u> › coussin indoor › coussin outdoor	<u>Optional</u> › Indoor-Kissen › Outdoor-Kissen	<u>Opcional</u> › cojín indoor › cojín outdoor



Ray Poltroncina

HORM / Orlandini Design, 2014

<u>Struttura</u> › legno massello rovere naturale noce canaletto	<u>Structure</u> › solid wood natural oak walnut	<u>Structure</u> › bois massif chêne naturel noyer	<u>Struktur</u> › Massivholz Eiche Natur Nussbaum	<u>Estructura</u> › madera maciza roble natural nogal
<u>Rivestimento</u> › tessuto › pelle › ecopelle	<u>Cover</u> › fabric › leather › faux leather	<u>Revêtement</u> › tissu › cuir › similcuir	<u>Bezug</u> › Stoff › Leder › Kunstleder	<u>Funda</u> › tejido › piel › ecopiel



Gambe

- › legno massello
 - rovere naturale
 - noce canaletto
 - faggio imbiancato
 - faggio moca

Legs

- › solid wood
 - natural oak
 - walnut
 - whitened beech
 - mocha beech

Pieds

- › bois massif
 - chêne naturel
 - noyer
 - hêtre blanchi
 - hêtre moka

Beine

- › Massivholz
 - Eiche Natur
 - Nussbaum
 - Buche geweißt
 - Buche Mokka

Patas

- › madera maciza
 - roble natural
 - nogal
 - haya blanqueada
 - haya moca

Seduta e schienale

- › laccato opaco
 - nero
 - bianco
 - polvere
 - beige
 - rosso vino
 - bruno
 - grafite

Seat and backrest

- › matt lacquered
 - black
 - white
 - dusty grey
 - beige grey
 - wine red
 - brown grey
 - graphite

Assise et dossier

- › laqué mat
 - noir
 - blanc
 - gris poussière
 - gris beige
 - rouge vin
 - gris brun
 - graphite

Sitz und Rückenlehne

- › matt lackiert
 - Schwarz
 - Weiß
 - Staubgrau
 - Beigegräu
 - Weinrot
 - Braungräu
 - Graphit

Asiento y respaldo

- › lacado mate
 - negro
 - blanco
 - gris polvo
 - gris beige
 - rojo vino
 - gris parduzco
 - grafito

47
18.5"

56
22.0"



Finitura

- › jeans
- › jeans + T-shirts
- › tessuto cliente

Finish

- › jeans
- › jeans + T-shirts
- › c.o.m.

Finition

- › jeans
- › jeans + T-shirts
- › tissu client

Ausführung

- › Jeans
- › Jeans + T-Shirts
- › Kundenstoff

Acabado

- › jeans
- › jeans + T-shirts
- › tejido del cliente

42
16.5"

52
20.5"



RememberMe Bistrot

Riddled Tavolo

Finitura

- › jeans
- › jeans + T-shirts
- › tessuto cliente

Finish

- › jeans
- › jeans + T-shirts
- › c.o.m.

Finition

- › jeans
- › jeans + T-shirts
- › tissu client

Ausführung

- › Jeans
- › Jeans + T-Shirts
- › Kundenstoff

Acabado

- › jeans
- › jeans + T-shirts
- › tejido del cliente

Piano

- › vetro

Top

- › glass

Plateau

- › verre

Tischplatte

- › Glas

Tablero

- › vidrio

Gambe

- › legno origami
 - in noce canaletto
 - brevetto HORM

Legs

- › origami wood
 - in walnut
 - HORM patent

Pieds

- › bois origami
 - en noyer
 - brevet HORM

Beine

- › Origami-Nussbaum
- HORM-Patent

Patas

- › madera origami
- de nogal
- patente HORM

Piano

- › vetro extraclear

Top

- › extraclear glass

Plateau

- › verre extra-clair

Tischplatte

- › extraklares Glas

Tablero

- › vidrio extraclaro

Optional

- › illuminazione LED

Optional

- › LED lighting

Optionnel

- › éclairage LED

Optional

- › LED-Beleuchtung

Opcional

- › iluminación LED

75
29.5"



200
78.7"



250
98.4"



250
98.4"



200
78.7"

72
28.3"

Finitura

› multistrato in noce canaletto, mogano, ciliegio, rovere e frassino

Finish

› walnut, mahogany, cherry, oak and ash plywood

Finition

› contre-plaqué en noyer, acajou, cerisier, chêne et frêne

Ausführung

› Multiplex aus Nussbaum, Mahagoni, Kirsche, Eiche und Esche

Acabado

› multicapas en nogal, caoba, cerezo, roble y fresno



Ripples – Like a River

Finitura

› multistrato in noce canaletto, mogano, ciliegio, rovere e frassino

Finish

› walnut, mahogany, cherry, oak and ash plywood

Finition

› contre-plaqué en noyer, acajou, cerisier, chêne et frêne

Ausführung

› Multiplex aus Nussbaum, Mahagoni, Kirsche, Eiche und Esche

Acabado

› multicapas en nogal, caoba, cerezo, roble y fresno

Nota

Raggio interno 400 cm.

Notice

Internal radius 157.5".

Avertissement

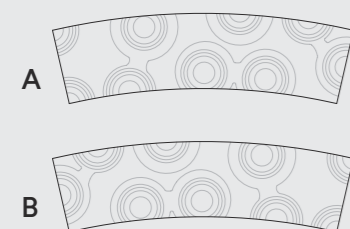
Rayon intérieur 400 cm.

Anmerkungen

Innenradius 400 cm.

Aviso

Radio interior 400 cm.



A+B+A



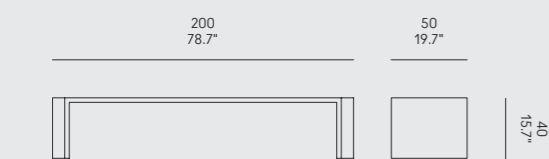
A+A+A



A+B



A+A



Finitura

› multistrato di okumé

Finish

› okoume plywood

Finition

› contre-plaqué en okumé

Ausführung

› Multiplex aus Okume

Acabado

› multicapas en ocume



Ripples Sgabello

Finitura

› multistrato in noce canaletto, mogano, ciliegio, rovere e frassino

Finish

› walnut, mahogany, cherry, oak and ash plywood

Finition

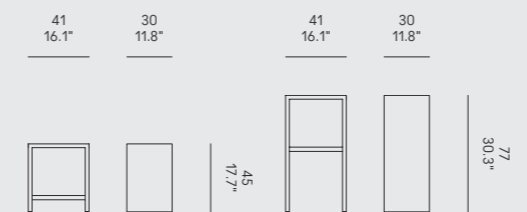
› contre-plaqué en noyer, acajou, cerisier, chêne et frêne

Ausführung

› Multiplex aus Nussbaum, Mahagoni, Kirsche, Eiche und Esche

Acabado

› multicapas en nogal, caoba, cerezo, roble y fresno



Struttura

› multistrato in
noce canaletto,
mogano, ciliegio,
rovere e frassino

Structure

› walnut, mahogany,
cherry, oak and ash
plywood

Structure

› contre-plaqué en
noyer, acajou, cerisier,
chêne et frêne

Struktur

› Multiplex aus
Nussbaum, Mahagoni,
Kirsche, Eiche
und Esche

Estructura

› multicapas en nogal,
caoba, cerezo, roble
y fresno

Piano

› vetro extraclear

Top

› extraclear glass

Plateau

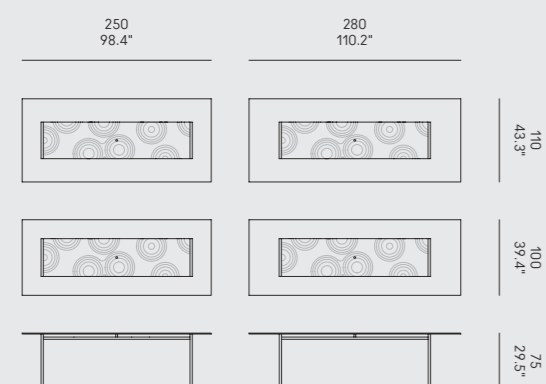
› verre extra-clair

Tischplatte

› extraklares Glas

Tablero

› vidrio extraclaro



Sienna

Gambe

› frassino massello nero

Legs

› solid black ash

Pieds

› frêne noir massif

Beine

› schwarz Escheholz

Patas

› fresno negro macizo

Rivestimento

› tessuto
› pelle
› ecopelle

Cover

› fabric
› leather
› faux leather

Revêtement

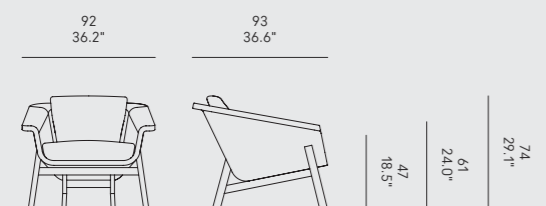
› tissu
› cuir
› similcuir

Bezug

› Stoff
› Leder
› Kunstleder

Funda

› tejido
› piel
› ecopiel



Sin

Struttura

› metallo cromato

Structure

› chromed metal

Structure

› métal chromé

Struktur

› verchromtes Metall

Estructura

› metal cromado

Seduta e schienale

› midollino naturale

Seat and backrest

› natural wicker

Assise et dossier

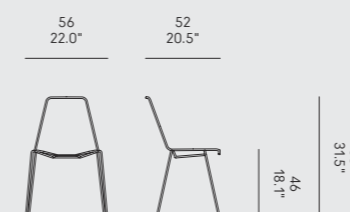
› osier naturel

Sitz und Rückenlehne

› Peddigrohr natur

Asiento y respaldo

› mimbre natural



Soho

Gambe

› frassino massello nero (A)

Legs

› solid black ash (A)

Pieds

› frêne noir massif (A)

Beine

› schwarz Escheholz (A)

Patas

› fresno negro macizo (A)

Base girevole con movimento oscillante e meccanismo di ritorno della seduta
› alluminio nero (B)

Swivel base with tilt and seat return mechanism
› black aluminium (B)

Base pivotante avec mouvement oscillant et mécanisme de retour de l'assise
› aluminium noir (B)

Schwenkfuß mit oszillierender Bewegung und Rückstellmechanismus für den Sitz
› Schwarz Aluminium (B)

Base giratoria con movimiento oscilante y mecanismo de retorno del asiento
› aluminio negro (B)

Rivestimento

› tessuto
› pelle
› ecopelle

Cover

› fabric
› leather
› faux leather

Revêtement

› tissu
› cuir
› similcuir

Bezug

› Stoff
› Leder
› Kunstleder

Funda

› tejido
› piel
› ecopiel



Stereo Impilabile *Imbottita Frontalmente*

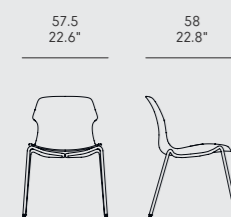
CASAMANIA / Luca Nichetto, 2008

Impilabile e imbottita frontalmente	Stackable and frontally upholstered	Empilable et rembourré à l'avant	Stapelbar und frontal gepolstert	Apilable y tapizada frontalmente
<u>Gambe</u>	<u>Legs</u>	<u>Pieds</u>	<u>Beine</u>	<u>Patas</u>
> metallo	> metal	> métal	> Metall	> metal
nero	black	noir	Schwarz	negro
bianco	white	blanc	Weiß	blanco
polvere	dusty grey	gris poussière	Staubgrau	gris polvo
beige	beige grey	gris beige	Beigegrü	gris beige
cromato	chromed	chromé	Chrom	cromado
<u>Retro dello schienale</u>	<u>Back of the backrest</u>	<u>Arrière du dossier</u>	<u>Rückseite der Rückenlehne</u>	<u>Parte posterior del respaldo</u>
> polipropilene	> polypropylene	> polypropylène	> Polypropylen	> polipropileno
nero	black	noir	Schwarz	negro
bianco	white	blanc	Weiß	blanco
polvere	dusty grey	gris poussière	Staubgrü	gris polvo
beige	beige grey	gris beige	Beigegrü	gris beige
<u>Rivestimento</u>	<u>Cover</u>	<u>Revêtement</u>	<u>Bezug</u>	<u>Funda</u>
> tessuto	> fabric	> tissu	> Stoff	> tejido
> pelle	> leather	> cuir	> Leder	> piel
> ecopelle	> faux leather	> similcuir	> Kunstleder	> ecopiel

Stereo Impilabile *Imbottita Fronte / Retro*

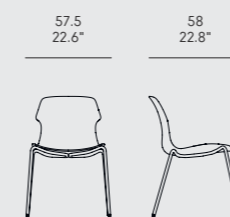
CASAMANIA / Luca Nichetto, 2008

Impilabile e imbottita fronte / retro	Stackable with upholstered front & back	Empilable et rembourré devant / arrière	Stapelbar und Vor- und Rückseite gepolstert	Apilable y tapizada delante / detrás
<u>Gambe</u>	<u>Legs</u>	<u>Pieds</u>	<u>Beine</u>	<u>Patas</u>
> metallo	> metal	> métal	> Metall	> metal
nero	black	noir	Schwarz	negro
bianco	white	blanc	Weiß	blanco
polvere	dusty grey	gris poussière	Staubgrü	gris polvo
beige	beige grey	gris beige	Beigegrü	gris beige
cromato	chrome	chromé	Chrom	cromado
<u>Rivestimento</u>	<u>Cover</u>	<u>Revêtement</u>	<u>Bezug</u>	<u>Funda</u>
> tessuto	> fabric	> tissu	> Stoff	> tejido
> pelle	> leather	> cuir	> Leder	> piel
> ecopelle	> faux leather	> similcuir	> Kunstleder	> ecopiel

Stereo Impilabile *Polipropilene*

CASAMANIA / Luca Nichetto, 2008

Impilabile	Stackable	Empilable	Stapelbar	Apilable
<u>Gambe</u>	<u>Legs</u>	<u>Pieds</u>	<u>Beine</u>	<u>Patas</u>
> metallo	> metal	> métal	> Metall	> metal
nero (A)	black (A)	noir (A)	Schwarz (A)	negro (A)
bianco (A)	white (A)	blanc (A)	Weiß (A)	blanco (A)
polvere (A)	dusty grey (A)	gris poussière (A)	Staubgrü (A)	gris polvo (A)
beige (A)	beige grey (A)	gris beige (A)	Beigegrü (A)	gris beige (A)
cromato (B)	chrome (B)	chromé (B)	Chrom (B)	cromado (B)
<u>Seduta e schienale</u>	<u>Seat and backrest</u>	<u>Assise et dossier</u>	<u>Sitz und Rückenlehne</u>	<u>Asiento y respaldo</u>
> polipropilene	> polypropylene	> polypropylène	> Polypropylen	> polipropileno
nero	black	noir	Schwarz	negro
bianco	white	blanc	Weiß	blanco
polvere	dusty grey	gris poussière	Staubgrü	gris polvo
beige	beige grey	gris beige	Beigegrü	gris beige



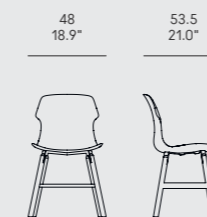
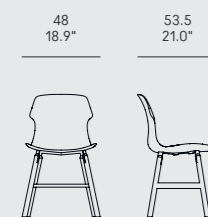
Imbottita frontalmente	Frontally upholstered	Rembourré à l'avant	Frontal gepolstert	Tapizada frontalmente
<u>Gambe</u> > metallo nero bianco polvere beige	<u>Legs</u> > metal black white dusty grey beige grey	<u>Pieds</u> > métal noir blanc gris poussière beige	<u>Beine</u> > Metall Schwarz Weiß Staubgrau Beigegrau	<u>Patas</u> > metal negro blanco gris polvo gris beige
<u>Retro dello schienale</u> > polipropilene nero bianco polvere beige	<u>Back of the backrest</u> > polypropylene black white dusty grey beige grey	<u>Arrière du dossier</u> > polypropylène noir blanc gris poussière gris beige	<u>Rückseite der Rückenlehne</u> > Polypropylen Schwarz Weiß Staubgrau Beigegrau	<u>Parte posterior del respaldo</u> > polipropileno negro blanco gris polvo gris beige
<u>Rivestimento</u> > tessuto > pelle > ecopelle	<u>Cover</u> > fabric > leather > faux leather	<u>Revêtement</u> > tissu > cuir > similcuir	<u>Bezug</u> > Stoff > Leder > Kunstleder	<u>Funda</u> > tejido > piel > ecopiel

<u>Gambe</u> > metallo nero bianco polvere beige	<u>Legs</u> > metal black white dusty grey beige grey	<u>Pieds</u> > métal noir blanc gris poussière gris beige	<u>Beine</u> > Metall Schwarz Weiß Staubgrau Beigegrau	<u>Patas</u> > metal negro blanco gris polvo gris beige
<u>Seduta e schienale</u> > polipropilene nero bianco polvere beige	<u>Seat and backrest</u> > polypropylene black white dusty grey beige grey	<u>Assise et dossier</u> > polypropylène noir blanc gris poussière gris beige	<u>Sitz und Rückenlehne</u> > Polypropylen Schwarz Weiß Staubgrau Beigegrau	<u>Asiento y respaldo</u> > polipropileno negro blanco gris polvo gris beige

Stereo Metal *Imbottita Fronte / Retro*

CASAMANIA / Luca Nichetto, 2015

Imbottita Fronte / Retro	Front & Back Upholstered	Rembourré Devant / Arrière	Vor- und Rückseite gepolstert	Tapizada Delante / Detrás
<u>Gambe</u> > metallo nero bianco polvere beige	<u>Legs</u> > metal black white dusty grey beige grey	<u>Pieds</u> > métal noir blanc gris poussière gris beige	<u>Beine</u> > Metall Schwarz Weiß Staubgrau Beigegrau	<u>Patas</u> > metal negro blanco gris polvo gris beige
<u>Rivestimento</u> > tessuto > pelle > ecopelle	<u>Cover</u> > fabric > leather > faux leather	<u>Revêtement</u> > tissu > cuir > similcuir	<u>Bezug</u> > Stoff > Leder > Kunstleder	<u>Funda</u> > tejido > piel > ecopiel

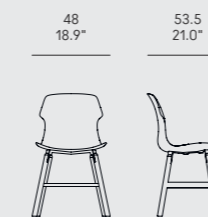
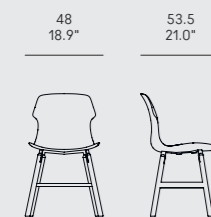


Imbottita frontalmente	Frontally upholstered	Rembourré à l'avant	Frontal gepolstert	Tapizada frontalmente
<u>Gambe</u> › legno massello rovere naturale noce canaletto	<u>Legs</u> › solid wood natural oak walnut	<u>Pieds</u> › bois massif chêne naturel noyer	<u>Beine</u> › Massivholz Eiche Natur Nussbaum	<u>Patas</u> › madera maciza roble natural nogal
<u>Retro dello schienale</u> › polipropilene nero bianco polvere beige	<u>Back of the backrest</u> › polypropylene black white dusty grey beige grey	<u>Arrière du dossier</u> › polypropylène noir blanc gris poussière gris beige	<u>Rückseite der Rückenlehne</u> › Polypropylen Schwarz Weiß Staubgrau Beigegrü	<u>Parte posterior del respaldo</u> › polipropileno negro blanco gris polvo gris beige
<u>Rivestimento</u> › tessuto › pelle › ecopelle	<u>Cover</u> › fabric › leather › faux leather	<u>Revêtement</u> › tissu › cuir › similcuir	<u>Bezug</u> › Stoff › Leder › Kunstleder	<u>Funda</u> › tejido › piel › ecopiel

<u>Gambe</u> › legno massello rovere naturale noce canaletto	<u>Legs</u> › solid wood natural oak walnut	<u>Pieds</u> › bois massif chêne naturel noyer	<u>Beine</u> › Massivholz Eiche Natur Nussbaum	<u>Patas</u> › madera maciza roble natural nogal
<u>Seduta e schienale</u> › polipropilene nero bianco polvere beige	<u>Seat and backrest</u> › polypropylene black white dusty grey beige grey	<u>Assise et dossier</u> › polypropylène noir blanc gris poussière gris beige	<u>Sitz und Rückenlehne</u> › Polypropylen Schwarz Weiß Staubgrau Beigegrü	<u>Asiento y respaldo</u> › polipropileno negro blanco gris polvo gris beige

Stereo Wood *Imbottita Fronte / Retro*

Imbottita Fronte / Retro	Front & Back Upholstered	Rembourré Devant / Arrière	Vor- und Rückv gepolstert	Tapizada Delante / Detrás
<u>Gambe</u> › legno massello rovere naturale noce canaletto	<u>Legs</u> › solid wood natural oak walnut	<u>Pieds</u> › bois massif chêne naturel noyer	<u>Beine</u> › Massivholz Eiche Natur Nussbaum	<u>Patas</u> › madera maciza roble natural nogal
<u>Rivestimento</u> › tessuto › pelle › ecopelle	<u>Cover</u> › fabric › leather › faux leather	<u>Revêtement</u> › tissu › cuir › similcuir	<u>Bezug</u> › Stoff › Leder › Kunstleder	<u>Funda</u> › tejido › piel › ecopiel



Struttura

› metallo (A)
nero
bianco

› acciaio 316 (B)
› acciaio 304 (C)

Piano

› laminato HPL
nero
bianco

Structure

› metal (A)
black
white

› steel 316 (B)
› steel 304 (C)

Top

› HPL laminate
black
white

Structure

› métal (A)
noir
blanc

› acier 316 (B)
› acier 304 (C)

Plateau

› laminé HPL
noir
blanc

Struktur

› Metall (A)
Schwarz
Weiß

› Stahl 316 (B)
› Stahl 304 (C)

Tischplatte

› HPL Laminat
Schwarz
Weiß

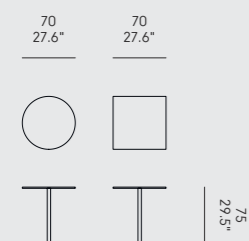
Estructura

› metal (A)
negro
blanco

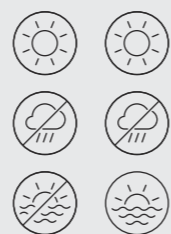
› acero 316 (B)
› acero 304 (C)

Tablero

› laminado HPL
negro
blanco



A / C B



Tavolino da bistrot con
alzata a gas

Struttura

› metallo cromato

Piano

› laminato HPL
nero
bianco

Cafe bar table
with gas lift

Structure

› chromed metal

Top

› HPL laminate
black
white

Table de bistro
avec vérin à gaz

Structure

› métal chromé

Plateau

› laminé HPL
noir
blanc

Bistrotisch mit
Gasfeder

Struktur

› verchromtes Metall

Tischplatte

› HPL Laminat
Schwarz
Weiß

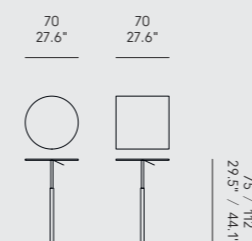
Mesita de bar con
elevador de gas

Estructura

› metal cromado

Tablero

› laminado HPL
negro
blanco



Tavolino da bistrot
impilabile

Struttura

› metallo
nero
bianco

Piano

› laminato HPL
nero
bianco

Stackable cafe bar
table

Structure

› metal
black
white

Top

› HPL laminate
black
white

Table de bistro
empilable

Structure

› métal
noir
blanc

Plateau

› laminé HPL
noir
blanc

Stapelbarer
Bistrotisch

Struktur

› Metall
Schwarz
Weiß

Tischplatte

› HPL Laminat
Schwarz
Weiß

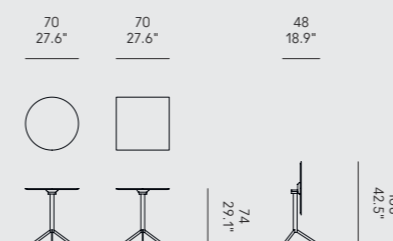
Mesita de bar
apilable

Estructura

› metal
negro
blanco

Tablero

› laminado HPL
negro
blanco



A B

Struttura

› acciaio 316 (A)
› acciaio 304 (B)

Piano

› Werzalit bianco

Structure

› steel 316 (A)
› steel 304 (B)

Top

› white Werzalit

Structure

› acier 316 (A)
› acier 304 (B)

Plateau

› Werzalit blanc

Struktur

› Stahl 316 (A)
› Stahl 304 (B)

Tischplatte

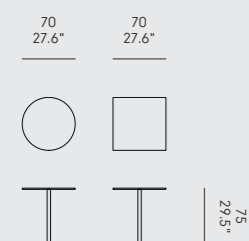
› Weiß Werzalit

Estructura

› acero 316 (A)
› acero 304 (B)

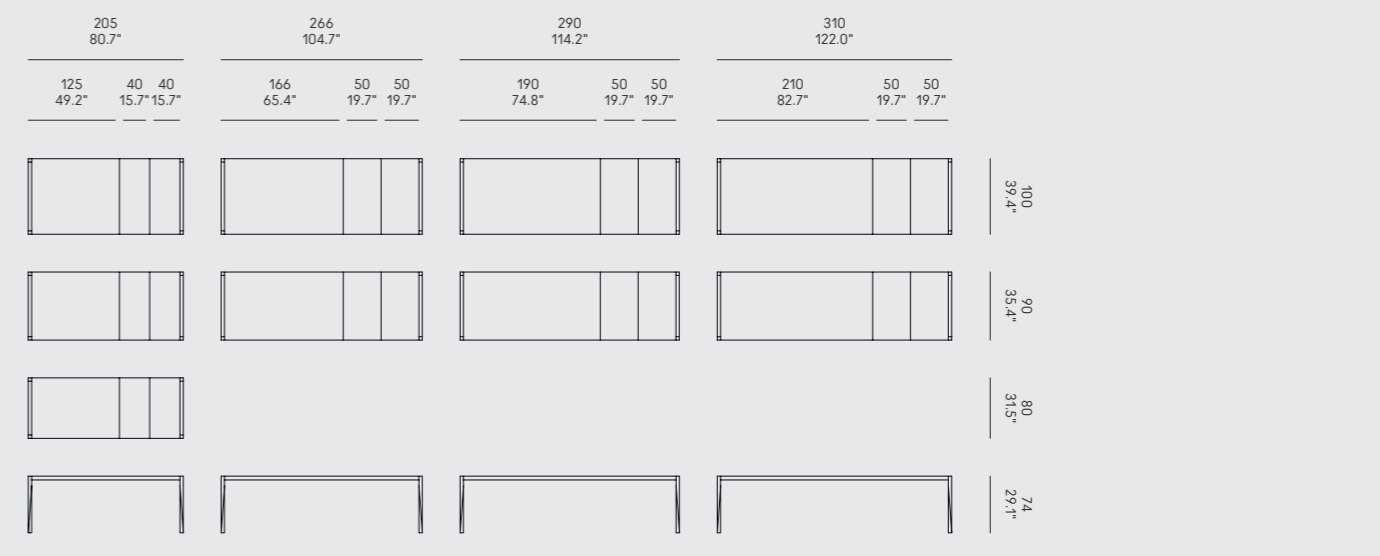
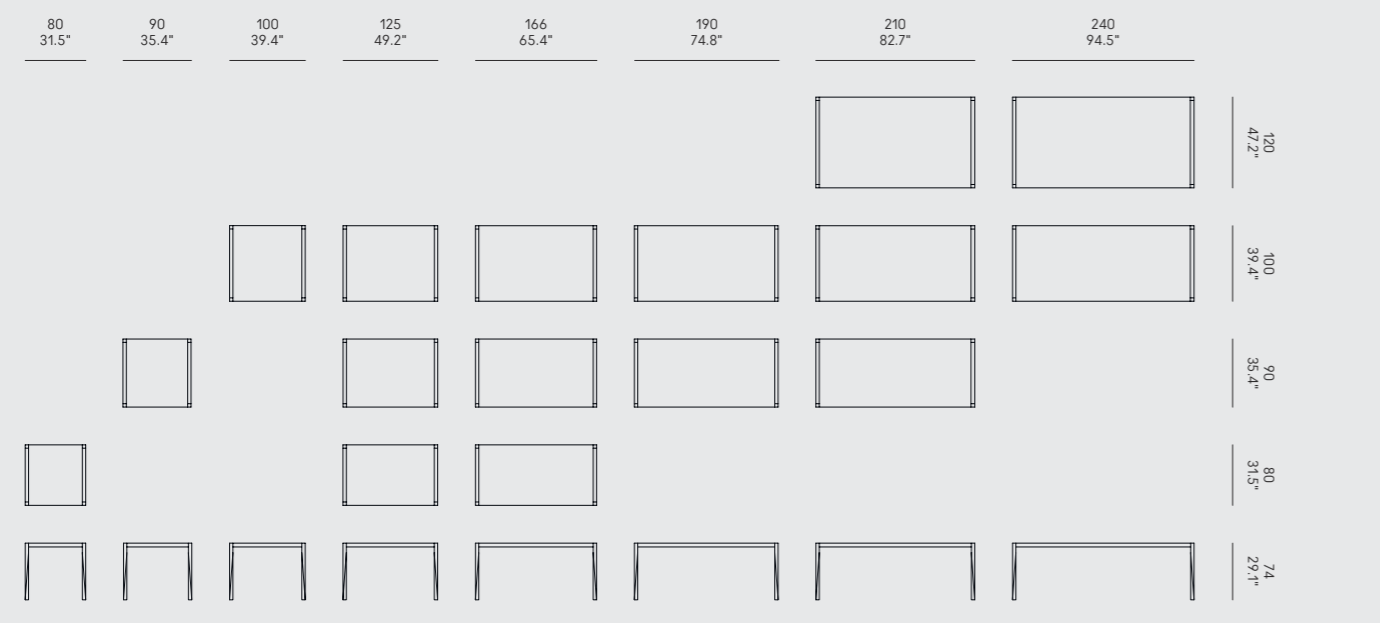
Tablero

› Werzalit blanco



<u>Gambe</u> › legno massello rovere naturale noce canaletto	<u>Legs</u> › solid wood natural oak walnut	<u>Pieds</u> › bois massif chêne naturel noyer	<u>Beine</u> › Massivholz Eiche Natur Nussbaum	<u>Patas</u> › madera maciza roble natural nogal
<u>Piano</u> › Fenix-NTM® nero › Fenix-NTM® bianco › Fenix-NTA® acciaio Hamilton	<u>Top</u> › black Fenix-NTM® › white Fenix-NTM® › Hamilton steel Fenix-NTA®	<u>Plateau</u> › Fenix-NTM® noir › Fenix-NTM® blanc › Fenix-NTA® acier Hamilton	<u>Tischplatte</u> › Schwarz Fenix-NTM® › Weiß Fenix-NTM® › Hamilton Stahl Fenix-NTA®	<u>Tablero</u> › Fenix-NTM® negro › Fenix-NTM® blanco › Fenix-NTA® acero Hamilton
<u>Nota</u> Il Fenix-NTA® acciaio Hamilton è disponibile solo per alcune misure.	<u>Notice</u> The Fenix-NTA® Hamilton steel finish is available only for some measures.	<u>Avertissement</u> La finition Fenix-NTA® acier Hamilton n'est disponible que pour certaines mesures.	<u>Anmerkungen</u> Die Fenix-NTA® Hamilton Stahl Oberfläche ist nur für einige Maße erhältlich.	<u>Aviso</u> El acabado de Fenix- NTA® acero Hamilton está disponible sólo para algunas medidas.

<u>Gambe</u> › legno massello rovere naturale noce canaletto	<u>Legs</u> › solid wood natural oak walnut	<u>Pieds</u> › bois massif chêne naturel noyer	<u>Beine</u> › Massivholz Eiche Natur Nussbaum	<u>Patas</u> › madera maciza roble natural nogal
<u>Piano e allunghe</u> › Fenix-NTM® nero › Fenix-NTM® bianco › Fenix-NTA® acciaio Hamilton	<u>Top and extensions</u> › black Fenix-NTM® › white Fenix-NTM® › Hamilton steel Fenix-NTA®	<u>Plateau et rallonges</u> › Fenix-NTM® noir › Fenix-NTM® blanc › Fenix-NTA® acier Hamilton	<u>Tischplatte und Verlängerungen</u> › Schwarz Fenix-NTM® › Weiß Fenix-NTM® › Hamilton Stahl Fenix-NTA®	<u>Tablero y extensiones</u> › Fenix-NTM® negro › Fenix-NTM® blanco › Fenix-NTA® acero Hamilton
<u>Nota</u> Il Fenix-NTA® acciaio Hamilton è disponibile solo per alcune misure.	<u>Notice</u> The Fenix-NTA® Hamilton steel finish is available only for some measures.	<u>Avertissement</u> La finition Fenix-NTA® acier Hamilton n'est disponible que pour certaines mesures.	<u>Anmerkungen</u> Die Fenix-NTA® Hamilton Stahl Oberfläche ist nur für einige Maße erhältlich.	<u>Aviso</u> El acabado de Fenix- NTA® acero Hamilton está disponible sólo para algunas medidas.



Gambe

› metallo crudo

Legs

› hard metal

Pieds

› métal cru

Beine

› Rohmetall

Patas

› metal crudo

Piano

› ceramica grigia

Top

› grey ceramic

Plateau

› céramique grise

Tischplatte

› graue Keramik

Tablero

› cerámica gris

Nota

Gli abbinamenti possibili sono:

A1 + A2
B1 + B2
C1 + C2
D1 + D2Notice

The possible matches are:

A1 + A2
B1 + B2
C1 + C2
D1 + D2Avertissement

Les combinaisons possibles sont:

A1 + A2
B1 + B2
C1 + C2
D1 + D2Anmerkungen

Die möglichen Kombinationen sind:

A1 + A2
B1 + B2
C1 + C2
D1 + D2Aviso

Las combinaciones posibles son:

A1 + A2
B1 + B2
C1 + C2
D1 + D2Struttura

› metallo nero

Structure

› black metal

Structure

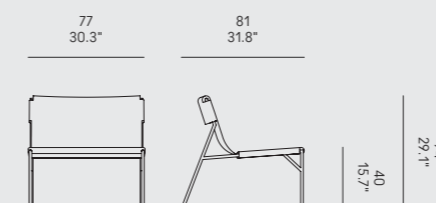
› métal noir

Struktur

› schwarzes Metall

Estructura

› metal negro

Seduta e schienale› cuoio pieno fiore
naturale
grigio talpa
testa di moro
neroSeat and backrest› hard leather grade 1
natural
taupe
dark brown
blackAssise et dossier› cuir pleine fleur
naturel
taupe
brun foncé
noirSitz und Rückenlehne› Kernleder
Natur
Taupe
Dunkelbraun
SchwarzAsiento y respaldo› cuero
natural
gris ratón
testa di moro
negro

Tout le Jour Sedia

Struttura

› metallo nero

Structure

› black metal

Structure

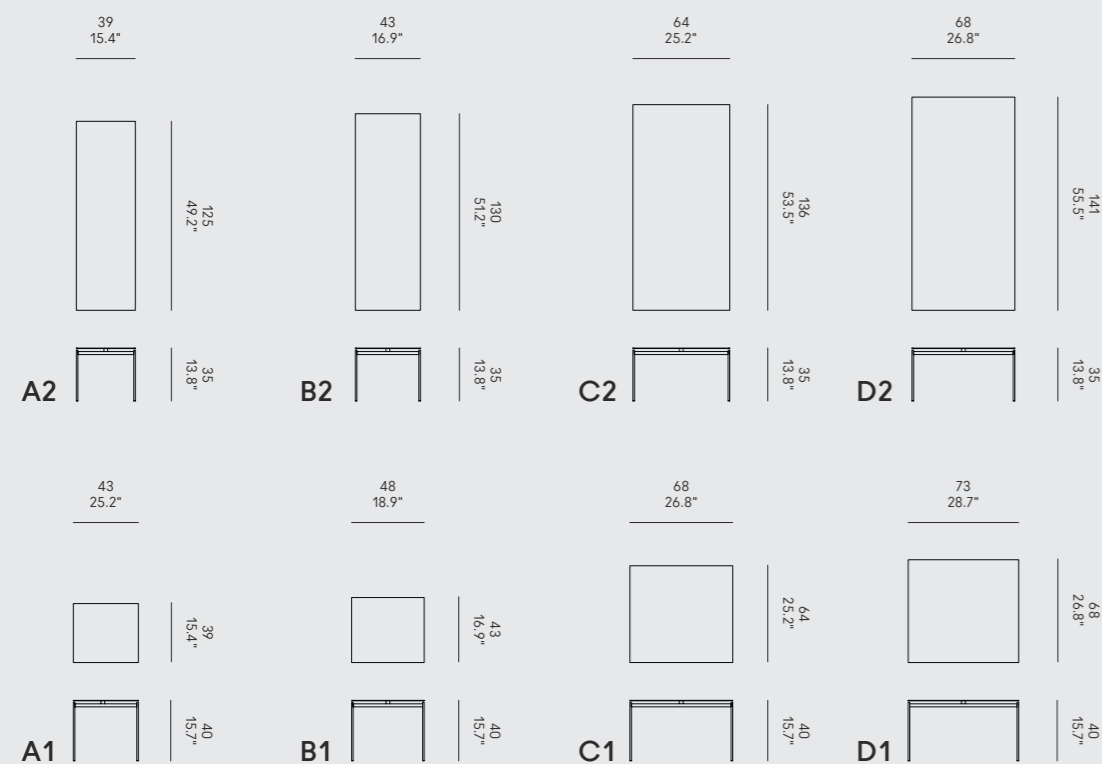
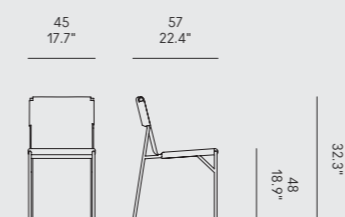
› métal noir

Struktur

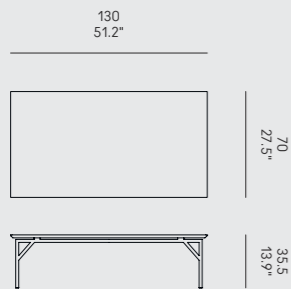
› schwarzes Metall

Estructura

› metal negro

Seduta e schienale› cuoio pieno fiore
naturale
grigio talpa
testa di moro
neroSeat and backrest› hard leather grade 1
natural
taupe
dark brown
blackAssise et dossier› cuir pleine fleur
naturel
taupe
brun foncé
noirSitz und Rückenlehne› Kernleder
Natur
Taupe
Dunkelbraun
SchwarzAsiento y respaldo› cuero
natural
gris ratón
testa di moro
negro

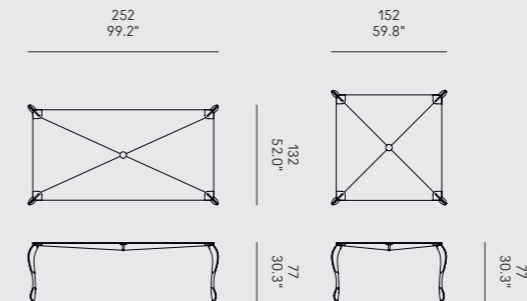
<u>Struttura</u> › metallo nero	<u>Structure</u> › black metal	<u>Structure</u> › métal noir	<u>Struktur</u> › schwarzes Metall	<u>Estructura</u> › metal negro
<u>Piano</u> › marmo Marquina Emperador	<u>Top</u> › marble Marquina Emperador	<u>Plateau</u> › marbre Marquina Emperador	<u>Tischplatte</u> › Marmor Marquina Emperador	<u>Tablero</u> › mármol Marquina Emperador



<u>Gambe</u> › acciaio	<u>Legs</u> › steel	<u>Pieds</u> › acier	<u>Beine</u> › Stahl	<u>Patas</u> › acero
<u>Decorì sulle gambe</u> › legno massello noce canaletto	<u>Decorations on the legs</u> › solid wood walnut	<u>Décorations sur les pieds</u> › bois massif noyer	<u>Beine Dekorationen</u> › Massivholz Nussbaum	<u>Decoraciones en las patas</u> › madera maciza nogal

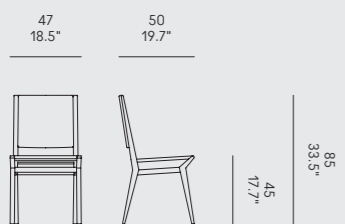
<u>Piano</u> › vetro extraclear	<u>Top</u> › extraclear glass	<u>Plateau</u> › verre extra-clair	<u>Tischplatte</u> › extraklares Glas	<u>Tablero</u> › vidrio extraclaro
------------------------------------	----------------------------------	---------------------------------------	------------------------------------------	---------------------------------------

<u>Nota</u> Misure del top in vetro: › 120 x 240 cm › 140 x 140 cm	<u>Notice</u> Glass top dimensions: › 120x240cm / 47.3"x94.5" › 140x140cm / 55.1"x55.1"	<u>Avertissement</u> Dimensions du plateau en verre: › 120 x 240 cm › 140 x 140 cm	<u>Anmerkungen</u> Glasplatte Größe: › 120 x 240 cm › 140 x 140 cm	<u>Aviso</u> Medidas del tablero de cristal: › 120 x 240 cm › 140 x 140 cm
--------------------------------------------------------------------------------	-----------------------------------------------------------------------------------------------------	------------------------------------------------------------------------------------------------	--------------------------------------------------------------------------------	----------------------------------------------------------------------------------------

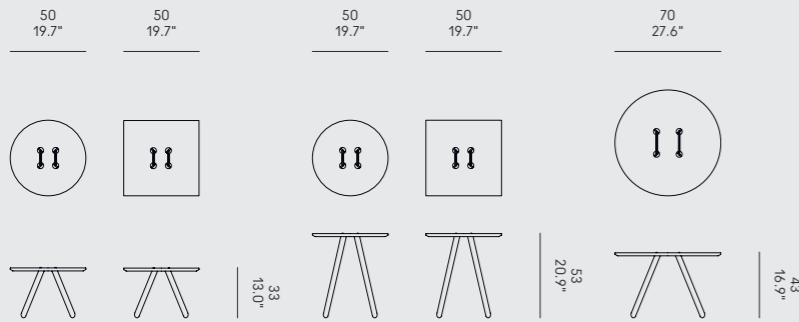


Tribeca

<u>Struttura</u> › legno massello noce canaletto	<u>Structure</u> › solid wood walnut	<u>Structure</u> › bois massif noyer	<u>Struktur</u> › Massivholz Nussbaum	<u>Estructura</u> › madera maciza nogal
<u>Rivestimento</u> › tessuto › pelle › ecopelle	<u>Cover</u> › fabric › leather › faux leather	<u>Revêtement</u> › tissu › cuir › similcuir	<u>Bezug</u> › Stoff › Leder › Kunstleder	<u>Funda</u> › tejido › piel › ecopiel

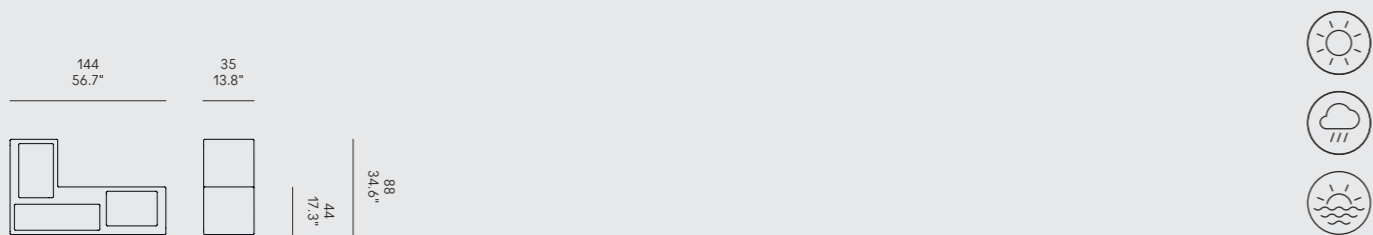


Gambe › metallo verniciato nero bianco bronzo antico	Legs › painted metal black white bronze antique	Pieds › métal verni noir blanc bronze antique	Beine › beschichtetes Metall Schwarz Weiß Vintage Bronze	Patas › metal pintado negro blanco bronze antiguo
Piano › laccato opaco bianco › rovere naturale › rovere moca › noce canaletto	Top › white matt lacquered › natural oak › mocha oak › walnut	Plateau › laqué mat blanc › chêne naturel › chêne moka › noyer	Tischplatte › weiß matt lackiert › Eiche Natur › Eiche Mokka › Nussbaum	Tablero › lacado mate blanco › roble natural › roble moca › nogal

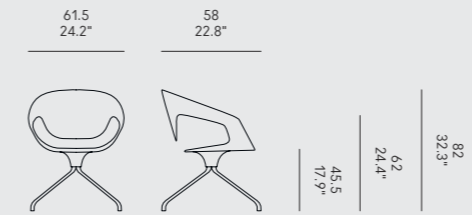


Urban

Finitura › polietilene nero bianco polvere beige	Finish › polyethylene black white dusty grey beige grey	Finition › polyéthylène noir blanc gris poussière gris beige	Ausführung › Polyethylen Schwarz Weiß Staubgrau Beigegräu	Acabado › polietileno negro blanco gris polvo gris beige
------------------------------------------------------------------------	-------------------------------------------------------------------------------	------------------------------------------------------------------------------------	---------------------------------------------------------------------------------	--------------------------------------------------------------------------------

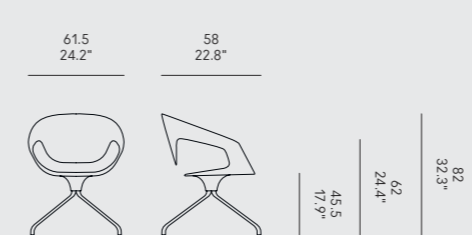


Sedia con trespolo girevole	Chair with swivel trestle	Chaise avec piètement pivotant	Stuhl mit drehbarer Sternfuß	Silla con estructura giratoria
Trespolo › metallo nero cromato	Trestle › metal black chromed	Piètement › métal noir chromé	Sternfuß › Metall Schwarz Chrom	Estructura › metal negro cromado
Rivestimento › cuoietto finitura naturale	Cover › hard leather grade 2 natural finish	Revêtement › cuir finition naturelle	Bezug › Kernleder Natur-Finish	Funda › cuero acabado natural



Vad Girevole Imbottita

Sedia con trespolo girevole imbottita	Upholstered chair with swivel trestle	Chaise rembourrée avec piètement pivotant	Polsterstuhl mit drehbarer Sternfuß	Silla tapizada con estructura giratoria
Trespolo › metallo nero cromato	Trestle › metal black chromed	Piètement › métal noir chromé	Sternfuß › Metall Schwarz Chrom	Estructura › metal negro cromado
Rivestimento › tessuto › pelle › ecopelle	Cover › fabric › leather › faux leather	Revêtement › tissu › cuir › similcuir	Bezug › Stoff › Leder › Kunstleder	Funda › tejido › piel › ecopiel



Sedia con trespolo girevole

Chair with swivel trestle

Chaise avec piètement pivotant

Stuhl mit drehbarer Sternfuß

Silla con estructura giratoria

Trespolo

› metallo
nero
cromato

Trestle

› metal
black
chromed

Piètement

› métal
noir
chromé

Sternfuß

› Metall
Schwarz
Chrom

Estructura

› metal
negro
cromado

Seduta e schienale

› polipropilene
nero
bianco
polvere
beige

Seat and backrest

› polypropylene
black
white
dusty grey
beige grey

Assise et dossier

› polypropylène
noir
blanc
gris poussière
gris beige

Sitz und Rückenlehne

› Polypropylen
Schwarz
Weiß
Staubgrau
Beigegräu

Asiento y respaldo

› polipropileno
negro
blanco
gris polvo
gris beige

Impilabile

Stackable

Empilable

Stapelbar

Apilable

Gambe

› metallo
nero
bianco
polvere
beige
cromato

Legs

› metal
black
white
dusty grey
beige grey
chromed

Pieds

› métal
noir
blanc
gris poussière
gris beige
chromé

Beine

› Metall
Schwarz
Weiß
Staubgrau
Beigegräu
Chrom

Patas

› metal
negro
blanco
gris polvo
gris beige
cromado

Rivestimento

› cuoietto
finitura naturale

Cover

› hard leather grade 2
natural finish

Revêtement

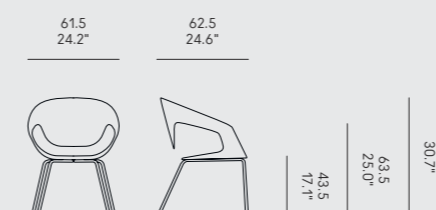
› cuir
finition naturelle

Bezug

› Kernleder
Natur-Finish

Funda

› cuero
acabado natural



Impilabile e imbottita

Stackable and upholstered

Empilable et rembourré

Stapelbar und gepolstert

Apilable y tapizada

Gambe

› metallo
nero
bianco
polvere
beige
cromato

Legs

› metal
black
white
dusty grey
beige grey
chrome

Pieds

› métal
noir
blanc
gris poussière
gris beige
chromé

Beine

› Metall
Schwarz
Weiß
Staubgrau
Beigegräu
Chrom

Patas

› metal
negro
blanco
gris polvo
gris beige
cromado

Rivestimento

› tessuto
› pelle
› ecopelle

Cover

› fabric
› leather
› faux leather

Revêtement

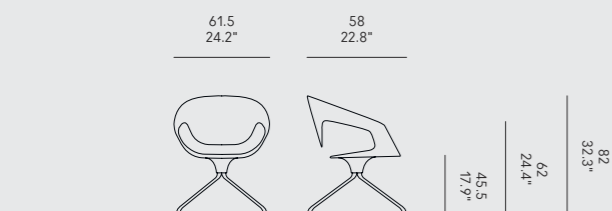
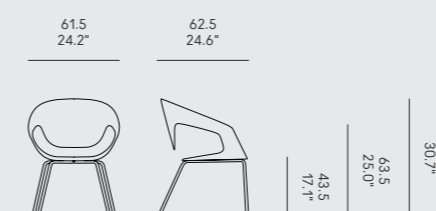
› tissu
› cuir
› similcuir

Bezug

› Stoff
› Leder
› Kunstleder

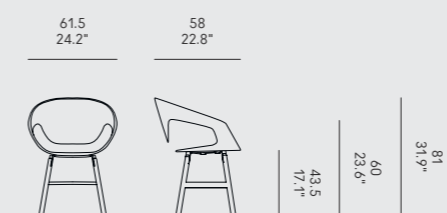
Funda

› tejido
› piel
› ecopiel

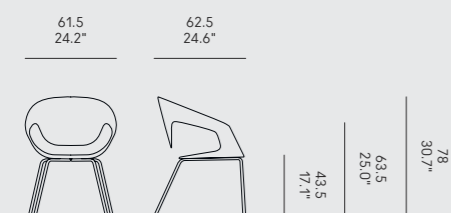
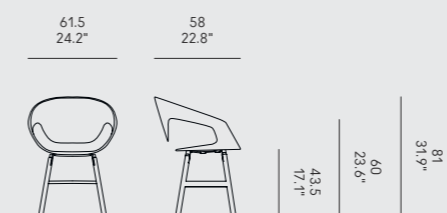


Impilabile	Stackable	Empilable	Stapelbar	Apilable
<u>Gambe</u> › metallo nero (A) bianco (A) polvere (A) beige (A) cromato (B)	<u>Legs</u> › metal black (A) white (A) dusty grey (A) beige grey (A) chrome (B)	<u>Pieds</u> › métal noir (A) blanc (A) gris poussière (A) gris beige (A) chromé (B)	<u>Beine</u> › Metall Schwarz (A) Weiß (A) Staubgrau (A) Beigegräu (A) Chrom (B)	<u>Patas</u> › metal negro (A) blanco (A) gris polvo (A) gris beige (A) cromado (B)
<u>Seduta e schienale</u> › polipropilene nero bianco polvere beige	<u>Seat and backrest</u> › polypropylene black white dusty grey beige grey	<u>Assise et dossier</u> › polypropylène noir blanc gris poussière gris beige	<u>Sitz und Rückenlehne</u> › Polypropylen Schwarz Weiß Staubgrau Beigegräu	<u>Asiento y respaldo</u> › polipropileno negro blanco gris polvo gris beige

<u>Gambe</u> › legno massello rovere naturale noce canaletto	<u>Legs</u> › solid wood natural oak walnut	<u>Pieds</u> › bois massif chêne naturel noyer	<u>Beine</u> › Massivholz Eiche Natur Nussbaum	<u>Patas</u> › madera maciza roble natural nogal
<u>Rivestimento</u> › cuoietto finitura naturale	<u>Cover</u> › hard leather grade 2 natural finish	<u>Revêtement</u> › cuir finition naturelle	<u>Bezug</u> › Kernleder Natur-Finish	<u>Funda</u> › cuero acabado natural



Imbottita	Upholstered	Rembourré	Gepolstert	Tapizada
<u>Gambe</u> › legno massello rovere naturale noce canaletto	<u>Legs</u> › solid wood natural oak walnut	<u>Pieds</u> › bois massif chêne naturel noyer	<u>Beine</u> › Massivholz Eiche Natur Nussbaum	<u>Patas</u> › madera maciza roble natural nogal
<u>Rivestimento</u> › tessuto › pelle › ecopelle	<u>Cover</u> › fabric › leather › faux leather	<u>Revêtement</u> › tissu › cuir › similcuir	<u>Bezug</u> › Stoff › Leder › Kunstleder	<u>Funda</u> › tejido › piel › ecopiel



Gambe

› legno massello
rovere naturale
noce canaletto

Legs

› solid wood
natural oak
walnut

Pieds

› bois massif
chêne naturel
noyer

Beine

› Massivholz
Eiche Natur
Nussbaum

Patas

› madera maciza
roble natural
nogal

Seduta e schienale

› polipropilene
nero
bianco
polvere
beige

Seat and backrest

› polypropylene
black
white
dusty grey
beige grey

Assise et dossier

› polypropylène
noir
blanc
gris poussière
gris beige

Sitz und Rückenlehne

› Polypropylen
Schwarz
Weiß
Staubgrau
Beigegräu

Asiento y respaldo

› polipropileno
negro
blanco
gris polvo
gris beige

61.5
24.2"

58
22.8"



Velasca

Struttura

› legno massello
frassino tinto rovere
frassino nero
frassino beige

Structure

› solid wood
oak-stained ash
black ash
beige grey ash

Structure

› bois massif
frêne teinté chêne
frêne noir
frêne gris beige

Struktur

› Massiv Escheholz
gefärbt Eiche
Schwarz
Beigegräu

Estructura

› madera maciza
fresno teñido roble
fresno negro
fresno gris beige

Rivestimento

› tessuto
› pelle
› ecopelle

Cover

› fabric
› leather
› faux leather

Revêtement

› tissu
› cuir
› similcuir

Bezug

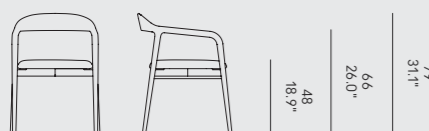
› Stoff
› Leder
› Kunstleder

Funda

› tejido
› piel
› ecopiel

59
23.2"

62
24.4"



Wow! Plus

Struttura

› metallo
nero
bianco

Structure

› metal
black
white

Structure

› métal
noir
blanc

Struktur

› Metall
Schwarz
Weiß

Estructura

› metal
negro
blanco

Piano

› rovere naturale
› noce canaletto

Top

› natural oak
› walnut

Plateau

› chêne naturel
› noyer

Tischplatte

› Eiche Natur
› Nussbaum

Tablero

› roble natural
› nogal

› laminato HPL
nero
bianco

› HPL laminate
black
white

› laminé HPL
noir
blanc

› HPL Laminat
Schwarz
Weiß

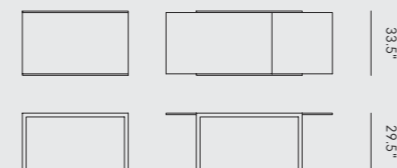
› laminado HPL
negro
blanco

140
55.1"

220
86.6"

140
55.1"

80
31.5"



Art Director

Renato Zamberlan

Photos

Gianni Antoniali
/ Ikon Productions

Set Dresser

Claudia Sani
/ Ikon Productions

except:

Casamania image bank
26, 50, 62, 63, 120, 124,
125, 132, 134, 148, 163,
226, 227, 228

Thanks to:

Bosa Ceramiche
Cc-tapis
London Art

Archiproducts

203

Trecentino

205



Tutti i prodotti illustrati
in questo catalogo sono
Made in Italy

All products illustrated
in this catalogue are
Made in Italy

Tous les produits
illustrés dans
ce catalogue sont
Made in Italy

Alle produkte in
diesem katalog sind
Made in Italy

Todos los productos
presentados en este
catálogo son
Made in Italy

Horm Italia Srl si riserva
la facoltà di apportare,
in qualunque momento
e senza preavviso,
modifiche e/o migliorie
di carattere tecnico
o estetico ai prodotti
illustrati nel presente
catalogo e declina
ogni responsabilità per
eventuali inesattezze
contenute nello stesso.
Le textures ed i colori
dei materiali e delle
finiture hanno valore
indicativo in quanto
soggetti alle tolleranze
dei processi di stampa.

Horm Italia Srl reserves
the right to make, at
any time and without
notice, technical or
aesthetic changes
and/or improvements to
the products illustrated
in this catalogue
and declines all
responsibility for any
inaccuracies contained
in it. Textures and
colours of materials and
finishes are indicative
as they are subject
to the tolerances of
printing processes.

Horm Italia Srl se
réserve le droit
d'apporter, à tout
moment et sans
notification préalable,
des modifications
et/ou des améliorations
de type technique ou
esthétique aux produits
illustrés dans le présent
catalogue, et décline
toute responsabilité
pour les éventuelles
inexactitudes
contenues dans ce
catalogue. Les textures
et les couleurs des
matériaux et des
finitions sont une valeur
indicative parce-que
ils changent selon la
tolérance aux procédés
d'imprimerie.

Horm Italia Srl behält
sich das Recht vor,
jederzeit und ohne
vorherige, Ankündigung
Änderungen
und/oder technische
oder ästhetische
Verbesserungen an
den im vorliegenden
Katalog dargestellten
Produkten vorzunehmen,
und übernimmt keine
Verantwortung
für eventuelle
darin enthaltene
Ungeauigkeiten. Die
Texturen und Farben
der Materialien und
Finish haben einen
indicativen Wert, da sie
von den Toleranzen im
Druckprozess abhängig
sind.

Horm Italia Srl se
reserva la facultad de
aportar, en cualquier
momento y sin previo
aviso, cambios y
mejoras de carácter
técnico o estético a los
productos ilustrados
en este catálogo,
y se exime de toda
responsabilidad
por cualesquiera
inexactitudes que
éste catálogo pueda
contener. Las textures
y los colores de los
materiales y de los
acabados tienen solo
un valor indicativo
porque están sujetos
a la tolerancia de los
procesos de imprenta.

Horm, Casamania and Orizzonti Italia
are registered trademarks of:

Horm Italia Srl

via Antonio Carpenè, 17
33070 Brugnera (PN)
Italy

International
Sales Desk
orders@horm.it
Tel. +39 0434 1979101

Ufficio Commerciale
Italia
ordini@horm.it
Tel. +39 0434 1979102

horm.it
casamania.it
orizzontiitalia.it

#HormDesign
#Casamania
#HormCasamania

© Horm Italia Srl

