

KOKET

LOVE HAPPENS

Guilty Pleasures and Exotic Opulence

# Collection



KOKET®  
LOVE HAPPENS

# *Letter from Founder*

Love Happened with a simple sketch of a chair over cocktails in a New York City lounge. As the grace of the pen took to the paper my desire to possess this chair and create more pieces with the same empowerment began my journey.



The KOKET brand is truly a personal reflection of who I am. It offers a glimpse into my world and everything that moves me. It is all about what I believe in, where I have been, and where I take the brand is closely tied to my personal growth.

I am comfortable taking risks and often turning heads and commanding attention. KOKET is not about design trends or fulfilling design voids. It is a highly edited curation of décor and content filled with the experiences, simple pleasures, passions and life events that have shaped me.

Through KOKET I share my joie de vivre and coquettish frill while empowering you to follow my lead and take risks to create a sense of individual style for yourself, your home, and your lifestyle. Fall in love with KOKET and let me empower you through my statement pieces and unique design driven experiences and content.

With all my love,

*janet*

## FOUNDER and CEO

*NOTED FOR HER DRAMATIC AND EDGY DESIGN AESTHETIC, ENTICING PERSONALITY AND STRONG LOVE AFFAIR WITH LIFE, Janet Morais is the founder, CEO, and driving force behind the world-renowned and seductive home décor brand and interior design firm KOKET, and the brand agency DeMorais International.*



*Born in New York and raised between Europe and North America, Janet has a deep familiarity with both European and American culture which she continues to nurture today as she splits her time between the two continents. This global perspective and her multi-lingual command of four languages have uniquely positioned her at the center of the rapidly evolving inter-national luxury market.*

# JANET MORAIS



## *about the* **BRAND**

Daring design aesthetic, high impact shows, lavish presentations and the notoriously risqué ad campaigns, have an uncanny way of conveying KOKET's mission which is to create highly desirable, empowering statement pieces.

The innate desire to seduce and entice its devotees is perfectly illustrated in the Guilty Pleasures & Exotic Opulence Collections. Composed of dramatic case goods, luscious upholstery, exquisite lighting and decadent furs; all of which will mesmerize with their magical mineral medley, lux metals, vibrant jewel tones and exotic peacock feathers.

### *KOKET's savoir faire is intoxicating!*

The line is manufactured by master artisans and jewelers who leave no detail or element forgotten. KOKET's principal designers are a group of exceptionally artistic and well-rounded product designers who are led by Janet's creative eye and almost fanatic strive for perfection.

The brand is managed by an elite staff of highly skilled individuals who strive to create moments of design seduction while seamlessly selling the collection worldwide through a selective network of interior designers and luxury retail stores.

*intoxicating  
savoir faire  
by koket*



1. DIVINE | Armoire 2. MUSE | Sconce 3. SERPENTINE | Sconce  
4. SPELLBOUND | Cabinet 5. CAPRICHOSA | Sofa 6. VENGEANCE | Table Lamp

# *guilty pleasures* COLLECTION

*A curated collection composed of stunning casegoods, luscious upholstery nished in KOKET's exquisite textiles collection, and light textures that will command attention in any space.*

## *CASEGOODS*

Never have you seen a more jaw-dropping collection of glamorous armories and cabinets, alluring tables, decadent consoles and exotic mirrors and screens. Step into an enchanted world of rare stones, unusual crystal hues, the nest metals, and exotic feathers, and begin your love affair with luxury design.

## *UPHOLSTERY*

Modern and glamorous, trendy and timeless, KOKET has many femme fatales of upholstery. Whether searching for the perfect sofa for a nightclub lounge, or stylish reading chair for the living room, our desirable upholstery designs will satisfy all your needs. We aim to please, so all of our lovely ladies have the option to be dressed in any fabric from our lavish textiles collection. Now you can bring KOKET into one of the most pleasing spaces of your home with our sultry new collection of fully upholstered beds. The sensuous curves, lavish fabrics, opulent accents and daring designs KOKET is famous for, are small glimpses into the seductive and desirable bedroom collection that awaits.

## *LIGHTING*

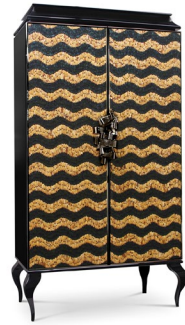
Shimmering crystals, the natural beauty of semi-precious agate slices, light dancing across gleaming bronze and gold designs, KOKET's decadent ambient lighting provides the perfect setting for any mood. Our breathtaking lighting collection features daring designs and high quality materials for the perfect statement piece.



**DIVINE | ARMOIRE**

W. 116 cm/45,6 in D. 65 cm/25,5 in H. 210 cm/82,6 in

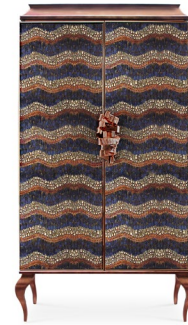
[learn more](#)



**DIVINE | ARMOIRE**

W. 116 cm/45,6 in D. 65 cm/25,5 in H. 210 cm/82,6 in

[learn more](#)



**DIVINE | ARMOIRE**

W. 116 cm/45,6 in D. 65 cm/25,5 in H. 210 cm/82,6 in

[learn more](#)



**DIVINE | ARMOIRE**

W. 116 cm/45,6 in D. 65 cm/25,5 in H. 210 cm/82,6 in

[learn more](#)



**DIVINE | ARMOIRE**

W. 116 cm/45,6 in D. 65 cm/25,5 in H. 210 cm/82,6 in

[learn more](#)



**PARISIAN | ARMOIRE**

W. 108 cm/42,5 in D. 52 cm/20,5 in H. 210 cm/82,7 in

[learn more](#)



**HEIVE | ARMOIRE**

W. 110 cm/43,31 in D. 53 cm/20,87 in H. 205 cm/80,71 in

[learn more](#)



**MADemoiselle | ARMOIRE**

W. 121,5 cm/47,8 in D. 53 cm/20,9 in H. 210 cm/82,7 in

[learn more](#)



**CAMILIA | ARMOIRE**

W. 118 cm/46,5 in D. 50 cm/19,7 in H. 257 cm/101,2 in

[learn more](#)





**SPELLBOUND | ARMOIRE**  
 W. 105 cm/41,3 in D. 60 cm/23,6 in H. 200 cm/78,7 in  
[learn more](#)



**TEMPTATION | BAR CABINET**  
 W. 115 cm/45,3 in D. 66 cm/26 in H. 175 cm/68,9 in  
[learn more](#)



**SPELLBOUND | BAR CABINET**  
 W. 100 cm/39,4 in D. 59 cm/23,2 in H. 165 cm/65 in  
[learn more](#)



**SPELLBOUND | CABINET**  
 W. 205 cm/80,7 in D. 57,5 cm/22,6 in H. 88 cm/34,6 in  
[learn more](#)



**CAMILIA | CABINET**  
 W. 189 cm/74,4 in D. 54 cm/21,3 in H. 91 cm/35,8 in  
[learn more](#)



**ORCHIDEA | CABINET**  
 W. 200 cm/78,7 in D. 54 cm/21,3 in H. 90,5 cm/35,6 in  
[learn more](#)



**SINFUL | CABINET**  
 W. 180,5 cm/71,1 in D. 46,5 cm/18,3 in H. 105 cm/41,3 in  
[learn more](#)



**OPIUM | CABINET**  
 W. 214cm/84,3 in D. 53 cm/20,9 in H. 90 cm/35,8 in  
[learn more](#)



**POEM | CHEST**  
 W. 167 cm/ 65,8 in D. 60 cm/23,6 in H. 105 cm/41,3 in  
[learn more](#)

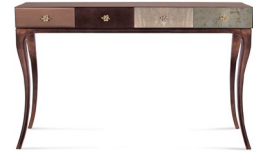




**DECADENCE | BOOKCASE**  
W. 200 cm/78,7 in D. 40 cm/15,8 in H. 200 cm/78,7 in  
[learn more](#)



**TEMPTATION | CONSOLE**  
W. 140 cm/55,1 in D. 54 cm/21,3 in H. 89,2 cm/35,1 in  
[learn more](#)



**UNTAMED | CONSOLE**  
W. 145 cm/56,6 in D. 40 cm/15,6 in H. 90 cm/35,1 in  
[learn more](#)



**LURIDAE | CONSOLE**  
W. 140 cm/55,1 in D. 46 cm/18,1 in H. 84/33,1 in  
[learn more](#)



**EXOTICA | DRESSING TABLE**  
W. 129 cm/59,8 in D. 43 cm/16,9 in H. 80 cm/31,5 in  
[learn more](#)



**ORCHIDEA | CONSOLE**  
W. 150 cm/59,1 in D. 39 cm/15,4 in H. 90 cm/35,4 in  
[learn more](#)



**BURLESQUE | CONSOLE**  
W. 145 cm/57,1 in D. 45 cm/17,7 in H. 91 cm/35,8 in  
[learn more](#)



**RIBBON | CONSOLE**  
W. 160 cm/63 in D.50 cm/19,7 in H. 90 cm/35,4 in  
[learn more](#)



**OBSSEDIA | CONSOLE**  
W. 150 cm/58,5 in D. 50 cm/19,5 in H. 91 cm/35,5 in  
[learn more](#)





**AVALANCHE | CONSOLE**  
 W. 130 cm/51,2 in D. 45 cm/17,7 in H. 90 cm/35,4 in  
[learn more](#)



**TAMARA | CONSOLE**  
 W. 140 cm/55,1 in D. 45 cm/17,7 in H. 90 cm/35,4 in  
[learn more](#)



**RIBBON | DINING TABLE**  
 W. 200 cm/78,7 in D. 110 cm/43,3 in H. 82,5 cm/32,5 in  
[learn more](#)



**OBSSEDIA | DINING TABLE**  
 W. 243 cm/94,8 in D. 110 cm/42,9 in H. 76 cm/29,6 in  
[learn more](#)



**DECODIVA | DINING TABLE**  
 W. 220 cm/86,6 in D. 110 cm/43,3 in H. 76/29,9 in  
[learn more](#)



**MERVEILLE | DINING TABLE**  
 W. 250 cm/98,4 in D. 120 cm/47,2 in H. 76cm/29,9 in  
[learn more](#)



**PARIS | DINING TABLE**  
 W. 150 cm/59 in D. 150 cm/59 in H. 76 cm/29,9 in  
[learn more](#)



**YASMINE | DINING TABLE**  
 W. 152 cm/59,8 in D. 152 cm/59,8 in H. 79 cm/31 in  
[learn more](#)



**INTUITION | DINING TABLE**  
 W. 152 cm/59,8 in D. 152 cm/59,8 in H. 78 cm/30,7 in  
[learn more](#)



ALLURE | DINING TABLE  
W. 152 cm/59,8 in D. 152 cm/ 59,8 in H. 78 cm/30,7 in  
[learn more](#)



AVALANCHE | DINING TABLE  
W. 130 cm/51,2 in D. 130 cm/51,2 in H. 76 cm/29,9 in  
[learn more](#)



ENCHANTED | DINING TABLE  
W. 152 cm/59,8 in D. 152 cm/59,8 in H. 75 cm/29,5 in  
[learn more](#)



EXOTIC | ORMULU DESK  
W. 179 cm/70,5 in D. 75 cm/29,5 in H. 77 cm/30,3 in  
[learn more](#)



EXOTICA | DESK  
W. 166 cm/65,4 in D. 73 cm/28,7 in H. 79 cm/31,1 in  
[learn more](#)



“  
*Exuding feelings of  
fantasy, this highly  
coveted dressing table  
is bold, daring and  
seductive.*”





**KIKI | SIDE TABLE**  
 W. 70 cm/27,6 in D. 70 cm/27,6 in H. 70 cm/27,6 cm  
[learn more](#)



**ENCHANTED | SIDE TABLE**  
 W. 46 cm/18,1 in D. 46 cm/18,1 in H. 59 cm/23,2 in  
[learn more](#)



**GISELE | SIDE TABLE**  
 W. 70 cm/27,6 in D. 70 cm/27,6 in H. 70 cm/ 27,6 in  
[learn more](#)



**LEMPRICA | SIDE TABLE**  
 W. 68 cm/26,8 in D. 63 cm/24,8 in H. 66 cm/26 in  
[learn more](#)



**YASMINE | SIDE TABLE**  
 W. 64 cm/25,2 in D. 64 cm/25,2 in H. 58 cm/22,8 in  
[learn more](#)



**YASMINE II | SIDE TABLE**  
 W. 64 cm/25,2 in D. 64 cm/25,2 in H. 58 cm/22,8 in  
[learn more](#)



**EXOTICA | NIGHTSTAND**  
 W. 77 cm/30,3 in D. 51 cm/20,1 in H. 70 cm/27,6 in  
[learn more](#)



**CABRIOLE | NIGHTSTAND**  
 W. 60 cm/23,6 in D. 45 cm/17,7 in H. 64 cm/25,2 in  
[learn more](#)



**ORCHIDEA | NIGHTSTAND**  
 W. 82 cm/32,3 in D. 48 cm/19 in H. 63 cm/25 in  
[learn more](#)



**FLEUR | NIGHTSTAND**

W. 77 cm/30,3 in D. 39 cm/15,3 in H. 69 cm/27,2 in

[learn more](#)



**POEM | NIGHTSTAND**

W. 81 cm/32 in D. 51 cm/20,1 in H. 70 cm/27,6 in

[learn more](#)



**TAMARA I | NIGHTSTAND**

W. 73 cm/28,7 in D. 53 cm/20,9 in H. 74 cm/29,1 in

[learn more](#)



**EMBRACE | COCKTAIL TABLE OTTOMAN**

W. 140 cm/55,1 in D. 90 cm/35,4 in H. 47 cm/18,5 in

[learn more](#)



**RITA | COCKTAIL TABLE**

W. 107 cm/42,1 in D. 107 cm/42,1 in H. 42 cm/16,5 in

[learn more](#)



**RITA II | COCKTAIL TABLE**

W. 107 cm/42,1 in D. 107 cm/42,1 in H. 47 cm/18,5 in

[learn more](#)



**TAMARA II | NIGHTSTAND**

W. 73 cm/28,7 in D. 53 cm/20,9 in H. 74 cm/29,1 in

[learn more](#)



**SPELLBOUND | NIGHTSTAND**

W. 77 cm/30,3 in D. 53 cm/20,9 in H. 75 cm/29,5 in

[learn more](#)



**MINX | COFFEE TABLE**

W. 100 cm/39 in D. 80 cm/31,5 in H. 47 cm/18,5 in

[learn more](#)



**YASMINE | BAR TABLE**

W. 100 cm/39,3 in D. 100 cm/39,3 in H. 106 cm/41,7 in

[learn more](#)



**EUPHORIA | SCREEN**

W. 164 cm/64,6 in D. 5,5 cm/2,2 in H. 210 cm/82,7 in

[learn more](#)



**TABU | COCKTAIL TABLE**

W. 150 cm/59 in D. 62 cm/24,4 in H. 40 cm/15,7 in

[learn more](#)



**TEARS | COCKTAIL TABLE**

W. 90 cm/35,4 in D. 106 cm/41,7 in H. 37 cm/14,6 in

[learn more](#)

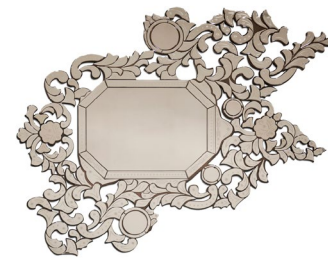


**TEARS II | COCKTAIL TABLE**

W. 90 cm/35,4 in D. 106 cm/41,7 in H. 37 cm/14,6 in

[learn more](#)

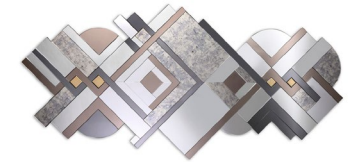




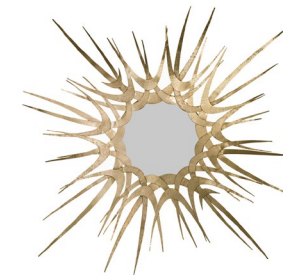
**ADDICTA | MIRROR**  
 W. 205 cm/80,7 in D. 2,5 cm/0,9 in H. 164 cm/64,5 in  
[learn more](#)



**EGOIST | MIRROR**  
 W. 200 cm/78,7 in D. 4 cm/1,6 in H. 81 cm/31,9 in  
[learn more](#)



**LEMPRICA | MIRROR**  
 W. 200 cm/78,7 in D. 4 cm/1,6 in H. 91 cm/35,8 in  
[learn more](#)



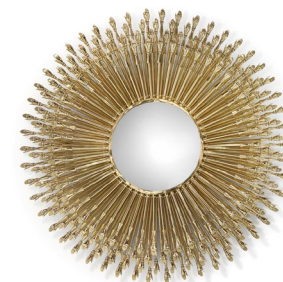
**GUILT | MIRROR**  
 W. 187 cm/73,6 in D. 10 cm/3,9 in H. 187 cm/73,6 in  
[learn more](#)



**REVÊ | MIRROR**  
 W. 145 cm/57,1 in D. 30 cm/11,8 in H. 145 cm/57,1 in  
[learn more](#)



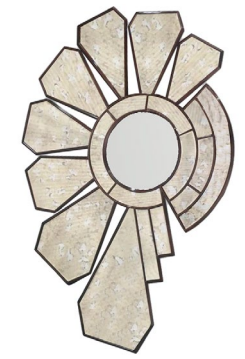
**REVÊ III | MIRROR**  
 W. 120 cm/47,2 in D. 25 cm/9,8 in H. 120 cm/47,2 in  
[learn more](#)



**GODDESS | MIRROR**  
 W. 150 cm/59,1 in D. 20 cm/7,9 in H. 150 cm/59,1 in  
[learn more](#)



**STELLA | MIRROR**  
 W. 129 cm/50,8 in D. 11 cm/4,3 in H. 129 cm/50,8 in  
[learn more](#)



**BELLA | MIRROR**  
 W. 155 cm/61 in D. 4,5 cm/1,7 in H. 222 cm/87,4 in  
[learn more](#)



**SERPENTINE | MIRROR**

W. 105 cm/41,3 in D. 8 cm/3,2 in H. 135 cm/53,2 in  
[learn more](#)



**SERPENTINE II | MIRROR**

W. 135,8 cm/53,5 in D. 9,4 cm/3,7 in H. 126 cm/49,6 in  
[learn more](#)



**TAMARA I | MIRROR**

W. 100 cm/39 in D. 12 cm/4,7 in H. 90 cm/35,1 in  
[learn more](#)



**TAMARA II | MIRROR**

W. 200,5 cm/78,9 in D. 12 cm/4,7 in H. 91 cm/35,8 in  
[learn more](#)





**BLOOM | CHAIR**  
 W. 88 cm/34,7 in D. 75 cm/29,5 in H. 84 cm/33,1 in  
[learn more](#)



**BLOOM II | CHAIR**  
 W. 88 cm/34,7 in D. 75 cm/29,5 in H. 84 cm/33,1 in  
[learn more](#)



**BLOOM III | CHAIR**  
 W. 88 cm/34,7 in D. 75 cm/29,5 in H. 84 cm/33,1 in  
[learn more](#)



**AUDREY | CHAIR**  
 W. 89 cm/35 in D. 80 cm/31,5 in H. 85 cm/33,4 in  
[learn more](#)



**COCKTAIL | CHAIR**  
 W. 86 cm/33,8 in D. 80 cm/31,5 in H. 74 cm/29,1 in  
[learn more](#)



**BESAME | CHAIR**  
 W. 85 cm/33,4 in D. 77 cm/30,3 in H. 75 cm/29,5 in  
[learn more](#)



**COUNTESS | CHAIR**  
 W. 86 cm/33,9 in D. 74 cm/29,1 in H. 81 cm/31,9 in  
[learn more](#)



**NAOMI | CHAIR**  
 W. 70 cm/27,6 in D. 85 cm/33,5 in H. 83 cm/32,7 in  
[learn more](#)



**DESIRE | CHAIR**  
 W. 86 cm/33,9 in D. 73 cm/29,7 in H. 74 cm/29,1 in  
[learn more](#)





**MANDY | CHAIR**

W. 95 cm/37,4 in D. 90 cm/35,4 in H. 81 cm/31,8 in

[learn more](#)



**MIA | CHAIR**

W. 83 cm/32,6 in D. 75 cm/29,5 in H. 82/32,2 in

[learn more](#)



**LOVELY | CHAIR**

W. 77 cm/30,3 in D. 76 cm/29,9 in H. 80 cm/31,5 in

[learn more](#)



**DENISE | CHAIR**

W. 84,6 cm/33,3 in D. 76,9 cm/30,3 in H. 83 cm/32,7 in

[learn more](#)



**CUFF | CHAIR**

W. 67 cm/26,4 in D. 56 cm/22,1 in H. 83,5 cm/32,9 in

[learn more](#)



**DRAPESSE | CHAIR**

W. 84 cm/33,1 in D. 77 cm/30,3 in H. 160 cm/63 in

[learn more](#)



**DÉLICE | CHAIR**

W. 65 cm/25,6 in D. 70 cm/27,6 in H. 77 cm/30,3 in

[learn more](#)



**DELICIOSA | CHAIR**

W. 65 cm/25,6 in D. 70 cm/27,6 in H. 77 cm/30,3 in

[learn more](#)



**BESAME II | CHAIR**

W. 85 cm/33,5 in D. 77 cm/30,3 in H. 75 cm/29,5 in

[learn more](#)



**HEMMA | CHAIR**

W. 62 cm/24,4 in D. 63 cm/ 24,8 in H.92 cm/36,2 in

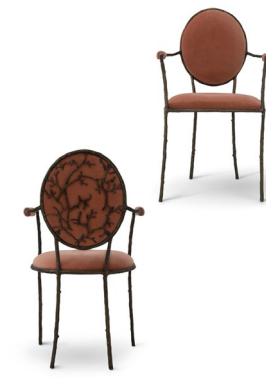
[learn more](#)



**ANASTASIA | DINING CHAIR**

W. 65 cm/25,6 in D. 70 cm/27,6 in H. 102 cm/40,2 in

[learn more](#)



**ENCHANTED II | DINING CHAIR**

W. 55,5 cm/21,9 in D. 57 cm/22,4 in H. 96,5 cm/38 in

[learn more](#)



**CHICLET | CHAIR**

W. 98 cm/38,6 in D. 75/29,5 in H. 85 cm/33,5 in

[learn more](#)



**GEISHA | CHAIR**

W. 74 cm/29,1 in D. 84 cm/33,1 in H. 85 cm/33,5 in

[learn more](#)



**MIMI | CHAIR**

W. 86 cm/33,9 in D. 67 cm/26,4 in H. 84 cm/33,1 in

[learn more](#)



**ENCHANTED | DINING CHAIR**

W. 51 cm/20,1 in D. 57 cm/22,4 in H. 96,5 cm/38 in

[learn more](#)



**ASIA | CHAIR**

W.64 cm/25,2 in D. 53 cm/20,9 in H. 88 cm/34,7 in

[learn more](#)



**CHANDRA | DINING CHAIR**

W. 60 cm/23,6 in D. 43 cm/16,9 in H. 83 cm/32,7 in

[learn more](#)



**CHANDRA | CHAIR**

W. 60 cm/23,6 in D. 46 cm/18,1 in H. 76 cm/29,9 in

[\*learn more\*](#)



**MERVEILLE | DINING CHAIR**

W.45 cm/17,7 in D. 53 cm/20,9 in H. 91 cm/35,8 in

[\*learn more\*](#)



**NAHÉMA | CHAIR**

W. 60 cm/23,6 in D. 50 cm/19,7 in H. 80 cm/31,5 in

[\*learn more\*](#)





**KELLY | SOFA**  
 W. 243 cm/95,7 in D.87 cm/34,3 in H. 88 cm/34,7 in  
[learn more](#)



**COLETTE | SOFA**  
 W. 251 cm/98,8 in D. 75 cm/29,5 in H. 75 cm/29,5 in  
[learn more](#)



**COLETTE II | SOFA**  
 W. 251 cm/98,8 in D. 75 cm/29,5 in H. 75 cm/29,5 in  
[learn more](#)



**VAMP | SOFA**  
 W. 262 cm/100 in D. 132 cm/52 in H.93 cm/35,4 in  
[learn more](#)



**VAMP II | SOFA**  
 W. 262 cm/100 in D. 132 cm/52 in H. 93 cm/35,4 in  
[learn more](#)



**ENTICE | SOFA**  
 W. 350 cm/137,8 in D. 180 cm/70,8 in H. 80 cm/31,5 in  
[learn more](#)



**LUSCIOUS | SOFA**  
 W. 235 cm/192,5 in D. 99 cm/39 in H. 80 cm/31,5 in  
[learn more](#)



**GEISHA CURVE | SOFA**  
 W. 250 cm/ 98,4 in D. 110 cm/43,3 in H. 85 cm/33,1 in  
[learn more](#)



**CAPRICHOSA | SOFA**  
 W. 245 cm/96,5 in D. 97 cm/38,2 in H. 104 cm/40,9 in  
[learn more](#)



**MIA | SOFA**

W. 220 cm/86,6 in D. 78 cm/30,7 in H. 84 cm/33,1 in

[learn more](#)



**BLOOM | SOFA**

W. 220 cm/86,6 in D. 78 cm/30,7 in H. 84 cm/33,1 in

[learn more](#)



**SEVILLIANA | SOFA**

W. 210 cm/82 in D. 100 cm/39 in H. 83 cm/32,4 in

[learn more](#)



**CAPRICHOSA II | SOFA**

W. 245 cm/96,5 in D. 97 cm/38,2 in H. 104 cm/40,9 in

[learn more](#)



**SOFIA | SOFA**

W. 245 cm/96,5 in D. 94 cm/37 in H. 90 cm/35,4 in

[learn more](#)



**BESAME | 2 SEAT SOFA**

W. 140 cm/55,1 in D. 73 cm/28,7 in H. 83 cm/32,7 in

[learn more](#)



**KELLY II | 2 SEAT SOFA**

W. 140 cm/55,1 in D. 78 cm/30,7 in H. 87 cm/34,3 in

[learn more](#)



**MANDY | SOFA**

W. 171 cm/67,3 in D. 80 cm/31,5 in H. 77 cm/30,3 in

[learn more](#)



**ENCHANTED | SOFA**

W. 180 cm/70,9 in D. 82 cm/32,3 in H. 82 cm/32,3 in

[learn more](#)





## REPTILIA | SOFA

W. 390 cm/153,4 in D.170 cm/66,9 in H. 87 cm/34,3 in

[\*learn more\*](#)





**DESIRE | SOFA**

W. 154 cm/60,6 in D. 73 cm/28,7 in H. 72 cm/28,4 in

[\*learn more\*](#)



**DÉLICE | SOFA**

W. 140 cm/55,1 in D. 70 cm/27,6 in H. 77 cm/30,3 in

[\*learn more\*](#)



**DELICIOSA | SOFA**

W. 140 cm/55,1 in D. 70 cm/27,6 in H. 77 cm/30,3 in

[\*learn more\*](#)



**GEISHA | SOFA**

W. 130 cm/51,2 in D. 84 cm/33,1 in H. 85 cm/33,5 in

[\*learn more\*](#)



**DRAPESSE | SOFA**

W. 168 cm/66,2 in D. 83 cm/32,7 in H. 160 cm/63 in

[\*learn more\*](#)



**MILLICENT | CHAISE**

W. 180 cm/70,9 in D. 70 cm/27,6 in H. 72 cm/28,4 in

[\*learn more\*](#)



**ZEBA | CHAISE**

W. 160 cm/ 62,9 in D. 70 cm/27,5 in H. 83 cm/32,6 in

[\*learn more\*](#)



**ENVY | CHAISE**

W. 187 cm/73,62 in D. 72 cm/28,4 in H. 91 cm/35,9 in

[\*learn more\*](#)



**PRIVÉ | DAY BED**

W. 172 cm/67,7 in D. 60 cm/23,6 in H. 65 cm/25,6 in

[\*learn more\*](#)





**LUNA | BENCH**

W. 195 cm/76,8 in D. 63 cm/24,8 in H. 73 cm/28,8 in  
[learn more](#)



**LÉ-LÉ | BENCH**

W. 140 cm/55,1 in D. 48 cm/18,9 in H. 56 cm/22,5 in  
[learn more](#)



**IGNITE | BENCH**

W. 160 cm/63 in D. 58 cm/22,8 in H. 43 cm/16,9 in  
[learn more](#)



**MIMI | BAR STOOL**

W. 70 cm/27,6 in D. 59 cm/23,2 in H. 116 cm/45,7 in  
[learn more](#)



**DÉLICE | BAR STOOL**

W. 50 cm/19,7 in D. 48 cm/18,9 in H. 110 cm/43,3 in  
[learn more](#)



**DELICIOSA | BAR STOOL**

W. 64 cm/25,2 in D. 57,5 cm/22,7 in H. 102,6 cm/40,4 in  
[learn more](#)



**MIA | OTTOMAN**

W. 140 cm/55,1 in D. 140 cm/55,1 in H. 47 cm/18,5 in  
[learn more](#)



**MISTRESS | CONFIDANTE**

W. 154 cm/60,6 in D. 154 cm/60,6 in H. 100 cm/39,4 in  
[learn more](#)



**GEISHA | BAR STOOL**

W. 59 cm/23,2 in D. 57 cm/22,4 in H. 112 cm/44,1 in  
[learn more](#)



**ENCHANTED | BAR STOOL**

W. 53,5 cm/21,1 in D. 50 cm/19,7 in H. 107 cm/42,1 in  
[learn more](#)



**MANDY | STOOL**

W. 55,5 cm/21,9 in D. 36 cm/14,2 in H. 48 cm/18,9 in  
[learn more](#)



**BOLVARDI | BENCH**

W. 58 cm/22,8 in D. 33 cm/13 in H. 53 cm/20,9 in  
[learn more](#)



**NAHÉMA | BAR STOOL**

W. 53 cm/20,9 in D. 48 cm/18,9 in H. 110 cm/43,3 in  
[learn more](#)



**CHANDRA | BAR STOOL**

W. 58 cm/22,8 in D. 47 cm/18,5 in H. 98,5 cm/38,8 in  
[learn more](#)



**CHANDRA | COUNTER STOOL**

W. 58 cm/22,8 in D. 47 cm/18,5 in H. 87,5 cm/34,5 in  
[learn more](#)



**MIA | PUFF**

W. 41 cm/16,1 in D. 41 cm/16,1 in H. 47 cm/18,5 in  
[learn more](#)



### ALEXIA | BED

Queen: W. 270 cm/106,3 in King: W. 290 cm/114,2 in  
D. 220 cm/86,6 in D. 220 cm/86,6 in  
H. 160 cm/63 in H. 160 cm/63 in

[learn more](#)



### FORBIBBEN I | BED

Queen: W. 236 cm/92,9 in King: W. 256 cm/100,8 in  
D. 240 cm/94,5 in D. 240 cm/94,5 in  
H. 160 cm/63 in H. 160 cm/63 in

[learn more](#)



### FORBIBBEN II | BED

Queen: W. 236 cm/92,9 in King: W. 256 cm/100,8 in  
D. 240 cm/94,5 in D. 240 cm/94,5 in  
H. 160 cm/63 in H. 160 cm/63 in

[learn more](#)



### FORBIBBEN III | BED

Queen: W. 236 cm/92,9 in King: W. 256 cm/100,8 in  
D. 240 cm/94,5 in D. 240 cm/94,5 in  
H. 160 cm/63 in H. 160 cm/63 in

[learn more](#)



### SEVILLIANA | BED

Queen: W. 234 cm/92,1 in King: W. 254 cm/100 in  
D. 225 cm/88,6 in D. 225 cm/88,6 in  
H. 160 cm/63 in H. 160 cm/63 in

[learn more](#)



### KELLY | BED

Queen: W. 264 cm/103,9 in King: W. 284 cm/111,8 in  
D. 225 cm/88,6 in D. 225 cm/88,6 in  
H. 160 cm/63 in H. 160 cm/63 in

[learn more](#)



### PLISSE | BED

Queen: W. 240 cm/94,5 in King: W. 260 cm/102,4 in  
D. 220 cm/86,6 in D. 220 cm/86,6 in  
H. 160 cm/63 in H. 160 cm/63 in

[learn more](#)



### CAPRICHOSA | BED

Queen: W. 260 cm/102,4 in King: W. 280 cm/110,2 in  
D. 225 cm/88,6 in D. 225 cm/88,6 in  
H. 160 cm/63 in H. 160 cm/63 in

[learn more](#)







**GIA I | CHANDELIER**  
 W. 80 cm/31,2 in D. 80 cm/31,2 in H. 200 cm/78 in  
[learn more](#)



**GIA II | CHANDELIER**  
 W. 45 cm/17,72 in D. 45 cm/17,72 in H. 200 cm/78 in  
[learn more](#)



**ETERNITY I | CHANDELIER**  
 W. 80 cm/31,2 in D. 80 cm/31,2 in H. 28 cm/11 in  
[learn more](#)



**ETERNITY II | CHANDELIER**  
 W. 80 cm/31,2 in D. 80 cm/31,2 in H. 10 cm/3,9 in  
[learn more](#)



**ETERNITY III | CHANDELIER**  
 W. 80 cm/31,2 in D. 120 cm/46,8 in H. 30 cm/11,7 in  
[learn more](#)



**ETERNITY IV | CHANDELIER**  
 W. 80 cm/31,2 in D. 120 cm/46,8 in H. 30 cm/11,7 in  
[learn more](#)



**ETERNITY V | CHANDELIER**  
 W. 120 cm/47,2 in D. 120 cm/47,2 in H. 73 cm/28,7 in  
[learn more](#)



**TRINITY | CHANDELIER**  
 W. 101,4 cm/40 in D. 101,4 cm/40 in H. 35 cm/13,8 in  
[learn more](#)



**OUTBURST | CHANDELIER**  
 W. 120 cm/47,2 in D. 120 cm/47,2 in H. 120 cm/47,2 in  
[learn more](#)



**VIVRE | CHANDELIER**  
W. 72 cm/28,3 in D. 72 cm/28,3 in H. 40 cm/15,8 in  
[learn more](#)



**VIVRE RECT. | CHANDELIER**  
W. 105,5 cm/42,5 in D. 43 cm/16,9 in H. 41 cm/16,1 in  
[learn more](#)



**VIVRE SQUARE | CHANDELIER**  
W. 72cm/28,3 in D. 72/28,3 in H. 40 cm/15,8 in  
[learn more](#)



**VIVRE 2 RINGS | CHANDELIER**  
W. 80 cm/31,4 in D. 80 cm/31,4 in H. 82 cm/32,2 in  
[learn more](#)



**SERPENTINE | CHANDELIER**  
W. 100 cm/ 39,4 in D. 100 cm/39,4 in H. 75 cm/29,5 in  
[learn more](#)



**KASEHSIAH | CHANDELIER**  
W. 60 cm/23,6 in D. 60 cm/23,6 in H. 15 cm/6 in  
[learn more](#)



**NYMPH | CHANDELIER**  
W. 85 cm/33 in D. 85 cm/33 in H. 70 cm/27,5 in  
[learn more](#)



**HYPNOTIC | CHANDELIER**  
W. 85 cm/ 33,5 in D. 85 cm/33,5 in H. 56 cm/22 in  
[learn more](#)



**ROXY | CHANDELIER**  
W. 80 cm/31,5 in D. 80 cm/31,5 in H. 80 cm/31,5 in  
[learn more](#)





**BRILLIANCE | SCONCE**  
 W. 70 cm/27,5 in D. 70 cm/27,5 in H. 12 cm/4,7 in  
[learn more](#)



**PASSION | SCONCE**  
 W. 32 cm/12,6 in D. 11 cm/4,3 in H. 38 cm/14,9 in  
[learn more](#)



**MUSE | SCONCE**  
 W. 28 cm/11 in D. 12 cm/4,7 in H. 47 cm/18,5 in  
[learn more](#)



**HYPNOTIC | SCONCE**  
 W. 40 cm/15,8 in D. 13,5 cm/5,3 in H. 65/25,6 in  
[learn more](#)



**CHLOE | SCONCE**  
 W. 28 cm/11 in D. 18 cm/7 in H. 48 cm/18,8 in  
[learn more](#)



**NYMPH | SCONCE**  
 W. 28 cm/11 in D. 19 cm/7,4 in H. 70 cm/27,5 in  
[learn more](#)



**BOTANICA | SCONCE**  
 W. 50 cm/19,6 in D. 13 cm/5,1 in H. 70 cm/27,5 in  
[learn more](#)



**FLORA | SCONCE**  
 W. 13,5 cm/5,3 in D. 20 cm/7,8 in H. 71 cm/27,9 in  
[learn more](#)



**VIVRE | SCONCE**  
 W. 22 cm/8,7 in D. 10 cm/3,9 in H. 41 cm/16,1 in  
[learn more](#)



**PLUMA | SCONCE**

W. 24 cm/9,5 in D. 12 cm/4,7 in H. 58 cm/22,8 in

[\*learn more\*](#)



**SERPENTINE | SCONCE**

W. 29 cm/11,4 in D. 16 cm/6,3 in H. 90 cm/35,4 in

[\*learn more\*](#)



**ETERNITY | SCONCE**

W. 25 cm/9,8 in D. 10 cm/3,9 in H. 58 cm/22,8 in

[\*learn more\*](#)



**ETERNITY II | SCONCE**

W. 25 cm/9,8 in D. 10 cm/3,9 in H. 58 cm/22,8 in

[\*learn more\*](#)



**ETERNITY III | SCONCE**

W. 25 cm/9,8 in D. 10 cm/3,9 in H. 58 cm/22,8 in

[\*learn more\*](#)



**ETERNITY | SCULPTURE**

W. 45,5 cm/17,9 in D. 13 cm/5,1 in H. 120 cm/47,2 in

[\*learn more\*](#)



**ORCHIDEA | SCULPTURE**

W. 162,9 cm/64,1 in D. 30,4 cm/12 in H. 88,9 cm/35 in

[\*learn more\*](#)



**GIA | PENDANT**

W. 20 cm/7,9 in D. 20 cm/7,9 in H. 24 cm/9,5 in

[\*learn more\*](#)



**GEM | TABLE LAMP**

W. 33 cm/12,9 in D. 28,5 cm/11,2 in H. 85 cm/33,4 in

[learn more](#)



**VENGEANCE | TABLE LAMP**

W. 50 cm/19,7 in D. 50 cm/19,7 in H. 90 cm/35,4 in

[learn more](#)



**RUCHÊ | TABLE LAMP**

W. 45 cm/17,7 in D. 45 cm/17,7 in H. 95 cm/37,4 in

[learn more](#)



**REPTILIAN | TABLE LAMP**

W. 45 cm/17,7 in D. 45 cm/17,7 in H. 97 cm/38,1 in

[learn more](#)



**REPTILIAN | FLOOR LAMP**

W. 50 cm/19,7 in D. 50 cm/19,7 in H. 185 cm/72,8 in

[learn more](#)



**LOTUS | FLOOR LAMP**

W. 47 cm/18,5 in D. 47 cm/18,5 in H. 208 cm/81,8 in

[learn more](#)



# *exotic opulence* COLLECTION

## *TEXTILES & WALLCOVERINGS*

This lavish collection is the beginning of a beautiful life. Cover your home in KOKET with our opulent Textiles and Wallcoverings. Composed of silky satins, supple leathers, delicate sheers and plush velvets, our opulent textile collection is full of exotic patterns, glimmering metallics and rich hues that will seduce you into a world of desire and escapism. Decadent wallcoverings of birds feathers combined in various mesmerizing patterns of owing waves, natural stripes and diamond crisscross add a sassy and exotic KOKET air. Transform simple walls into a natural work of art with effortlessly blending hues of rich blues and greens, natural tans and beiges dappled with hints of chocolat brown and black, and deep purple swirled with navy.

## *SOFT GOODS*

Layer your home in plush elegance with KOKET's collection of soft goods, part of the Exotic Opulence collection. Decadent natural fur throws of rabbit, fox or mink will drape your upholstery with abandon and give you radiant warmth for cozy moments. Accompanying fur pillows and cowhide rugs add a natural sophistication to any decor. Made from only the best, natural materials, KOKET soft goods are the ultimate indulgence for your home.

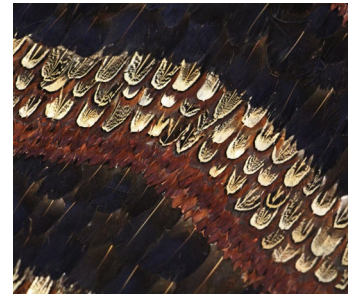
1. SPELLBOUND | Cabinet 2. DENISE | Chair 3. ORILAG GRAY AND BROWN | Pillows  
4. BRONZE PETRA FLASH | Rug 5. METAL BRONZE | Leather



QUAIL FEATHERS



PEACOCK AND PHEASANT  
CARAMEL FEATHERS



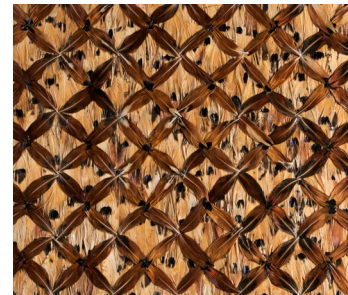
PEACOCK AND PHEASANT  
PURPLE FEATHERS



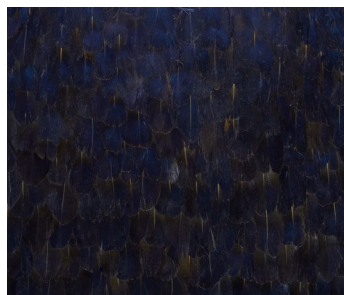
IRIDISCENT PEACOCK  
FEATHERS



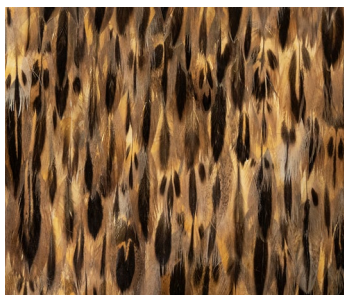
PEACOCK ORGANIC  
FEATHERS



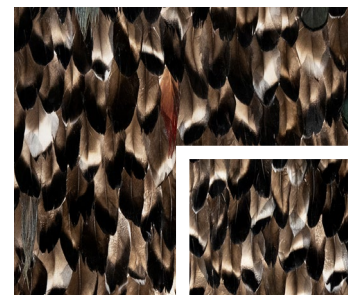
TIGER FEATHERS



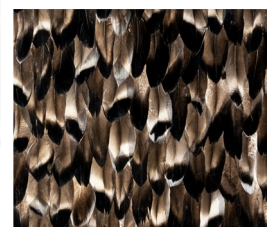
PURPLE FEATHERS



GOLDEN FEATHERS



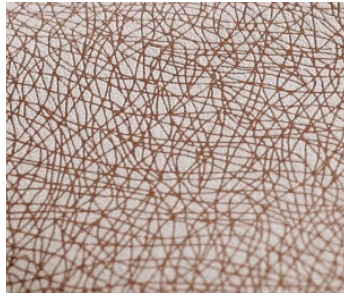
FOLIE  
FEATHERS



BLACK  
SMOKE FEATHERS



1. GISELE | Side Table 2. SPELLBOUND | Nightstand



GLAMOUR

Available colors: 5



SALAMANDER

Available colors: 5



CRICO

Available colors: 5



RAPHIA

Available colors: 3



METAL

Available colors: 6



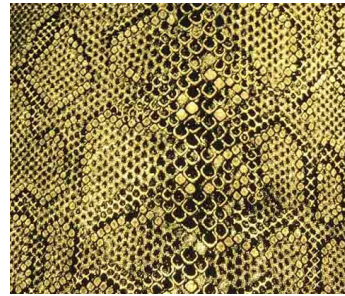
OYSTER

Available colors: 89



PIXEL

Available colors: 2



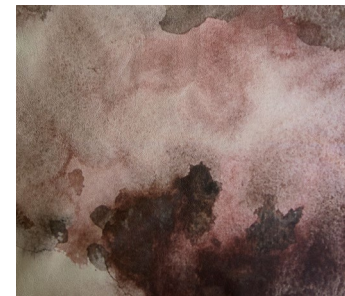
SAURIA

Available colors: 4



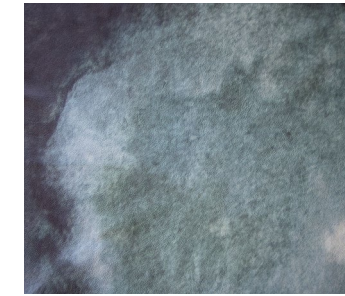
BITIS

Available colors: 3



TERRA

Available colors: 1



AQUA

Available colors: 1



STINGRAY

Available colors: 2



HARBOR

Available colors: 99



NAKURU

Available colors: 3





NOMAD

Available colors: 8



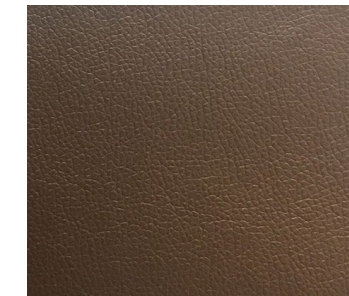
PEARL

Available colors: 10



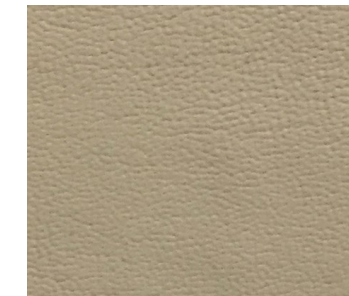
LUX

Available colors: 5



BRISTOL

Available colors: 3



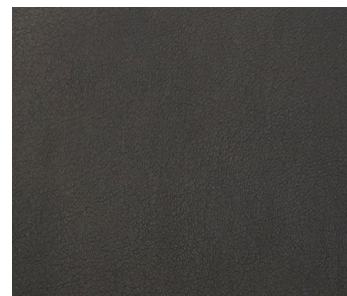
JET

Available colors: 20



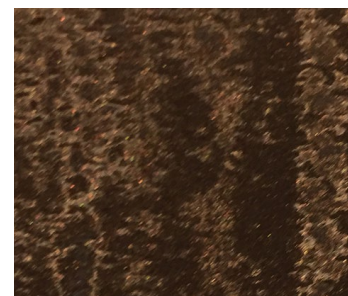
MOREIA

Available colors: 6



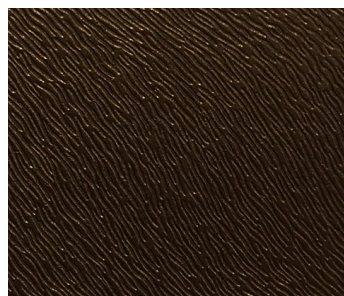
KOMODO

Available colors: 10



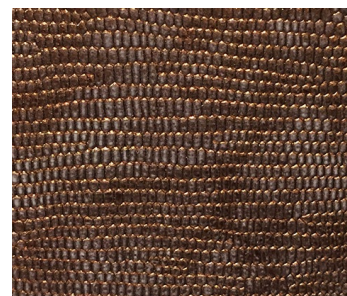
HALL

Available colors: 10



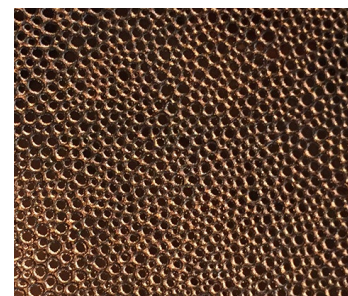
NADLER

Available colors: 12



OFIDIA

Available colors: 6



BRIGHT SHARK

Available colors: 7



1. DELICIOSA | Bar Stool 2. NADLER 3444 | Synthetic Leather



SILKY VELVET

Available colors: 32



LUX VELVET

Available colors: 62



PARIS VELVET

Available colors: 37



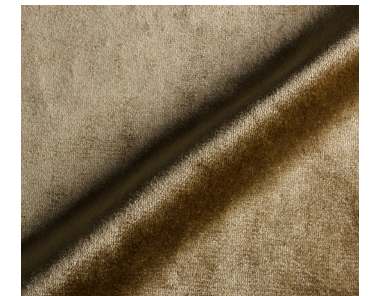
CRUSHED VELVET

Available colors: 10



COZY VELVET

Available colors: 23



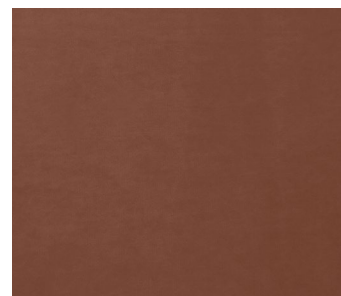
LUSTROUS VELVET

Available colors: 9



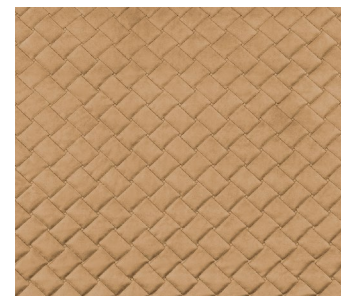
RADIANCE VELVET

Available colors: 28



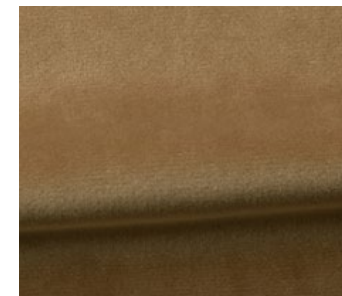
SMOOTH VELVET

Available colors: 24



CLOUD VELVET

Available colors: 16



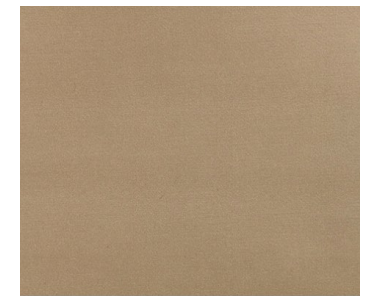
VENICE VELVET

Available colors: 40



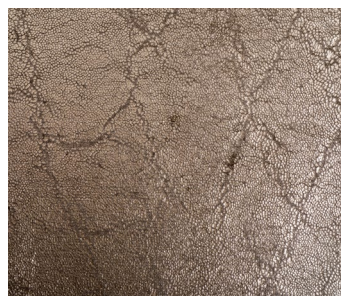
ULTRA SUEDE

Available colors: 47



SATINA LUX

Available colors: 13



INTERACTION

Available colors: 5



IRIDISCENT LUX PYTHON

Available colors: 1



HIDE VELVET

Available colors: 25



LASER CUT RABBIT

Available Sizes  
120 x 180 cm / 47 x 71"  
180 x 240 cm / 71 x 95"



RABBIT W/ LEATHER

Available Sizes  
120 x 180 cm / 47 x 71"  
180 x 240 cm / 71 x 95"



REX RABBIT

Available Sizes  
120 x 180 cm / 47 x 71"  
180 x 240 cm / 71 x 95"



LASER CUT RABBIT

Available Sizes  
30 x 60 cm / 12 x 24"  
60 x 60 cm / 24 x 24"



ORILAG PILLOW (GRAY)

Available Sizes  
38 x 50 cm / 15 x 20"  
80 x 80 cm / 31 x 31"



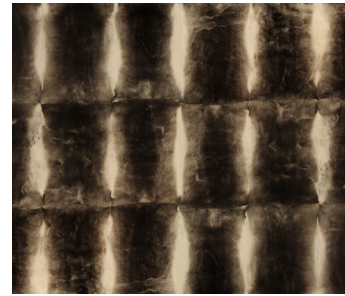
ORILAG PILLOW (BROWN)

Available Sizes  
38 x 50 cm / 15 x 20"  
80 x 80 cm / 31 x 31"



ORILAG BROWN

Available Sizes  
120 x 180 cm / 47 x 71"  
180 x 200 cm / 71 x 79"



ORILAG GRAY

Available Sizes  
120 x 180 cm / 47 x 71"  
180 x 200 cm / 71 x 79"



MINK

Available Sizes  
120 x 200 cm / 47 x 79"



FINLAND FOX

Available Sizes  
30 x 60 cm / 12 x 24"  
60 x 60 cm / 24 x 24"



POLAR FOX

Available Sizes  
30 x 40 cm / 12 x 16"  
70 x 70 cm / 28 x 28"



SILVER FOX

Available Sizes  
30 x 60 cm / 12 x 24"  
60 x 60 cm / 24 x 24"



FINLAND FOX

Available Sizes  
120 x 200 cm / 47 x 79"  
140 x 200 cm / 55 x 79"





**STINGRAY EMBOSSED  
COWHIDE**

**Available Sizes**

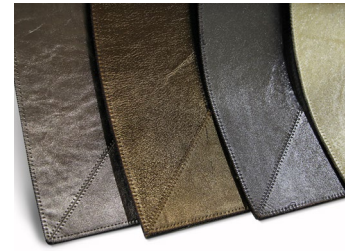
140 x 200 cm / 4,60 x 6,55 ft  
200 x 260 cm / 6,55 x 8,53 ft  
260 x 320 cm / 8,53 x 10,5 ft



**COBRA**

**Available Sizes**

140 x 200 cm / 4,60 x 6,55 ft  
200 x 260 cm / 6,55 x 8,53 ft  
260 x 320 cm / 8,53 x 10,5 ft



**COWHIDE W/METALLIC**

**Available Sizes**

140 x 200 cm / 4,60 x 6,55 ft  
170 x 230 cm / 5,55 x 7,55 ft  
200 x 290 cm / 6,55 x 9,50 ft



**COWHIDE W/MERINO LAMB**

**Available Sizes**

145 x 180 cm / 4,75 x 5,90 ft  
180 x 250 cm / 5,90 x 8,20 ft  
250 x 320 cm / 8,20 x 10,50 ft



**COWHIDE W/MONGOLIAN  
GOAT**

**Available Sizes**

140 x 200 cm / 4,60 x 6,55 ft  
170 x 230 cm / 5,55 x 7,55 ft  
200 x 290 cm / 6,55 x 9,50 ft



**PETRA FLASH RUG**

**Available Sizes**

140 x 200 cm / 4,60 x 6,55 ft  
170 x 230 cm / 5,55 x 7,55 ft  
200 x 290 cm / 6,55 x 9,50 ft





1. DIVINE DRAWER | Handle

# KOKET's finishes

2. BURLESQUE  
BLACK CRYSTAL | Pull

3. LUSTROUS VELVET | Fabric

4. EXOTICA | Handle

5. ENCHANTED BRASS | Applique

6. AGATE | Stones

7. ORCHIDEA FLOWER | Applique

8. NYMPH BUTTERFLY | Applique

9. VIVRE BRASS | Applique

10. MOTHER OF PEARL | Finishe

11. POPLAR VENEER | Wood

hammered copper  
plated brass

aged mirror

iridescent  
caramel

aged brass

12. EXOTICA | Applique



*From the creative minds of KOKET emerges a fresh, youthful and irresistible new line — meet KK by KOKET! With delectable design, fast delivery and soft pricing you are sure to fall head over heels in love!*



*An irresistibly youthful KOKET*



KK BY KOKET  
[www.kkbykoket.com](http://www.kkbykoket.com)

# BESPOKE *design*

KOKET offers custom design solutions which allow you to tailor our pieces to meet your specific design requirements. Our head designer will work with you to ensure all your needs are met, and our skilled team of artisans will turn your ideas into reality.

*by koket*

[www.bykoket.com](http://www.bykoket.com)

## Terms & Conditions

### ORDERS ARE SUBJECT TO ACCEPTANCE

All orders are subject to acceptance by the wholesaler ("Seller") of the Product Line ("Manufacturer").

Buyer ("Buyer") is defined as the person, firm or company, authority or government department, which purchases the Goods from the Seller.

### ENTIRE AGREEMENT

Acceptance of orders is based on the express condition that buyer agrees to all of the terms and conditions contained herein.

Acceptance of delivery by buyer will constitute buyer's assent to these terms and conditions. These terms and conditions represent the complete agreement of the parties, and no terms or conditions in any way adding to, modifying, or otherwise changing the provisions stated herein, shall be binding upon manufacturer unless prior written approval is signed and approved by an officer of manufacturer. No modification of any of these terms will be affected by manufacturer's shipment of goods following receipt of buyer's purchase order, shipping request or similar forms containing printed terms and conditions conflicting or inconsistent with the terms herein.

### FORCE MAJEURE

All quoted completion and delivery dates are estimates only. KOKET shall not be liable for delays in completion, shipment, or default in delivery for any reason of force majeure or for any cause beyond Manufacturer's or KOKET's reasonable control including, but not limited to, (a) government action, war, riots, civil commotion, embargoes or martial laws, (b) Manufacturer's inability to obtain necessary materials from its usual sources of supply, (c) shortage of labor, raw material, production or transportation facilities or other delays in transit, (d) labor difficulty involving employees of Manufacturer or others, (e) fire, flood or other casualty, or (f) other contingencies of manufacture or shipment. In the event of any delay in Manufacturer's performance due in whole or in part to any cause beyond Manufacturer's reasonable control, Manufacturer shall have such additional time for performance as may be reasonably necessary under the circumstances. Acceptance by Buyer of any goods shall constitute a waiver by Buyer of any claim for damages on account of any delay in delivery of such goods.

### INTERNET POLICY

Dealer internet websites may neither advertise, nor in any way, display the KOKET name, logo, product images or any other proprietary company emblems or information without prior written consent from the company. Dealer websites may not display pricing lower than KOKET's MSRP. Please contact KOKET for further company guidelines on internet usage.

### PRICING

We reserve the right, without prior notice, to discontinue products or change specifications and prices on products. Prices always refer to one unit and are FOB Virginia (KOKET's US warehouse) for USA & Canada clients, and Ex-Works Rio Tinto, Portugal (KOKET's PT warehouse) for clients around the world. All pricing is determined by qualification of customer. Packaging is always included in our price; however if the customer requires specific packaging, they will be charged accordingly.

### TAXES

All taxes and excises of any nature whatsoever now or hereafter levied by governmental authority, whether federal, state or local, either directly or indirectly, upon the sale or transportation of any goods covered, hereby, shall be paid and borne by Buyer.

### ACCOUNTS & ORDER TERMS

There are no required minimums when purchasing at Designer Net pricing. Open credit terms will be considered on a case by case basis after the first pro-forma order. Balance is due upon completion, prior to shipping of merchandise. Upon completion, clients will have a total of four (4) weeks from the date they are notified for their final payment to pay all remaining balances on their order and to make the necessary transport arrangements. If an order is paid in full but still remains in storage in KOKET's warehouse, the storage fees will still be applicable after the four (4) weeks grace period. Only after the payment of such fees can the goods be picked up by the client. These fees are outlined in PRODUCT AND STORAGE FEES section.

All pieces are the property of KOKET until payment is received in full. KOKET reserves the right to defer the dispatch date until the balance of the order is received. All orders in the amount of \$3,500 or less will require payment in full prior to processing the order.

### NET PRICING QUALIFICATIONS

Incomplete Commercial Account Applications will not be accepted. For U.S. clients to receive net pricing, a U.S. tax exemption ID certificate or reseller's license is required for an account, or both items below:

1. Proof of valid membership (e.g. current membership ID) in one of these organizations:

- . ASID American Society of Interior Designers, or international affiliate
- . IIDA International Interior Design Association
- . IDS Interior Design Association
- . IDS Interior Design Society
- . CID Certified Interior Designers International
- . National Council for Interior Design
- . Qualification certificate number

2. Business Card

For customers outside the U.S., a copy of commercial registration of the company, related to interior design, architecture or reselling of furniture is also acceptable, having to be in English and correspondent to the Company in the Commercial Account Application - that will originate the "Bill To" client account.

## Terms & Conditions

### CONTRACT/CUSTOM ORDERS:

KOKET has the ability to customize existing products or new products to meet contract specifications. These orders will necessitate special pricing based on quantity and features. All custom designs are subject to a non-refundable design fee of two hundred and fifty dollars (USD) \$250.00. I do not believe this is being applied; please consider excluding it; we can add a paragraph on the custom orders and charges (see below). In specific cases of customization, additional design fees may apply. This will be determined on a case-by-case basis at which time the Buyer will be notified of any said fees.

### PRODUCT AND STORAGE FEES

Upon completion, clients will have a total of four (4) weeks from the date they are billed for their final payment to pay all remaining balances on their order. If the balance remains unpaid after the four (4) week grace period, a 5% storage fee will be applied weekly. This 5% will be calculated based on the total invoice amount, not the remaining balance. Orders that accrue storage fees cannot be released until the fees and remaining balance are paid. If the order extends eight (8) weeks past the date of final billing, the client consents to release the order to KOKET stock, and the order deposit is lost.

### ORDER CANCELLATION

All goods are custom made to order specifications. Orders are not cancellable after five (5) working days since the day of the 1st payment of the order, nor returnable. If the order is cancelled within the five business days allowed, the amount already paid will be credited (KOKET Credit Note) to the same entity that was ordered from us. Changes in orders, returns or cancellations require prior written approval from manufacturer. In every other aspect (delay, client indecision, loss of projects, etc.) the amount paid to KOKET will not be refunded or credited as Credit notes, and the client will lose any right to the goods. In-Stock Lighting Return Policy: KOKET will not accept lighting returns without prior written authorization. Returns or cancellations are subject to cancellation fees or restocking fees up to 50% of the net selling price. In-stock lighting will not be accepted as a return if product has been installed, altered or damaged in any way. Please consider removing this or amend it to all Outlet pieces.

### LEAD TIME

We reserve the right, without prior notice, to change lead time. For pieces with custom specifications or orders of large quantities we reserve the right to adjust the time of delivery accordingly. Lead time for COM or COL orders does not begin until ALL fabric and/or materials are received by the manufacturer, and confirmed to be in full compliance.

### FREIGHT

Shipping costs are not included in the price of an item. This in no way implies that KOKET is responsible for the performance of the carrier. Seller product shipment includes door-to-door, unless stated otherwise in the estimate/proforma invoice. Delivery personnel are limited to delivering to physical shipping address only. They are not permitted to cross the threshold of building, home, or office with shipment. Nor can they handle, uncrate, or remove any packaging or materials. Buyer can request additional services for a higher fee. Additional services include: air freight and white glove services. Any shipments returned to Seller as a result of Buyer's unexcused delay or failure to accept delivery will require Buyer to pay all additional costs incurred by Seller including storage fees.

### TITLE / RISK OF LOSS

Any claim by Buyer against Seller or carrier for shortage or damage occurring prior to delivery must be made in writing within forty-eight (48) hours after receipt of shipment and accompanied by original transportation bill signed by the carrier, noting that the carrier received the goods from Manufacturer in the conditions claimed. All deliveries are subject to the accompanying Freight Receiving Rules.

### WARRANTY AND DISCLAIMER

There are no warranties with our products. When issues arise, KOKET reserves the right to determine whether a replacement or repair is most appropriate. Defective products will be either fixed or replaced within the normal production time period required to reorder and manufacture the replacement product. Furniture: Many wood and metal finishes are applied by hand and may vary in color, tone and character. While Manufacturer will make every effort to match a finish, no guarantee can be made of an exact match. Manufacturer does not guarantee finishes against fading and oxidizing. Variations in color and veining are inherent in stone and wood and considered to be part of the natural beauty. Furniture and lighting is handmade, and therefore is subject to slight variations. Textiles and Soft Goods: Manufacturer does not guarantee fabrics or soft goods, dyed or natural, from fading, normal wear, or slight variations in color. Dining Tables: Dining table designs are handmade and are subject to slight inconsistencies. Table tops and bases are made and shipped in separate crates. Glass table tops are not anchored to the base upon arrival, and thus does not guarantee maximum stability upon placement. Consoles: All console designs are handmade and subject to slight inconsistencies. Certain console designs could cause a small percentage of instability upon movement. Please exercise caution when moving consoles, providing proper support, as they are very fragile.

## Terms & Conditions

### SHIPPING / DELIVERY

As a service to our customers, KOKET will arrange the shipping of orders via one of our preferred carriers. All charges are proforma and will be included on the final balance due notice. If the customer chooses to manage their own freight and delivery, KOKET must be notified of the specific details of the movement. The handling fee for "customer's own" pick-up will be according to the invoice value. Ownership of the product transfers to the customer (owner) upon the freight carrier taking possession of the order for transport. Therefore, responsibility for damage occurring in-transit is the owner's and all claims for freight damage must be made within 48 hours of receipt. If customer selects their own freight carrier, freight claims must be filed directly with the selected carrier. KOKET is not responsible for a customer's own or third party freight damage and claim.

### RECEIPT OF PRODUCT & INSPECTION OF PRODUCT

KOKET highly recommends using a qualified receiving warehouse to receive, inspect, consolidate deliveries and facilitate in-home installation. All crated goods must go through a professional receiver such as a receiving warehouse. A receiving warehouse acts as an agent for the client and is responsible to note any damage and assist the owner with filing a freight claim when any damage is found. A qualified receiving person should be present to accept products when delivered directly to a home. A signature on the POD (Proof of Delivery) upon receipt of the products confirms that the products are received in good condition unless exception is made on the POD. If the merchandise is refused upon delivery for quality or damage issues, the receiver should contact KOKET immediately. If you are unable to inspect the merchandise at the time of receiving the shipment, note on the POD that any concealed damage of boxed or crated products will be the responsibility of the carrier or the manufacturer as determined upon inspection of the products.

- Have the driver sign your copy of the delivery receipt.
- Take pictures of noted damages of item and packaging.
- Do not discard packaging, as insurance adjuster will need to review item and packaging when a claim has been filed.
- Contact KOKET as soon as you inspect item(s) received to advise them of any damages as a claim will need to be filed by them within 48 hours of delivery.

Note: Courts have generally ruled that a consignee may not open the containers and examine the merchandise before giving a receipt to the carrier unless the containers indicate the probability of damage.

If you discover damage after delivery and the delivery receipt has a vague notation or no notation, it may result in a denied claim. Damages that are caused by the Freight Carrier and occurred during transit from KOKET to the Consignee, are not the responsibility of KOKET. It is the Consignee's responsibility to inspect items received upon delivery to ensure proper measures can be taken to file a claim with the Freight Carrier.

**\*\*Photos of damages of the product, crate and packaging are mandatory for filing a claim, along with a written detailed description. KOKET will not honour any claims without this documentation.\*\***

All product claims should be reported directly to KOKET, within 48 hours of receiving the product. You will then be given directives on how/where to send the proper documentation. Do not attempt a return without first having obtained a KOKET written authorization. KOKET will not accept returns without prior written authorization.

### LIMITATION OF REMEDIES

Neither manufacturer nor seller shall be liable for incidental or consequential losses, damages or expenses, directly or indirectly arising from the sale, handling or use of the goods, or from any other cause with respect to the goods or this agreement, whether such claim is based upon breach of contract, strict liability in tort, negligence or any other legal theory. Seller's liability hereunder in any case is expressly limited, at manufacturer's election, to repair or replace (in the form originally ordered) of goods not complying with this agreement, or to the repayment of, or crediting buyer with, an amount equal to the purchase price of such goods.

### LIMITATION OF REMEDIES

Neither manufacturer nor seller shall be liable for incidental or consequential losses, damages or expenses, directly or indirectly arising from the sale, handling or use of the goods, or from any other cause with respect to the goods or this agreement, whether such claim is based upon breach of contract, strict liability in tort, negligence or any other legal theory. Seller's liability hereunder in any case is expressly limited, at manufacturer's election, to repair or replace (in the form originally ordered) of goods not complying with this agreement, or to the repayment of, or crediting buyer with, an amount equal to the purchase price of such goods.

### REMEDIES UPON DEFAULT

Seller requires payment for any shipment hereunder in advance. If Buyer fails to make payment in accordance with the terms of this agreement or otherwise fails to comply with any provision hereof, Seller may, at its option, cancel any unshipped portion of this order, retain the goods and declare a forfeiture of the deposit as liquidated damages. In the alternative, Seller shall (in addition to other remedies available under any applicable Uniform Commercial Code or otherwise by law) have the right to appropriate and apply the goods to payment due hereunder. Seller may proceed to sell or otherwise dispose of the goods at public or private sale for cash or credit; provided, however, that Buyer shall be credited with the proceeds of such sale only when the proceeds are received by Seller. If any notification or intended disposition is required by law, such notification shall be deemed reasonably and properly given if mailed at least ten days before such disposition, postage prepaid, to Buyer at the Buyer's address set forth on the face side hereof. Any proceeds of the goods may be applied by Seller to the payment of expenses and costs to exercise Seller's rights hereunder, and any balance of such proceeds shall be applied against Buyer's account in such order as Seller shall determine in its sole discretion. Buyer will remain liable for the balance of all unpaid accounts.



---

## Terms & Conditions

### EXCLUSIONS

All of Manufacturer's drawings, descriptive matter, weights, dimensions, descriptions and illustrations contained in the Seller's catalogues, prices list's or advertisements are close approximations only and intended to give a general description of the goods and shall not form part of this agreement. Furniture and lighting is handmade, and therefore is subject to slight variations.

### WAIVER

Waiver by Manufacturer or Seller of any breach of these terms and conditions shall not be construed as a waiver of any other breach, and failure to exercise any right arising from any default hereunder shall not be deemed a waiver of such right at any subsequent time.

### SEVERABILITY

In the event that any one or more of these terms or conditions is held invalid, illegal or unenforceable, such provision(s) shall be severed and the remaining terms and conditions shall remain binding and effective.

---

## Terms & Conditions

---

### TERMS ARE SUBJECT TO CHANGE AT ANY TIME WITHOUT PRIOR NOTICE

---

#### PAYMENT DETAILS

Wire Transfer | Please contact us for account information.  
USA: WIRE TRANSFER FEE: 18\$  
REST OF THE WORLD: WIRE TRANSFER FEE: 12€  
Check Payment  
Please write checks to KOKET, LLC  
Send to: KOKET, LLC  
9255 Center Street, Suite 102  
Manassas, VA 20110, USA

Wire transfers bank charges are to be borne by the payer; may change according to the client's bank /account.

Payments with credit card have an additional charge of 3% of the invoice value for processing purposes.

#### PAYMENTS TO KOKET PT

IBAN: PT50 0018 000342841106020 08  
SWIFT: TOTAPTPL  
Bank: Banco Santander Totta S.A.  
Country: Portugal  
Account holder: Koket Love Happens, Unip. Lda  
VAT Number: 514061464  
Address: Rua Nova do Campinho, nº 1  
4435-751 Baguim do Monte  
Rio Tinto  
+351 220 925 825  
+351 221 125 442

# EMPOWERING SCENT

by koket



*Empowering is a warm, sweet, sensual scent. With a rich composition of sophisticated essential oils, it is simultaneously mysterious, classic, and sexy. A powerful and unique aroma!*

WWW.BYKOKET.COM



“

*A curated collection composed of stunning casegoods, luscious upholstery nished in KOKET's exquisite textiles collection, and light textures that will command attention in any space.*

*Become a part of KOKET world by flipping through the new KK by KOKET catalogue and Love Happens Mag.*

[www.bykoket.com](http://www.bykoket.com)  
[www.kkbykoket.com](http://www.kkbykoket.com)  
[www.lovehappensmag.com](http://www.lovehappensmag.com)